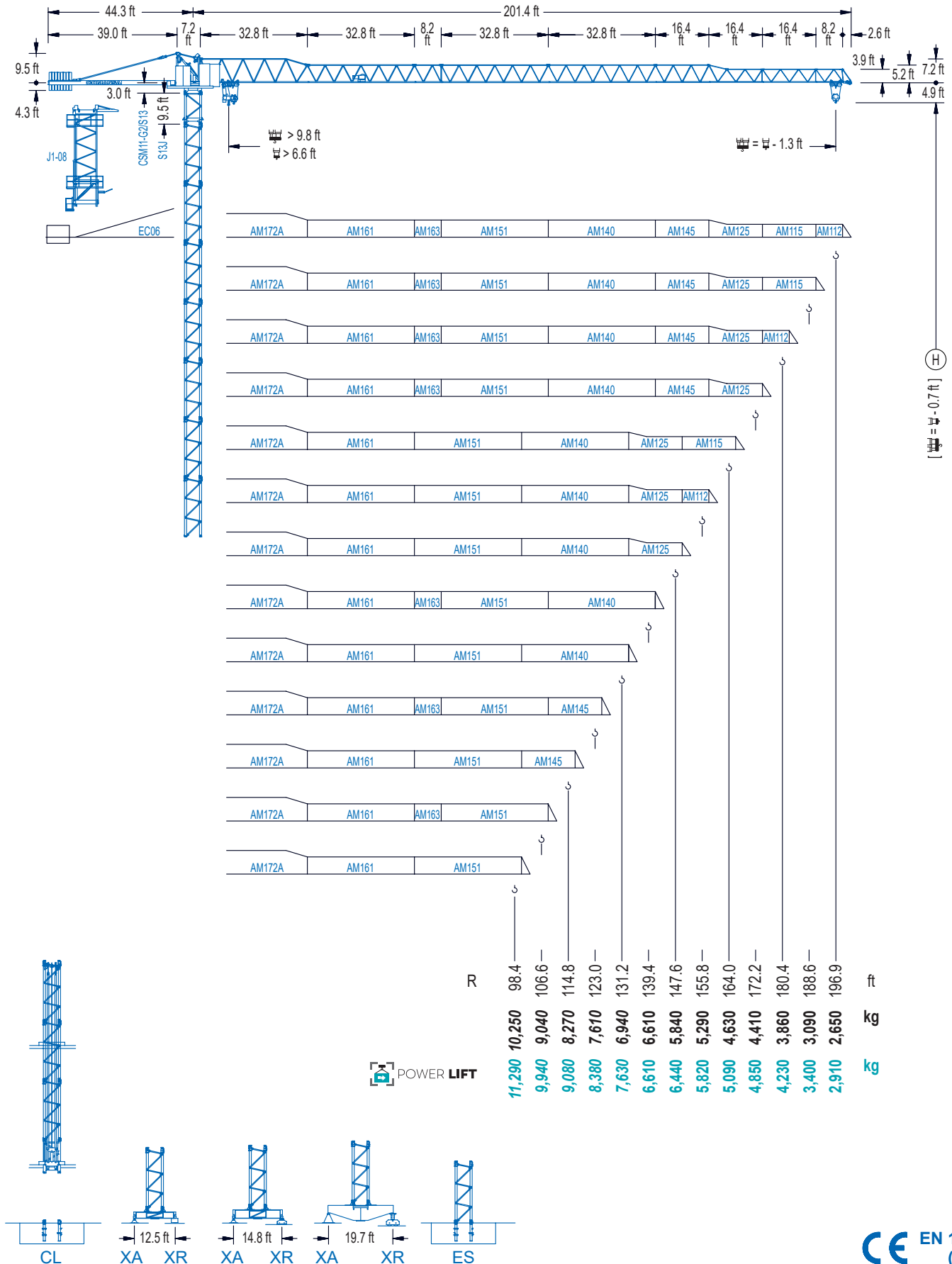


1100 Series

11 LC 132

DT 13,230 lb



1100 Series

DIAGRAMA DE CARGAS

Load chart / Diagramme de charges / Lastdiagramm / Diagramma di carico / Диаграмма распределения нагрузки

R (ft)																				
196.9	48.2 13,230	59.1 10,340	65.6 9,080	75.5 7,610	84.0 6,610	93.2 6,610	98.4 6,220	106.6 5,640	114.8 5,180	123.0 4,760	131.2 4,410	139.4 4,100	147.6 3,810	155.8 3,570	164.0 3,350	172.2 3,150	180.4 2,950	188.6 2,800	196.9 2,650	ft lb
188.6	51.5 13,230	59.1 11,270	65.6 9,900	75.5 8,330	82.0 7,500	90.2 6,610	100.4 6,610	106.6 6,170	114.8 5,670	123.0 5,220	131.2 4,830	139.4 4,500	147.6 4,190	155.8 3,920	164.0 3,680	172.2 3,460	180.4 3,260	188.6 3,090	ft lb	
180.4	58.4 13,230	65.6 11,550	75.5 9,740	82.0 8,800	91.9 7,630	98.4 6,990	102.7 6,610	114.5 6,610	123.0 6,080	131.2 5,640	139.4 5,270	147.6 4,920	155.8 4,610	164.0 4,340	172.2 4,080	180.4 3,860				ft lb
172.2	62.0 13,230	65.6 12,390	75.5 10,470	82.0 9,460	91.9 8,220	98.4 7,540	106.6 6,810	108.9 6,610	122.0 6,610	131.2 6,080	139.4 5,670	147.6 5,290	155.8 4,960	164.0 4,670	172.2 4,410					ft lb
164.0	61.7 13,230	65.6 12,260	75.5 10,360	82.0 9,370	91.9 8,130	98.4 7,450	105.0 6,860	107.9 6,610	121.1 6,610	131.2 6,020	139.4 5,600	147.6 5,250	155.8 4,920	164.0 4,630					ft lb	
155.8			65.3 13,230	75.5 11,110	82.0 10,050	91.9 8,750	98.4 8,020	106.6 7,250	111.5 6,860	114.5 6,610	128.6 6,610	139.4 6,020	147.6 5,640	155.8 5,290					ft lb	
147.6			67.3 13,230	75.5 11,510	82.0 10,410	91.9 9,060	98.4 8,330	106.6 7,520	114.8 6,860	118.1 6,610	132.5 6,610	139.4 6,240	147.6 5,840					ft lb		
139.4					72.5 13,230	82.0 11,400	91.9 9,940	98.4 9,150	106.6 8,290	114.8 7,540	127.6 6,610	139.4 6,610			147.6 6,100				ft lb	
131.2					76.4 13,230	82.0 12,190	91.9 10,650	98.4 9,810	106.6 8,880	114.8 8,110	123.0 7,430	129.8 6,940					ft lb			
123.0					77.1 13,230	82.0 12,280	91.9 10,740	98.4 9,880	106.6 8,950	114.8 8,180	121.6 7,610					ft lb				
114.8					76.8 13,230	82.0 12,240	91.9 10,690	98.4 9,830	106.6 8,930	113.4 8,270					ft lb					
106.6					76.4 13,230	82.0 12,190	91.9 10,650	98.4 9,810	105.2 9,040					ft lb						
98.4					78.4 13,230	82.0 12,520	91.9 10,930	97.0 10,250					ft lb							

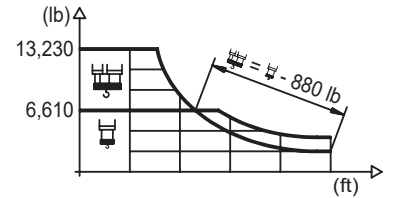
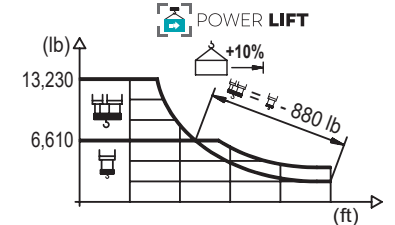


DIAGRAMA DE CARGAS POWERLIFT

Load chart PowerLift / Diagramme de charges PowerLift / Lastdiagramm PowerLift / Diagramma di carico PowerLift / Диаграмма распределения нагрузки PowerLift

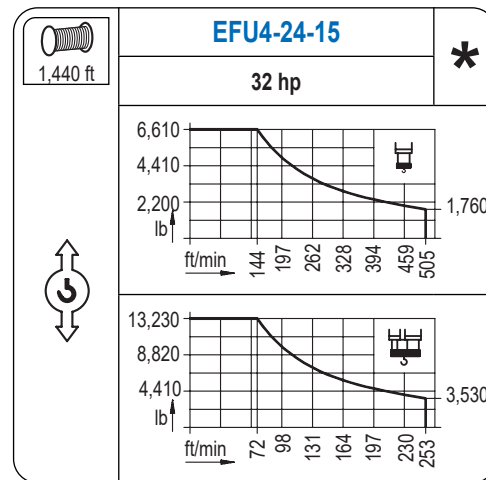
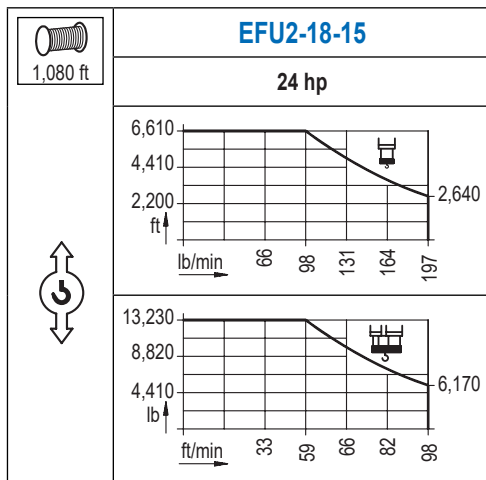
R (ft)																					
196.9	51.5 13,230	59.1 11,240	65.6 9,880	75.5 8,310	82.0 7,470	90.2 6,610	100.1 6,610	106.6 6,150	114.8 5,640	123.0 5,200	131.2 4,810	139.4 4,480	147.6 4,190	155.8 3,900	164.0 3,660	172.2 3,460	180.4 3,260	188.6 3,090	196.9 2,910	ft lb	
188.6	55.4 13,230	59.1 12,260	65.6 10,800	75.5 9,100	82.0 8,200	91.9 7,100	97.1 6,610	108.3 6,610	114.8 6,170	123.0 5,690	131.2 5,270	139.4 4,920	147.6 4,590	155.8 4,300	164.0 4,030	172.2 3,790	180.4 3,590	188.6 3,400			ft lb
180.4			63.0 13,230	75.5 10,670	82.0 9,660	91.9 8,380	98.4 7,690	106.6 6,940	110.9 6,610	123.7 6,610	131.2 6,170	139.4 5,750	147.6 5,380	155.8 5,050	164.0 4,760	172.2 4,500	180.4 4,230			ft lb	
172.2			66.9 13,230	75.5 11,510	82.0 10,410	91.9 9,060	98.4 8,310	106.6 7,520	111.5 7,100	117.8 6,610	131.9 6,610	139.4 6,220	147.6 5,820	155.8 5,470	164.0 5,140	172.2 4,850				ft lb	
164.0			66.6 13,230	75.5 11,380	82.0 10,300	91.9 8,950	98.4 8,220	106.6 7,430	111.5 7,010	116.8 6,610	130.9 6,610	139.4 6,150	147.6 5,750	155.8 5,400	164.0 5,090					ft lb	
155.8			70.5 13,230	82.0 11,070	91.9 9,660	98.4 8,860	106.6 8,020	114.8 7,320	121.4 6,810	124.0 6,610	139.4 6,610	147.6 6,190	155.8 5,820					ft lb			
147.6			72.5 13,230	82.0 11,460	91.9 10,010	98.4 9,190	106.6 8,330	114.8 7,580	123.0 6,970	128.0 6,610	144.0 6,610	147.6 6,440					ft lb				
139.4			77.8 13,230	82.0 12,410	91.9 10,850	98.4 9,990	106.6 9,060	114.8 8,270	123.0 7,580	137.1 6,610	139.4 6,610			147.6 6,100				ft lb			
131.2			82.3 13,230	91.9 11,640	98.4 10,710	106.6 9,740	114.8 8,910	123.0 8,180	129.8 7,630					ft lb							
123.0			83.0 13,230	91.9 11,750	98.4 10,820	106.6 9,830	114.8 8,970	121.6 8,380					ft lb								
114.8			83.0 13,230	91.9 11,730	98.4 10,800	106.6 9,810	113.4 9,080					ft lb									
106.6			82.7 13,230	91.9 11,680	98.4 10,780	105.2 9,940					ft lb										
98.4			84.6 13,230	91.9 12,040	97.0 11,290					ft lb											



Datos válidos hasta 328 ft de ABG. Para alturas mayores consultar / Valid data up to 328 ft HUH. Additional heights on request / Données valables jusqu'à 328 ft HSC. Pour des autres hauteurs, merci de nous consulter / Gültige Daten bis zu 328 ft HH. Bei höheren Hakenhöhen nachfragen / Dati validi fino a 328 ft ASG. Per altezze superiori consultare Comansa / Допустимые данные до 328 фут ВГК. Для более высоких высот консультируетесь


MECANISMOS

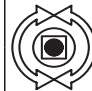
Mechanisms / Mécanismes / Antriebe / Meccanismi / Механизмы

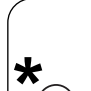


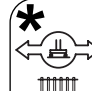
MECANISMOS

Mechanisms / Mécanismes / Antriebe / Meccanismi / Механизмы

	CFU-4.0
	5.4 hp
0 ⇔ 262 ft/min	

	GFU-5.5
	2x 7.4 hp
0 ⇔ 0,7 rpm	

	TS2-5.5
	2x 40 ft·lb
	78 ft/min
	1XR51 3XR51

	TRA-7.5
	2x 55 ft·lb
	78 ft/min
	5XR71

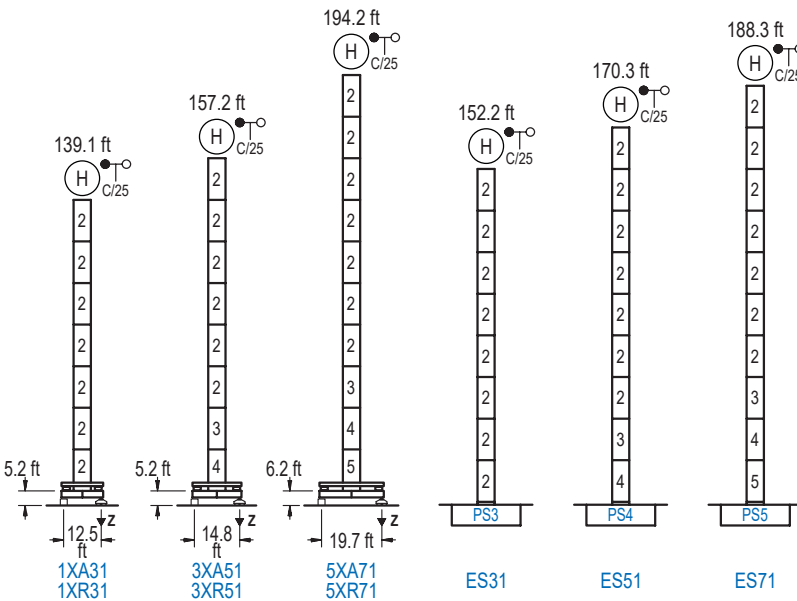
Elevación / Hoist / Levege / Hub / Sollevamento / Тип механизма (подъем)	Carro / Trolley / Chariot / Laufkatze / Carrelo / Грузовая тележка	Giro / Slewing / Rotation / Drehbewegung / Rotazione / Поворот	Traslación / Travel / Translation / Verfahrbewegung / Traslazione / Ход	Tensión de alimentación / Operating voltage / Tension de service / Betriebsspannung / Tensione di alimentazione / Напряжение источника питания	Potencia requerida / Required power / Puissance requise / Benötigte Leistung / Potenza richiesta / требуемая мощность
EFU2-18-15	CFU-4.0	(2x) GFU-5.5	(2x) TS2-5.5	480 V	29 kVA
EFU4-24-15			(2x) TRA-7.5	3ph 60 Hz	36 kVA

Optional / Option / En option / Kaufoption / Opzionale / Опционально
*

ALTURAS BAJO GANCHO

Heights under hook / Hauteurs sous crochet / Hakenhöhen / Altezza sotto gancio / Высота под крюком

∅ 5.2 ft

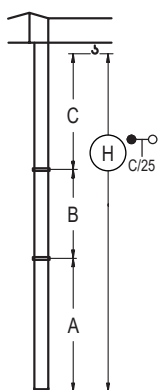


n°	Ref.	∅	h
2	S13	5.2	18.0
3	TS14	5.2	18.0
4	S14	5.2	18.0
5	TS15	5.2	18.0
6	S15	5.2	18.0
		1x S13 = 1x S13M	
		1x S15 = 1x S15M	

Z máx.	En servicio / In operation / En service / In Betrieb / In servizio / При работе	1XR31.. 150 kip 3XR51.. 148 kip 5XR71.. 150 kip
	Fuera de servicio / Out of service / Hors service / Ausser Betrieb / Fuori servizio / В стационарном состоянии	1XR31.. 154 kip 3XR51.. 172 kip 5XR71.. 209 kip

GRÚA ARRIOSTRADA

Braced crane / Grue à entretoisement / Abgespannter Kran / Gru ancorata / Нарастиваемый кран

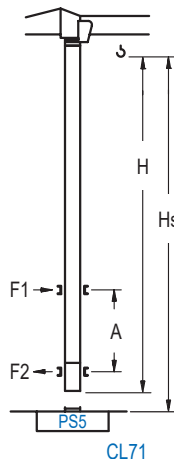


	1XA31	3XA51	5XA71
A max	95.5	113.5	150.6
A min	59.4	59.4	96.5
B max	-	72.2	72.2
B min	-	54.1	54.1
C max	115.8	115.8	115.8
H max	211.3	283.5	229.3

	ES31	ES51	ES71
A max	108.6	126.6	144.7
A min	54.5	72.5	90.6
B max	-	72.2	72.2
B min	-	54.1	54.1
C max	115.8	115.8	115.8
H max	224.4	296.6	242.5

GRÚA TREPADORA

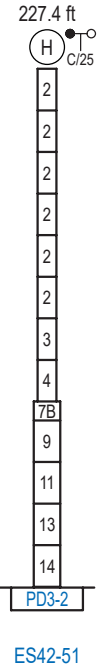
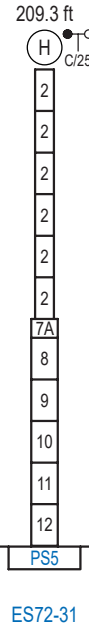
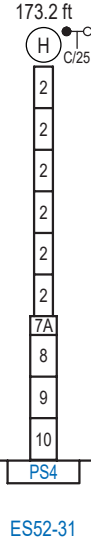
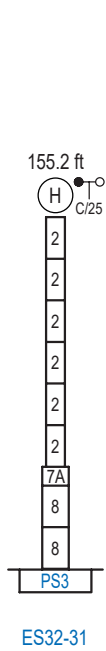
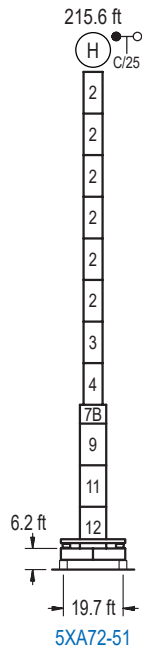
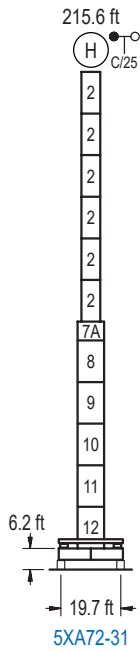
Internal climbing crane / Grue avec cage de télescopage intérieure / Kran mit klettern im Gebäude / Gru in rampante in cavedio / Кран с самоподъемом



Hook height (ft)	Hs < 1,310 ft	
	A max (ft)	A min (ft)
144.0 ft S13J + 5x S13 + TS14 + TS15 + CLS15-08	55.1	36.1
126.0 ft S13J + 4x S13 + TS14 + TS15 + CLS15-08	46.3	29.5
107.9 ft S13J + 3x S13 + TS14 + TS15 + CLS15-08	37.4	23.0

Ref.	∅	h
S13	5.2	18.0
TS14	5.2	18.0
TS15	5.2	18.0
CLS15-08	5.2	10.2
1x S13 = 1x S13M		

Otras zonas de viento, alturas superiores, arriostramientos o trepado interno consultar / Other wind zones, additional hook heights, tie frames or internal climbing on request / Autres zones de vent, des hauteurs supplémentaires, entretoisements ou grues avec cage de télescopage intérieure, sur demande / Andere Windzonen, weitere Hakenhöhen, Abspannungen zum Gebäude oder Klettern im Gebäude auf Anfrage / Per zone con velocità del vento particolari, altezze superiori, ancoraggi o rampante in cavedio, consultare il fabbricante / При других ветренных зонах, при большой высоте, привязках к зданию или наращивании крана внутри здания проконсультируйтесь с нами



n°	Ref.	∅	h	n°	Ref.	∅	h	n°	Ref.	∅	h	n°	Ref.	∅	h
2	S13	5.2	18.0	7A	TMS23/PMS3	6.6	3.3	8	S23	6.6	18.0	13	TD23A	6.6	18.0
3	TS14	5.2	18.0	7B	TMS23/PMS4	6.6	3.3	9	TS24	6.6	18.0	14	D23	6.6	18.0
4	S14	5.2	18.0					10	S24	6.6	18.0				
5	TS15	5.2	18.0					11	TS25	6.6	18.0				
6	S15	5.2	18.0					12	S25	6.6	18.0				
1x S13 = 1x S13M								1x S23 = 1x S23M							
1x S15 = 1x S15M								1x S25 = 1x S25M							

Otras zonas de viento o alturas superiores consultar / Other wind zones or additional hook heights on request / Autres zones de vent ou des hauteurs supplémentaires sur demande / Andere Windzonen oder weitere Hakenhöhen auf Anfrage / Per zone con velocità del vento particolari o altezze superiori consultare il fabbricante / При других ветренных зонах о при большой высоте проконсультируйтесь с нами