

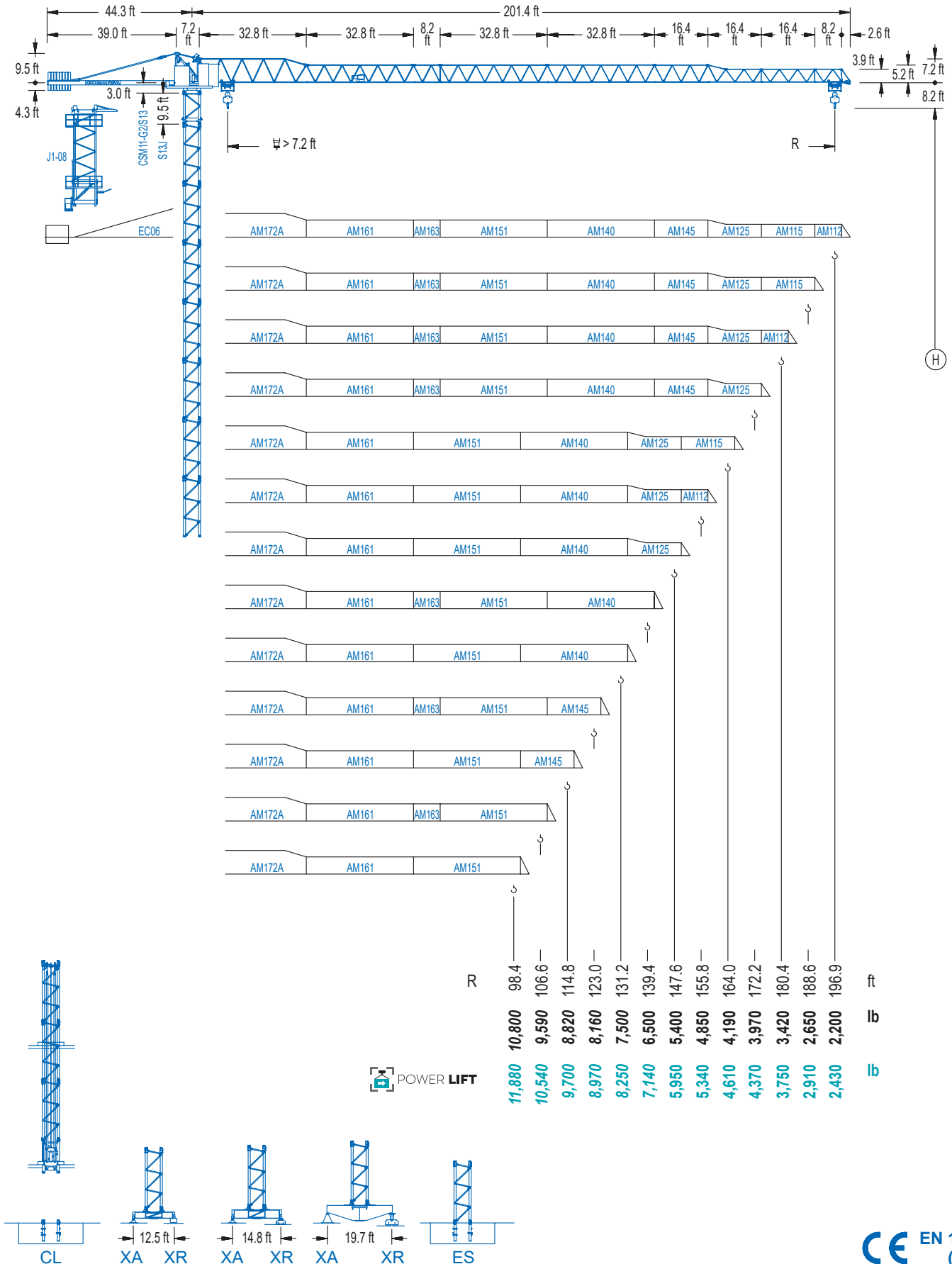


**COMANSA**

**1100 Series**

**11 LC 132**

**RC 13,230 lb**



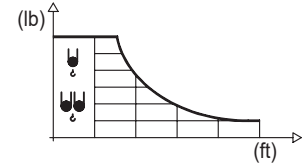
**1100 Series**

**CE EN 14439 (C/25)**

## DIAGRAMA DE CARGAS

Load chart / Diagramme de charges / Lastdiagramm / Diagramma di carico / Диаграмма распределения нагрузки

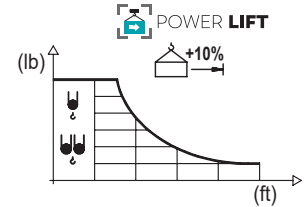
R (ft)	U					U														
196.9	47.9	59.1	65.6	75.5	86.6	91.9	98.4	106.6	114.8	123.0	131.2	139.4	147.6	155.8	164.0	172.2	180.4	188.6	196.9	ft
	13,230	10,410	9,190	7,800	6,610	6,150	5,670	5,110	4,650	4,250	3,920	3,620	3,350	3,110	2,890	2,690	2,510	2,360	2,200	lb
188.6	51.8	59.1	65.6	75.5	82.0	93.5	98.4	106.6	114.8	123.0	131.2	139.4	147.6	155.8	164.0	172.2	180.4	188.6	ft	
	13,230	11,380	10,080	8,550	7,760	6,610	6,220	5,640	5,140	4,720	4,340	4,010	3,730	3,460	3,220	3,020	2,820	2,650	lb	
180.4	59.1	65.6	75.5	82.0	91.9	98.4	107.3	114.8	123.0	131.2	139.4	147.6	155.8	164.0	172.2	180.4	ft			
	13,230	11,750	10,010	9,080	7,960	7,320	6,610	6,080	5,600	5,160	4,780	4,450	4,140	3,880	3,640	3,420	lb			
172.2	63.0	75.5	82.0	91.9	98.4	106.6	114.8	123.0	131.2	139.4	147.6	155.8	164.0	172.2	ft					
	13,230	10,780	9,790	8,580	7,910	7,210	6,610	6,060	5,600	5,200	4,830	4,520	4,230	3,970	lb					
164.0	62.7	75.5	82.0	91.9	98.4	106.6	113.5	123.0	131.2	139.4	147.6	155.8	164.0	ft						
	13,230	10,690	9,700	8,510	7,850	7,140	6,610	6,020	5,560	5,160	4,780	4,480	4,190	lb						
155.8	66.6	75.5	82.0	91.9	98.4	106.6	114.8	121.1	131.2	139.4	147.6	155.8	ft							
	13,230	11,460	10,430	9,150	8,440	7,690	7,050	6,610	6,000	5,580	5,180	4,850	lb							
147.6	68.6	75.5	82.0	91.9	98.4	106.6	114.8	125.0	131.2	139.4	147.6	ft								
	13,230	11,900	10,820	9,500	8,770	7,980	7,320	6,610	6,240	5,800	5,400	lb								
139.4	75.5	82.0	91.9	98.4	106.6	114.8	123.0	137.5	139.4	ft										
	13,230	12,040	10,580	9,790	8,930	8,180	7,540	6,610	6,500	lb										
131.2	80.1	91.9	98.4	106.6	114.8	123.0	131.2	ft												
	13,230	11,310	10,450	9,550	8,750	8,090	7,500	lb												
123.0	80.7	91.9	98.4	106.6	114.8	123.0	ft													
	13,230	11,420	10,540	9,630	8,840	8,160	lb													
114.8	80.4	91.9	98.4	106.6	114.8	ft														
	13,230	11,380	10,520	9,610	8,820	lb														
106.6	80.4	91.9	98.4	106.6	ft															
	13,230	11,380	10,520	9,590	lb															
98.4	82.3	91.9	98.4	ft																
	13,230	11,680	10,800	lb																



## DIAGRAMA DE CARGAS POWERLIFT

Load chart PowerLift / Diagramme de charges PowerLift / Lastdiagramm PowerLift / Diagramma di carico PowerLift / Диаграмма распределения нагрузки PowerLift

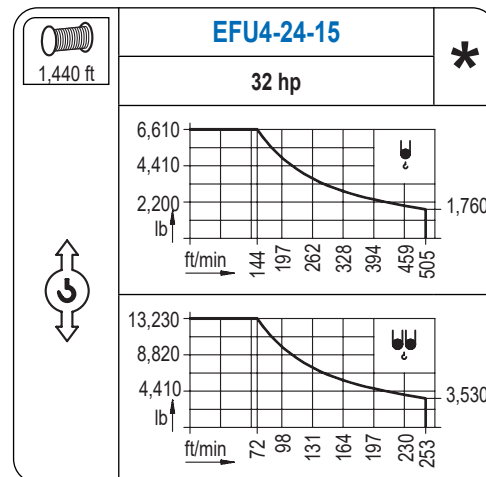
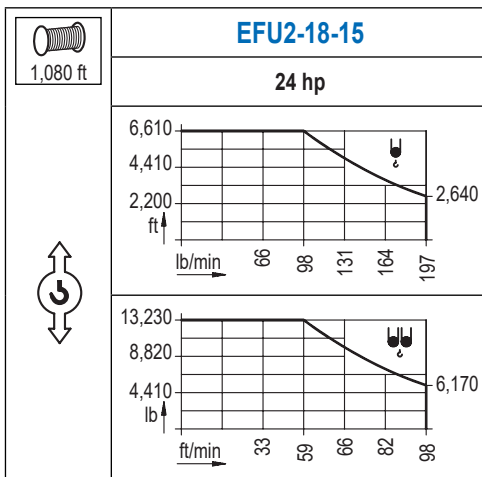
R (ft)	U					U														
196.9	50.9	59.1	65.6	75.5	82.0	92.2	98.4	106.6	114.8	123.0	131.2	139.4	147.6	155.8	164.0	172.2	180.4	188.6	196.9	ft
	13,230	11,160	9,880	8,400	7,610	6,610	6,110	5,530	5,050	4,630	4,250	3,920	3,640	3,400	3,150	2,950	2,760	2,580	2,430	lb
188.6	55.1	59.1	65.6	75.5	82.0	91.9	100.1	106.6	114.8	123.0	131.2	139.4	147.6	155.8	164.0	172.2	180.4	188.6	ft	
	13,230	12,240	10,850	9,220	8,380	7,320	6,610	6,110	5,580	5,110	4,720	4,370	4,060	3,790	3,530	3,310	3,090	2,910	lb	
180.4	63.3	75.5	82.0	91.9	98.4	106.6	115.2	123.0	131.2	139.4	147.6	155.8	164.0	172.2	180.4	ft				
	13,230	10,850	9,850	8,640	7,960	7,250	6,610	6,110	5,640	5,220	4,870	4,540	4,250	3,990	3,750	lb				
172.2	67.6	75.5	82.0	91.9	98.4	106.6	114.8	123.0	131.2	139.4	147.6	155.8	164.0	172.2	ft					
	13,230	11,710	10,630	9,350	8,620	7,850	7,190	6,610	6,130	5,690	5,290	4,960	4,650	4,370	lb					
164.0	67.3	75.5	82.0	91.9	98.4	106.6	114.8	122.4	131.2	139.4	147.6	155.8	164.0	ft						
	13,230	11,620	10,560	9,260	8,550	7,780	7,140	6,610	6,080	5,640	5,270	4,920	4,610	lb						
155.8	71.9	82.0	91.9	98.4	106.6	114.8	123.0	130.6	139.4	147.6	155.8	ft								
	13,230	11,380	9,990	9,220	8,400	7,720	7,100	6,610	6,110	5,710	5,340	lb								
147.6	74.1	82.0	91.9	98.4	106.6	114.8	123.0	135.2	139.4	147.6	ft									
	13,230	11,790	10,380	9,590	8,730	8,020	7,390	6,610	6,370	5,950	lb									
139.4	81.7	91.9	98.4	106.6	114.8	123.0	131.2	139.4	ft											
	13,230	11,570	10,710	9,770	8,970	8,290	7,670	7,140	lb											
131.2	86.6	91.9	98.4	106.6	114.8	123.0	131.2	ft												
	13,230	12,390	11,460	10,470	9,610	8,880	8,250	lb												
123.0	87.3	91.9	98.4	106.6	114.8	123.0	ft													
	13,230	12,500	11,570	10,560	9,720	8,970	lb													
114.8	87.3	91.9	98.4	106.6	114.8	ft														
	13,230	12,500	11,550	10,560	9,700	lb														
106.6	87.3	91.9	98.4	106.6	ft															
	13,230	12,480	11,550	10,540	lb															
98.4	89.6	98.4	ft																	
	13,230	11,880	lb																	



Datos válidos hasta 328 ft de ABG. Para alturas mayores consultar / Valid data up to 328 ft HUH. Additional heights on request / Données valables jusqu'à 328 ft HSC. Pour des autres hauteurs, merci de nous consulter / Gültige Daten bis zu 328 ft HH. Bei höheren Hakenhöhen nachfragen / Dati validi fino a 328 ft ASG. Per altezze superiori consultare Comansa / Допустимые данные до 328 фут ВПК. Для более высоких высот консультируйтесь


## MECANISMOS

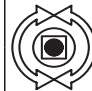
Mechanisms / Mécanismes / Antriebe / Meccanismi / Механизмы

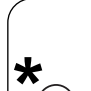


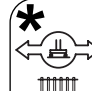
## MECANISMOS

Mechanisms / Mécanismes / Antriebe / Meccanismi / Механизмы

	<b>CFU-4.0</b>
	<b>5.4 hp</b>
0 ⇔ 262 ft/min	

	<b>GFU-5.5</b>
	<b>2x 7.4 hp</b>
0 ⇔ 0,7 rpm	

	<b>TS2-5.5</b>
	<b>2x 40 ft·lb</b>
	78 ft/min
	<b>1XR51 3XR51</b>

	<b>TRA-7.5</b>
	<b>2x 55 ft·lb</b>
	78 ft/min
	<b>5XR71</b>

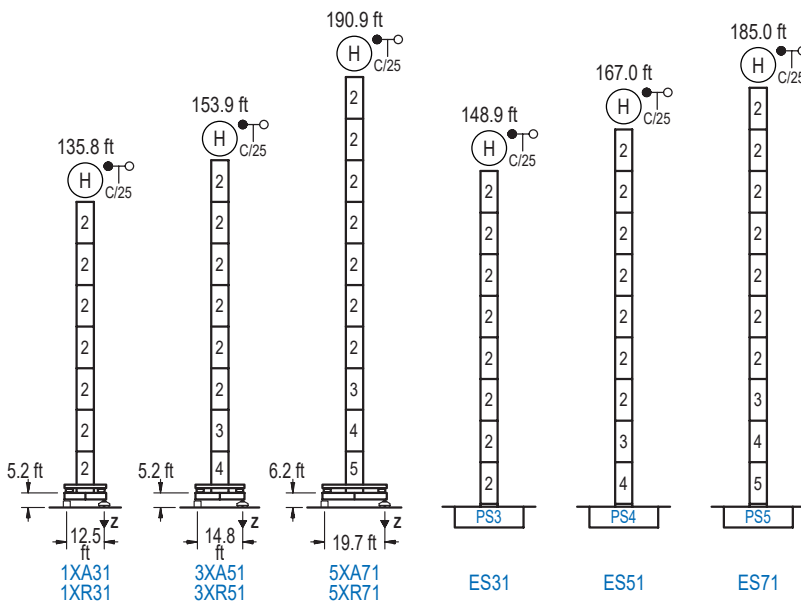
Elevación / Hoist / Levege / Hub / Sollevamento / Тип механизма (подъем)	Carro / Trolley / Chariot / Laufkatze / Carrelo / Грузовая тележка	Giro / Slewing / Rotation / Drehbewegung / Rotazione / Поворот	Traslación / Travel / Translation / Verfahrbewegung / Traslazione / Ход	Tensión de alimentación / Operating voltage / Tension de service / Betriebsspannung / Tensione di alimentazione / Напряжение источника питания	Potencia requerida / Required power / Puissance requise / Benötigte Leistung / Potenza richiesta / требуемая мощность
EFU2-18-15	CFU-4.0	(2x) GFU-5.5	(2x) TS2-5.5	480 V 3ph 60 Hz	29 kVA
EFU2-24-15			(2x) TRA-7.5		36 kVA

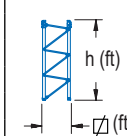
Optional / Optional / En option / Kaufoption / Opzionale / Опционально
<b>*</b>

## ALTURAS BAJO GANCHO

Heights under hook / Hauteurs sous crochet / Hakenhöhen / Altezza sotto gancio / Высота под крюком

∅ 5.2 ft

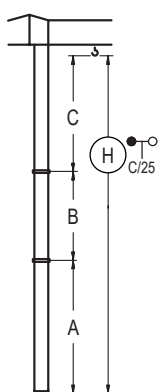


	n°	Ref.	∅	h
	2	S13	5.2	18.0
	3	TS14	5.2	18.0
	4	S14	5.2	18.0
	5	TS15	5.2	18.0
	6	S15	5.2	18.0
	1x S13 = 1x S13M			
	1x S15 = 1x S15M			

<b>Z máx.</b>	En servicio / In operation / En service / In Betrieb / In servizio / При работе	1XR31.. 150 kip 3XR51.. 148 kip 5XR71.. 150 kip
	Fuera de servicio / Out of service / Hors service / Ausser Betrieb / Fuori servizio / В стационарном состоянии	1XR31.. 154 kip 3XR51.. 172 kip 5XR71.. 209 kip

## GRÚA ARRIOSTRADA

Braced crane / Grue à entretoisement / Abgespannter Kran / Gru ancorata / Нарастиваемый кран



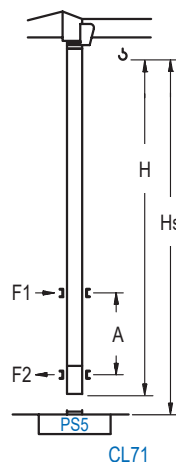
	1XA31	3XA51	5XA71
A max	95.5	113.5	150.6
A min	59.4	59.4	63.6
B max	-	72.2	72.2
B min	-	54.1	54.1
C max	112.5	112.5	112.5
H max	208.0	280.2	335.3

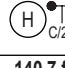
  

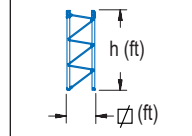
	ES31	ES51	ES71
A max	108.6	126.6	144.7
A min	54.5	72.5	90.6
B max	-	72.2	72.2
B min	-	54.1	54.1
C max	112.5	112.5	112.5
H max	221.1	293.3	329.4

## GRÚA TREPADORA

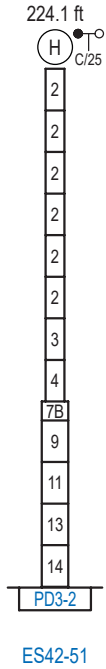
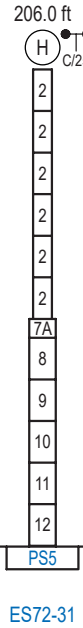
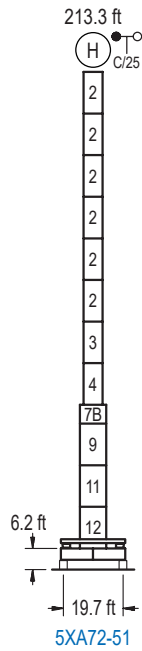
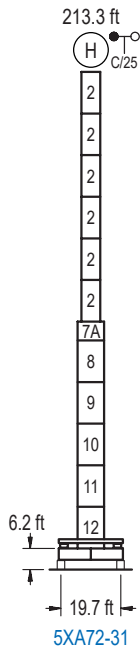
Internal climbing crane / Grue avec cage de télescopage intérieure / Kran mit klettern im Gebäude / Gru in rampante in cavedio / Кран с самоподъемом



	Hs < 1,310 ft	A max (ft)	A min (ft)
<b>140.7 ft</b> S13J + 5x S13 + TS14 + TS15 + CLS15-08	55.1	36.1	
<b>122.7 ft</b> S13J + 4x S13 + TS14 + TS15 + CLS15-08	46.3	29.5	
<b>104.7 ft</b> S13J + 3x S13 + TS14 + TS15 + CLS15-08	37.4	23.0	

	Ref.	∅	h
	S13	5.2	18.0
	TS14	5.2	18.0
	TS15	5.2	18.0
	CLS15-08	5.2	10.2
	1x S13 = 1x S13M		

Otras zonas de viento, alturas superiores, arriostramientos o trepado interno consultar / Other wind zones, additional hook heights, tie frames or internal climbing on request / Autres zones de vent, des hauteurs supplémentaires, entretoisements ou grues avec cage de télescopage intérieure, sur demande / Andere Windzonen, weitere Hakenhöhen, Abspannungen zum Gebäude oder Klettern im Gebäude auf Anfrage / Per zone con velocità del vento particolari, altezze superiori, ancoraggi o rampante in cavedio, consultare il fabbricante / При других ветренных зонах, при большой высоте, привязках к зданию или наращивании крана внутри здания проконсультируйтесь с нами



n°	Ref.	∅	h	n°	Ref.	∅	h	n°	Ref.	∅	h	n°	Ref.	∅	h
2	S13	5.2	18.0	7A	TMS23/PMS3	6.6	3.3	8	S23	6.6	18.0	13	TD23A	6.6	18.0
3	TS14	5.2	18.0	7B	TMS23/PMS4	6.6	3.3	9	TS24	6.6	18.0	14	D23	6.6	18.0
4	S14	5.2	18.0					10	S24	6.6	18.0				
5	TS15	5.2	18.0					11	TS25	6.6	18.0				
6	S15	5.2	18.0					12	S25	6.6	18.0				
1x S13 = 1x S13M								1x S23 = 1x S23M							
1x S15 = 1x S15M								1x S25 = 1x S25M							

Otras zonas de viento o alturas superiores consultar / Other wind zones or additional hook heights on request / Autres zones de vent ou des hauteurs supplémentaires sur demande / Andere Windzonen oder weitere Hakenhöhen auf Anfrage / Per zone con velocità del vento particolari o altezze superiori consultare il fabbricante / При других ветренных зонах о при большой высоте проконсультируйтесь с нами