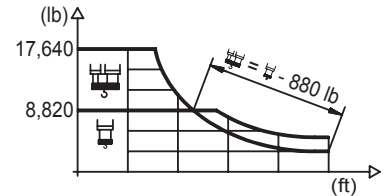




## DIAGRAMA DE CARGAS

Load chart / Diagramme de charges / Lastdiagramm / Diagramma di carico / Диаграмма распределения нагрузки

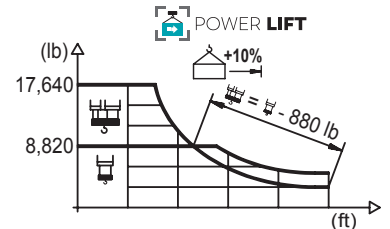
R (ft)	HSC					HSC																
213.3	45.6	55.8	65.6	72.2	81.4	87.9	98.4	106.6	114.8	123.0	131.2	139.4	147.6	155.8	164.0	172.2	180.4	188.6	196.9	205.1	213.3	ft
	17,640	13,910	11,460	10,210	8,820	8,820	7,780	7,100	6,530	6,020	5,580	5,200	4,850	4,540	4,280	4,030	3,810	3,620	3,420	3,240	3,090	lb
205.1	49.5	55.8	65.6	72.2	82.0	88.6	96.5	106.6	114.8	123.0	131.2	139.4	147.6	155.8	164.0	172.2	180.4	188.6	196.9	205.1	ft	
	17,640	15,370	12,700	11,330	9,700	8,820	8,820	7,850	7,230	6,680	6,190	5,780	5,400	5,070	4,760	4,500	4,250	4,030	3,840	3,640	lb	
196.9	55.4	65.6	72.2	82.0	88.6	99.1	107.9	114.8	123.0	131.2	139.4	147.6	155.8	164.0	172.2	180.4	188.6	196.9	ft			
	17,640	14,460	12,940	11,110	10,120	8,820	8,820	8,250	7,630	7,080	6,610	6,190	5,820	5,470	5,160	4,890	4,630	4,410	lb			
188.6	57.4	65.6	72.2	82.0	88.6	98.4	102.7	112.2	123.0	131.2	139.4	147.6	155.8	164.0	172.2	180.4	188.6	ft				
	17,640	15,060	13,470	11,600	10,560	9,300	8,820	8,820	7,940	7,390	6,900	6,460	6,060	5,710	5,400	5,110	lb					
180.4	58.7	65.6	72.2	82.0	88.6	98.4	105.6	115.5	123.0	131.2	139.4	147.6	155.8	164.0	172.2	180.4	ft					
	17,640	15,540	13,910	11,970	10,930	9,610	8,820	8,820	8,200	7,630	7,120	6,680	6,260	5,910	5,580	5,290	lb					
172.2	58.1	65.6	72.2	82.0	88.6	98.4	104.3	114.2	123.0	131.2	139.4	147.6	155.8	164.0	172.2	ft						
	17,640	15,340	13,710	11,790	10,760	9,480	8,820	8,820	8,090	7,540	7,030	6,590	6,190	5,840	5,510	lb						
164.0	62.7	72.2	82.0	88.6	98.4	106.6	112.9	123.4	131.2	139.4	147.6	155.8	164.0	ft								
	17,640	14,990	12,920	11,790	10,410	9,440	8,820	8,820	8,250	7,690	7,210	6,790	6,390	lb								
155.8	62.3	72.2	82.0	88.6	98.4	106.6	111.9	122.7	131.2	139.4	147.6	155.8	ft									
	17,640	14,860	12,790	11,680	10,300	9,350	8,820	8,820	8,160	7,630	7,140	6,720	lb									
147.6	65.6	72.2	82.0	88.6	98.4	106.6	117.8	129.3	131.2	139.4	147.6	ft										
	17,640	15,780	13,600	12,430	10,980	9,960	8,820	8,820	8,690	8,110	7,610	lb										
139.4	65.6	72.2	82.0	88.6	98.4	106.6	118.4	129.9	131.2	139.4	ft											
	17,640	15,850	13,670	12,480	11,020	10,010	8,820	8,820	8,730	8,160	lb											
131.2	65.6	72.2	82.0	88.6	98.4	106.6	117.8	129.9	131.2	ft												
	17,640	15,780	13,600	12,430	10,980	9,960	8,820	8,820	8,710	lb												
123.0	65.6	72.2	82.0	88.6	98.4	106.6	117.8	123.0	ft													
	17,640	15,780	13,600	12,430	10,980	9,960	8,820	lb														
114.8	66.3	72.2	82.0	88.6	98.4	106.6	113.4	ft														
	17,640	15,980	13,780	12,590	11,110	10,100	9,370	lb														
106.6	66.3	72.2	82.0	88.6	98.4	105.2	ft															
	17,640	15,960	13,760	12,590	11,110	10,250	lb															
98.4	65.9	72.2	82.0	88.6	97.0	ft																
	17,640	15,900	13,710	12,520	11,240	lb																



## DIAGRAMA DE CARGAS POWERLIFT

Load chart PowerLift / Diagramme de charges PowerLift / Lastdiagramm PowerLift / Diagramma di carico PowerLift / Диаграмма распределения нагрузки PowerLift

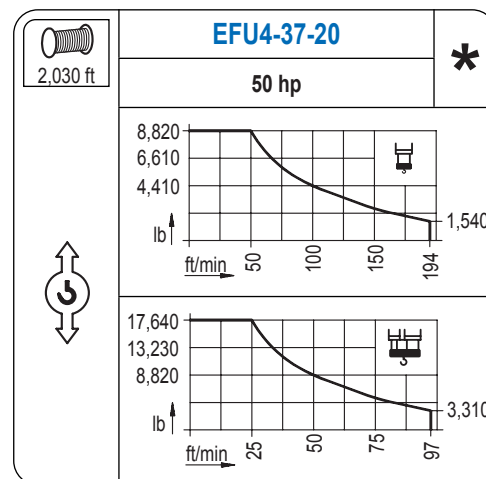
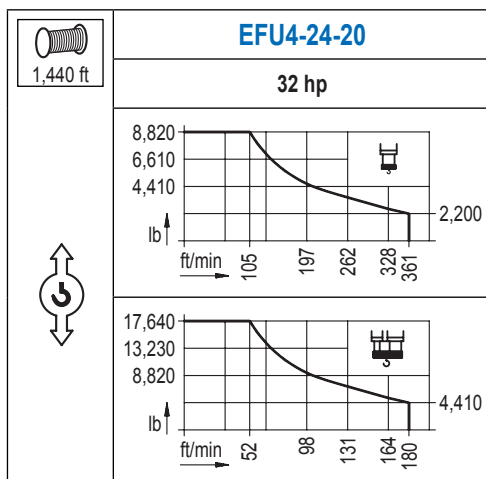
R (ft)	HSC					HSC																
213.3	48.9	59.1	65.6	72.2	82.0	87.3	94.8	106.6	114.8	123.0	131.2	139.4	147.6	155.8	164.0	172.2	180.4	188.6	196.9	205.1	213.3	ft
	17,640	14,130	12,480	11,130	9,550	8,820	8,820	7,720	7,100	6,550	6,080	5,670	5,310	4,980	4,670	4,410	4,170	3,950	3,750	3,570	3,400	lb
205.1	53.5	59.1	65.6	72.2	82.0	88.6	95.5	104.0	114.8	123.0	131.2	139.4	147.6	155.8	164.0	172.2	180.4	188.6	196.9	205.1	ft	
	17,640	15,670	13,840	12,390	10,630	9,680	8,820	8,820	7,890	7,300	6,770	6,310	5,910	5,560	5,220	4,940	4,670	4,430	4,210	4,010	lb	
196.9	59.7	65.6	72.2	82.0	88.6	98.4	107.3	116.8	123.0	131.2	139.4	147.6	155.8	164.0	172.2	180.4	188.6	196.9	ft			
	17,640	15,810	14,150	12,170	11,110	9,790	8,820	8,820	8,330	7,740	7,230	6,770	6,370	6,000	5,670	5,380	5,090	4,850	lb			
188.6	62.0	65.6	72.2	82.0	88.6	98.4	106.6	111.2	121.4	131.2	139.4	147.6	155.8	164.0	172.2	180.4	188.6	ft				
	17,640	16,490	14,770	12,720	11,620	10,230	9,280	8,820	8,820	8,090	7,540	7,080	6,660	6,280	5,930	5,620	5,340	lb				
180.4	63.6	72.2	82.0	88.6	98.4	106.6	114.5	125.3	131.2	139.4	147.6	155.8	164.0	172.2	180.4	ft						
	17,640	15,260	13,140	12,020	10,580	9,610	8,820	8,820	8,360	7,800	7,320	6,880	6,500	6,150	5,820	lb						
172.2	63.0	72.2	82.0	88.6	98.4	106.6	113.2	123.7	131.2	139.4	147.6	155.8	164.0	172.2	ft							
	17,640	15,060	12,960	11,840	10,450	9,480	8,820	8,820	8,270	7,720	7,230	6,790	6,420	6,060	lb							
164.0	67.9	72.2	82.0	88.6	98.4	106.6	114.8	122.4	134.2	139.4	147.6	155.8	164.0	ft								
	17,640	16,470	14,200	12,990	11,460	10,430	9,520	8,820	8,820	8,440	7,910	7,450	7,030	lb								
155.8	67.6	72.2	82.0	88.6	98.4	106.6	114.8	121.4	133.2	139.4	147.6	155.8	ft									
	17,640	16,310	14,090	12,870	11,350	10,320	9,440	8,820	8,820	8,380	7,870	7,410	lb									
147.6	71.2	82.0	88.6	98.4	106.6	114.8	123.0	128.3	140.7	147.6	ft											
	17,640	14,970	13,690	12,100	11,020	10,080	9,260	8,820	8,820	8,380	lb											
139.4	70.9	82.0	88.6	98.4	106.6	114.8	123.0	127.6	139.4	ft												
	17,640	14,900	13,620	12,040	10,960	10,030	9,220	8,820	8,820	lb												
131.2	70.5	82.0	88.6	98.4	106.6	114.8	127.3	131.2	ft													
	17,640	14,860	13,580	12,020	10,930	10,010	8,820	lb														
123.0	70.9	82.0	88.6	98.4	106.6	114.8	121.6	ft														
	17,640	14,880	13,600	12,040	10,930	10,010	9,350	lb														
114.8	71.5	82.0	88.6	98.4	106.6	113.4	ft															
	17,640	15,080	13,800	12,190	11,090	10,320	lb															
106.6	71.5	82.0	88.6	98.4	105.2	ft																
	17,640	15,080	13,800	12,210	11,290	lb																
98.4	71.5	82.0	88.6	97.0	ft																	
	17,640	15,040	13,760	lb																		



Datos válidos hasta 328 ft de ABG. Para alturas mayores consultar / Valid data up to 328 ft HUH. Additional heights on request / Données valables jusqu'à 328 ft HSC. Pour des autres hauteurs, merci de nous consulter / Gültige Daten bis zu 328 ft HH. Bei höheren Hakenhöhen nachfragen / Dati validi fino a 328 ft ASG. Per altezze superiori consultare Comansa / Допустимые данные до 328 фут ВГК. Для более высоких высот консультируйтесь

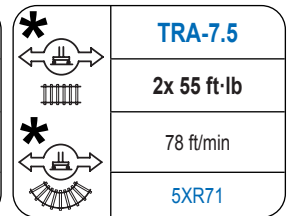
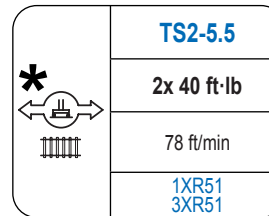
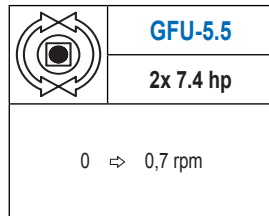
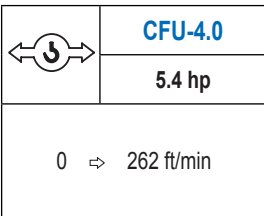
## MECANISMOS

Mechanisms / Mécanismes / Antriebe / Meccanismi / Механизмы



## MECANISMOS

Mechanisms / Mécanismes / Antriebe / Meccanismi / Механизмы



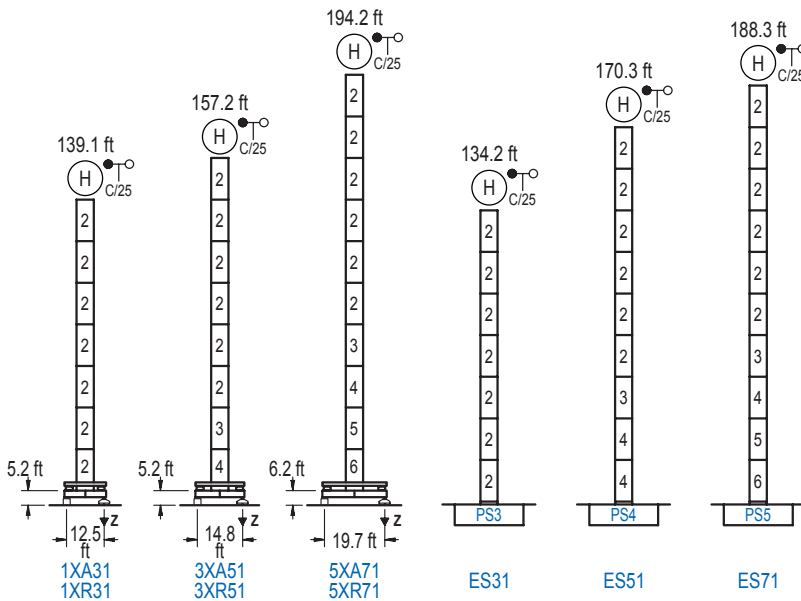
Elevación / Hoist / Leve / Hub / Sollevamento / Тип механизма (подъем)	Carro / Trolley / Chariot / Laufkatze / Carrelo / Грузовая тележка	Giro / Slewing / Rotation / Drehbewegung / Rotazione / Поворот	Traslación / Travel / Translation / Verfahrbewegung / Traslazione / Ход	Tensión de alimentación / Operating voltage / Tension de service / Betriebsspannung / Tensione di alimentazione / Напряжение источника питания	Potencia requerida / Required power / Puissance requise / Benötigte Leistung / Potenza richiesta / требуемая мощность
EFU4-24-20	CFU-4.0	(2x) GFU-5.5	(2x) TS2-5.5	480 V 3ph 60 Hz	36 kVA
EFU4-37-20			(2x) TRA-7.5	49 kVA	

Optional / Optional / En option / Kaufoption / Opzionale / Опционально
*

## ALTURAS BAJO GANCHO

Heights under hook / Hauteurs sous crochet / Hakenhöhen / Altezza sotto gancio / Высота под крюком

∅ 5.2 ft

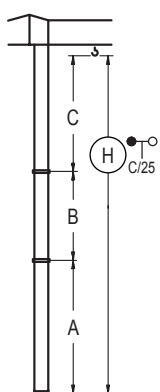


n°	Ref.	∅	h
2	S13	5.2	18.0
3	TS14	5.2	18.0
4	S14	5.2	18.0
5	TS15	5.2	18.0
6	S15	5.2	18.0
1x S13 = 1x S13M			
1x S15 = 1x S15M			

Z máx.	En servicio / In operation / En service / In Betrieb / In servizio / При работе	1XR31.. 159 kip 3XR51.. 154 kip 5XR71.. 152 kip
	Fuera de servicio / Out of service / Hors service / Ausser Betrieb / Fuori servizio / В стационарном состоянии	1XR31.. 150 kip 3XR51.. 170 kip 5XR71.. 212 kip

## GRÚA ARRIOSTRADA

Braced crane / Grue à entretoisement / Abgespannter Kran / Gru ancorata / Нарастиваемый кран



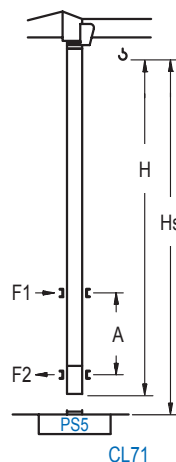
	1XA31	3XA51	5XA71
A max	95.5	113.5	150.6
A min	59.4	59.4	96.5
B max	-	72.2	72.2
B min	-	54.1	54.1
C max	115.8	115.8	115.8
H max	211.3	283.5	229.3
	283.5	301.5	266.4
	338.6		

	ES31	ES51	ES71
A max	90.6	126.6	144.7
A min	54.5	72.5	90.6
B max	-	72.2	72.2
B min	-	54.1	54.1
C max	115.8	115.8	115.8
H max	206.4	278.5	242.5
	314.6	260.5	332.7

## GRÚA TREPADORA

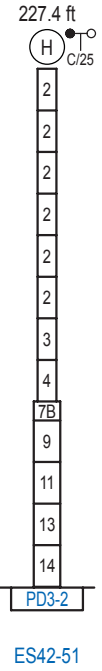
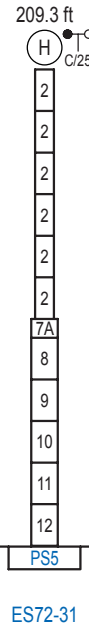
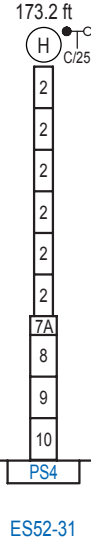
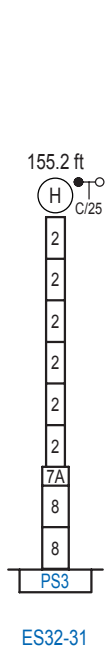
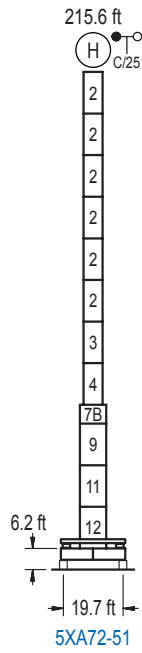
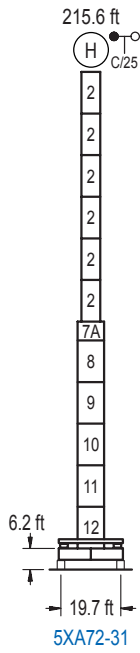
Internal climbing crane / Grue avec cage de télescopage intérieure / Kran mit klettern im Gebäude / Gru in rampante in cavedio / Кран с самоподъемом



H	Hs < 1,310 ft	
	A max (ft)	A min (ft)
144.0 ft S13J + 5x S13 + TS14 + TS15 + CLS15-08	55.1	36.1
126.0 ft S13J + 4x S13 + TS14 + TS15 + CLS15-08	46.3	29.5
107.9 ft S13J + 3x S13 + TS14 + TS15 + CLS15-08	37.4	23.0

Ref.	∅	h
S13	5.2	18.0
TS14	5.2	18.0
TS15	5.2	18.0
CLS15-08	5.2	10.2
1x S13 = 1x S13M		

Otras zonas de viento, alturas superiores, arriostramientos o trepado interno consultar / Other wind zones, additional hook heights, tie frames or internal climbing on request / Autres zones de vent, des hauteurs supplémentaires, entretoisements ou grues avec cage de télescopage intérieure, sur demande / Andere Windzonen, weitere Hakenhöhen, Abspannungen zum Gebäude oder Klettern im Gebäude auf Anfrage / Per zone con velocità del vento particolari, altezze superiori, ancoraggi o rampante in cavedio, consultare il fabbricante / При других ветренных зонах, при большой высоте, привязках к зданию или наращивании крана внутри здания проконсультируйтесь с нами



n°	Ref.	∅	h	n°	Ref.	∅	h	n°	Ref.	∅	h	n°	Ref.	∅	h
2	S13	5.2	18.0	7A	TMS23/PMS3	6.6	3.3	8	S23	6.6	18.0	13	TD23A	6.6	18.0
3	TS14	5.2	18.0	7B	TMS23/PMS4	6.6	3.3	9	TS24	6.6	18.0	14	D23	6.6	18.0
4	S14	5.2	18.0					10	S24	6.6	18.0				
5	TS15	5.2	18.0					11	TS25	6.6	18.0				
6	S15	5.2	18.0					12	S25	6.6	18.0				
1x S13 = 1x S13M								1x S23 = 1x S23M							
1x S15 = 1x S15M								1x S25 = 1x S25M							

Otras zonas de viento o alturas superiores consultar / Other wind zones or additional hook heights on request / Autres zones de vent ou des hauteurs supplémentaires sur demande / Andere Windzonen oder weitere Hakenhöhen auf Anfrage / Per zone con velocità del vento particolari o altezze superiori consultare il fabbricante / При других ветренных зонах о при большой высоте проконсультируйтесь с нами