

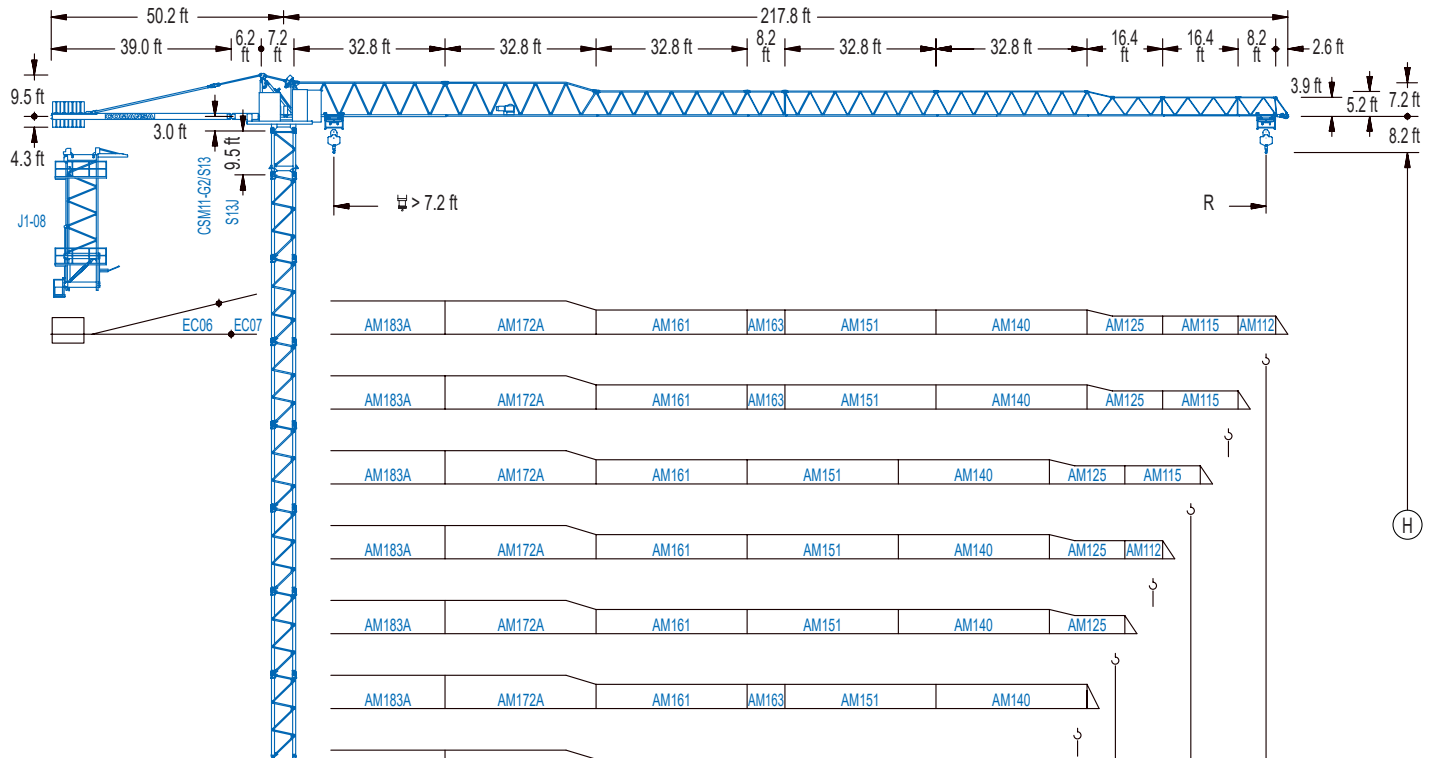


COMANSA

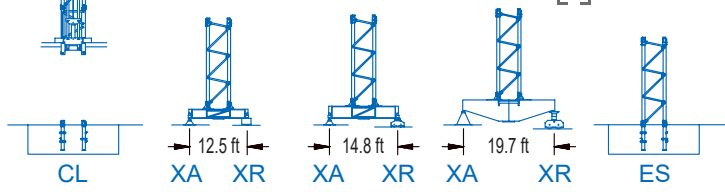
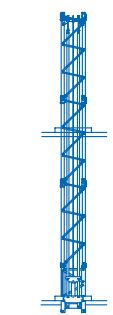
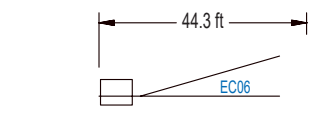
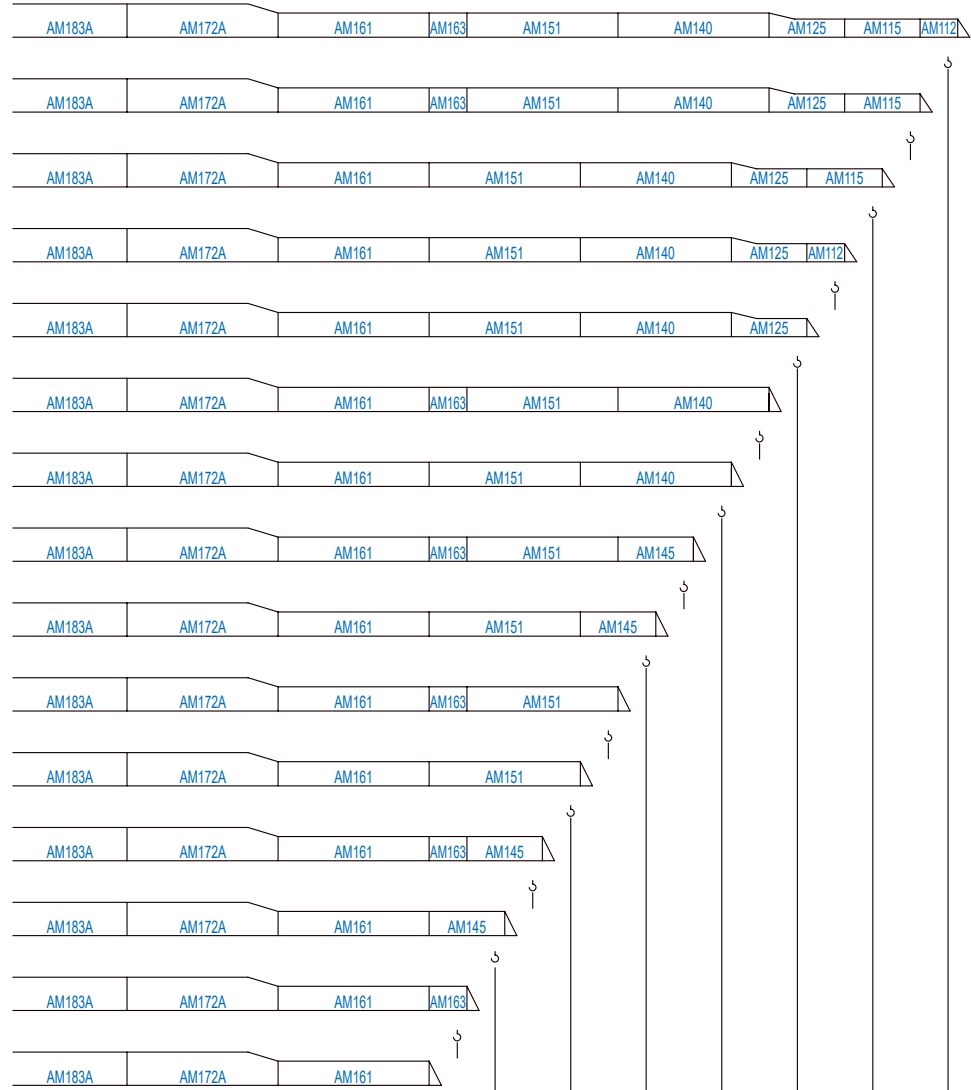
1100 Series

11 LC 160

RC 17,640 lb



1100 Series



R	ft	lb	lb
12,960	98.4	11,790	
11,880	106.6	10,800	
10,910	114.8	9,920	
9,940	123.0	9,040	
9,080	131.2	8,270	
8,490	139.4	7,720	
7,890	147.6	7,160	
6,920	155.8	6,280	
6,550	164.0	5,950	
5,480	172.2	5,070	
5,340	180.4	4,850	
4,850	188.6	4,410	
4,370	196.9	3,970	
3,530	205.1	3,200	
2,910	213.3	2,650	

POWER LIFT

CE EN 14439 (C/25)

DIAGRAMA DE CARGAS

Load chart / Diagramme de charges / Lastdiagramm / Diagramma di carico / Диаграмма распределения нагрузки

R (ft)	H										U											
213.3	45.3	55.8	65.6	72.2	83.0	88.6	98.4	106.6	114.8	123.0	131.2	139.4	147.6	155.8	164.0	172.2	180.4	188.6	196.9	205.1	213.3	ft
	17,640	13,890	11,550	10,360	8,820	8,160	7,210	6,550	5,970	5,490	5,070	4,700	4,370	4,080	3,810	3,570	3,350	3,150	2,980	2,800	2,650	lb
205.1	49.5	55.8	65.6	72.2	82.0	90.9	98.4	106.6	114.8	123.0	131.2	139.4	147.6	155.8	164.0	172.2	180.4	188.6	196.9	205.1	ft	
	17,640	15,410	12,830	11,510	9,940	8,820	8,050	7,320	6,700	6,170	5,690	5,290	4,920	4,590	4,300	4,030	3,790	3,570	3,370	3,200	lb	
196.9	55.4	65.6	72.2	82.0	88.6	102.4	106.6	114.8	123.0	131.2	139.4	147.6	155.8	164.0	172.2	180.4	188.6	196.9	ft			
	17,640	14,640	13,140	11,380	10,430	8,820	8,420	7,720	7,100	6,590	6,130	5,710	5,340	5,000	4,720	4,430	4,190	3,970	lb			
188.6	57.7	65.6	72.2	82.0	88.6	98.4	106.3	114.8	123.0	131.2	139.4	147.6	155.8	164.0	172.2	180.4	188.6	ft				
	17,640	15,280	13,710	11,880	10,890	9,660	8,820	8,070	7,450	6,900	6,420	5,970	5,600	5,250	4,940	4,670	4,410	lb				
180.4	59.4	65.6	72.2	82.0	88.6	98.4	109.6	114.8	123.0	131.2	139.4	147.6	155.8	164.0	172.2	180.4	ft					
	17,640	15,780	14,200	12,300	11,270	9,990	8,820	8,360	7,720	7,140	6,660	6,220	5,820	5,470	5,140	4,850	lb					
172.2	58.7	65.6	72.2	82.0	88.6	98.4	108.6	114.8	123.0	131.2	139.4	147.6	155.8	164.0	172.2	ft						
	17,640	15,610	14,020	12,150	11,130	9,880	8,820	8,250	7,610	7,050	6,570	6,130	5,730	5,380	5,070	lb						
164.0	63.6	72.2	82.0	88.6	98.4	106.6	117.8	123.0	131.2	139.4	147.6	155.8	164.0	ft								
	17,640	15,340	13,290	12,190	10,820	9,880	8,820	8,380	7,760	7,230	6,750	6,330	5,950	lb								
155.8	63.3	72.2	82.0	88.6	98.4	106.6	116.8	123.0	131.2	139.4	147.6	155.8	ft									
	17,640	15,230	13,180	12,100	10,740	9,810	8,820	8,310	7,720	7,160	6,700	6,280	lb									
147.6	66.9	72.2	82.0	88.6	98.4	106.6	114.8	123.7	131.2	139.4	147.6	ft										
	17,640	16,180	14,040	12,870	11,440	10,450	9,590	8,820	8,220	7,670	7,160	lb										
139.4	67.3	72.2	82.0	88.6	98.4	106.6	114.8	124.3	131.2	139.4	ft											
	17,640	16,290	14,130	12,960	11,510	10,520	9,660	8,820	8,290	7,720	lb											
131.2	67.3	72.2	82.0	88.6	98.4	106.6	114.8	124.0	131.2	ft												
	17,640	16,270	14,110	12,940	11,490	10,490	9,660	8,820	8,270	lb												
123.0	67.9	72.2	82.0	88.6	98.4	106.6	114.8	123.0	ft													
	17,640	16,490	14,310	13,120	11,660	10,650	9,790	9,040	lb													
114.8	68.9	72.2	82.0	88.6	98.4	106.6	114.8	ft														
	17,640	16,710	14,510	13,290	11,820	10,800	9,920	lb														
106.6	68.9	72.2	82.0	88.6	98.4	106.6	ft															
	17,640	16,710	14,510	13,320	11,820	10,800	lb															
98.4	68.9	72.2	82.0	88.6	98.4	ft																
	17,640	16,670	14,460	13,270	11,790	lb																

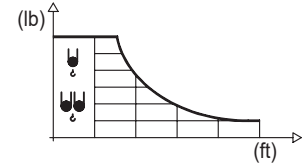
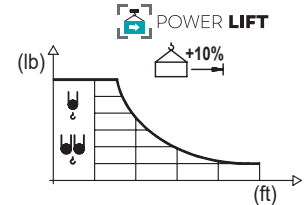


DIAGRAMA DE CARGAS POWERLIFT

Load chart PowerLift / Diagramme de charges PowerLift / Lastdiagramm PowerLift / Diagramma di carico PowerLift / Диаграмма распределения нагрузки PowerLift

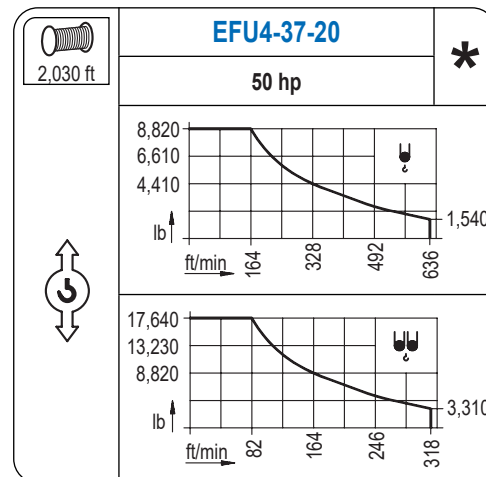
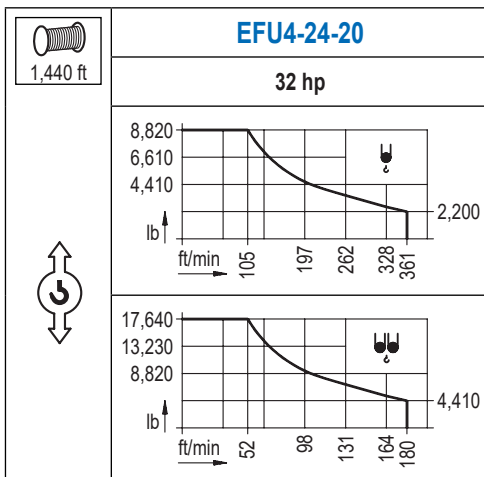
R (ft)	H										U											
213.3	48.2	55.8	65.6	72.2	82.0	88.6	98.4	106.6	114.8	123.0	131.2	139.4	147.6	155.8	164.0	172.2	180.4	188.6	196.9	205.1	213.3	ft
	17,640	14,950	12,430	11,160	9,630	8,820	7,780	7,080	6,480	5,950	5,510	5,110	4,740	4,430	4,140	3,900	3,660	3,440	3,260	3,090	2,910	lb
205.1	52.8	65.6	72.2	82.0	88.6	97.4	106.6	114.8	123.0	131.2	139.4	147.6	155.8	164.0	172.2	180.4	188.6	196.9	205.1	ft		
	17,640	13,840	12,430	10,760	9,830	8,820	7,940	7,280	6,700	6,190	5,750	5,360	5,030	4,700	4,410	4,170	3,920	3,700	3,530	lb		
196.9	59.7	65.6	72.2	82.0	88.6	98.4	110.2	114.8	123.0	131.2	139.4	147.6	155.8	164.0	172.2	180.4	188.6	196.9	ft			
	17,640	15,850	14,260	12,350	11,310	10,030	8,820	8,400	7,760	7,190	6,680	6,240	5,840	5,490	5,160	4,870	4,610	4,370	lb			
188.6	62.0	65.6	72.2	82.0	88.6	98.4	106.6	114.5	123.0	131.2	139.4	147.6	155.8	164.0	172.2	180.4	188.6	ft				
	17,640	16,580	14,900	12,920	11,840	10,490	9,590	8,820	8,110	7,540	7,010	6,550	6,130	5,780	5,420	5,140	4,850	lb				
180.4	64.0	72.2	82.0	88.6	98.4	106.6	118.4	123.0	131.2	139.4	147.6	155.8	164.0	172.2	180.4	ft						
	17,640	15,430	13,380	12,260	10,890	9,940	8,820	8,420	7,830	7,280	6,810	6,370	6,000	5,640	5,340	lb						
172.2	63.3	72.2	82.0	88.6	98.4	106.6	117.1	123.0	131.2	139.4	147.6	155.8	164.0	172.2	ft							
	17,640	15,260	13,230	12,130	10,760	9,830	8,820	8,330	7,720	7,190	6,720	6,310	5,910	5,580	lb							
164.0	68.9	72.2	82.0	88.6	98.4	106.6	114.8	127.3	131.2	139.4	147.6	155.8	164.0	ft								
	17,640	16,710	14,510	13,320	11,820	10,800	9,920	8,820	8,510	7,940	7,410	6,970	6,550	lb								
155.8	68.2	72.2	82.0	88.6	98.4	106.6	114.8	126.6	131.2	139.4	147.6	155.8	ft									
	17,640	16,600	14,420	13,230	11,750	10,740	9,850	8,820	8,470	7,870	7,360	6,920	lb									
147.6	72.2	82.0	88.6	98.4	106.6	114.8	123.0	134.2	139.4	147.6	ft											
	17,640	15,340	14,090	12,520	11,440	10,520	9,720	8,820	8,420	7,890	lb											
139.4	72.8	82.0	88.6	98.4	106.6	114.8	123.0	134.8	139.4	ft												
	17,640	15,450	14,200	12,610	11,530	10,600	9,810	8,820	8,490	lb												
131.2	72.8	82.0	88.6	98.4	106.6	114.8	123.0	131.2	ft													
	17,640	15,430	14,180	12,610	11,510	10,580	9,790	9,080	lb													
123.0	73.8	82.0	88.6	98.4	106.6	114.8	123.0	ft														
	17,640	15,670	14,400	12,790	11,680	10,760	9,940	lb														
114.8	74.8	82.0	88.6	98.4	106.6	114.8	ft															
	17,640	15,900	14,590	12,990	11,860	10,910	lb															
106.6	74.8	82.0	88.6	98.4	106.6	ft																
	17,640	15,920	14,620	13,010	11,880	lb																
98.4	74.8	82.0	88.6	98.4	ft																	
	17,640	15,900	14,590	12,960	lb																	



Datos válidos hasta 328 ft de ABG. Para alturas mayores consultar / Valid data up to 328 ft HUH. Additional heights on request / Données valables jusqu'à 328 ft HSC. Pour des autres hauteurs, merci de nous consulter / Gültige Daten bis zu 328 ft HH. Bei höheren Hakenhöhen nachfragen / Dati validi fino a 328 ft ASG. Per altezze superiori consultare Comansa / Допустимые данные до 328 фут ВГК. Для более высоких высот консультируйтесь


MECANISMOS


Mechanisms / Mécanismes / Antriebe / Meccanismi / Механизмы

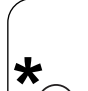


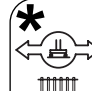
MECANISMOS

Mechanisms / Mécanismes / Antriebe / Meccanismi / Механизмы

	CFU-4.0
	5.4 hp
0 ⇔ 262 ft/min	

	GFU-5.5
	2x 7.4 hp
0 ⇔ 0,7 rpm	

	TS2-5.5
	2x 40 ft·lb
	78 ft/min
	1XR51 3XR51

	TRA-7.5
	2x 55 ft·lb
	78 ft/min
	5XR71

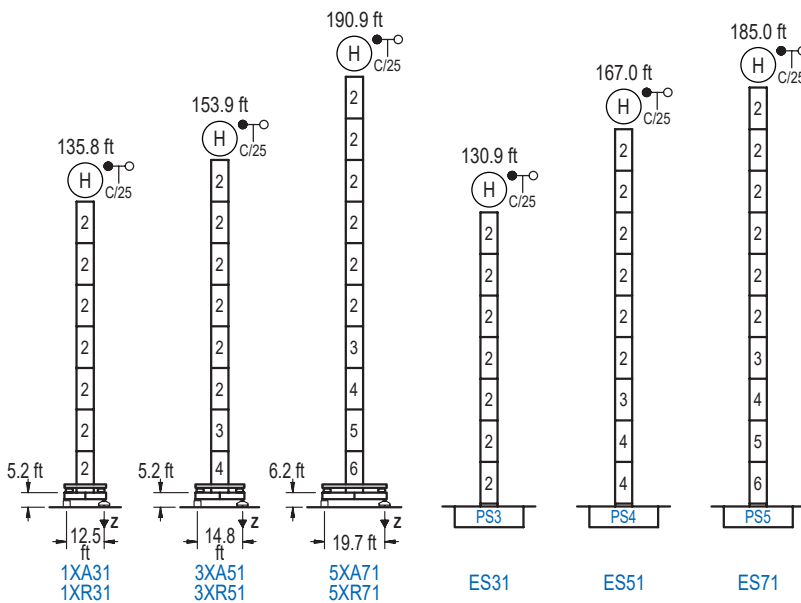
Elevación / Hoist / Leve / Hub / Sollevamento / Тип механизма (подъем)	Carro / Trolley / Chariot / Laufkatze / Carrello / Грузовая тележка	Giro / Slewing / Rotation / Drehbewegung / Rotazione / Поворот	Traslación / Travel / Translation / Verfahrbewegung / Traslazione / Ход	Tensión de alimentación / Operating voltage / Tension de service / Betriebsspannung / Tensione di alimentazione / Напряжение источника питания	Potencia requerida / Required power / Puissance requise / Benötigte Leistung / Potenza richiesta / требуемая мощность
EFU4-24-20	CFU-4.0	(2x) GFU-5.5	(2x) TS2-5.5 (2x) TRA-7.5	480 V 3ph 60 Hz	36 kVA
EFU4-37-20					49 kVA

Opcional / Optional / En option / Kaufoption / Opzionale / Опционально
*

ALTURAS BAJO GANCHO

Heights under hook / Hauteurs sous crochet / Hakenhöhen / Altezza sotto gancio / Высота под крюком

∅ 5.2 ft

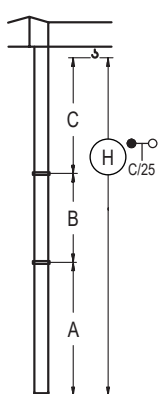


n°	Ref.	∅	h
2	S13	5.2	18.0
3	TS14	5.2	18.0
4	S14	5.2	18.0
5	TS15	5.2	18.0
6	S15	5.2	18.0
1x S13 = 1x S13M			
1x S15 = 1x S15M			

Z máx.	En servicio / In operation / En service / In Betrieb / In servizio / При работе	1XR31.. 159 kip 3XR51.. 154 kip 5XR71.. 152 kip
	Fuera de servicio / Out of service / Hors service / Ausser Betrieb / Fuori servizio / В стационарном состоянии	1XR31.. 150 kip 3XR51.. 170 kip 5XR71.. 212 kip

GRÚA ARRIOSTRADA

Braced crane / Grue à entretoisement / Abgespannter Kran / Gru ancorata / Нарастиваемый кран

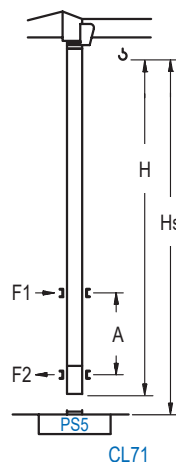


	1XA31	3XA51	5XA71
A max	95.5	113.5	150.6
A min	59.4	59.4	96.5
B max	-	72.2	72.2
B min	-	54.1	54.1
C max	112.5	112.5	112.5
H max	208.0	280.2	335.3

	ES31	ES51	ES71
A max	90.6	126.6	144.7
A min	54.5	72.5	90.6
B max	-	72.2	72.2
B min	-	54.1	54.1
C max	112.5	112.5	112.5
H max	203.1	275.3	329.4

GRÚA TREPADORA

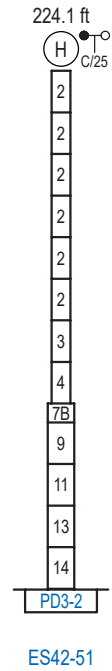
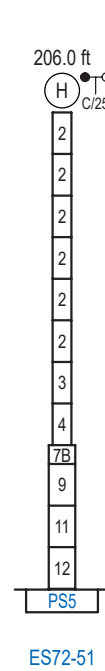
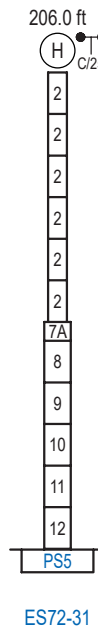
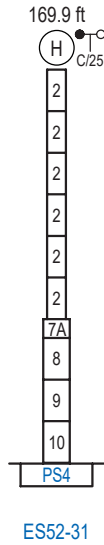
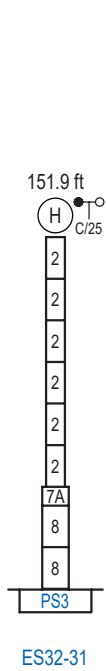
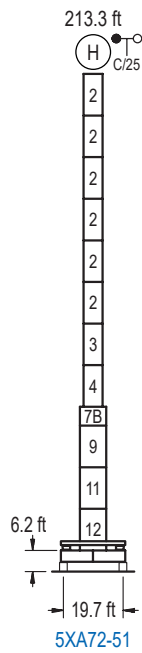
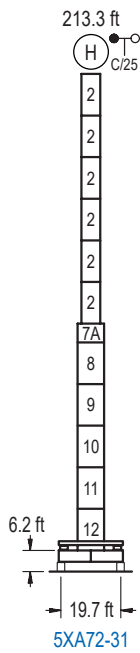
Internal climbing crane / Grue avec cage de télescopage intérieure / Kran mit klettern im Gebäude / Gru in rampante in cavedio / Кран с самоподъемом



H < 1,310 ft	A max (ft) / A min (ft)	
	140.7 ft S13J + 5x S13 + TS14 + TS15 + CLS15-08	55.1
122.7 ft S13J + 4x S13 + TS14 + TS15 + CLS15-08	46.3	29.5
104.7 ft S13J + 3x S13 + TS14 + TS15 + CLS15-08	37.4	23.0

Ref.	∅	h
S13	5.2	18.0
TS14	5.2	18.0
TS15	5.2	18.0
CLS15-08	5.2	10.2
1x S13 = 1x S13M		

Otras zonas de viento, alturas superiores, arriostramientos o trepado interno consultar / Other wind zones, additional hook heights, tie frames or internal climbing on request / Autres zones de vent, des hauteurs supplémentaires, entretoisements ou grues avec cage de télescopage intérieure, sur demande / Andere Windzonen, weitere Hakenhöhen, Abspannungen zum Gebäude oder Klettern im Gebäude auf Anfrage / Per zone con velocità del vento particolari, altezze superiori, ancoraggi o rampante in cavedio, consultare il fabbricante / При других ветренных зонах, при большой высоте, привязках к зданию или наращивании крана внутри здания проконсультируйтесь с нами



n°	Ref.	∅	h	n°	Ref.	∅	h	n°	Ref.	∅	h	n°	Ref.	∅	h
2	S13	5.2	18.0	7A	TMS23/PMS3	6.6	3.3	8	S23	6.6	18.0	13	TD23A	6.6	18.0
3	TS14	5.2	18.0	7B	TMS23/PMS4	6.6	3.3	9	TS24	6.6	18.0	14	D23	6.6	18.0
4	S14	5.2	18.0					10	S24	6.6	18.0				
5	TS15	5.2	18.0					11	TS25	6.6	18.0				
6	S15	5.2	18.0					12	S25	6.6	18.0				
1x S13 = 1x S13M								1x S23 = 1x S23M							
1x S15 = 1x S15M								1x S25 = 1x S25M							

Otras zonas de viento o alturas superiores consultar / Other wind zones or additional hook heights on request / Autres zones de vent ou des hauteurs supplémentaires sur demande / Andere Windzonen oder weitere Hakenhöhen auf Anfrage / Per zone con velocità del vento particolari o altezze superiori consultare il fabbricante / При других ветренных зонах о при большой высоте проконсультируйтесь с нами