

DIAGRAMA DE CARGAS

Load chart / Diagramme de charges / Lastdiagramm / Diagramma di carico / Диаграмма распределения нагрузки

R (ft)																	
172.2	49.2	59.1	65.6	75.5	84.3	95.5	98.4	108.3	114.8	123.0	131.2	139.4	147.6	155.8	164.0	172.2	ft
	11,020	8,770	7,690	6,420	5,510	5,510	5,310	4,740	4,410	4,060	3,750	3,480	3,240	3,020	2,820	2,650	lb
164.0	52.5	59.1	65.6	75.5	82.0	90.2	102.4	108.3	114.8	123.0	131.2	139.4	147.6	155.8	164.0	ft	
	11,020	9,520	8,330	6,970	6,260	5,510	5,510	5,160	4,810	4,410	4,080	3,790	3,530	3,310	3,090	lb	
155.8	52.5	59.1	65.6	75.5	82.0	90.2	102.7	108.3	114.8	123.0	131.2	139.4	147.6	155.8	ft		
	11,020	9,520	8,360	6,990	6,260	5,510	5,510	5,160	4,810	4,430	4,100	3,790	3,550	3,310	lb		
147.6	54.8	59.1	65.6	75.5	82.0	91.9	94.2	107.3	114.8	123.0	131.2	139.4	147.6	ft			
	11,020	10,050	8,820	7,390	6,610	5,690	5,510	5,510	5,090	4,670	4,320	4,010	3,750	lb			
139.4		56.4	65.6	75.5	82.0	91.9	97.1	110.9	114.8	123.0	131.2	139.4	ft				
		11,020	9,150	7,670	6,900	5,930	5,510	5,510	5,290	4,870	4,500	4,190	lb				
131.2		57.4	65.6	75.5	82.0	91.9	99.1	113.2	114.8	123.0	131.2	ft					
		11,020	9,390	7,870	7,080	6,110	5,510	5,510	5,420	5,000	4,630	lb					
123.0		57.1	65.6	75.5	82.0	91.9	98.1	112.5	114.8	123.0	ft						
		11,020	9,280	7,780	7,010	6,040	5,510	5,510	5,380	4,960	lb						
114.8		58.1	65.6	75.5	82.0	91.9	98.4	100.1	114.8	ft							
		11,020	9,500	7,980	7,160	6,170	5,640	5,510	5,510	lb							
98.4		56.4	65.6	75.5	82.0	91.9	ft										
		11,020	9,150	7,670	6,880	5,930	5,510	lb									

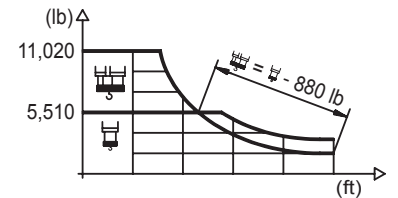
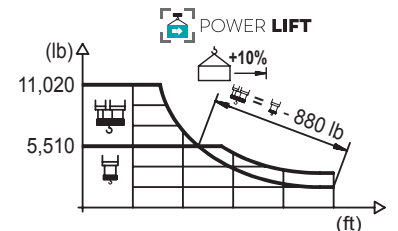


DIAGRAMA DE CARGAS POWERLIFT

Load chart PowerLift / Diagramme de charges PowerLift / Lastdiagramm PowerLift / Diagramma di carico PowerLift / Диаграмма распределения нагрузки PowerLift

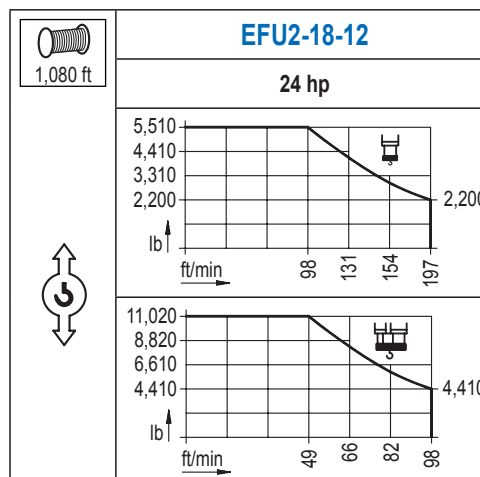
R (ft)																	
172.2	52.8	59.1	65.6	75.5	82.0	90.6	102.7	108.3	114.8	123.0	131.2	139.4	147.6	155.8	164.0	172.2	ft
	11,020	9,570	8,400	7,010	6,280	5,510	5,510	5,180	4,830	4,430	4,100	3,810	3,550	3,310	3,110	2,910	lb
164.0	56.4	59.1	65.6	75.5	82.0	91.9	96.8	110.2	114.8	123.0	131.2	139.4	147.6	155.8	164.0	ft	
	11,020	10,410	9,130	7,650	6,880	5,910	5,510	5,510	5,250	4,830	4,480	4,140	3,880	3,620	3,400	lb	
155.8	56.4	59.1	65.6	75.5	82.0	91.9	97.1	110.6	114.8	123.0	131.2	139.4	147.6	155.8	ft		
	11,020	10,430	9,150	7,670	6,900	5,930	5,510	5,510	5,270	4,850	4,500	4,170	3,880	3,640	lb		
147.6		59.1	65.6	75.5	82.0	91.9	98.4	101.4	115.8	123.0	131.2	139.4	147.6	ft			
		11,020	9,660	8,110	7,300	6,310	5,750	5,510	5,510	5,140	4,760	4,410	4,120	lb			
139.4		61.0	65.6	75.5	82.0	91.9	98.4	105.0	120.1	123.0	131.2	139.4	ft				
		11,020	10,050	8,470	7,610	6,570	6,000	5,510	5,510	5,360	4,960	4,610	lb				
131.2		62.0	65.6	75.5	82.0	91.9	98.4	107.3	122.7	123.0	131.2	ft					
		11,020	10,320	8,690	7,830	6,770	6,170	5,510	5,510	5,490	5,090	lb					
123.0		61.7	65.6	75.5	82.0	91.9	98.4	106.3	122.0	123.0	ft						
		11,020	10,230	8,600	7,740	6,700	6,110	5,510	5,510	5,470	lb						
114.8		63.0	65.6	75.5	82.0	91.9	98.4	108.3	114.8	ft							
		11,020	10,450	8,820	7,940	6,860	6,260	5,510	5,510	lb							
98.4		60.4	65.6	75.5	82.0	91.9	ft										
		11,020	9,960	8,380	7,540	6,530	6,060	lb									



Datos válidos hasta 328 ft de ABG. Para alturas mayores consultar / Valid data up to 328 ft HUH. Additional heights on request / Données valables jusqu'à 328 ft HSC. Pour des autres hauteurs, merci de nous consulter / Gültige Daten bis zu 328 ft HH. Bei höheren Hakenhöhen nachfragen / Dati validi fino a 328 ft ASG. Per altezze superiori consultare Comansa / Допустимые данные до 328 фут ВПК. Для более высоких высот консультируйтесь


MECANISMOS


Mechanisms / Mécanismes / Antriebe / Meccanismi / Механизмы

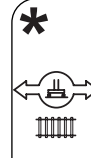


MECANISMOS

Mechanisms / Mécanismes / Antriebe / Meccanismi / Механизмы

	CFU-2.2
	3 hp
0 ⇔ 262 ft/min	

	GFU-5.5
	2x 7.4 hp
0 ⇔ 0,7 rpm	

	TS2-4.5	TS2-5.5
	2x 33 ft·lb	2x 40 ft·lb
	78 ft/min	
	XR2H	XR3H

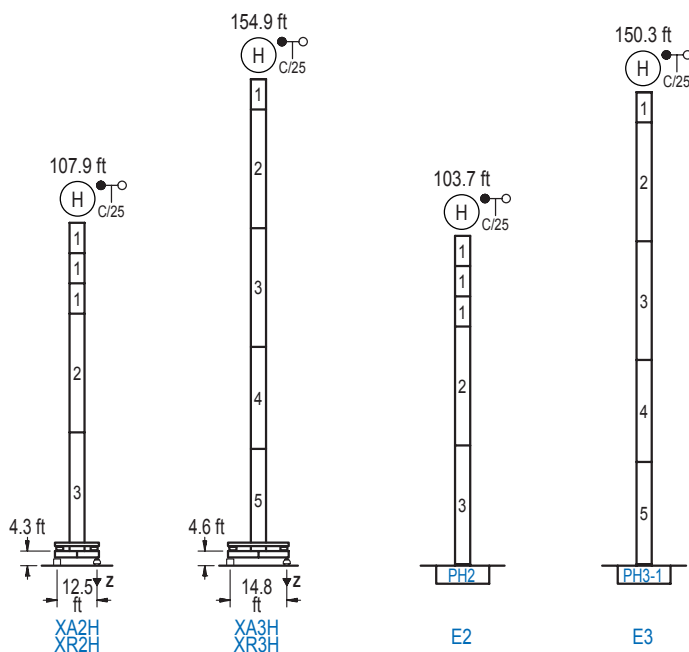
Elevación / Hoist / Levege / Hub / Sollevamento / Тип механизма (подъем)	Carro / Trolley / Chariot / Laufkatze / Carrelo / Грузовая тележка	Giro / Slewing / Rotation / Drehbewegung / Rotazione / Поворот	Traslación / Travel / Translation / Verfahrbewegung / Traslazione / Ход	Tensión de alimentación / Operating voltage / Tension de service / Betriebsspannung / Tensione di alimentazione / Напряжение источника питания	Potencia requerida / Required power / Puissance requise / Benötigte Leistung / Potenza richiesta / требуемая мощность
EFU2-18-12	CFU-2.2	(2x) GFU-5.5	(2x) TS2-4.5 (2x) TS2-5.5	480 V 3ph 60 Hz	29 kVA


Optional / Optional / En option / Kaufoption / Opzionale / Опционально
*





ALTURAS BAJO GANCHO

Heights under hook / Hauteurs sous crochet / Hakenhöhen / Altezza sotto gancio / Высота под крюком

∅ 3.9 ft



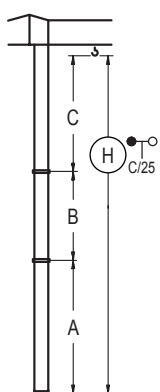
	n°	Ref.	∅	h
	1	MH121	3.9	9.8
	2	MH124-1	3.9	38.7
	3	MH124A	3.9	38.7
	4	MT123A	3.9	33.1
	5	MT123	3.9	33.1
MH124-1 = 4x MH121 - 0.7 ft				

	H = H + 0.7 ft
	H = H
	H = H
	H = H - 0.7 ft

Z máx.	En servicio / In operation / En service / In Betrieb / In servizio / При работе	XR2H..... 95 kip XR3H..... 112 kip
	Fuera de servicio / Out of service / Hors service / Ausser Betrieb / Fuori servizio / В стационарном состоянии	XR2H..... 93 kip XR3H... 165 kip

GRÚA ARRIOSTRADA

Braced crane / Grue à entretoisement / Abgespannter Kran / Gru ancorata / Нарастиваемый кран

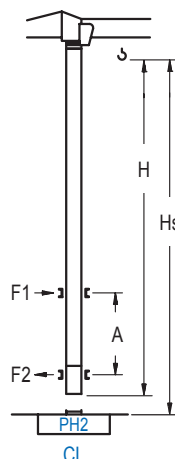



	XA2H		XA3H	
A max	91.5		139.1	
A min	62.7		109.6	
B max	-	59.1	-	59.1
B min	-	39.4	-	39.4
C max	79.1	79.1	79.1	79.1
H max	170.6	229.7	218.2	277.2


	E2		E3	
A max	87.3		134.5	
A min	58.4		105.0	
B max	-	59.1	-	59.1
B min	-	39.4	-	39.4
C max	79.1	79.1	79.1	79.1
H max	166.3	225.4	213.6	272.6

GRÚA TREPADORA

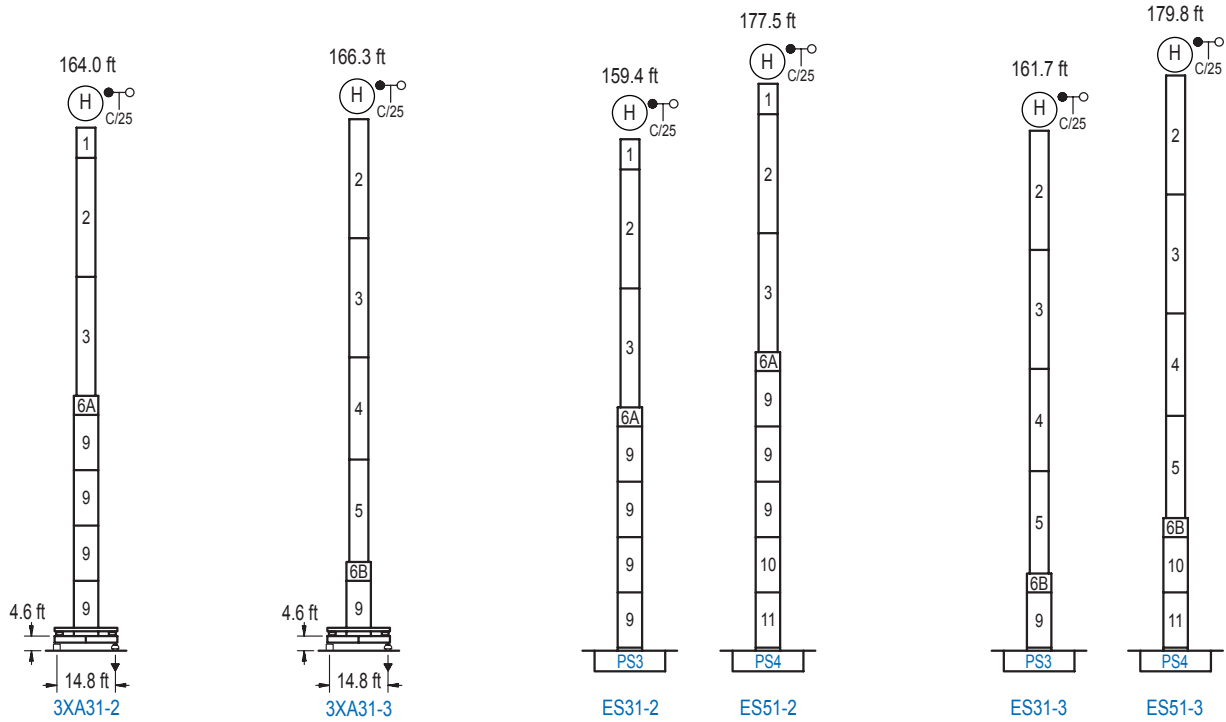
Internal climbing crane / Grue avec cage de télescopage intérieure / Kran mit klettern im Gebäude / Gru in rampante in cavedio / Кран с самоподъемом



	Hs < 980 ft	
	A max (ft)	A min (ft)
102.4 ft 6x MH121 + 4x MT12-3A + CL20A	39.4	19.7
92.5 ft 5x MH121 + 4x MT12-3A + CL20A	32.8	19.7
82.7 ft 4x MH121 + 4x MT12-3A + CL20A	27.9	16.4

	h (ft)	∅
Ref.	∅	h
MH121	3.9	9.8
MT12-3A	3.9	9.5
CL20A	3.9	8.5

Otras zonas de viento, alturas superiores, arriostramientos o trepado interno consultar / Other wind zones, additional hook heights, tie frames or internal climbing on request / Autres zones de vent, des hauteurs supplémentaires, entretoisements ou grues avec cage de télescopage intérieure, sur demande / Andere Windzonen, weitere Hakenhöhen, Abspannungen zum Gebäude oder Klettern im Gebäude auf Anfrage / Per zone con velocità del vento particolari, altezze superiori, ancoraggi o rampante in cavedio, consultare il fabbricante / При других ветренных зонах, при большой высоте, привязках к зданию или наращивании крана внутри здания проконсультируйтесь с нами



n°	Ref.	∅	h	n°	Ref.	∅	h	n°	Ref.	∅	h
1	MH121	3.9	9.8	6A	TMS13/PMH12	5.2	3.3	9	S13	5.2	18.0
2	MH124-1	3.9	38.7	6B	TMS13/PMH13	5.2	3.3	10	TS14	5.2	18.0
3	MH124A	3.9	38.7					11	S14	5.2	18.0
4	MT123A	3.9	33.1					12	TS15	5.2	18.0
5	MT123	3.9	33.1					13	S15	5.2	18.0
MH124-1 = 4x MH121 - 0.7 ft								1x S13 = 1x S13M 1x S15 = 1x S15M			

Otras zonas de viento o alturas superiores consultar / Other wind zones or additional hook heights on request / Autres zones de vent ou des hauteurs supplémentaires sur demande / Andere Windzonen oder weitere Hakenhöhen auf Anfrage / Per zone con velocità del vento particolari o altezze superiori consultare il fabbricante / При других ветренных зонах о при большой высоте проконсультируйтесь с нами