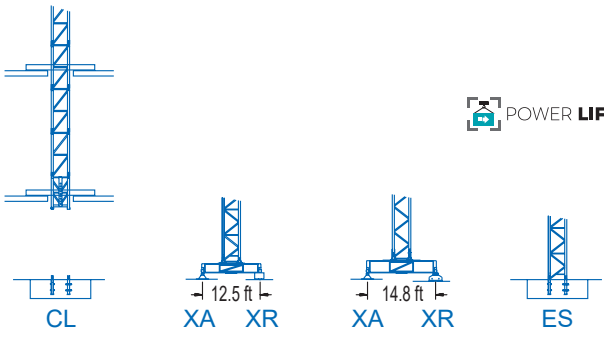


(H) [H] = H - 0.7 ft

R	98.4	114.8	123.0	131.2	139.4	147.6	155.8	164.0	172.2
ft	6,390	5,510	4,960	4,630	4,190	3,750	3,310	3,090	2,650
lb	6,610	6,060	5,470	5,090	4,610	4,120	3,640	3,400	2,910

POWER LIFT



1100 Series

DIAGRAMA DE CARGAS

Load chart / Diagramme de charges / Lastdiagramm / Diagramma di carico / Диаграмма распределения нагрузки

R (ft)																		
172.2	42.3 13,230	49.2 11,020	59.1 8,770	65.6 7,690	73.8 6,610	81.7 6,610	91.9 5,780	98.4 5,310	108.3 4,740	114.8 4,410	123.0 4,060	131.2 3,750	139.4 3,480	147.6 3,240	155.8 3,020	164.0 2,820	172.2 2,650	ft lb
164.0	45.3 13,230	49.2 11,900	59.1 9,520	65.6 8,330	78.7 6,610	87.6 6,610	91.9 6,260	98.4 5,780	108.3 5,160	114.8 4,810	123.0 4,410	131.2 4,080	139.4 3,790	147.6 3,530	155.8 3,310	164.0 3,090	ft lb	
155.8	45.3 13,230	49.2 11,930	59.1 9,520	65.6 8,360	78.7 6,610	87.6 6,610	91.9 6,260	98.4 5,780	108.3 5,160	114.8 4,810	123.0 4,430	131.2 4,100	139.4 3,790	147.6 3,550	155.8 3,310	ft lb		
147.6		47.2 13,230	59.1 10,050	65.6 8,820	75.5 7,390	82.0 6,610	91.9 6,610	98.4 6,080	108.3 5,450	114.8 5,090	123.0 4,670	131.2 4,320	139.4 4,010	147.6 3,750	ft lb			
139.4		48.6 13,230	59.1 10,430	65.6 9,150	75.5 7,670	84.6 6,610	94.8 6,610	98.4 6,330	108.3 5,670	114.8 5,290	123.0 4,870	131.2 4,500	139.4 4,190	ft lb				
131.2		49.5 13,230	59.1 10,670	65.6 9,390	75.5 7,870	82.0 7,080	86.3 6,610	96.8 6,610	108.3 5,820	114.8 5,420	123.0 5,000	131.2 4,630	ft lb					
123.0		49.2 13,230	59.1 10,580	65.6 9,280	75.5 7,780	82.0 7,010	85.6 6,610	96.1 6,610	108.3 5,780	114.8 5,380	123.0 4,960	ft lb						
114.8		49.9 13,230	59.1 10,800	65.6 9,500	75.5 7,980	82.0 7,160	87.3 6,610	98.1 6,610	108.3 5,910	114.8 5,510	ft lb							
98.4		48.6 13,230	59.1 10,410	65.6 9,150	75.5 7,670	84.6 6,610	95.5 6,610	98.4 6,390	ft lb									

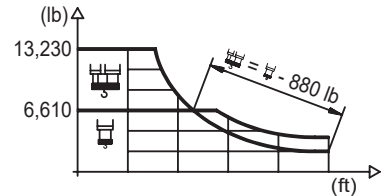
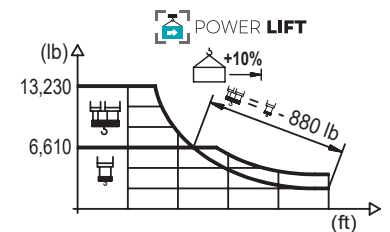


DIAGRAMA DE CARGAS POWERLIFT

Load chart PowerLift / Diagramme de charges PowerLift / Lastdiagramm PowerLift / Diagramma di carico PowerLift / Диаграмма распределения нагрузки PowerLift

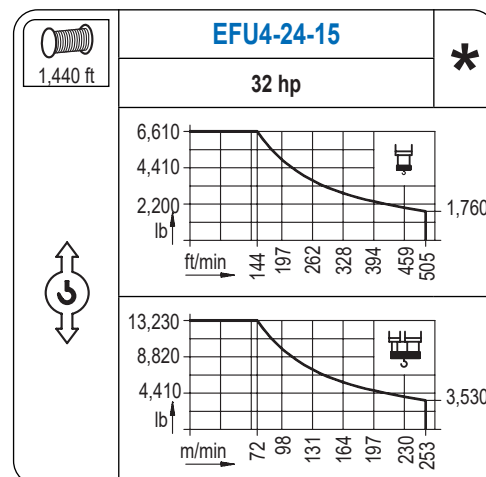
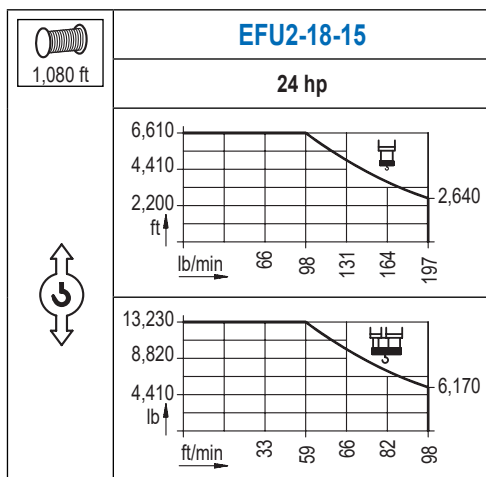
R (ft)																		
172.2	45.3 13,230	49.2 11,970	59.1 9,570	65.6 8,400	75.5 7,010	79.1 6,610	87.9 6,610	98.4 5,780	108.3 5,180	114.8 4,830	123.0 4,430	131.2 4,100	139.4 3,810	147.6 3,550	155.8 3,310	164.0 3,110	172.2 2,910	ft lb
164.0		48.6 13,230	59.1 10,410	65.6 9,130	75.5 7,650	84.6 6,610	94.2 6,610	98.4 6,280	108.3 5,620	114.8 5,250	123.0 4,830	131.2 4,480	139.4 4,140	147.6 3,880	155.8 3,620	164.0 3,400	ft lb	
155.8		48.6 13,230	59.1 10,430	65.6 9,150	75.5 7,670	84.6 6,610	94.5 6,610	98.4 6,310	108.3 5,640	114.8 5,270	123.0 4,850	131.2 4,500	139.4 4,170	147.6 3,880	155.8 3,640	ft lb		
147.6		50.5 13,230	59.1 11,000	65.6 9,660	75.5 8,110	82.0 7,300	88.6 6,610	99.1 6,610	108.3 5,970	114.8 5,580	123.0 5,140	131.2 4,760	139.4 4,410	147.6 4,120	ft lb			
139.4		52.2 13,230	59.1 11,420	65.6 10,050	75.5 8,470	82.0 7,610	91.5 6,610	102.7 6,610	108.3 6,220	114.8 5,800	123.0 5,360	131.2 4,960	139.4 4,610	ft lb				
131.2		53.5 13,230	59.1 11,730	65.6 10,320	75.5 8,690	82.0 7,830	93.5 6,610	105.0 6,610	108.3 6,370	114.8 5,950	123.0 5,490	131.2 5,090	ft lb					
123.0		53.1 13,230	59.1 11,620	65.6 10,230	75.5 8,600	82.0 7,740	92.8 6,610	104.3 6,610	108.3 6,330	114.8 5,910	123.0 5,470	ft lb						
114.8		54.1 13,230	59.1 11,880	65.6 10,450	75.5 8,820	82.0 7,940	94.5 6,610	106.6 6,610	108.3 6,480	114.8 6,060	ft lb							
98.4		51.8 13,230	59.1 11,330	65.6 9,960	75.5 8,380	82.0 7,540	90.9 6,610	98.4 6,610	ft lb									



Datos válidos hasta 328 ft de ABG. Para alturas mayores consultar / Valid data up to 328 ft HUH. Additional heights on request / Données valables jusqu'à 328 ft HSC. Pour des autres hauteurs, merci de nous consulter / Gültige Daten bis zu 328 ft HH. Bei höheren Hakenhöhen nachfragen / Dati validi fino a 328 ft ASG. Per altezze superiori consultare Comansa / Допустимые данные до 328 фут ВГК. Для более высоких высот консультируйтесь


MECANISMOS


Mechanisms / Mécanismes / Antriebe / Meccanismi / Механизмы

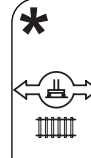


MECANISMOS

Mechanisms / Mécanismes / Antriebe / Meccanismi / Механизмы

	CFU-4.0
	5.4 hp
0 ⇔ 262 ft/min	

	GFU-5.5
	2x 7.4 hp
0 ⇔ 0,7 rpm	

	TS2-4.5	TS2-5.5
	2x 33 ft-lb	2x 40 ft-lb
	78 ft/min	
	XR2H	XR3H

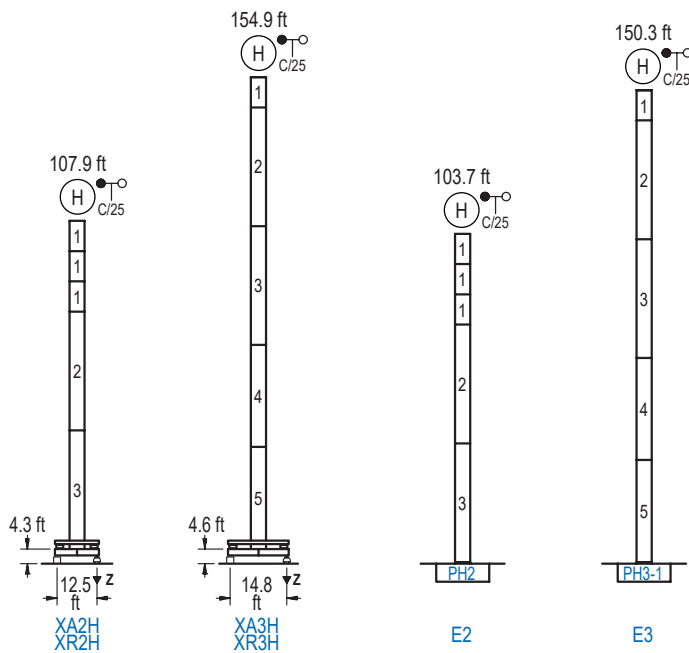
Elevación / Hoist / Levege / Hub / Sollevamento / Тип механизма (подъем)	Carro / Trolley / Chariot / Laufkatze / Carrelo / Грузовая тележка	Giro / Slewing / Rotation / Drehbewegung / Rotazione / Поворот	Traslación / Travel / Translation / Verfahrbewegung / Traslazione / Ход	Tensión de alimentación / Operating voltage / Tension de service / Betriebsspannung / Tensione di alimentazione / Напряжение источника питания	Potencia requerida / Required power / Puissance requise / Benötigte Leistung / Potenza richiesta / требуемая мощность
EFU2-18-15	CFU-4.0	(2x) GFU-5.5	(2x) TS2-4.5	480 V 3ph 60 Hz	29 kVA
EFU4-24-15			(2x) TS2-5.5		36 kVA

Opcional / Optional / En option / Kaufoption / Opzionale / Опционально
*

ALTURAS BAJO GANCHO





Heights under hook / Hauteurs sous crochet / Hakenhöhen / Altezza sotto gancio / Высота под крюком

∅ 3.9 ft



n°	Ref.	∅	h
1	MH121	3.9	9.8
2	MH124-1	3.9	38.7
3	MH124A	3.9	38.7
4	MT123A	3.9	33.1
5	MT123	3.9	33.1

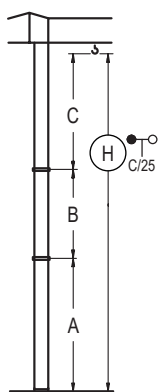
MH124-1 = 4x MH121 - 0.7 ft

	H = H + 0.7 ft
	H = H
	H = H
	H = H - 0.7 ft

Z máx.	En servicio / In operation / En service / In Betrieb / In servizio / При работе	XR2H..... 95 kip XR3H..... 112 kip
	Fuera de servicio / Out of service / Hors service / Ausser Betrieb / Fuori servizio / В стационарном состоянии	XR2H..... 93 kip XR3H... 165 kip

GRÚA ARRIOSTRADA

Braced crane / Grue à entretoisement / Abgespannter Kran / Gru ancorata / Нарастиваемый кран

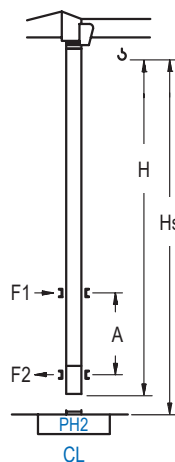


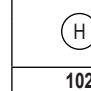
	XA2H		XA3H	
A max	91.5		139.1	
A min	62.7		109.6	
B max	-	59.1	-	59.1
B min	-	39.4	-	39.4
C max	79.1	79.1	79.1	79.1
H max	170.6	229.7	218.2	277.2

	E2		E3	
A max	87.3		134.5	
A min	58.4		105.0	
B max	-	59.1	-	59.1
B min	-	39.4	-	39.4
C max	79.1	79.1	79.1	79.1
H max	166.3	225.4	213.6	272.6

GRÚA TREPADORA

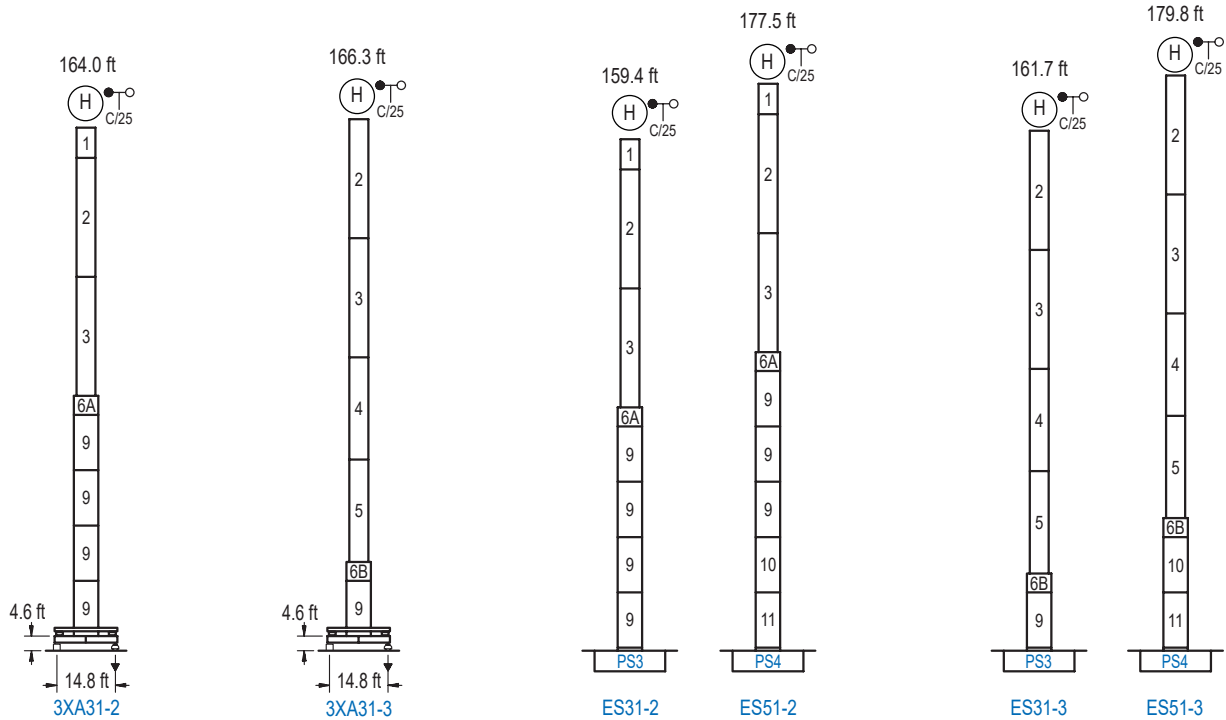
Internal climbing crane / Grue avec cage de télescopage intérieure / Kran mit klettern im Gebäude / Gru in rampante in cavedio / Кран с самоподъемом



	Hs < 980 ft	
	A max (ft)	A min (ft)
102.4 ft 6x MH121 + 4x MT12-3A + CL20A	39.4	19.7
92.5 ft 5x MH121 + 4x MT12-3A + CL20A	32.8	19.7
82.7 ft 4x MH121 + 4x MT12-3A + CL20A	27.9	16.4

Ref.	∅	h
MH121	3.9	9.8
MT12-3A	3.9	9.5
CL20A	3.9	8.5

Otras zonas de viento, alturas superiores, arriostramientos o trepado interno consultar / Other wind zones, additional hook heights, tie frames or internal climbing on request / Autres zones de vent, des hauteurs supplémentaires, entretoisements ou grues avec cage de télescopage intérieure, sur demande / Andere Windzonen, weitere Hakenhöhen, Abspannungen zum Gebäude oder Klettern im Gebäude auf Anfrage / Per zone con velocità del vento particolari, altezze superiori, ancoraggi o rampante in cavedio, consultare il fabbricante / При других ветренных зонах, при большой высоте, привязках к зданию или наращивании крана внутри здания проконсультируйтесь с нами



n°	Ref.	∅	h	n°	Ref.	∅	h	n°	Ref.	∅	h
1	MH121	3.9	3.0	6A	TMS13/PMH12	5.2	3.3	9	S13	5.2	18.0
2	MH124-1	3.9	38.7	6B	TMS13/PMH13	5.2	3.3	10	TS14	5.2	18.0
3	MH124A	3.9	38.7					11	S14	5.2	18.0
4	MT123A	3.9	33.1					12	TS15	5.2	18.0
5	MT123	3.9	33.1					13	S15	5.2	18.0
MH124-1 = 4x MH121 - 0.7 ft								1x S13 = 1x S13M 1x S15 = 1x S15M			

Otras zonas de viento o alturas superiores consultar / Other wind zones or additional hook heights on request / Autres zones de vent ou des hauteurs supplémentaires sur demande / Andere Windzonen oder weitere Hakenhöhen auf Anfrage / Per zone con velocità del vento particolari o altezze superiori consultare il fabbricante / При других ветренных зонах о при большой высоте проконсультируйтесь с нами