

1600 Series

DIAGRAMA DE CARGAS

Load chart / Diagramme de charges / Lastdiagramm / Diagramma di carico / Диаграмма распределения нагрузки

R (ft)	🏗️										🏠																																		
213.3	48.2	59.1	65.6	72.2	85.0	91.2	98.4	105.0	114.8	121.4	131.2	137.8	147.6	154.2	164.0	170.6	180.4	187.0	196.9	203.4	213.3	ft	22,050	17,280	15,210	13,540	11,020	11,020	10,100	9,370	8,440	7,910	7,230	6,810	6,280	5,950	5,510	5,270	4,920	4,700	4,410	4,210	3,970	lb	
196.9	51.5	59.1	65.6	72.2	82.0	91.2	98.4	105.0	114.8	121.4	131.2	137.8	147.6	154.2	164.0	170.6	180.4	187.0	196.9			ft	22,050	18,760	16,530	14,730	12,590	11,020	11,020	10,230	9,240	8,660	7,890	7,470	6,880	6,530	6,060	5,780	5,400	5,160	4,850			lb	
180.4	55.4	59.1	65.6	72.2	82.0	88.6	98.1	106.3	114.8	121.4	131.2	137.8	147.6	154.2	164.0	170.6	180.4					ft	22,050	20,410	18,010	16,070	13,760	12,500	11,020	11,020	10,100	9,480	8,660	8,200	7,560	7,190	6,680	6,370	5,950					lb	
164.0	60.4	65.6	72.2	82.0	88.6	98.4	107.3	117.5	121.4	131.2	137.8	147.6	154.2	164.0									ft	22,050	20,020	17,900	15,340	13,980	12,280	11,020	11,020	10,600	9,700	9,170	8,470	8,050	7,500								lb
147.6	62.3	72.2	82.0	88.6	98.4	105.0	110.6	121.4	131.2	137.8	147.6												ft	22,050	18,520	15,900	14,480	12,740	11,770	11,020	11,020	10,100	9,550	8,820											lb
131.2	64.6	72.2	82.0	88.6	98.4	105.0	114.8	126.6	131.2														ft	22,050	19,330	16,620	15,150	13,340	12,300	11,020	11,020	10,580													lb
114.8	64.6	72.2	82.0	88.6	98.4	105.0	112.8																ft	22,050	19,310	16,580	15,120	13,320	12,300	11,240															lb
98.4	66.3	72.2	82.0	88.6	96.4																		ft	22,050	19,930	17,130	15,630	14,110																	lb

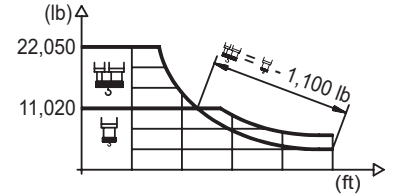
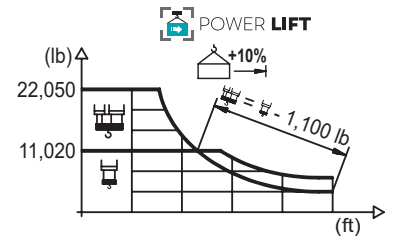


DIAGRAMA DE CARGAS POWERLIFT

Load chart PowerLift / Diagramme de charges PowerLift / Lastdiagramm PowerLift / Diagramma di carico PowerLift / Диаграмма распределения нагрузки PowerLift

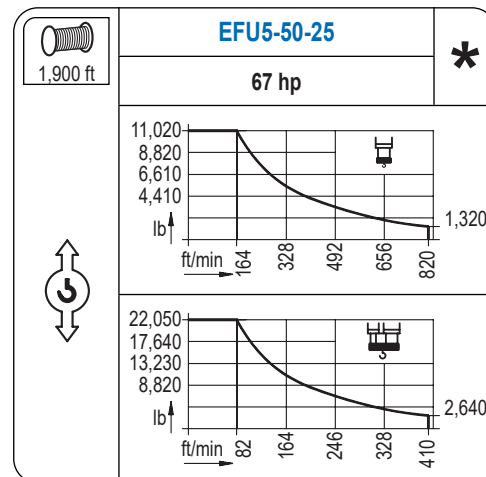
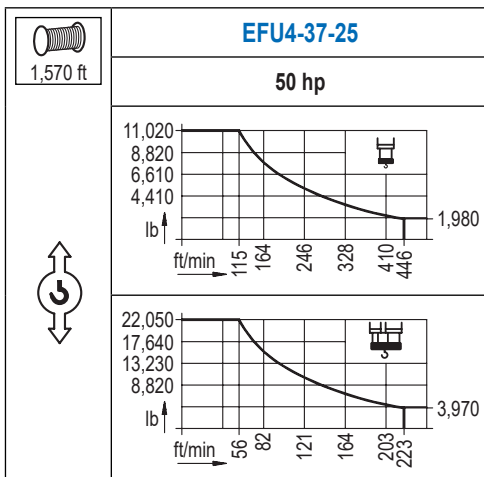
R (ft)	🏗️										🏠																																		
213.3	51.5	59.1	65.6	72.2	82.0	91.2	98.1	105.0	114.8	121.4	131.2	137.8	147.6	154.2	164.0	170.6	180.4	187.0	196.9	203.4	213.3	ft	22,050	18,780	16,530	14,730	12,590	11,020	11,020	10,190	9,190	8,620	7,870	7,430	6,860	6,500	6,040	5,750	5,380	5,140	4,830	4,630	4,370	lb	
196.9	55.4	59.1	65.6	72.2	82.0	88.6	98.1	106.0	114.8	121.4	131.2	137.8	147.6	154.2	164.0	170.6	180.4	187.0	196.9			ft	22,050	20,440	18,030	16,070	13,760	12,520	11,020	11,020	10,080	9,460	8,640	8,160	7,540	7,140	6,660	6,350	5,930	5,690	5,340			lb	
180.4	59.7	65.6	72.2	82.0	88.6	98.4	105.6	115.2	121.4	131.2	137.8	147.6	154.2	164.0	170.6	180.4						ft	22,050	19,690	17,570	15,080	13,730	12,060	11,020	11,020	10,380	9,480	8,970	8,290	7,870	7,320	6,990	6,550						lb	
164.0	65.3	72.2	82.0	88.6	98.4	105.0	116.1	127.3	131.2	137.8	147.6	154.2	164.0										ft	22,050	19,620	16,870	15,390	13,540	12,500	11,020	11,020	10,650	10,080	9,300	8,860	8,250									lb
147.6	67.3	72.2	82.0	88.6	98.4	105.0	114.8	120.1	131.9	137.8	147.6												ft	22,050	20,350	17,500	15,960	14,070	13,010	11,640	11,020	11,020	10,490	9,700											lb
131.2	70.9	82.0	88.6	98.4	105.0	114.8	123.7	131.2															ft	22,050	18,120	16,560	14,590	13,490	12,080	11,020	11,020														lb
114.8	69.6	82.0	88.6	98.4	105.0	112.8																	ft	22,050	18,140	16,580	14,590	13,490	12,370																lb
98.4	71.5	82.0	88.6	96.4																			ft	22,050	18,810	17,150	15,520																		lb



Datos válidos hasta 328 ft de ABG. Para alturas mayores consultar / Valid data up to 328 ft HUH. Additional heights on request / Données valables jusqu'à 328 ft HSC. Pour des autres hauteurs, merci de nous consulter / Gültige Daten bis zu 328 ft HH. Bei höheren Hakenhöhen nachfragen / Dati validi fino a 328 ft ASG. Per altezze superiori consultare Comansa / Допустимые данные до 328 фут ВПК. Для более высоких высот консультируйтесь

MECANISMOS

Mechanisms / Mécanismes / Antriebe / Meccanismi / Механизмы



MECANISMOS

Mechanisms / Mécanismes / Antriebe / Meccanismi / Механизмы

	CFU-7.5
	10 hp
0 ⇔ 308 ft/min	

	GFU-7.5
	2x 10 hp
0 ⇔ 0,7 rpm	

	TRA-7.5
	2x 55 ft·lb
	78 ft/min
	3XR52

	TRA-7.5
	2x 55 ft·lb
	78 ft/min
	5XR72

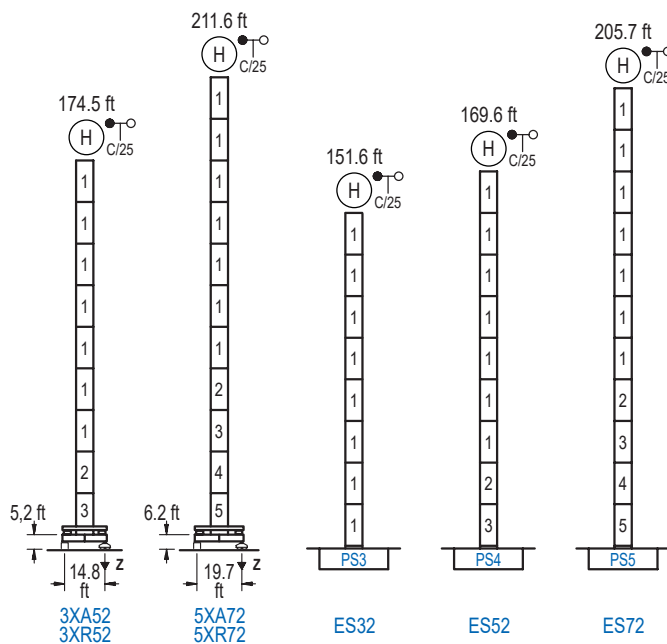
Elevación / Hoist / Levage / Hub / Sollevamento / Тип механизма (подъем)	Carro / Trolley / Chariot / Laufkatze / Carrello / Грузовая тележка	Giro / Slewing / Rotation / Drehbewegung / Rotazione / Поворот	Traslación / Travel / Translation / Verfahrbewegung / Traslazione / Ход	Tensión de alimentación / Operating voltage / Tension de service / Betriebsspannung / Tensione di alimentazione / Напряжение источника питания	Potencia requerida / Required power / Puissance requise / Benötigte Leistung / Potenza richiesta / требуемая мощность
EFU4-37-25	CFU-7.5	(2x) GFU-7.5	(2x) TRA-7.5	480 V	55 kVA
EFU5-50-25				3ph	68 kVA
				60 Hz	

Opcional / Optional / En option / Kaufoption / Opzionale / Опционально
*

ALTURAS BAJO GANCHO

Heights under hook / Hauteurs sous crochet / Hakenhöhen / Altezza sotto gancio / Высота под крюком

∅ 6.6 ft

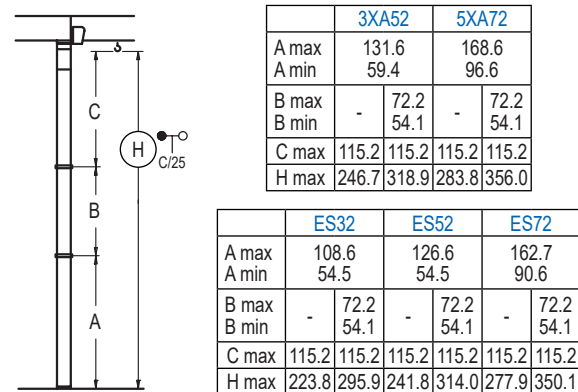


	n°	Ref.	∅	h
	1	S23	6.6	18.0
	2	TS24	6.6	18.0
	3	S24	6.6	18.0
	4	TS25	6.6	18.0
	5	S25	6.6	18.0
	1x S23 = 1x S23M			
	1x S25 = 1x S25M			

Z máx.	En servicio / In operation / En service / In Betrieb / In servizio / При работе	3XR52.. 201 kip 5XR72.. 207 kip
	Fuera de servicio / Out of service / Hors service / Ausser Betrieb / Fuori servizio / В стационарном состоянии	3XR52.. 254 kip 5XR72.. 295 kip

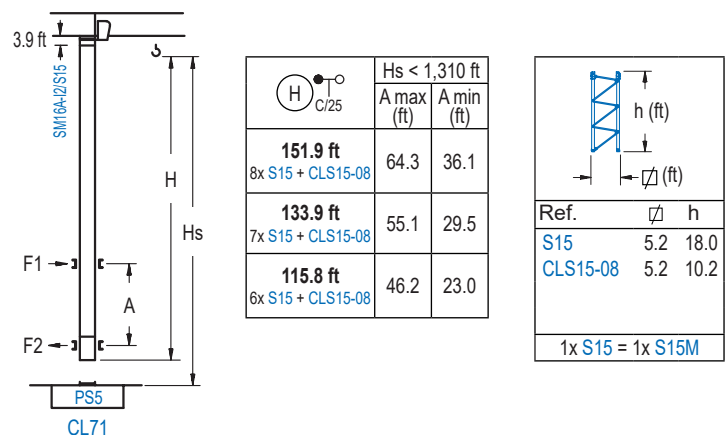
GRÚA ARRIOSTRADA

Braced crane / Grue à entretoisement / Abgespannter Kran / Gru ancorata / Нарастиваемый кран

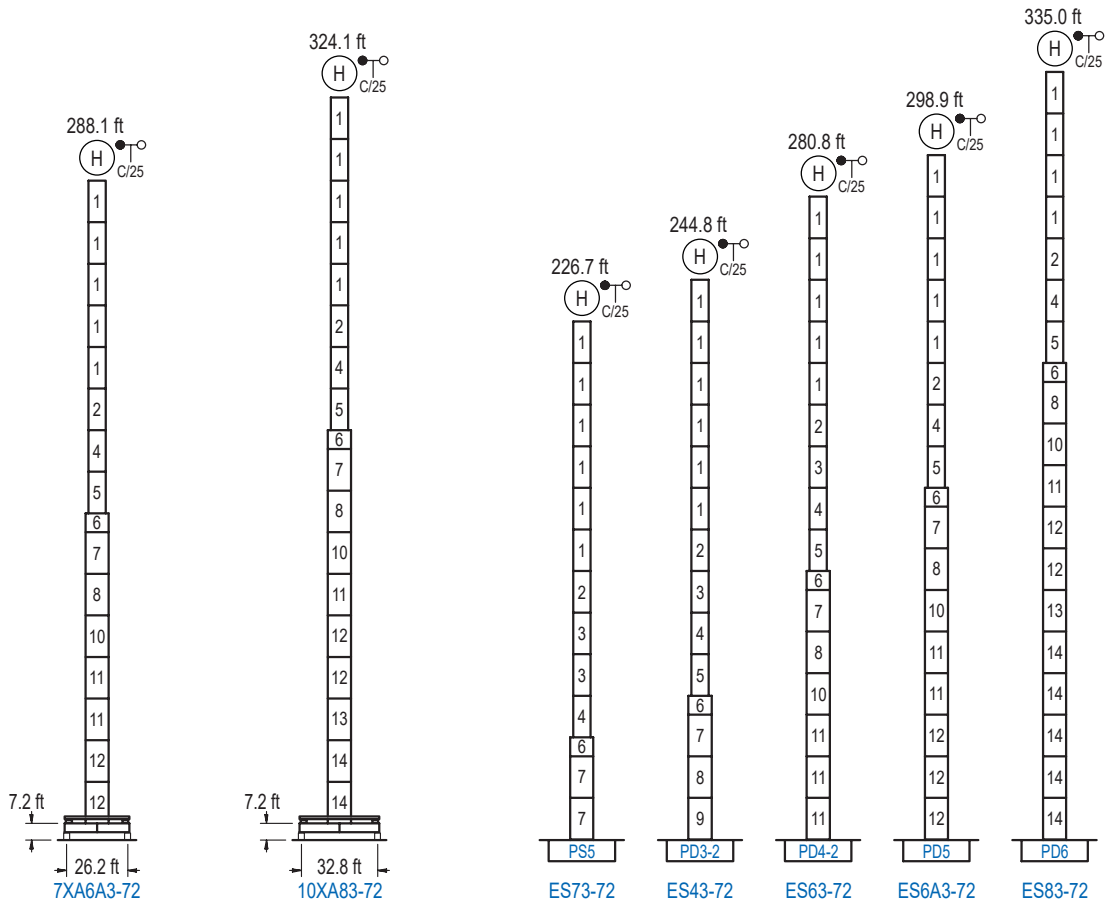


GRÚA TREPADORA

Internal climbing crane / Grue avec cage de télescage intérieure / Kran mit klettern im Gebäude / Gru in rampante in cavedio / Кран с самоподъемом



Otras zonas de viento, alturas superiores, arriostramientos o trepado interno consultar / Other wind zones, additional hook heights, tie frames or internal climbing on request / Autres zones de vent, des hauteurs supplémentaires, entretoisements ou grues avec cage de télescage intérieure, sur demande / Andere Windzonen, weitere Hakenhöhen, Abspannungen zum Gebäude oder Klettern im Gebäude auf Anfrage / Per zone con velocità del vento particolari, altezze superiori, ancoraggi o rampante in cavedio, consultare il fabbricante / При других ветренных зонах, при большой высоте, привязках к зданию или наращивании крана внутри здания проконсультируйтесь с нами



n°	Ref.	∅	h	n°	Ref.	∅	h	n°	Ref.	∅	h	n°	Ref.	∅	h	
																1x S23 = 1x S23M
1	S23	6.6	18.0	4	TS25	6.6	18.0	7	S35	8.2	18.0	11	D34	8.2	18.0	
2	TS24	6.6	18.0	5	S25	6.6	18.0	8	TD33A	8.2	18.0	12	D35	8.2	18.0	
3	S24	6.6	18.0	6	TMS35S25	8.2	3.3	9	D33	8.2	18.0	13	TD36B	8.2	18.0	
									10	TD34	8.2	18.0	14	D36B	8.2	18.0

Otras zonas de viento o alturas superiores consultar / Other wind zones or additional hook heights on request / Autres zones de vent ou des hauteurs supplémentaires sur demande / Andere Windzonen oder weitere Hakenhöhen auf Anfrage / Per zone con velocità del vento particolari o altezze superiori consultare il fabbricante / При других ветренных зонах о при большой высоте проконсультируйтесь с нами



DS.2108.02.IA 04/21 16LC185/DT 22,050 Ib