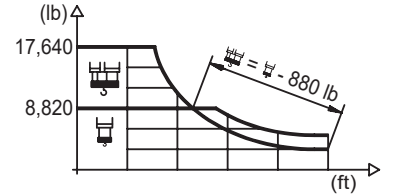


1600 Series

## DIAGRAMA DE CARGAS

Load chart / Diagramme de charges / Lastdiagramm / Diagramma di carico / Диаграмма распределения нагрузки

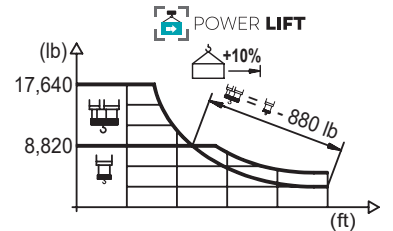
R (ft)	H										L											
213.3	59.4	65.6	72.2	78.7	85.3	91.9	98.4	105.6	114.8	121.4	131.2	137.8	147.6	154.2	164.0	170.6	180.4	187.0	196.9	203.4	213.3	ft
	17,640	15,630	13,980	12,610	11,460	10,470	9,630	8,820	8,820	8,290	7,580	7,190	6,640	6,310	5,860	5,600	5,250	5,030	4,740	4,540	4,300	lb
196.9		63.6	72.2	78.7	85.3	91.9	98.4	105.0	113.5	124.0	131.2	137.8	147.6	154.2	164.0	170.6	180.4	187.0	196.9			ft
		17,640	15,190	13,710	12,480	11,420	10,520	9,720	8,820	8,820	8,270	7,830	7,230	6,880	6,420	6,130	5,730	5,510	5,180			lb
180.4		68.2	72.2	78.7	85.3	91.9	98.4	105.0	114.8	122.4	133.9	137.8	147.6	154.2	164.0	170.6	180.4					ft
		17,640	16,560	14,970	13,620	12,480	11,490	10,630	9,550	8,820	8,820	8,530	7,890	7,520	7,010	6,700	6,280					lb
164.0		74.8	78.7	85.3	91.9	98.4	105.0	114.8	121.4	131.2	134.5		147.6	154.2	164.0							ft
		17,640	16,670	15,190	13,930	12,830	11,900	10,690	9,990	9,080	8,820		8,820	8,400	7,830							lb
147.6			78.1	85.3	91.9	98.4	105.0	114.8	121.4	131.2	140.4		147.6									ft
			17,640	15,940	14,620	13,490	12,500	11,240	10,520	9,570	8,820		8,820									lb
131.2			80.4	85.3	91.9	98.4	105.0	114.8	121.4	129.8												ft
			17,640	16,450	15,100	13,930	12,920	11,620	10,870	10,030												lb
114.8			80.4	85.3	91.9	98.4	105.0	113.4														ft
			17,640	16,450	15,100	13,930	12,920	11,790														lb
98.4			81.7	85.3	91.9	97.0																ft
			17,640	16,750	15,390	14,440																lb



## DIAGRAMA DE CARGAS POWERLIFT

Load chart PowerLift / Diagramme de charges PowerLift / Lastdiagramm PowerLift / Diagramma di carico PowerLift / Диаграмма распределения нагрузки PowerLift

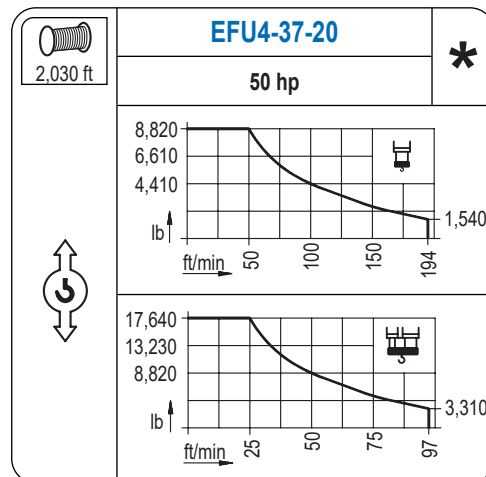
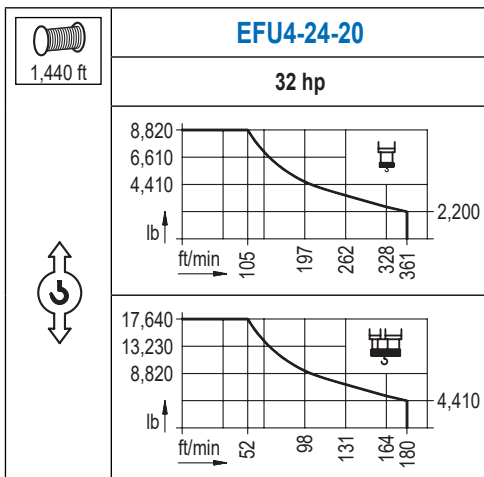
R (ft)	H										L											
213.3	64.0	65.6	72.2	78.7	85.3	91.9	98.4	105.0	114.2	124.3	131.2	137.8	147.6	154.2	164.0	170.6	180.4	187.0	196.9	203.4	213.3	ft
	17,640	17,090	15,280	13,800	12,540	11,490	10,560	9,770	8,820	8,820	8,290	7,850	7,250	6,900	6,440	6,150	5,750	5,510	5,200	5,000	4,720	lb
196.9		68.6	72.2	78.7	85.3	91.9	98.4	105.0	114.8	123.0	134.2	137.8	147.6	154.2	164.0	170.6	180.4	187.0	196.9			ft
		17,640	16,640	15,040	13,690	12,540	11,550	10,690	9,590	8,820	8,820	8,550	7,940	7,540	7,030	6,720	6,310	6,040	5,690			lb
180.4		74.1	78.7	85.3	91.9	98.4	105.0	114.8	121.4	132.9	145.3	147.6	154.2	164.0	170.6	180.4						ft
		17,640	16,420	14,970	13,730	12,650	11,730	10,540	9,850	8,820	8,820	8,660	8,270	7,690	7,360	6,920						lb
164.0		81.4	85.3	91.9	98.4	105.0	114.8	121.4	131.2	137.8	146.3	160.4	164.0									ft
		17,640	16,710	15,340	14,150	13,120	11,820	11,050	10,050	9,480	8,820	8,820	8,600									lb
147.6			84.3	91.9	98.4	105.0	114.8	121.4	131.2	137.8	146.2											ft
			17,640	15,960	14,750	13,670	12,320	11,530	10,490	9,900	9,220											lb
131.2			86.9	91.9	98.4	105.0	114.8	121.4	129.8													ft
			17,640	16,530	15,280	14,180	12,760	11,950	11,020													lb
114.8			86.9	91.9	98.4	105.0	113.4															ft
			17,640	16,580	15,300	14,200	12,960															lb
98.4			88.6	91.9	97.0																	ft
			17,640	16,910	15,870																	lb



Datos válidos hasta 328 ft de ABG. Para alturas mayores consultar / Valid data up to 328 ft HUH. Additional heights on request / Données valables jusqu'à 328 ft HSC. Pour des autres hauteurs, merci de nous consulter / Gültige Daten bis zu 328 ft HH. Bei höheren Hakenhöhen nachfragen / Dati validi fino a 328 ft ASG. Per altezze superiori consultare Comansa / Допустимые данные до 328 фут ВГК. Для более высоких высот консультируйтесь

## MECANISMOS

Mechanisms / Mécanismes / Antriebe / Meccanismi / Механизмы



## MECANISMOS

Mechanisms / Mécanismes / Antriebe / Meccanismi / Механизмы

	<b>CFU-4.0</b>
	5.4 hp
0 ⇔ 262 ft/min	

	<b>GFU-7.5</b>
	2x 10 hp
0 ⇔ 0,7 rpm	

	<b>TRA-7.5</b>
	2x 55 ft·lb
	78 ft/min
	3XR52

	<b>TRA-7.5</b>
	2x 55 ft·lb
	78 ft/min
	5XR72

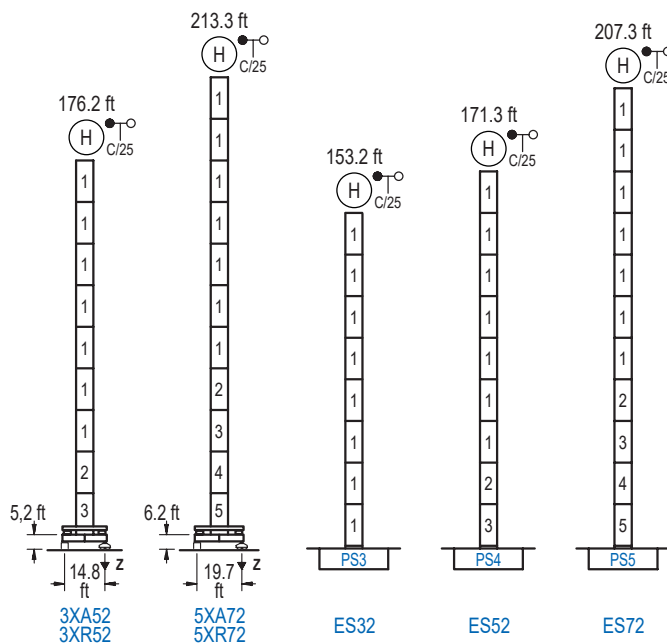
Elevación / Hoist / Levage / Hub / Sollevamento / Тип механизма (подъем)	Carro / Trolley / Chariot / Laufkatze / Carrello / Грузовая тележка	Giro / Slewing / Rotation / Drehbewegung / Rotazione / Поворот	Traslación / Travel / Translation / Verfahrbewegung / Traslazione / Ход	Tensión de alimentación / Operating voltage / Tension de service / Betriebsspannung / Tensione di alimentazione / Напряжение источника питания	Potencia requerida / Required power / Puissance requise / Benötigte Leistung / Potenza richiesta / требуемая мощность
EFU4-24-20	CFU-4.0	(2x) GFU-7.5	(2x) TRA-7.5	480 V	39 kVA
EFU4-37-20				3ph 60 Hz	52 kVA

Opcional / Optional / En option / Kaufoption / Opzionale / Опционально
*

## ALTURAS BAJO GANCHO

Heights under hook / Hauteurs sous crochet / Hakenhöhen / Altezza sotto gancio / Высота под крюком

∅ 6.6 ft

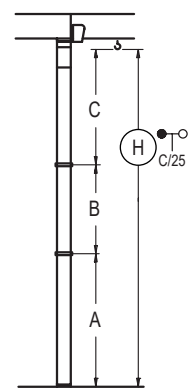


n°	Ref.	∅	h
1	S23	6.6	18.0
2	TS24	6.6	18.0
3	S24	6.6	18.0
4	TS25	6.6	18.0
5	S25	6.6	18.0
1x S23 = 1x S23M			
1x S25 = 1x S25M			

Z máx.	En servicio / In operation / En service / In Betrieb / In servizio / При работе	3XR52.. 198 kip 5XR72.. 205 kip
	Fuera de servicio / Out of service / Hors service / Ausser Betrieb / Fuori servizio / В стационарном состоянии	3XR52.. 258 kip 5XR72.. 298 kip

## GRÚA ARRIOSTRADA

Braced crane / Grue à entretoisement / Abgespannter Kran / Gru ancorata / Нарастиваемый кран

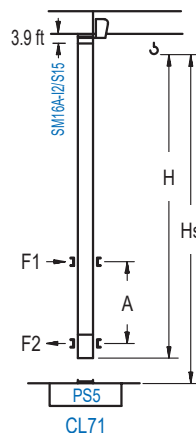


	3XA52	5XA72
A max	131.6	168.6
A min	59.4	96.5
B max	72.2	72.2
B min	54.1	54.1
C max	116.8	116.8
H max	248.4	320.5

	ES32	ES52	ES72
A max	108.6	126.6	162.7
A min	54.1	54.1	90.6
B max	72.2	72.2	72.2
B min	54.1	54.1	54.1
C max	116.8	116.8	116.8
H max	225.4	297.6	315.6

## GRÚA TREPADORA

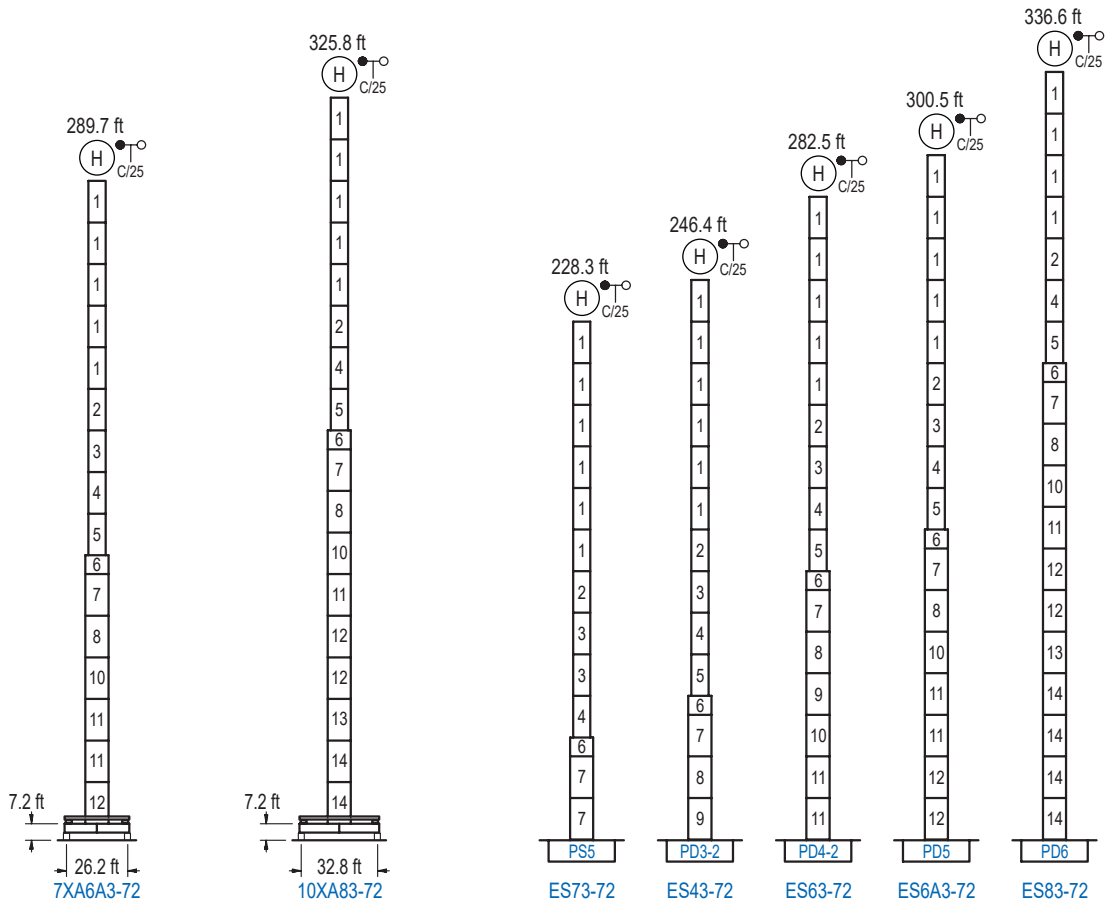
Internal climbing crane / Grue avec cage de télescopage intérieure / Kран mit klettern im Gebäude / Gru in rampante in cavedio / Кран с самоподъемом



	H	C/25	Hs < 1,310 ft	
			A max (ft)	A min (ft)
153.5 ft 8x S15 + CLS15-08			64.3	36.1
135.5 ft 7x S15 + CLS15-08			55.1	29.5
117.5 ft 6x S15 + CLS15-08			46.2	23.0

Ref.	∅	h
S15	5.2	18.0
CLS15-08	5.2	10.2
1x S15 = 1x S15M		

Otras zonas de viento, alturas superiores, arriostramientos o trepado interno consultar / Other wind zones, additional hook heights, tie frames or internal climbing on request / Autres zones de vent, des hauteurs supplémentaires, entretoisements ou grues avec cage de télescopage intérieure, sur demande / Andere Windzonen, weitere Hakenhöhen, Abspannungen zum Gebäude oder Klettern im Gebäude auf Anfrage / Per zone con velocità del vento particolari, altezze superiori, ancoraggi o rampante in cavedio, consultare il fabbricante / При других ветренных зонах, при большой высоте, привязках к зданию или наращивании крана внутри здания проконсультируйтесь с нами



n°	Ref.	∅	h	n°	Ref.	∅	h	n°	Ref.	∅	h	n°	Ref.	∅	h
1	S23	6.6	18.0	4	TS25	6.6	18.0	7	S35	8.2	18.0	11	D34	8.2	18.0
2	TS24	6.6	18.0	5	S25	6.6	18.0	8	TD33A	8.2	18.0	12	D35	8.2	18.0
3	S24	6.6	18.0	6	TMS35S25	8.2	3.3	9	D33	8.2	18.0	13	TD36B	8.2	18.0
								10	TD34	8.2	18.0	14	D36B	8.2	18.0
1x S23 = 1x S23M				1x S25 = 1x S25M				1x S35 = 1x S35M 1x D33 = 1x D33M							

Otras zonas de viento o alturas superiores consultar / Other wind zones or additional hook heights on request / Autres zones de vent ou des hauteurs supplémentaires sur demande / Andere Windzonen oder weitere Hakenhöhen auf Anfrage / Per zone con velocità del vento particolari o altezze superiori consultare il fabbricante / При других ветренных зонах о при большой высоте проконсультируйтесь с нами