

DIAGRAMA DE CARGAS

Load chart / Diagramme de charges / Lastdiagramm / Diagramma di carico / Диаграмма распределения нагрузки

R (ft)	👤					👤																
213.3	48.2	55.8	65.6	72.2	82.0	87.6	98.4	105.0	114.8	121.4	131.2	137.8	147.6	154.2	164.0	170.6	180.4	187.0	196.9	203.4	213.3	ft
	22,050	18,630	15,450	13,820	11,900	11,020	9,590	8,880	7,960	7,450	6,750	6,350	5,820	5,490	5,070	4,810	4,450	4,250	3,950	3,770	3,530	lb
196.9	51.8	55.8	65.6	72.2	82.0	88.6	94.8	105.0	114.8	121.4	131.2	137.8	147.6	154.2	164.0	170.6	180.4	187.0	196.9	ft		
	22,050	20,300	16,870	15,120	13,030	11,020	11,020	9,740	8,750	8,180	7,450	7,010	6,420	6,080	5,620	5,340	4,960	4,720	4,410	lb		
180.4	56.1	65.6	72.2	82.0	88.6	98.4	102.4	114.8	121.4	131.2	137.8	147.6	154.2	164.0	170.6	180.4	ft					
	22,050	18,430	16,530	14,290	13,070	11,550	11,020	9,630	9,020	8,200	7,740	7,100	6,720	6,220	5,930	5,510	lb					
164.0	61.7	72.2	82.0	88.6	98.4	105.0	113.2	121.4	131.2	137.8	147.6	154.2	164.0	ft								
	22,050	18,470	15,980	14,640	12,960	12,040	11,020	10,140	9,260	8,730	8,020	7,610	7,050	lb								
147.6	64.0	72.2	82.0	88.6	98.4	105.0	117.1	121.4	131.2	137.8	147.6	ft										
	22,050	19,200	16,620	15,210	13,490	12,520	11,020	10,580	9,660	9,100	8,380	lb										
131.2	66.6	72.2	82.0	88.6	98.4	105.0	114.8	122.4	131.2	ft												
	22,050	20,130	17,420	15,960	14,150	13,140	11,860	11,020	10,140	lb												
114.8	66.9	72.2	82.0	88.6	98.4	105.0	114.8	ft														
	22,050	20,220	17,500	16,030	14,220	13,210	11,900	lb														
98.4	69.2	82.0	88.6	98.4	ft																	
	22,050	18,170	16,640	14,770	lb																	

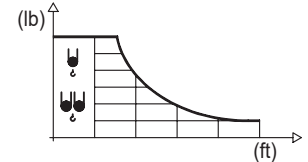
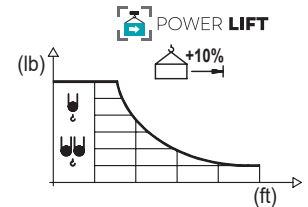


DIAGRAMA DE CARGAS POWERLIFT

Load chart PowerLift / Diagramme de charges PowerLift / Lastdiagramm PowerLift / Diagramma di carico PowerLift / Диаграмма распределения нагрузки PowerLift

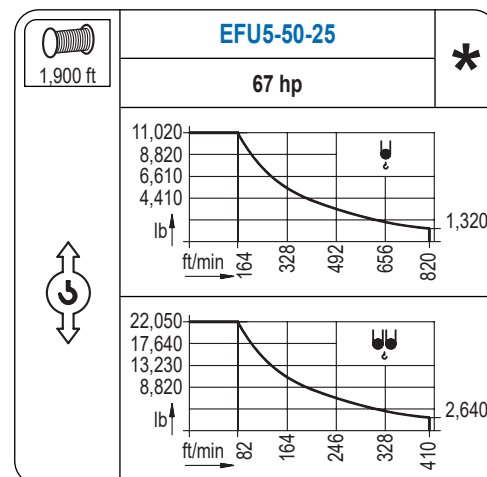
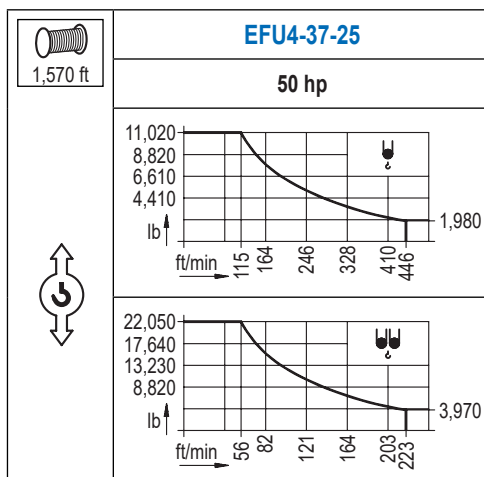
R (ft)	👤					👤																
213.3	51.2	55.8	65.6	72.2	82.0	93.5	98.4	105.0	114.8	121.4	131.2	137.8	147.6	154.2	164.0	170.6	180.4	187.0	196.9	203.4	213.3	ft
	22,050	20,040	16,640	14,900	12,850	11,020	10,380	9,610	8,620	8,070	7,320	6,900	6,330	6,000	5,530	5,250	4,870	4,650	4,340	4,140	3,880	lb
196.9	55.4	65.6	72.2	82.0	88.6	101.4	105.0	114.8	121.4	131.2	137.8	147.6	154.2	164.0	170.6	180.4	187.0	196.9	ft			
	22,050	18,230	16,360	14,110	12,920	11,020	10,580	9,520	8,910	8,110	7,630	7,010	6,640	6,150	5,840	5,450	5,180	4,850	lb			
180.4	60.4	65.6	72.2	82.0	88.6	98.4	110.2	114.8	121.4	131.2	137.8	147.6	154.2	164.0	170.6	180.4	ft					
	22,050	20,020	17,970	15,520	14,220	12,590	11,020	10,520	9,850	8,970	8,470	7,780	7,390	6,830	6,500	6,060	lb					
164.0	66.6	72.2	82.0	88.6	98.4	105.0	114.8	122.0	131.2	137.8	147.6	154.2	164.0	ft								
	22,050	20,130	17,420	15,960	14,150	13,140	11,840	11,020	10,140	9,570	8,820	8,360	7,760	lb								
147.6	68.9	82.0	88.6	98.4	105.0	114.8	121.4	127.0	137.8	147.6	ft											
	22,050	18,140	16,640	14,770	13,710	12,370	11,600	11,020	10,010	9,220	lb											
131.2	72.2	82.0	88.6	98.4	105.0	114.8	121.4	131.2	ft													
	22,050	19,070	17,480	15,520	14,420	13,010	12,210	11,160	lb													
114.8	72.5	82.0	88.6	98.4	105.0	114.8	ft															
	22,050	19,180	17,590	15,610	14,510	13,100	lb															
98.4	75.1	82.0	88.6	98.4	ft																	
	22,050	19,950	18,300	16,250	lb																	



Datos válidos hasta 328 ft de ABG. Para alturas mayores consultar / Valid data up to 328 ft HUH. Additional heights on request / Données valables jusqu'à 328 ft HSC. Pour des autres hauteurs, merci de nous consulter / Gültige Daten bis zu 328 ft HH. Bei höheren Hakenhöhen nachfragen / Dati validi fino a 328 ft ASG. Per altezze superiori consultare Comansa / Допустимые данные до 328 фут ВГК. Для более высоких высот консультируйтесь


MECANISMOS


Mechanisms / Mécanismes / Antriebe / Meccanismi / Механизмы

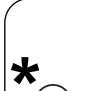


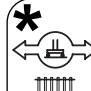
MECANISMOS

Mechanisms / Mécanismes / Antriebe / Meccanismi / Механизмы

	CFU-7.5
	10 hp
0 ⇔ 308 ft/min	

	GFU-7.5
	2x 10 hp
0 ⇔ 0,7 rpm	

	TRA-7.5
	2x 55 ft·lb
	78 ft/min
	3XR52

	TRA-7.5
	2x 55 ft·lb
	78 ft/min
	5XR72

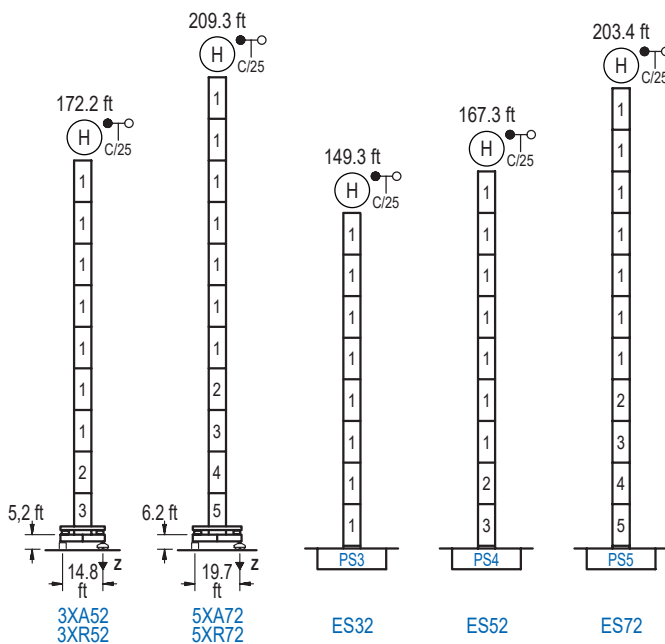
Elevación / Hoist / Levage / Hub / Sollevamento / Тип механизма (подъем)	Carro / Trolley / Chariot / Laufkatze / Carrello / Грузовая тележка	Giro / Slewing / Rotation / Drehbewegung / Rotazione / Поворот	Traslación / Travel / Translation / Verfahrbewegung / Traslazione / Ход	Tensión de alimentación / Operating voltage / Tension de service / Betriebsspannung / Tensione di alimentazione / Напряжение источника питания	Potencia requerida / Required power / Puissance requise / Benötigte Leistung / Potenza richiesta / требуемая мощность
EFU4-37-25	CFU-7.5	(2x) GFU-7.5	(2x) TRA-7.5	480 V	55 kVA
EFU5-50-25				3ph 60 Hz	68 kVA

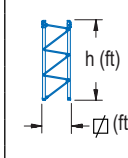
Opcional / Optional / En option / Kaufoption / Opzionale / Опционально
*

ALTURAS BAJO GANCHO

Heights under hook / Hauteurs sous crochet / Hakenhöhen / Altezza sotto gancio / Высота под крюком

∅ 6.6 ft



	n°	Ref.	∅	h
	1	S23	6.6	18.0
	2	TS24	6.6	18.0
	3	S24	6.6	18.0
	4	TS25	6.6	18.0
	5	S25	6.6	18.0
	1x S23 = 1x S23M			
	1x S25 = 1x S25M			

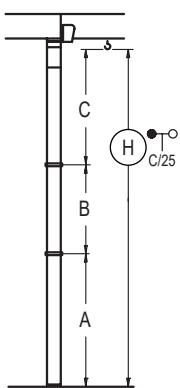
Z máx.	En servicio / In operation / En service / In Betrieb / In servizio / При работе	3XR52.. 201 kip 5XR72.. 207 kip
	Fuera de servicio / Out of service / Hors service / Ausser Betrieb / Fuori servizio / В стационарном состоянии	3XR52.. 254 kip 5XR72.. 295 kip

GRÚA ARRIOSTRADA

Braced crane / Grue à entretoisement / Abgespannter Kran / Gru ancorata / Нарастиваемый кран

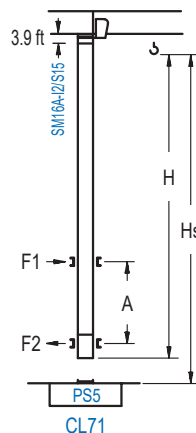
GRÚA TREPADORA

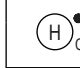
Internal climbing crane / Grue avec cage de télescopage intérieure / Kран mit klettern im Gebäude / Gru in rampante in cavedio / Кран с самоподъемом

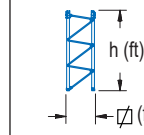


	3XA52	5XA72
A max	131.6	168.6
A min	59.4	96.5
B max	72.2	72.2
B min	54.1	54.1
C max	112.9	112.9
H max	244.4	316.6

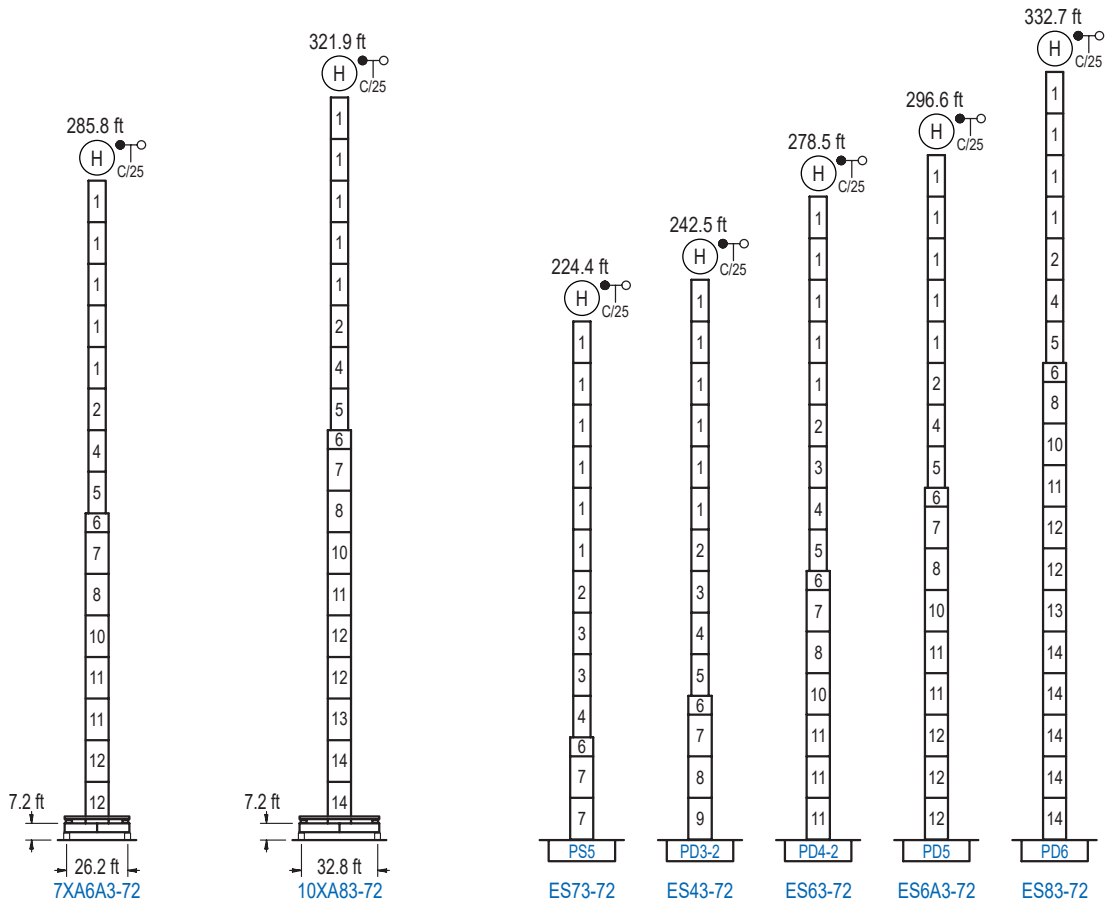
	ES32	ES52	ES72
A max	108.6	126.6	162.7
A min	54.1	54.1	90.6
B max	72.2	72.2	72.2
B min	54.1	54.1	54.1
C max	112.9	112.9	112.9
H max	221.4	293.6	347.8



	Hs < 1,310 ft	
	A max (ft)	A min (ft)
149.6 ft 8x S15 + CLS15-08	64.3	36.1
131.6 ft 7x S15 + CLS15-08	55.1	29.5
131.6 ft 6x S15 + CLS15-08	46.2	23.0

	h (ft)	
	∅ (ft)	
Ref.	∅	h
S15	5.2	18.0
CLS15-08	5.2	10.2
1x S15 = 1x S15M		

Otras zonas de viento, alturas superiores, arriostramientos o trepado interno consultar / Other wind zones, additional hook heights, tie frames or internal climbing on request / Autres zones de vent, des hauteurs supplémentaires, entretoisements ou grues avec cage de télescopage intérieure, sur demande / Andere Windzonen, weitere Hakenhöhen, Abspannungen zum Gebäude oder Klettern im Gebäude auf Anfrage / Per zone con velocità del vento particolari, altezze superiori, ancoraggi o rampante in cavedio, consultare il fabbricante / При других ветренных зонах, при большой высоте, привязках к зданию или наращивании крана внутри здания проконсультируйтесь с нами



n°	Ref.	Ø	h	n°	Ref.	Ø	h	n°	Ref.	Ø	h	n°	Ref.	Ø	h
1	S23	6.6	18.0	4	TS25	6.6	18.0	7	S35	8.2	18.0	11	D34	8.2	18.0
2	TS24	6.6	18.0	5	S25	6.6	18.0	8	TD33A	8.2	18.0	12	D35	8.2	18.0
3	S24	6.6	18.0	6	TMS35S25	8.2	3.3	9	D33	8.2	18.0	13	TD36B	8.2	18.0
								10	TD34	8.2	18.0	14	D36B	8.2	18.0

Otras zonas de viento o alturas superiores consultar / Other wind zones or additional hook heights on request / Autres zones de vent ou des hauteurs supplémentaires sur demande / Andere Windzonen oder weitere Hakenhöhen auf Anfrage / Per zone con velocità del vento particolari o altezze superiori consultare il fabbricante / При других ветренных зонах о при большой высоте проконсультируйтесь с нами