

DIAGRAMA DE CARGAS

Load chart / Diagramme de charges / Lastdiagramm / Diagramma di carico / Диаграмма распределения нагрузки

R (ft)	👤								👤													
213.3	59.4	65.6	72.2	78.7	85.3	91.9	98.4	108.9	114.8	121.4	131.2	137.8	147.6	154.2	164.0	170.6	180.4	187.0	196.9	203.4	213.3	ft
	17,640	15,740	14,130	12,810	11,680	10,740	9,920	8,820	8,290	7,760	7,080	6,680	6,130	5,820	5,400	5,140	4,780	4,590	4,280	4,100	3,860	lb
196.9		64.0	72.2	78.7	85.3	91.9	98.4	105.0	117.8	121.4	131.2	137.8	147.6	154.2	164.0	170.6	180.4	187.0	196.9	ft		
		17,640	15,430	13,980	12,760	11,730	10,850	10,080	8,820	8,510	7,760	7,320	6,750	6,420	5,950	5,670	5,290	5,050	4,740	lb		
180.4		69.2	78.7	85.3	91.9	98.4	105.0	114.8	127.6	131.2	137.8	147.6	154.2	164.0	170.6	180.4	ft					
		17,640	15,280	13,980	12,850	11,880	11,050	9,960	8,820	8,530	8,070	7,430	7,050	6,550	6,260	5,840	lb					
164.0		76.4	85.3	91.9	98.4	105.0	114.8	121.4	131.2	141.1	147.6	154.2	164.0	ft								
		17,640	15,590	14,350	13,270	12,350	11,160	10,470	9,570	8,820	8,360	7,940	7,390	lb								
147.6		80.1	85.3	91.9	98.4	105.0	114.8	121.4	131.2	137.8	147.6	ft										
		17,640	16,400	15,100	13,980	13,010	11,750	11,050	10,100	9,550	8,820	lb										
131.2		82.3	91.9	98.4	105.0	114.8	121.4	131.2	ft													
		17,640	15,650	14,480	13,470	12,190	11,440	10,470	lb													
114.8		82.7	91.9	98.4	105.0	114.8	ft															
		17,640	15,720	14,550	13,540	12,240	lb															
98.4		84.6	91.9	98.4	ft																	
		17,640	16,070	14,880	lb																	

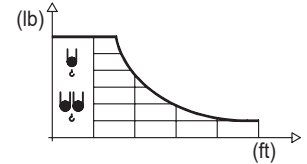
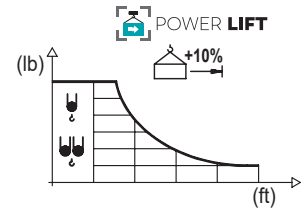


DIAGRAMA DE CARGAS POWERLIFT

Load chart PowerLift / Diagramme de charges PowerLift / Lastdiagramm PowerLift / Diagramma di carico PowerLift / Диаграмма распределения нагрузки PowerLift

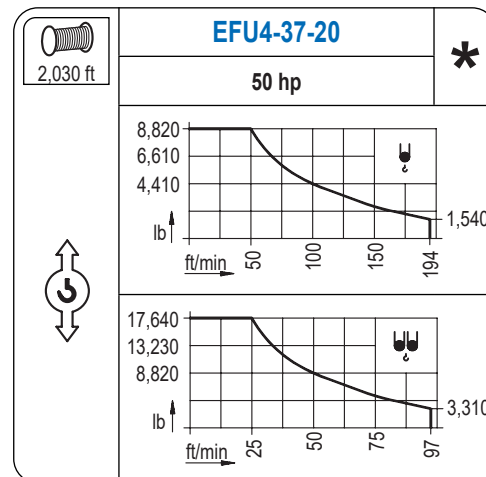
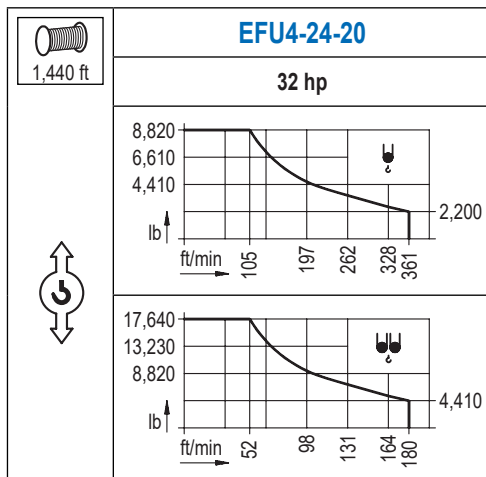
R (ft)	👤								👤												
213.3	63.6	72.2	78.7	85.3	91.9	98.4	105.0	117.1	121.4	131.2	137.8	147.6	154.2	164.0	170.6	180.4	187.0	196.9	203.4	213.3	ft
	17,640	15,320	13,890	12,680	11,640	10,760	10,010	8,820	8,440	7,720	7,280	6,700	6,350	5,910	5,620	5,250	5,030	4,700	4,520	4,230	lb
196.9	68.9	72.2	78.7	85.3	91.9	98.4	105.0	114.8	127.0	131.2	137.8	147.6	154.2	164.0	170.6	180.4	187.0	196.9	ft		
	17,640	16,750	15,190	13,890	12,760	11,820	10,980	9,900	8,820	8,490	8,020	7,390	7,010	6,530	6,220	5,800	5,560	5,200	lb		
180.4	74.8	78.7	85.3	91.9	98.4	105.0	114.8	121.4	131.2	138.1	147.6	154.2	164.0	170.6	180.4	ft					
	17,640	16,670	15,230	14,020	12,960	12,060	10,890	10,230	9,350	8,820	8,160	7,740	7,210	6,880	6,440	lb					
164.0	82.7	91.9	98.4	105.0	114.8	121.4	131.2	137.8	152.9	154.2	164.0	ft									
	17,640	15,700	14,530	13,510	12,210	11,490	10,490	9,940	8,820	8,730	8,110	lb									
147.6	86.6	91.9	98.4	105.0	114.8	121.4	131.2	137.8	147.6	ft											
	17,640	16,530	15,320	14,260	12,900	12,130	11,090	10,490	9,700	lb											
131.2	89.6	98.4	105.0	114.8	121.4	131.2	ft														
	17,640	15,900	14,790	13,380	12,570	11,510	lb														
114.8	90.2	98.4	105.0	114.8	ft																
	17,640	15,980	14,880	13,450	lb																
98.4	92.2	98.4	ft																		
	17,640	16,360	lb																		



Datos válidos hasta 328 ft de ABG. Para alturas mayores consultar / Valid data up to 328 ft HUH. Additional heights on request / Données valables jusqu'à 328 ft HSC. Pour des autres hauteurs, merci de nous consulter / Gültige Daten bis zu 328 ft HH. Bei höheren Hakenhöhen nachfragen / Dati validi fino a 328 ft ASG. Per altezze superiori consultare Comansa / Допустимые данные до 328 фут ВПК. Для более высоких высот консультируйтесь


MECANISMOS


Mechanisms / Mécanismes / Antriebe / Meccanismi / Механизмы

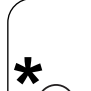


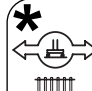
MECANISMOS

Mechanisms / Mécanismes / Antriebe / Meccanismi / Механизмы

	CFU-4.0
	5.4 hp
0 ⇔ 262 ft/min	

	GFU-7.5
	2x 10 hp
0 ⇔ 0,7 rpm	

	TRA-7.5
	2x 55 ft·lb
	78 ft/min
	3XR52

	TRA-7.5
	2x 55 ft·lb
	78 ft/min
	5XR72

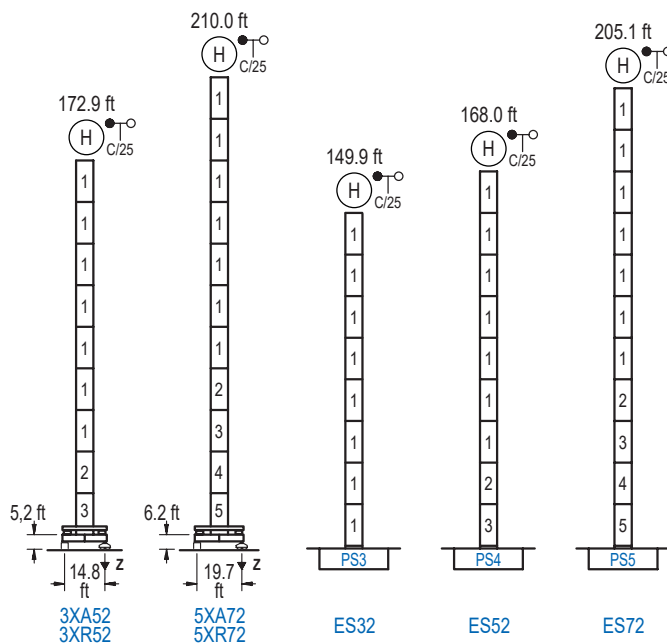
Elevación / Hoist / Levage / Hub / Sollevamento / Тип механизма (подъем)	Carro / Trolley / Chariot / Laufkatze / Carrello / Грузовая тележка	Giro / Slewing / Rotation / Drehbewegung / Rotazione / Поворот	Traslación / Travel / Translation / Verfahrbewegung / Traslazione / Ход	Tensión de alimentación / Operating voltage / Tension de service / Betriebsspannung / Tensione di alimentazione / Напряжение источника питания	Potencia requerida / Required power / Puissance requise / Benötigte Leistung / Potenza richiesta / требуемая мощность
EFU4-24-20	CFU-4.0	(2x) GFU-7.5	(2x) TRA-7.5	480 V 3ph 60 Hz	39 kVA
EFU4-37-20					52 kVA

Opcional / Optional / En option / Kaufoption / Opzionale / Опционально
*

ALTURAS BAJO GANCHO

Heights under hook / Hauteurs sous crochet / Hakenhöhen / Altezza sotto gancio / Высота под крюком

∅ 6.6 ft

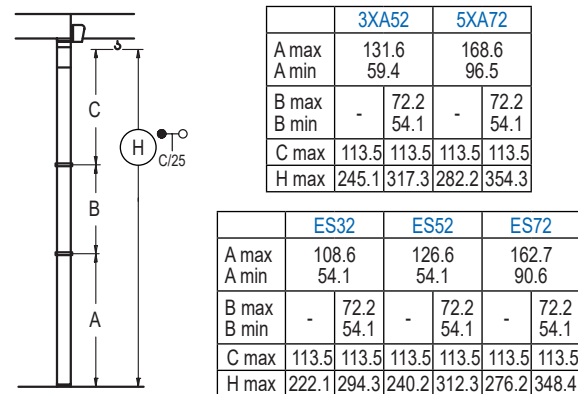


n°	Ref.	∅	h
1	S23	6.6	18.0
2	TS24	6.6	18.0
3	S24	6.6	18.0
4	TS25	6.6	18.0
5	S25	6.6	18.0
1x S23 = 1x S23M			
1x S25 = 1x S25M			

Z máx.	En servicio / In operation / En service / In Betrieb / In servizio / При работе	3XR52.. 198 kip 5XR72.. 205 kip
	Fuera de servicio / Out of service / Hors service / Ausser Betrieb / Fuori servizio / В стационарном состоянии	3XR52.. 258 kip 5XR72.. 298 kip

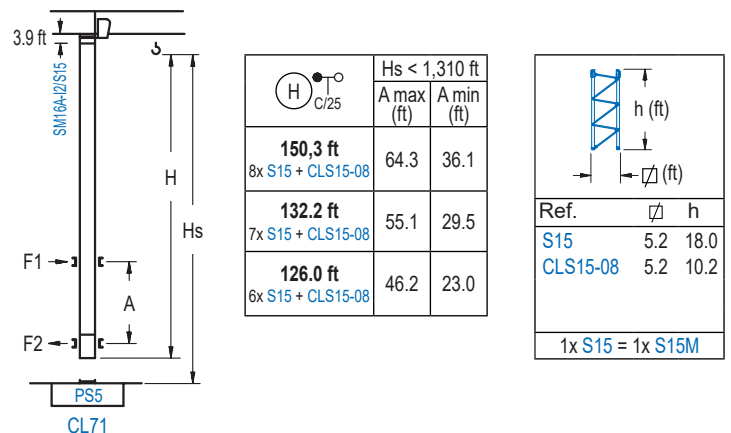
GRÚA ARRIOSTRADA

Braced crane / Grue à entretoisement / Abgespannter Kran / Gru ancorata / Нарастиваемый кран

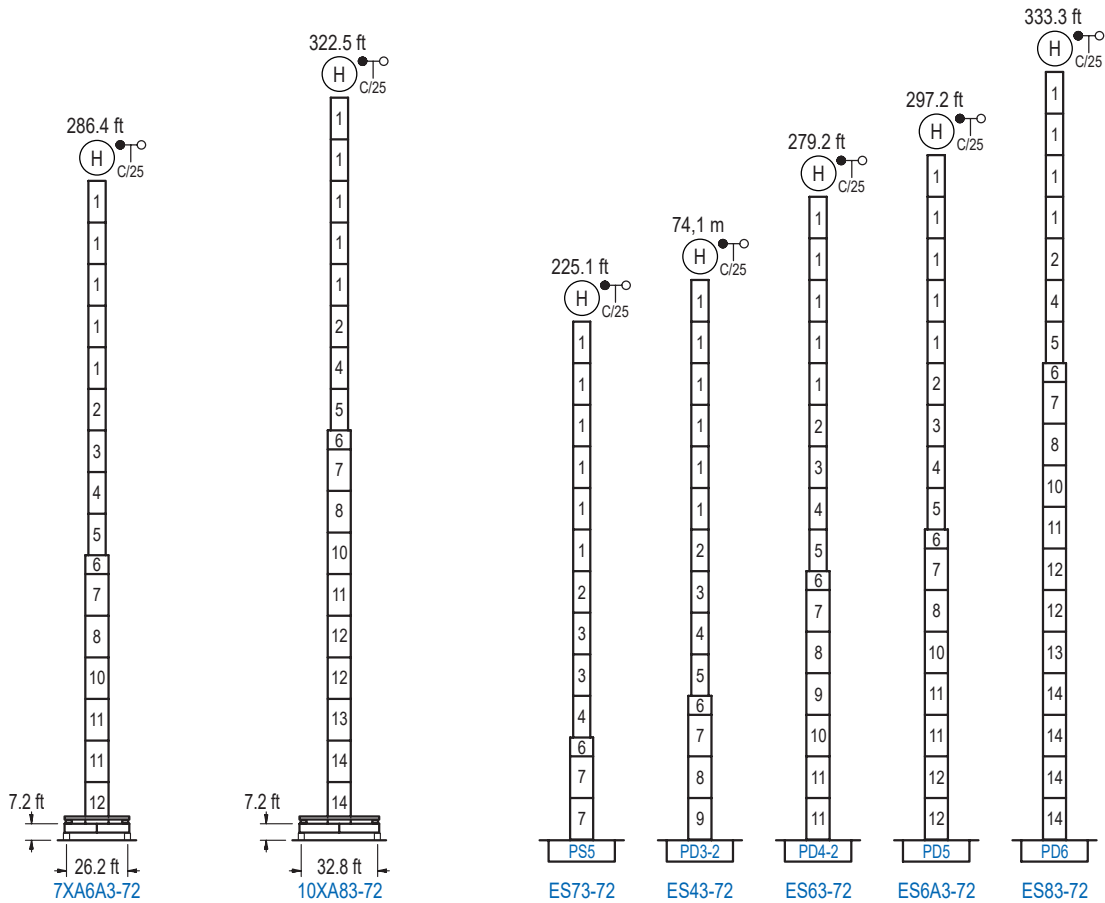


GRÚA TREPADORA

Internal climbing crane / Grue avec cage de télescopage intérieure / Kran mit klettern im Gebäude / Gru in rampante in cavedio / Кран с самоподъемом



Otras zonas de viento, alturas superiores, arriostramientos o trepado interno consultar / Other wind zones, additional hook heights, tie frames or internal climbing on request / Autres zones de vent, des hauteurs supplémentaires, entretoisements ou grues avec cage de télescopage intérieure, sur demande / Andere Windzonen, weitere Hakenhöhen, Abspannungen zum Gebäude oder Klettern im Gebäude auf Anfrage / Per zone con velocità del vento particolari, altezze superiori, ancoraggi o rampante in cavedio, consultare il fabbricante / При других ветренных зонах, при большой высоте, привязках к зданию или наращивании крана внутри здания проконсультируйтесь с нами



n°	Ref.	∅	h	n°	Ref.	∅	h	n°	Ref.	∅	h	n°	Ref.	∅	h
1	S23	6.6	18.0	4	TS25	6.6	18.0	7	S35	8.2	18.0	11	D34	8.2	18.0
2	TS24	6.6	18.0	5	S25	6.6	18.0	8	TD33A	8.2	18.0	12	D35	8.2	18.0
3	S24	6.6	18.0	6	TMS35S25	8.2	3.3	9	D33	8.2	18.0	13	TD36B	8.2	18.0
								10	TD34	8.2	18.0	14	D36B	8.2	18.0
1x S23 = 1x S23M				1x S25 = 1x S25M				1x S35 = 1x S35M 1x D33 = 1x D33M							

Otras zonas de viento o alturas superiores consultar / Other wind zones or additional hook heights on request / Autres zones de vent ou des hauteurs supplémentaires sur demande / Andere Windzonen oder weitere Hakenhöhen auf Anfrage / Per zone con velocità del vento particolari o altezze superiori consultare il fabbricante / При других ветренных зонах о при большой высоте проконсультируйтесь с нами