

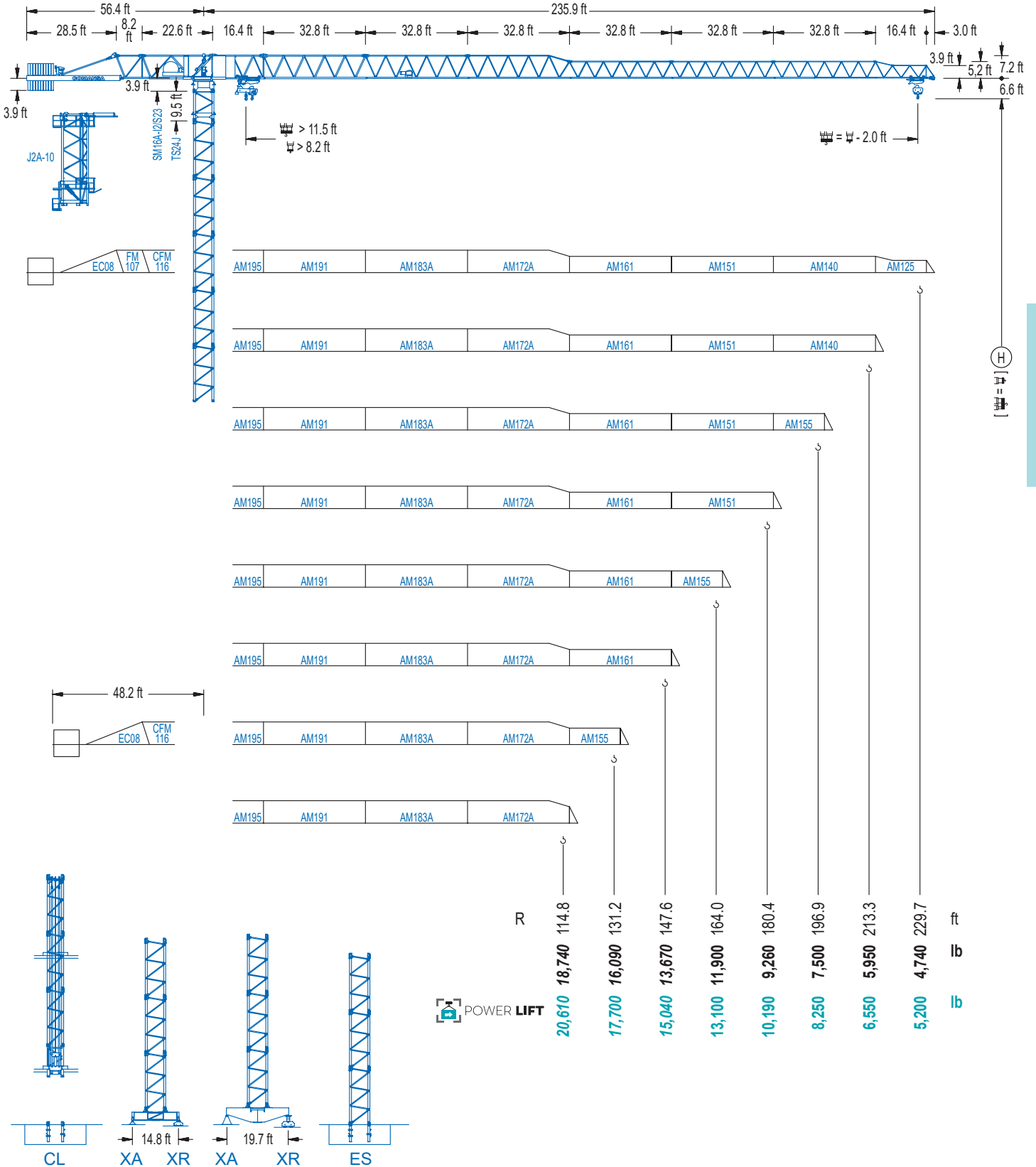


COMANSA

1600 Series

16 LC 260

DT 26,460 lb



1600 Series

CE EN 14439 (C/25)

DIAGRAMA DE CARGAS

Load chart / Diagramme de charges / Lastdiagramm / Diagramma di carico / Диаграмма распределения нагрузки

R (ft)	Icon 1										Icon 2																																			
229.7	50.5	65.6	72.2	82.0	90.2	95.5	105.0	114.8	121.4	131.2	137.8	147.6	154.2	164.0	170.6	180.4	187.0	196.9	203.4	213.3	219.8	229.7	ft	26,460	19,380	17,310	14,840	13,230	13,230	11,900	10,760	10,100	9,240	8,730	8,070	7,670	7,120	6,790	6,370	6,080	5,730	5,510	5,200	5,000	4,740	lb
213.3	55.8	65.6	72.2	82.0	88.6	100.1	106.6	114.8	121.4	131.2	137.8	147.6	154.2	164.0	170.6	180.4	187.0	196.9	203.4	213.3	ft	26,460	21,850	19,530	16,780	15,300	13,230	12,170	11,440	10,470	9,920	9,170	8,710	8,110	7,760	7,250	6,970	6,550	6,310	5,950	lb					
196.9	61.7	72.2	82.0	88.6	98.4	105.0	111.2	119.4	131.2	137.8	147.6	154.2	164.0	170.6	180.4	187.0	196.9	ft	26,460	22,090	19,030	17,370	15,320	14,180	13,230	13,230	11,900	11,270	10,430	9,920	9,260	8,840	8,290	7,960	7,500	lb										
180.4	67.6	72.2	82.0	88.6	98.4	105.0	114.8	121.7	131.6	137.8	147.6	154.2	164.0	170.6	180.4	ft	26,460	24,470	21,120	19,290	17,040	15,780	14,200	13,230	13,230	12,540	11,620	11,070	10,320	9,880	9,260	lb														
164.0	76.1	82.0	88.6	98.4	105.0	114.8	121.4	131.2	137.5	149.3	154.2	164.0	ft	26,460	24,250	22,180	19,640	18,210	16,400	15,340	13,980	13,230	13,230	12,740	11,900	lb																				
147.6	82.7	88.6	98.4	105.0	114.8	121.4	131.2	137.8	145.6	ft	26,460	24,430	21,650	20,110	18,100	16,980	15,480	14,590	13,670	lb																										
131.2	84.0	88.6	98.4	105.0	114.8	121.4	129.2	ft	26,460	24,910	22,090	20,500	18,470	17,330	16,090	lb																														
114.8	83.7	88.6	98.4	105.0	112.8	ft	26,460	24,760	21,940	20,370	18,740	lb																																		

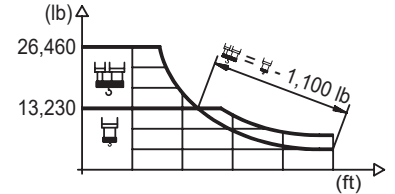
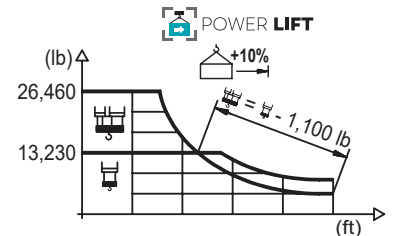


DIAGRAMA DE CARGAS POWERLIFT

Load chart PowerLift / Diagramme de charges PowerLift / Lastdiagramm PowerLift / Diagramma di carico PowerLift / Диаграмма распределения нагрузки PowerLift

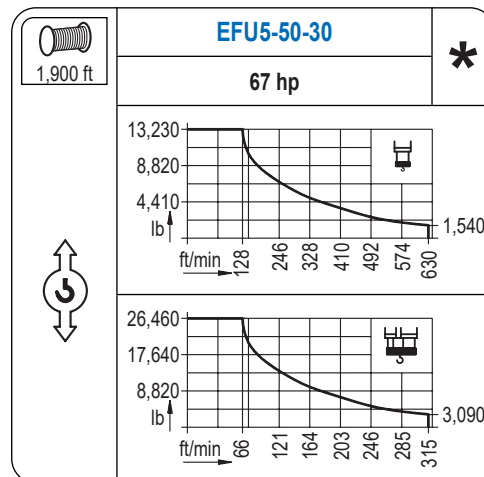
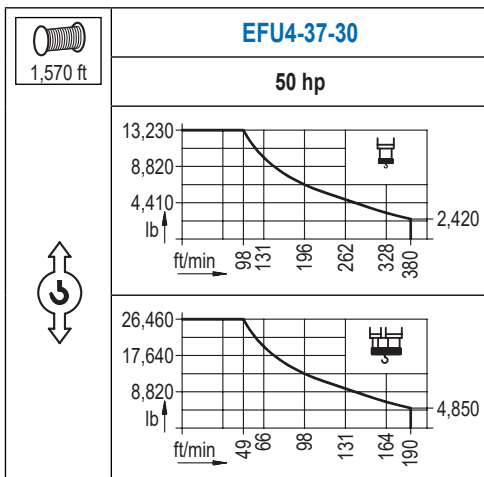
R (ft)	Icon 1										Icon 2																																		
229.7	54.1	65.6	72.2	82.0	88.6	96.8	103.0	114.8	121.4	131.2	137.8	147.6	154.2	164.0	170.6	180.4	187.0	196.9	203.4	213.3	219.8	229.7	ft	26,460	21,100	18,850	16,180	14,750	13,230	11,730	11,000	10,080	9,520	8,800	8,380	7,800	7,450	6,970	6,680	6,280	6,040	5,710	5,510	5,200	lb
213.3	60.0	65.6	72.2	82.0	88.6	98.4	107.9	115.5	121.4	131.2	137.8	147.6	154.2	164.0	170.6	180.4	187.0	196.9	203.4	213.3	ft	26,460	23,830	21,320	18,340	16,750	14,770	13,230	13,230	12,500	11,460	10,850	10,030	9,550	8,880	8,510	7,960	7,650	7,190	6,920	6,550	lb			
196.9	66.6	72.2	82.0	88.6	98.4	105.0	114.8	120.4	129.6	137.8	147.6	154.2	164.0	170.6	180.4	187.0	196.9	ft	26,460	24,160	20,860	19,050	16,840	15,590	14,000	13,230	13,230	12,350	11,440	10,890	10,160	9,700	9,100	8,750	8,250	lb									
180.4	73.2	82.0	88.6	98.4	105.0	114.8	121.4	131.9	142.7	147.6	154.2	164.0	170.6	180.4	ft	26,460	23,170	21,210	18,760	17,390	15,650	14,640	13,230	13,230	12,740	12,150	11,330	10,850	10,190	lb															
164.0	82.7	88.6	98.4	105.0	114.8	121.4	131.2	137.8	149.6	162.7	164.0	ft	26,460	24,400	21,630	20,080	18,100	16,950	15,450	14,590	13,230	13,230	13,100	lb																					
147.6	89.2	98.4	105.0	114.8	121.4	131.2	137.8	145.6	ft	26,460	23,700	22,000	19,840	18,610	17,000	16,050	15,040	lb																											
131.2	91.2	98.4	105.0	114.8	121.4	129.2	ft	26,460	24,210	22,490	20,300	19,030	17,700	lb																															
114.8	90.6	98.4	105.0	112.8	ft	26,460	24,100	22,380	20,610	lb																																			



Datos válidos hasta 328 ft de ABG. Para alturas mayores consultar / Valid data up to 328 ft HUH. Additional heights on request / Données valables jusqu'à 328 ft HSC. Pour des autres hauteurs, merci de nous consulter / Gültige Daten bis zu 328 ft HH. Bei höheren Hakenhöhen nachfragen / Dati validi fino a 328 ft ASG. Per altezze superiori consultare Comansa / Допустимые данные до 328 фут ВГК. Для более высоких высот консультируйтесь


MECANISMOS


Mechanisms / Mécanismes / Antriebe / Meccanismi / Механизмы

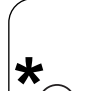


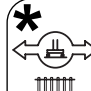
MECANISMOS

Mechanisms / Mécanismes / Antriebe / Meccanismi / Механизмы

	CFU-7.5
	10 hp
0 ⇔ 308 ft/min	

	GFU-7.5
	2x 10 hp
0 ⇔ 0,7 rpm	

	TRA-7.5
	2x 55 ft·lb
	78 ft/min
	3XR52

	TRA-7.5
	2x 55 ft·lb
	78 ft/min
	5XR72

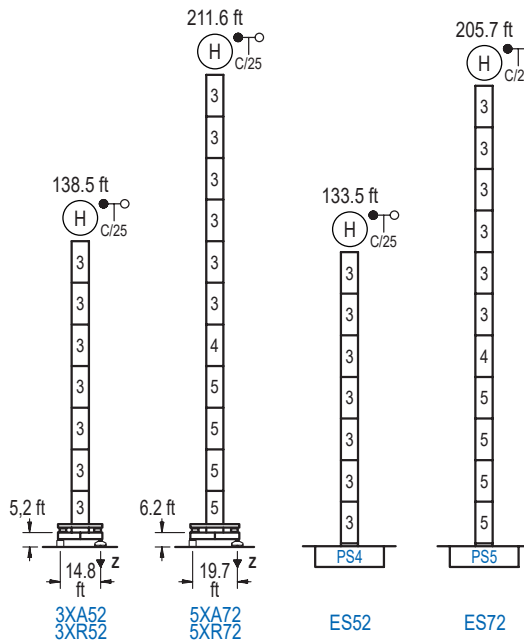
Elevación / Hoist / Levage / Hub / Sollevamento / Тип механизма (подъем)	Carro / Trolley / Chariot / Laufkatze / Carrello / Грузовая тележка	Giro / Slewing / Rotation / Drehbewegung / Rotazione / Поворот	Traslación / Travel / Translation / Verfahrbewegung / Traslazione / Ход	Tensión de alimentación / Operating voltage / Tension de service / Betriebsspannung / Tensione di alimentazione / Напряжение источника питания	Potencia requerida / Required power / Puissance requise / Benötigte Leistung / Potenza richiesta / требуемая мощность
EFU4-37-30	CFU-7.5	(2x) GFU-7.5	(2x) TRA-7.5	480 V 3ph 60 Hz	55 kVA
EFU5-50-30					68 kVA

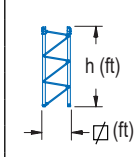
Opcional / Optional / En option / Kaufoption / Opzionale / Опционально
*

ALTURAS BAJO GANCHO

Heights under hook / Hauteurs sous crochet / Hakenhöhen / Altezza sotto gancio / Высота под крюком

∅ 6.6 ft

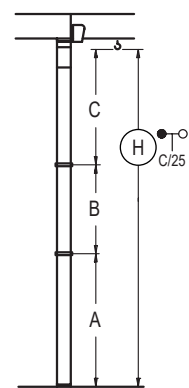


	n°	Ref.	∅	h
	3	S24	6.6	18.0
	4	TS25	6.6	18.0
	5	S25	6.6	18.0
	1x S25 = 1x S25M			

Z máx.	En servicio / In operation / En service / In Betrieb / In servizio / При работе	3XR52.. 220 kip 5XR72.. 231 kip
	Fuera de servicio / Out of service / Hors service / Ausser Betrieb / Fuori servizio / В стационарном состоянии	3XR52.. 165 kip 5XR72.. 300 kip

GRÚA ARRIOSTRADA

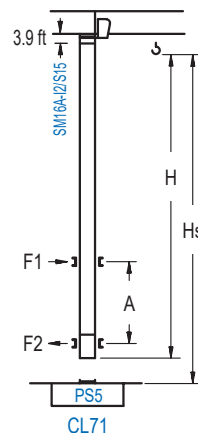
Braced crane / Grue à entretoisement / Abgespannter Kran / Gru ancorata / Нарастиваемый кран

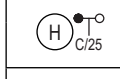


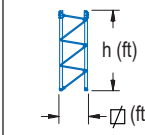
	3XA52	5XA72
A max	95.4	168.6
A min	77.4	96.6
B max	72.2	72.2
B min	54.1	54.1
C max	115.2	115.2
H max	210.6	282.8
	283.8	337.9
	ES52	ES72
A max	90.6	162.7
A min	72.5	90.6
B max	72.2	72.2
B min	54.1	54.1
C max	115.2	115.2
H max	205.7	277.9
	277.9	332.0

GRÚA TREPADORA

Internal climbing crane / Grue avec cage de télescage intérieure / Kran mit klettern im Gebäude / Gru in rampante in cavedio / Кран с самоподъемом

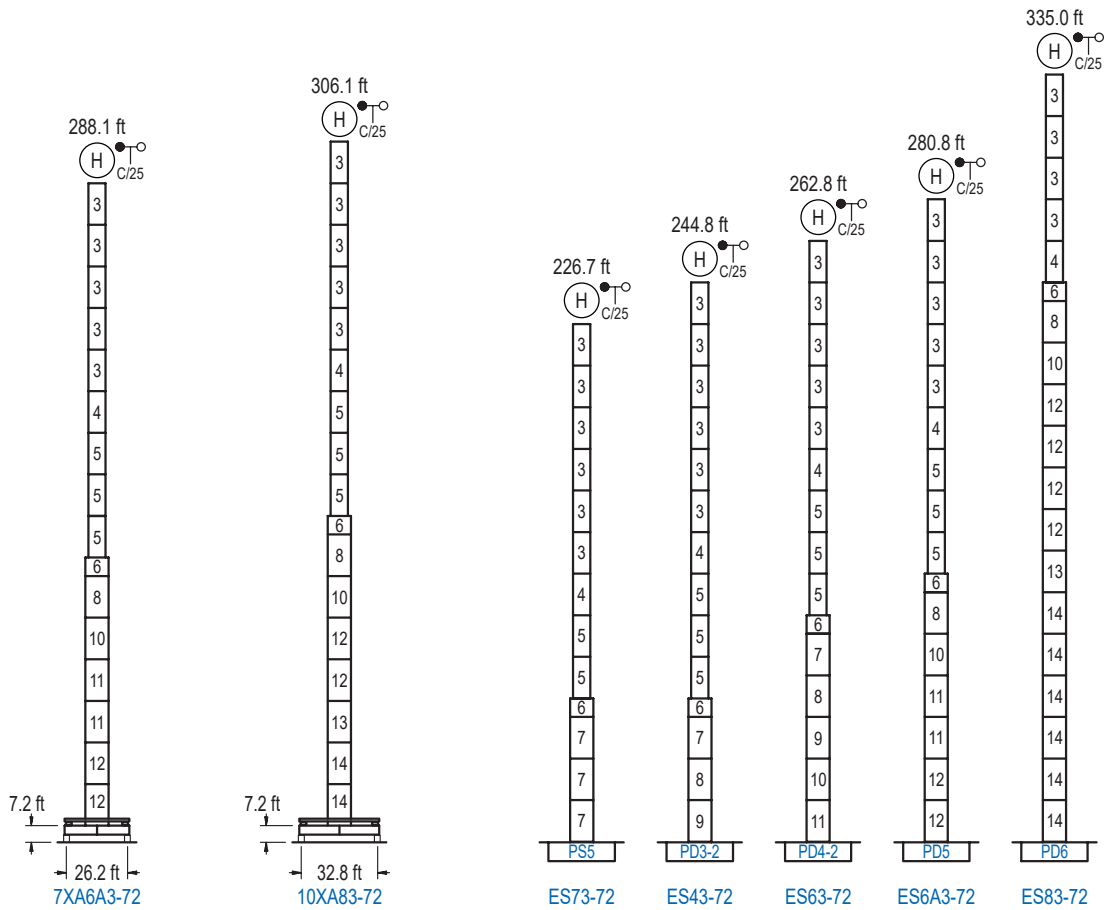


	Hs < 1,310 ft
	A max (ft) A min (ft)
133.9 ft 7x S15 + CLS15-08	64.3 29.5
115.8 ft 6x S15 + CLS15-08	55.1 26.2
97.8 ft 5x S15 + CLS15-08	46.2 26.2

	h (ft)
	∅ (ft)
Ref.	∅ h
S15	5.2 18.0
CLS15-08	5.2 10.2
1x S15 = 1x S15M	

Otras zonas de viento, alturas superiores, arriostramientos o trepado interno consultar / Other wind zones, additional hook heights, tie frames or internal climbing on request / Autres zones de vent, des hauteurs supplémentaires, entretoisements ou grues avec cage de télescage intérieure, sur demande / Andere Windzonen, weitere Hakenhöhen, Abspannungen zum Gebäude oder Klettern im Gebäude auf Anfrage / Per zone con velocità del vento particolari, altezze superiori, ancoraggi o rampante in cavedio, consultare il fabbricante / При других ветренных зонах, при большой высоте, привязках к зданию или наращивании крана внутри здания проконсультируйтесь с нами

1600 Series



n°	Ref.	∅	h	n°	Ref.	∅	h	n°	Ref.	∅	h	n°	Ref.	∅	h
4	TS25	6.6	18.0	7	S35	8.2	18.0	11	D34	8.2	18.0	14	D36B	8.2	18.0
5	S25	6.6	18.0	8	TD33A	8.2	18.0	12	D35	8.2	18.0				
				9	D33	8.2	18.0								
				1x S35 = 1x S35M											
				1x D33 = 1x D33M											
1x S25 = 1x S25M															

Otras zonas de viento o alturas superiores consultar / Other wind zones or additional hook heights on request / Autres zones de vent ou des hauteurs supplémentaires sur demande / Andere Windzonen oder weitere Hakenhöhen auf Anfrage / Per zone con velocità del vento particolari o altezze superiori consultare il fabbricante / При других ветренных зонах о при большой высоте проконсультируйтесь с нами