

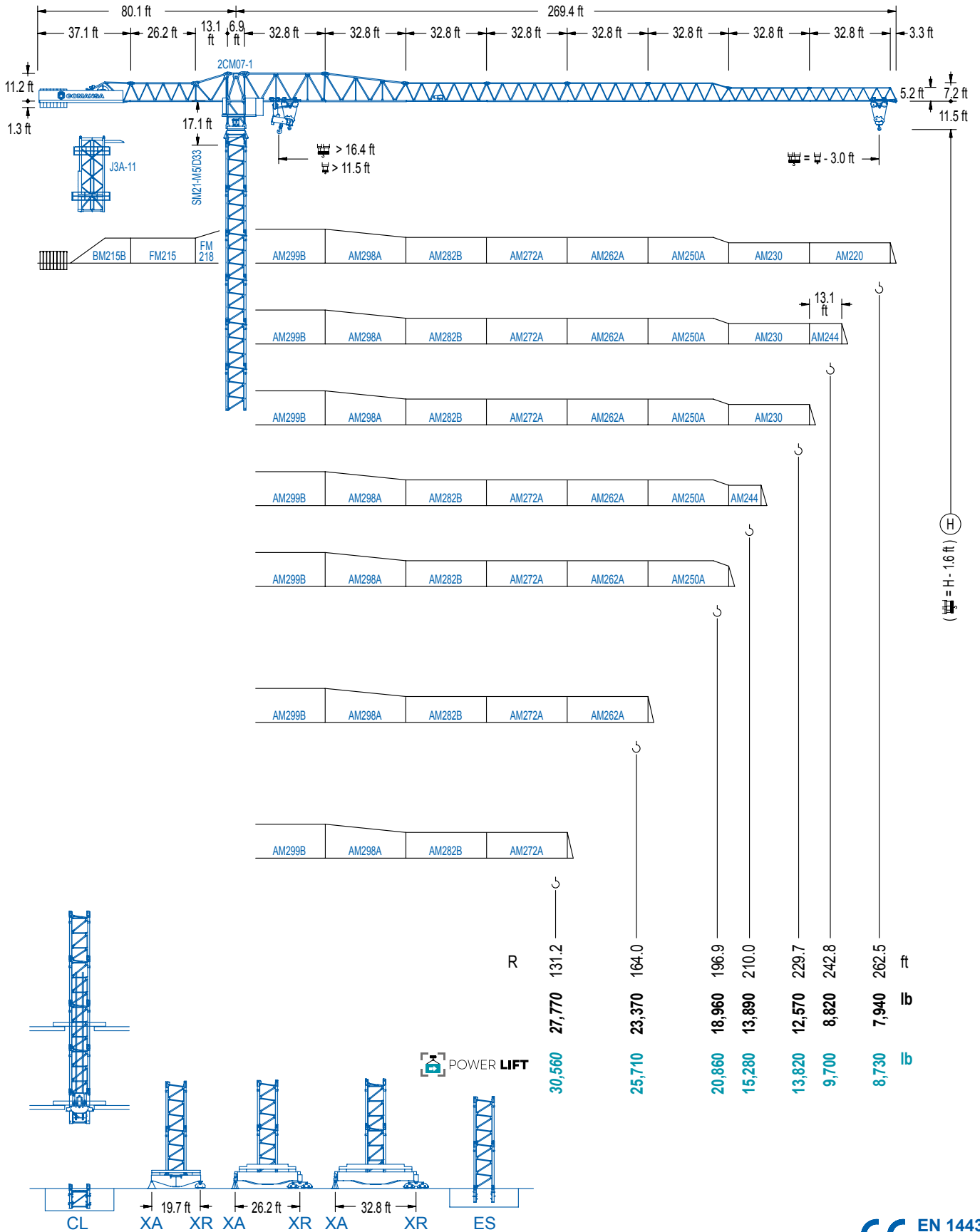


COMANSA

2100 Series

21 LC 550

55,120 lb



2100 Series

CE EN 14439 (C/25)

DIAGRAMA DE CARGAS

Load chart / Diagramme de charges / Lastdiagramm / Diagramma di carico / Диаграмма распределения нагрузки

R (ft)																	
262.5	45.9 55,120	59.1 40,940	65.6 36,110	75.5 30,510	82.0 27,560	90.2 27,560	114.8 21,050	131.2 18,100	147.6 15,830	164.0 14,000	180.4 12,520	196.9 11,290	210.0 10,450	229.7 9,370	242.8 8,750	262.5 7,940	ft lb
242.8	46.3 55,120	59.1 41,180	65.6 36,310	75.5 30,690	82.3 27,560	90.9 27,560	114.8 21,210	131.2 18,230	147.6 15,940	164.0 14,110	180.4 12,610	196.9 11,380	210.0 10,540	229.7 9,440	242.8 8,820	ft lb	
229.7		57.7 55,120	65.6 47,490	75.5 40,340	82.0 36,550	104.0 27,560	114.8 27,560	131.2 23,770	147.6 20,830	164.0 18,500	180.4 16,600	196.9 15,040	210.0 13,960	229.7 12,570	ft lb		
210.0		57.4 55,120	65.6 47,220	75.5 40,100	82.0 36,330	103.3 27,560	114.5 27,560	131.2 23,660	147.6 20,750	164.0 18,430	180.4 16,530	196.9 14,970	210.0 13,890	ft lb			
196.9			70.2 55,120	75.5 50,620	82.0 45,990	98.4 37,210	126.6 27,560	140.4 27,560	147.6 26,100	164.0 23,240	180.4 20,900	196.9 18,960	ft lb				
164.0			70.2 55,120	75.5 50,730	82.0 46,100	98.4 37,280	127.0 27,560	138.1 27,560	147.6 26,260	164.0 23,370	ft lb						
131.2			71.5 55,120	75.5 51,810	82.0 47,070	98.4 38,100	114.8 31,770	128.3 27,780	ft lb								

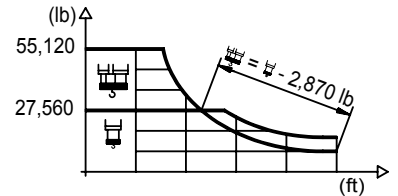
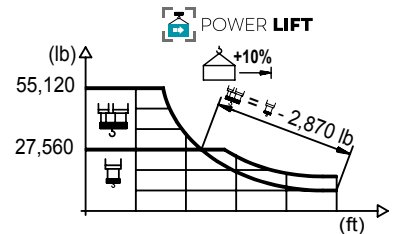


DIAGRAMA DE CARGAS POWERLIFT

Load chart PowerLift / Diagramme de charges PowerLift / Lastdiagramm PowerLift / Diagramma di carico PowerLift / Диаграмма распределения нагрузки PowerLift

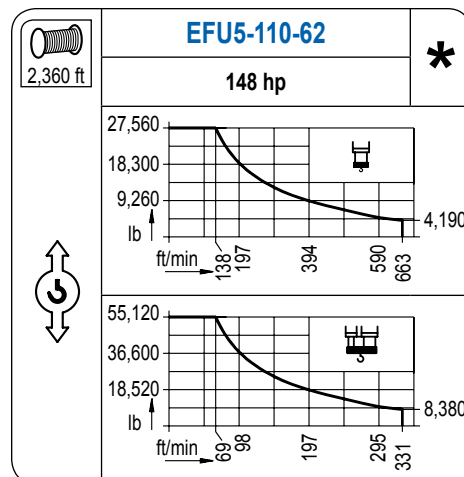
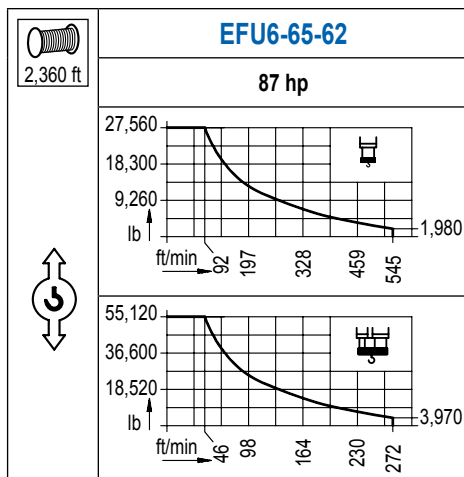
R (ft)																	
262.5	49.2 55,120	59.1 44,600	65.6 39,370	75.5 33,330	88.3 27,560	97.4 27,560	114.8 22,910	131.2 19,710	147.6 17,240	164.0 15,280	180.4 13,690	196.9 12,350	210.0 11,440	229.7 10,270	242.8 9,610	262.5 8,730	ft lb
242.8	49.5 55,120	59.1 44,930	65.6 39,660	75.5 33,580	88.9 27,560	98.1 27,560	114.8 23,100	131.2 19,890	147.6 17,390	164.0 15,410	180.4 13,800	196.9 12,480	210.0 11,550	229.7 10,380	242.8 9,700	ft lb	
229.7			62.3 55,120	75.5 44,250	82.0 40,150	98.4 32,360	112.5 27,560	124.3 27,560	147.6 22,800	164.0 20,280	180.4 18,210	196.9 16,490	210.0 15,320	229.7 13,820	ft lb		
210.0			62.0 55,120	75.5 44,030	82.0 39,950	98.4 32,210	112.2 27,560	124.0 27,560	147.6 22,730	164.0 20,220	180.4 18,170	196.9 16,450	210.0 15,280	ft lb			
196.9				76.1 55,120	82.0 50,600	98.4 41,010	114.8 34,260	137.8 27,560	152.9 27,560	164.0 25,510	180.4 22,970	196.9 20,860	ft lb				
164.0				76.4 55,120	82.0 50,790	98.4 41,180	114.8 34,390	138.5 27,560	153.9 27,560	164.0 25,710	ft lb						
131.2				77.4 55,120	82.0 51,480	98.4 41,760	114.8 34,880	128.3 30,560	ft lb								



2100 Series

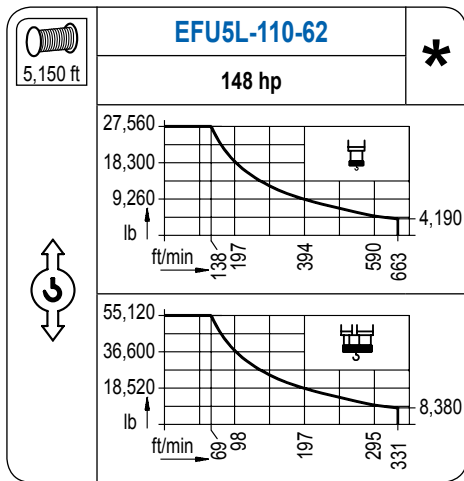
MECANISMOS

Mechanisms / Mécanismes / Antriebe / Meccanismi / Механизмы

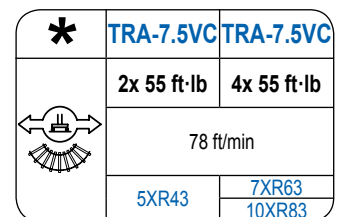
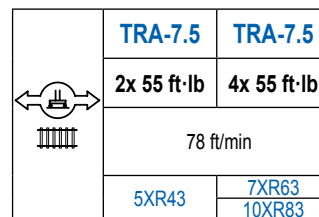
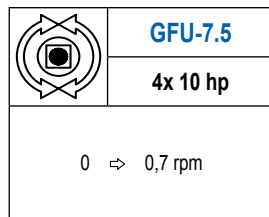
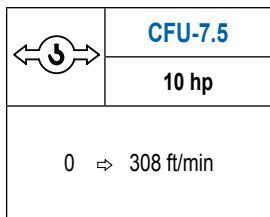


MECANISMOS

Mechanisms / Mécanismes / Antriebe / Meccanismi / Механизмы



Para mecanismos de alta capacidad de cable consultar cargas. / For mechanisms with high drum capacity, request loads. / Pour des mécanismes avec une grande capacité de câble il faut consulter. / Für Hubmechanismen mit hoher Kabelkapazität, Lastdiagramm anfragen. / Gru con tamburo ad alta capacità di avvolgimento fune, consultare il diagramma di carico. / Проконсультируйтесь о нагрузках при механизмах с большей вместимостью кабеля.



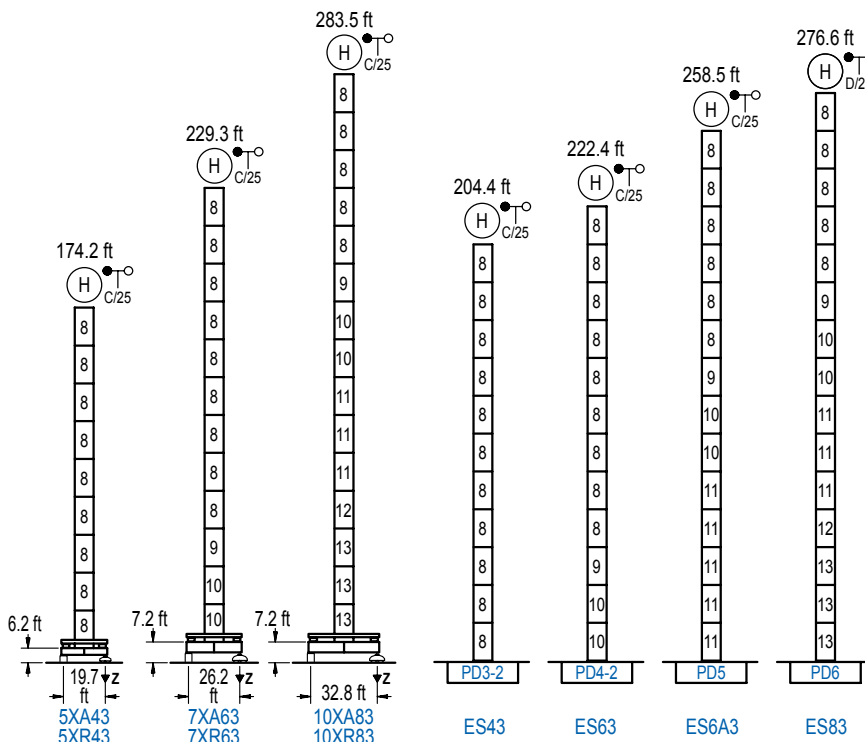
POTENCIA / POWER / PUISSANCE / LEISTUNG / POTENZA / МОЩНОСТЬ				Tensión de alimentación / Operating voltage / Tension de service / Betriebsspannung / Tensione di alimentazione / Напряжение источника питания	Generador / Generator / Générateur / Generator / Generatore / Генератор
Elevación / Hoist / Levage / Hub / Sollevamento / Тип механизма (подъем)	Carro / Trolley / Chariot / Laufkatze / Carrello / Грузовая тележка	Giro / Slewing / Rotation / Drehbewegung / Rotazione / Поворот	Traslación / Travel / Translation / Verfahrbewegung / Traslazione / Ход	480 V 3ph 60 Hz	195 kVA 260 kVA 260 kVA
EFU6-65-62	CFU-7.5	(4x) GFU-7.5	(2x) TRA-7.5		
EFU5-110-62			(4x) TRA-7.5		
EFU5L-110-62					

Opcional / Optional / En option / Kaufoption / Opzionale / Опционально

ALTURAS BAJO GANCHO

Heights under hook / Hauteurs sous crochet / Hakenhöhen / Altezza sotto gancio / Высота под крюком

∅ 8.2 ft



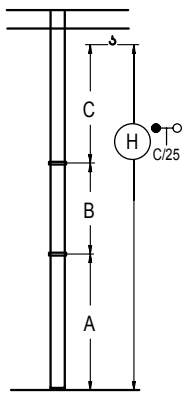
n°	Ref.	∅	h
8	D33	8.2	18.0
9	TD34	8.2	18.0
10	D34	8.2	18.0
11	D35	8.2	18.0
12	TD36B	8.2	18.0
13	D36B	8.2	18.0
1x D33 = 1x D33M			

Z máx.	En servicio / In operation / En service / In Betrieb / In servizio / При работе	5XR43... 300 kip 7XR63... 280 kip 10XR83... 298 kip
	Fuera de servicio / Out of service / Hors service / Ausser Betrieb / Fuori servizio / В стационарном состоянии	5XR43... 225 kip 7XR63... 313 kip 10XR83... 417 kip

Otras zonas de viento o alturas superiores consultar / Other wind zones or additional hook heights on request / Autres zones de vent ou des hauteurs supplémentaires sur demande / Andere Windzonen oder weitere Hakenhöhen auf Anfrage / Per zone con velocità del vento particolari o altezze superiori consultare il fabbricante / При других ветренных зонах о при большой высоте проконсультируйтесь с нами

GRÚA ARRIOSTRADA

Braced crane / Grue à entretoisement / Abgespannter Kran / Gru ancorata / Нарастиваемый кран

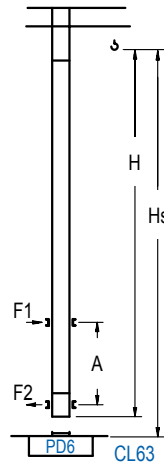


	5XA43	7XA63	10XA83
A max	132.5	187.7	241.8
A min	78.4	79.4	205.7
B max	-	108.3	-
B min	54.1	54.1	54.1
C max	168.0	149.9	149.9
H max	300.5	390.7	337.6

	ES43	ES63	ES6A3	ES83
A max	162.7	180.8	216.9	234.9
A min	72.5	72.5	144.7	198.8
B max	-	108.3	-	108.3
B min	54.1	54.1	54.1	54.1
C max	149.9	149.9	149.9	149.9
H max	312.7	420.9	330.7	439.0

GRÚA TREPADORA

Internal climbing crane / Grue avec cage de télescopage intérieure / Kran mit klettern im Gebäude / Gru in rampante in cavedio / Кран с самоподъемом



H	Hs < 1,310 ft	
	A max (ft)	A min (ft)
198.5 ft 5x D33 + TD34 + 4x D34A + CLD34A-24	71.9	32.8
180.4 ft 4x D33 + TD34 + 4x D34A + CLD34A-24	62.7	26.2
162.4 ft 3x D33 + TD34 + 4x D34A + CLD34A-24	53.8	26.2

n°	Ref.	h
8	D33	8.2
9	TD34	8.2
20	D34A	8.2
21	CLD34A-24	8.2

1x D33 = 1x D33M

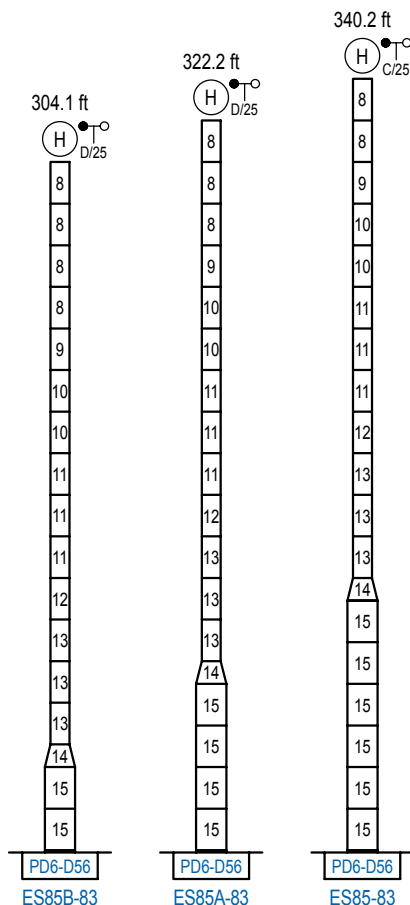
Otras zonas de viento, alturas superiores, arriostramientos o trepado interno consultar / Other wind zones, additional hook heights, tie frames or internal climbing on request / Autres zones de vent, des hauteurs supplémentaires, entretoisements ou grues avec cage de télescopage intérieure, sur demande / Andere Windzonen, weitere Hakenhöhen, Abspannungen zum Gebäude oder Klettern im Gebäude auf Anfrage / Per zone con velocità del vento particolari, altezze superiori, ancoraggi o rampante in cavedio, consultare il fabbricante / При других ветренных зонах, при большой высоте, привязках к зданию или наращивании крана внутри здания проконсультируйтесь с нами

ALTURAS ESPECIALES

Special heights / Spéciaux hauteurs / Extra Höhen / Conformazioni raccordate per altezze speciali / Для специальной высоты

Ø 13.1 ft

2100 Series



n°	Ref.	h
8	D33	8.2
9	TD34	8.2
10	D34	8.2
11	D35	8.2
12	TD36B	8.2
13	D36B	8.2
14	TD56D36	13.1
15	D56	13.1

1x D33 = 1x D33M

Otras zonas de viento o alturas superiores consultar / Other wind zones or additional hook heights on request / Autres zones de vent ou des hauteurs supplémentaires sur demande / Andere Windzonen oder weitere Hakenhöhen auf Anfrage / Per zone con velocità del vento particolari o altezze superiori consultare il fabbricante / При других ветренных зонах о при большой высоте проконсультируйтесь с нами