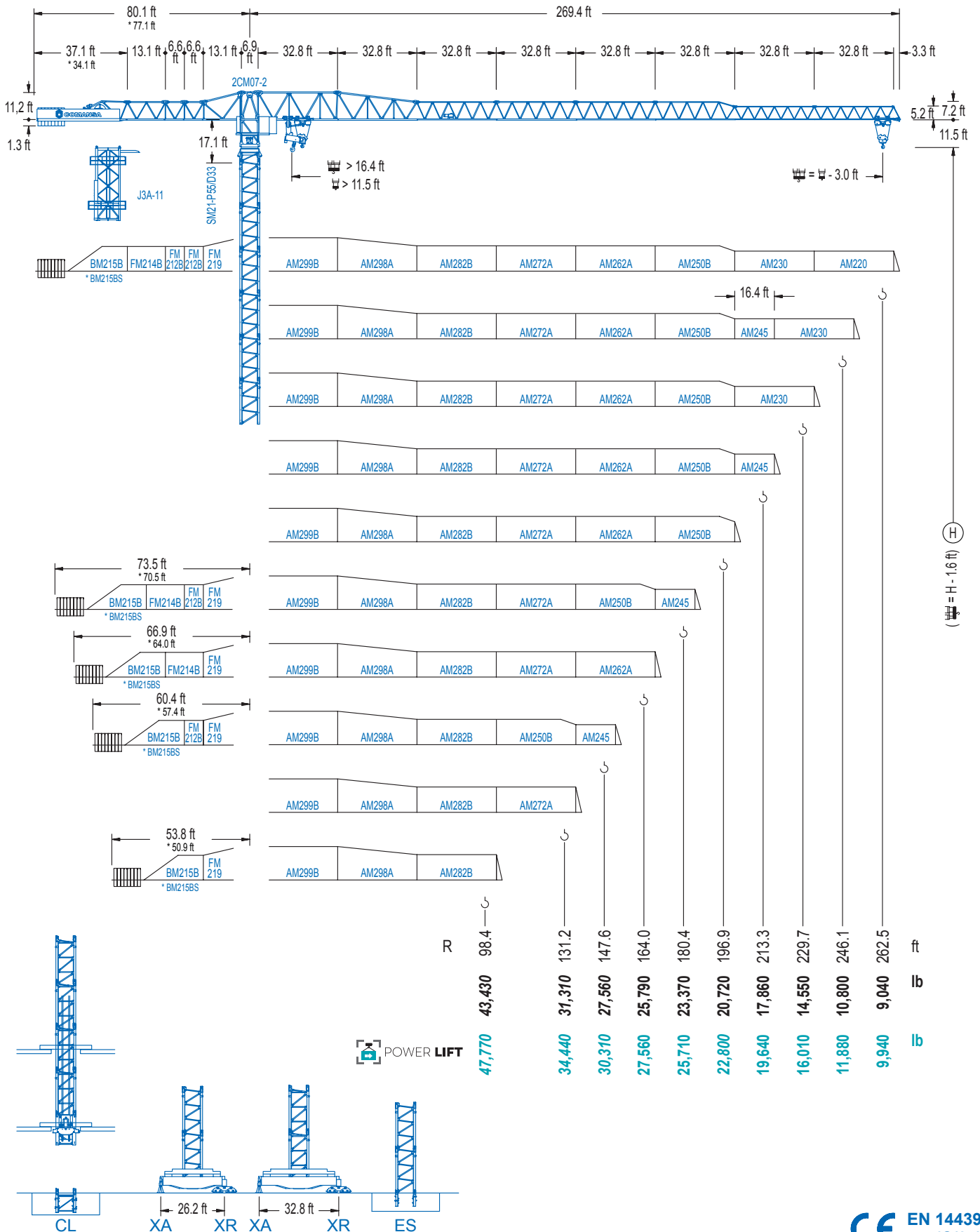


2100 Series

21 LC 600

DT 55,120 lb



2100 Series

DIAGRAMA DE CARGAS

Load chart / Diagramme de charges / Lastdiagramm / Diagramma di carico / Диаграмма распределения нагрузки

R (ft)	H					H											
262.5	50.5	59.1	65.6	75.5	90.9	100.1	114.8	131.2	147.6	164.0	180.4	196.9	213.3	229.7	246.1	262.5	ft
	55,120	46,010	40,650	34,440	27,560	27,560	23,610	20,330	17,790	15,780	14,130	12,760	11,620	10,630	9,790	9,040	lb
246.1		54.8	65.6	75.5	82.0	98.1	108.3	131.2	147.6	164.0	180.4	196.9	213.3	229.7	246.1	ft	
		55,120	44,530	37,790	34,220	27,560	27,560	22,270	19,510	17,330	15,540	14,040	12,790	11,730	10,800	lb	
229.7			65.3	75.5	82.0	98.4	117.5	129.9	147.6	164.0	180.4	196.9	213.3	229.7	ft		
			55,120	46,500	42,200	34,080	27,560	27,560	23,940	21,300	19,140	17,350	15,850	14,550	lb		
213.3				71.9	82.0	98.4	114.8	130.2	144.4	164.0	180.4	196.9	213.3	ft			
				55,120	47,470	38,430	32,050	27,560	27,560	23,940	21,540	19,530	17,860	lb			
196.9					75.8	82.0	98.4	114.8	137.1	152.2	164.0	180.4	196.9	ft			
					55,120	50,260	40,740	34,020	27,560	27,560	25,350	22,820	20,720	lb			
180.4						77.1	82.0	98.4	114.8	139.8	155.2	164.0	180.4	ft			
						55,120	51,390	41,670	34,810	27,560	27,560	25,950	23,370	lb			
164.0							76.4	82.0	98.4	114.8	138.8	154.5	164.0	ft			
							55,120	50,970	41,310	34,520	27,560	27,560	25,790	lb			
147.6								80.1	98.4	114.8	131.2	144.7	164.0	ft			
								55,120	43,410	36,290	31,020	27,560	27,560	lb			
131.2									78.7	98.4	114.8	128.3	ft				
									55,120	42,750	35,740	31,310	lb				
98.4										77.8	82.0	95.5	ft				
										55,120	51,810	43,430	lb				

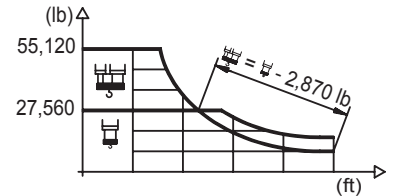
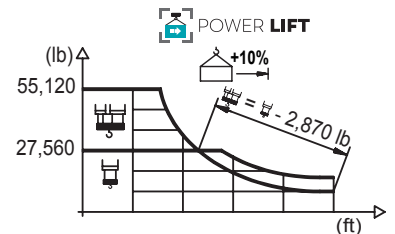


DIAGRAMA DE CARGAS POWERLIFT

Load chart PowerLift / Diagramme de charges PowerLift / Lastdiagramm PowerLift / Diagramma di carico PowerLift / Диаграмма распределения нагрузки PowerLift

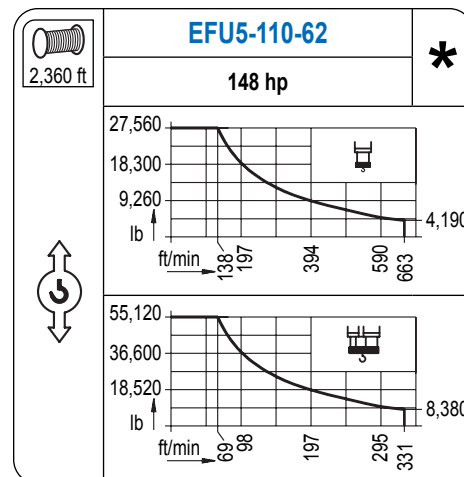
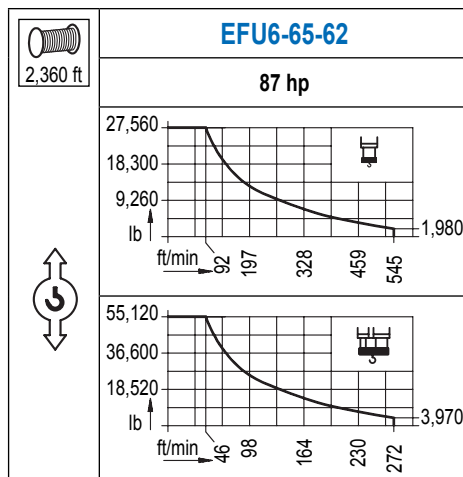
R (ft)	H					H											
262.5	54.5	65.6	75.5	82.0	97.8	107.9	114.8	131.2	147.6	164.0	180.4	196.9	213.3	229.7	246.1	262.5	ft
	55,120	44,380	37,650	34,080	27,560	27,560	25,730	22,180	19,420	17,240	15,450	13,980	12,740	11,660	10,760	9,940	lb
246.1	59.1	65.6	75.5	82.0	91.9	106.3	117.1	131.2	147.6	164.0	180.4	196.9	213.3	229.7	246.1	ft	
	55,120	48,700	41,380	37,520	32,800	27,560	27,560	24,320	21,340	18,960	17,020	15,410	14,040	12,870	11,880	lb	
229.7		70.5	75.5	82.0	91.9	98.4	114.8	127.6	141.1	164.0	180.4	196.9	213.3	229.7	ft		
		55,120	51,010	46,340	40,650	37,500	31,260	27,560	27,560	23,350	21,010	19,050	17,420	16,010	lb		
213.3			78.1	82.0	91.9	98.4	114.8	131.2	141.7	157.2	180.4	196.9	213.3	ft			
			55,120	52,160	45,810	42,310	35,360	30,200	27,560	27,560	23,660	21,470	19,640	lb			
196.9				82.3	91.9	98.4	114.8	131.2	149.3	165.7	180.4	196.9	ft				
				55,120	48,590	44,910	37,570	32,120	27,560	27,560	25,090	22,800	lb				
180.4					84.0	91.9	98.4	114.8	131.2	152.2	169.3	180.4	ft				
					55,120	49,740	45,970	38,470	32,910	27,560	27,560	25,710	lb				
164.0						82.7	91.9	98.4	114.8	131.2	149.9	164.0	ft				
						55,120	48,830	45,130	37,760	32,300	27,560	27,560	lb				
147.6							86.3	91.9	98.4	114.8	131.2	144.7	ft				
							55,120	51,390	47,510	39,790	34,060	30,310	lb				
131.2								85.3	91.9	98.4	114.8	128.3	ft				
								55,120	50,710	46,870	39,240	34,440	lb				
98.4									84.3	91.9	95.5	ft					
									55,120	50,020	47,770	lb					



Datos válidos hasta 328 ft de ABG. Para alturas mayores consultar / Valid data up to 328 ft HUH. Additional heights on request / Données valables jusqu'à 328 ft HSC. Pour des autres hauteurs, merci de nous consulter / Gültige Daten bis zu 328 ft HH. Bei höheren Hakenhöhen nachfragen / Dati validi fino a 328 ft ASG. Per altezze superiori consultare Comansa / Допустимые данные до 328 фут ВПК. Для более высоких высот консультируйтесь

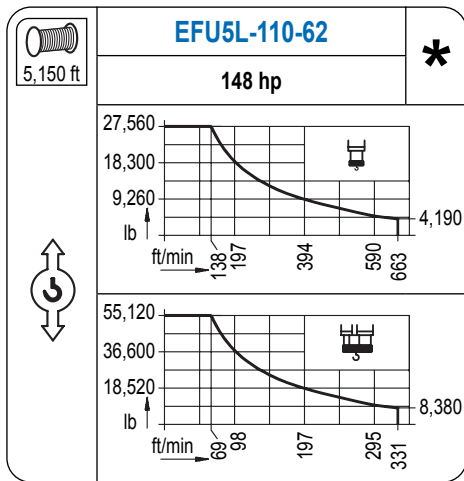
MECANISMOS

Mechanisms / Mécanismes / Antriebe / Meccanismi / Механизмы

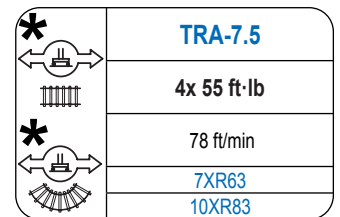
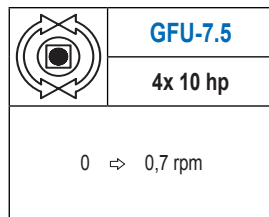
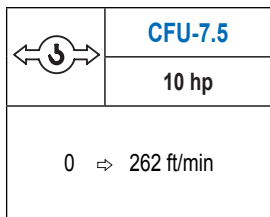


MECANISMOS

Mechanisms / Mécanismes / Antriebe / Meccanismi / Механизмы



Para mecanismos de alta capacidad de cable consultar cargas. / For mechanisms with high drum capacity, request loads. / Pour des mécanismes avec une grande capacité de câble il faut consulter. / Für Hubmechanismen mit hoher Kabelkapazität, Lastdiagramm anfragen. / Gru con tamburo ad alta capacità di avvolgimento fune, consultare il diagramma di carico. / Проконсультируйтесь о нагрузках при механизмах с большей вместимостью кабеля.



Elevación / Hoist / Levage / Hub / Sollevamento / Тип механизма (подъем)	Carro / Trolley / Chariot / Laufkatze / Carrello / Грузовая тележка	Giro / Slewing / Rotation / Drehbewegung / Rotazione / Поворот	Traslación / Travel / Translation / Verfahrbewegung / Traslazione / Ход	Tensión de alimentación / Operating voltage / Tension de service / Betriebsspannung / Tensione di alimentazione / Напряжение источника питания	Potencia requerida / Required power / Puissance requise / Benötigte Leistung / Potenza richiesta / требуемая мощность
EFU6-65-62	CFU-7.5	(4x) GFU-7.5	(4x) TRA-7.5	480 V	95 kVA
EFU5-110-62				3 ph	140 kVA
EFU5L-110-62				60 Hz	140 kVA

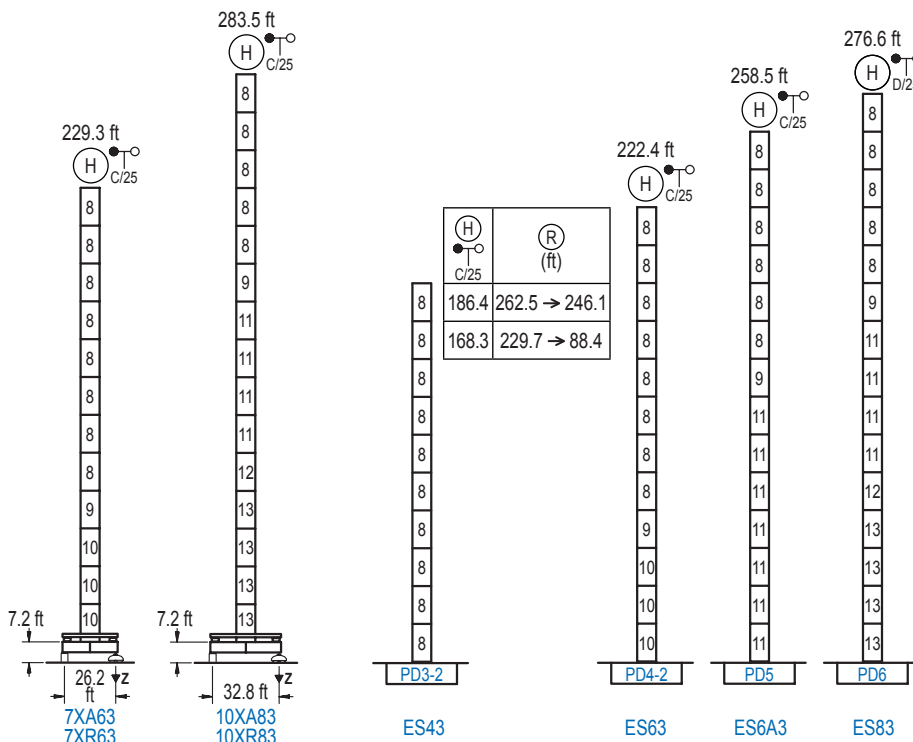
Optional /
Optional / En
option / Kaufoption
/ Opzionale /
Опционально

*

ALTURAS BAJO GANCHO

Heights under hook / Hauteurs sous crochet / Hakenhöhen / Altezza sotto gancio / Высота под крюком

∅ 2,5 m



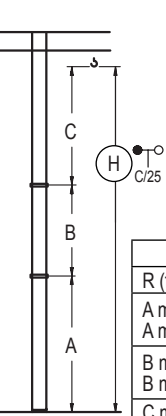
n°	Ref.	∅	h
8	D33	8.2	18.0
9	TD34	8.2	18.0
10	D34	8.2	18.0
11	D35	8.2	18.0
12	TD36B	8.2	18.0
13	D36B	8.2	18.0
1x D33 = 1x D33M			

Z máx.	En servicio / In operation / En service / In Betrieb / In servizio / При работе	7XR63...295 kip 10XR83...309 kip
	Fuera de servicio / Out of service / Hors service / Ausser Betrieb / Fuori servizio / В стационарном состоянии	7XR63...295 kip 10XR83...410 kip

Otras zonas de viento o alturas superiores consultar / Other wind zones or additional hook heights on request / Autres zones de vent ou des hauteurs supplémentaires sur demande / Andere Windzonen oder weitere Hakenhöhen auf Anfrage / Per zone con velocità del vento particolari o altezze superiori consultare il fabbricante / При других ветренных зонах о при большой высоте проконсультируйтесь с нами

GRÚA ARRIOSTRADA

Braced crane / Grue à entretoisement / Abgespannter Kran / Gru ancorata / Нарастиваемый кран

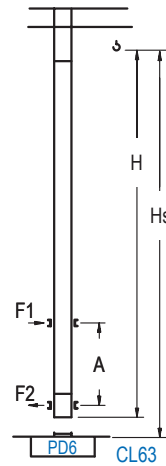


	7XA63		10XA83	
R (ft)	262.5 > 88.4		262.5 > 88.4	
A max	187.7		241.8	
A min	97.4		169.6	
B max	-	90.2	-	90.2
B min	-	72.2	-	72.2
C max	131.9	131.9	131.9	131.9
H max	319.6	409.8	373.7	463.9

	ES43		ES63		ES6A3		ES83	
R (ft)	262.5 > 246.1		229.7 > 88.4		262.5 > 88.4		262.5 > 88.4	
A max	144.7		126.6		180.7		216.9	
A min	72.5		72.5		90.6		144.7	
B max	-	108.3	-	108.3	-	90.2	-	90.2
B min	-	72.2	-	72.2	-	72.2	-	72.2
C max	149.9	131.9	149.9	131.9	131.9	131.9	131.9	131.9
H max	294.6	384.8	276.6	366.8	312.7	402.9	348.8	439.0

GRÚA TREPADORA

Internal climbing crane / Grue avec cage de télescopage intérieure / Kran mit Klettern im Gebäude / Gru in rampante in cavedio / Кран с самоподъемом



H C/25	Hs < 1,310 ft	
	A max (ft)	A min (ft)
198.5 ft 5x D33 + TD34 + 4x D34A + CLD34A-24	71.9	32.8
180.4 ft 4x D33 + TD34 + 4x D34A + CLD34A-24	62.7	26.2
162.4 ft 3x D33 + TD34 + 4x D34A + CLD34A-24	53.8	26.2

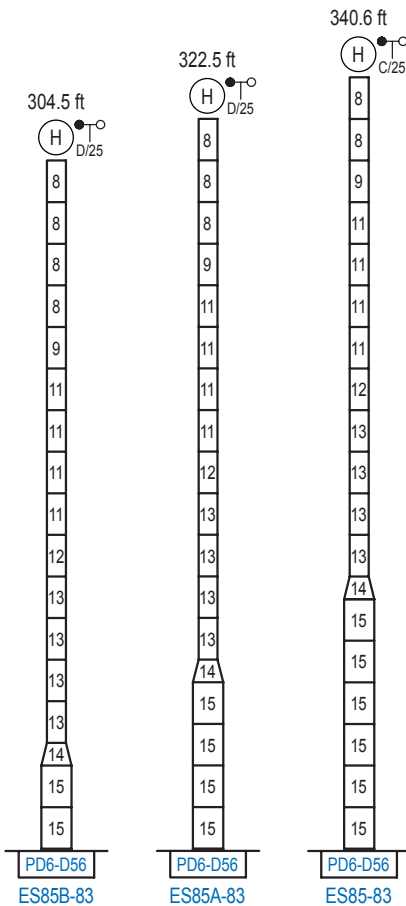
n°	Ref.	h	h
8	D33	8.2	18.0
9	TD34	8.2	18.0
20	D34A	8.2	18.0
21	CLD34A-24	8.2	12.5
1x D33 = 1x D33M			

Otras zonas de viento, alturas superiores, arriostramientos o trepado interno consultar / Other wind zones, additional hook heights, tie frames or internal climbing on request / Autres zones de vent, des hauteurs supplémentaires, entretoisements ou grues avec cage de télescopage intérieure, sur demande / Andere Windzonen, weitere Hakenhöhen, Abspannungen zum Gebäude oder Klettern im Gebäude auf Anfrage / Per zone con velocità del vento particolari, altezze superiori, ancoraggi o rampante in cavedio, consultare il fabbricante / При других ветренных зонах, при большой высоте, привязках к зданию или наращивании крана внутри здания проконсультируйтесь с нами

ALTURAS ESPECIALES

Special heights / Spéciaux hauteurs / Extra Höhen / Conformazioni raccordate per altezze speciali / Для специальной высоты

∅ 13.1 ft



n°	Ref.	h	h
8	D33	8.2	18.0
9	TD34	8.2	18.0
10	D34	8.2	18.0
11	D35	8.2	18.0
12	TD36B	8.2	18.0
13	D36B	8.2	18.0
14	TD56D36	13.1	9.8
15	D56	13.1	18.0
1x D33 = 1x D33M			

Otras zonas de viento o alturas superiores consultar / Other wind zones or additional hook heights on request / Autres zones de vent ou des hauteurs supplémentaires sur demande / Andere Windzonen oder weitere Hakenhöhen auf Anfrage / Per zone con velocità del vento particolari o altezze superiori consultare il fabbricante / При других ветренных зонах о большой высоте проконсультируйтесь с нами