

**DTA** Doble Carro SR/DR Automático. / Double Trolley Automatic SR/DR. / Double Chariot SM/DM Automatique. / Doppel Katze mit automatischer Umscheerung. / Carrello doppio SR/DR automatico. / Автоматическое переключение на двоянную каретку.

**STM** Simple Carro SR/DR Manual. / Simple Trolley Manual SR/DR. / Simple Chariot SM/DM Manuel. / Einfach Katze mit manueller Umscheerung. / Carrello singolo SR/DR manuale. / Механическое (ручное) переключение на одну каретку.

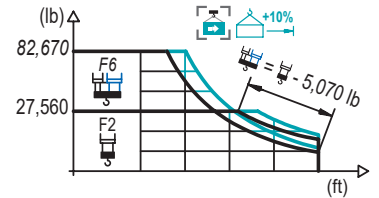
**STF** Simple Carro sin SR/DR. / Simple Trolley without SR/DR. / Simple Chariot sans SM/DM. / Einfach Katze ohne Umscheerung. / Carrello singolo senza SR/DR. / Одинарная каретка, без смены.

**DIAGRAMA DE CARGAS**

Load chart / Diagramme de charges / Lastdiagramm / Diagramma di carico / Диаграмма распределения нагрузки

**DTA**

R	82,670 lb			F6				F2										↔ (ft) ↕ (lb)
	↕	↕	↕	32.8	49.2	65.6	82.0	98.4	114.8	131.2	147.6	164.0	180.4	196.9	213.3	229.7	246.1	
262.5	34.8	84.3	100.1	82,670	54,120	38,010	28,620	27,560	23,660	20,370	17,840	15,810	14,150	12,790	11,620	10,650	9,790	9,040
	37.1	91.2	107.9	82,670	59,170	41,710	31,550	27,560	25,770	22,200	19,440	17,260	15,480	14,000	12,740	11,680	10,760	9,940
246.1	37.4	91.5	108.6	82,670	59,390	41,890	31,680	27,560	25,880	22,310	19,530	17,330	15,540	14,070	12,810	11,730	10,800	
	40.4	98.8	117.5	82,670	65,040	46,030	34,960	27,710	27,560	24,360	21,360	18,960	17,020	15,410	14,040	12,900	11,880	
229.7	44.3	109.6	130.2	82,670	73,040	51,920	39,620	31,570	27,560	27,290	23,960	21,320	19,160	17,350	15,850	14,550		
	47.9	118.8	141.4	82,670	80,090	57,120	43,740	34,960	28,790	27,560	26,230	23,370	21,010	19,050	17,420	16,010		
213.3	49.9	124.0	147.6	82,670	59,990	45,990	36,840	30,380	27,560	27,540	24,520	22,070	20,020	18,300				
	54.1	134.8	160.4	82,670	66,050	50,990	40,810	33,770	28,530	27,560	26,900	24,230	22,000	20,130				
196.9	56.1	139.8	166.7	82,670	68,740	52,930	42,590	35,270	29,850	27,560	27,560	25,240	22,930					
	60.7	152.2	181.4	82,670	75,750	58,470	47,160	39,180	33,250	28,680	27,560	27,560	25,220					
180.4	59.1	148.0	176.5	82,670	73,240	56,480	45,520	37,790	32,030	27,600	27,560	26,900						
	63.3	158.8	180.4	82,670	79,320	61,290	49,490	41,180	34,990	30,230	27,560	27,560						
164.0	59.7	160.1	164.0	82,670	73,960	57,060	45,990	38,180	32,390	27,910	27,560							
	64.0	160.1		82,670	80,290	62,080	50,130	41,730	35,470	30,640	27,650							
147.6	59.7	143.7		82,670	73,940	57,060	45,990	38,180	32,390	28,880								
	64.0	143.7		82,670	80,470	62,190	50,240	41,820	35,560	31,770								
131.2	59.4	127.3		82,670	73,700	56,860	45,810	38,050	33,510									
	64.0	127.3		82,670	80,380	62,130	50,200	41,780	36,860									
98.4	58.4	94.5		82,670	72,330	55,780	47,180											
	63.3	94.5		82,670	79,260	61,240	51,900											

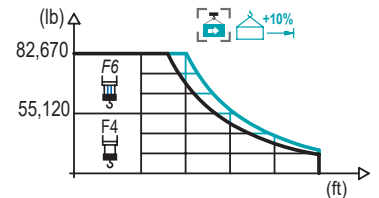


**DIAGRAMA DE CARGAS**

Load chart / Diagramme de charges / Lastdiagramm / Diagramma di carico / Диаграмма распределения нагрузки

**STM**

R	82,670 lb		F6				F4										↔ (ft) ↕ (lb)
	↕	↕	32.8	49.2	65.6	82.0	98.4	114.8	131.2	147.6	164.0	180.4	196.9	213.3	229.7	246.1	
262.5	35.4	50.2	82,670	56,390	40,300	30,930	24,800	20,460	17,240	14,750	12,790	11,180	9,830	8,710	7,740	6,900	6,170
	37.4	52.8	82,670	59,900	42,880	32,960	26,480	21,890	18,500	15,870	13,780	12,080	10,650	9,460	8,440	7,560	6,790
246.1	38.4	54.5	82,670	61,880	44,360	34,130	27,430	22,710	19,200	16,490	14,350	12,590	11,130	9,900	8,840	7,940	
	40.7	57.7	82,670	66,090	47,440	36,570	29,450	24,450	20,720	17,840	15,540	13,670	12,130	10,820	9,700	8,730	
229.7	45.6	65.3	82,670	75,930	54,670	42,280	34,190	28,480	24,230	20,940	18,340	16,230	14,440	12,960	11,680		
	48.6	69.6	82,670	81,700	58,930	45,660	36,970	30,860	26,300	22,800	20,000	17,700	15,810	14,220	12,850		
213.3	51.5	73.8	82,670	63,030	48,900	39,660	33,140	28,290	24,560	21,560	19,140	17,130	15,430				
	55.4	79.4	82,670	68,230	53,020	43,080	36,050	30,820	26,810	23,590	20,990	18,810	16,980				
196.9	58.1	83.3	82,670	72,130	56,110	45,640	38,230	32,740	28,480	25,110	22,350	20,060					
	62.7	89.9	82,670	78,370	61,050	49,710	41,710	35,760	31,170	27,510	24,540	22,070					
180.4	61.7	88.3	82,670	76,920	59,900	48,770	40,900	35,050	30,560	26,960	24,030						
	66.3	95.5	82,670	82,670	65,320	53,240	44,710	38,380	33,490	29,610	26,430						
164.0	62.3	89.2	82,670	77,910	60,670	49,410	41,450	35,540	30,970	27,340							
	67.3	96.8	82,670	82,670	66,270	54,030	45,390	38,980	34,020	30,070							
147.6	62.3	89.6	82,670	78,180	60,890	49,580	41,600	35,670	31,080								
	67.6	97.1	82,670	82,670	66,600	54,300	45,610	39,180	34,190								
131.2	62.3	89.6	82,670	78,260	60,980	49,650	41,640	35,710									
	67.6	97.4	82,670	82,670	66,780	54,450	45,750	39,290									
98.4	62.3	89.2	82,670	77,870	60,650	49,380											
	67.6	97.1	82,670	82,670	66,620	54,320											

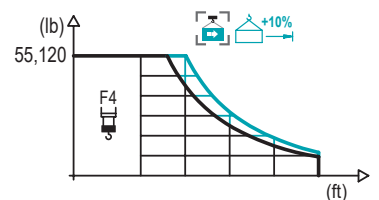


**DIAGRAMA DE CARGAS**

Load chart / Diagramme de charges / Lastdiagramm / Diagramma di carico / Диаграмма распределения нагрузки

**STF**

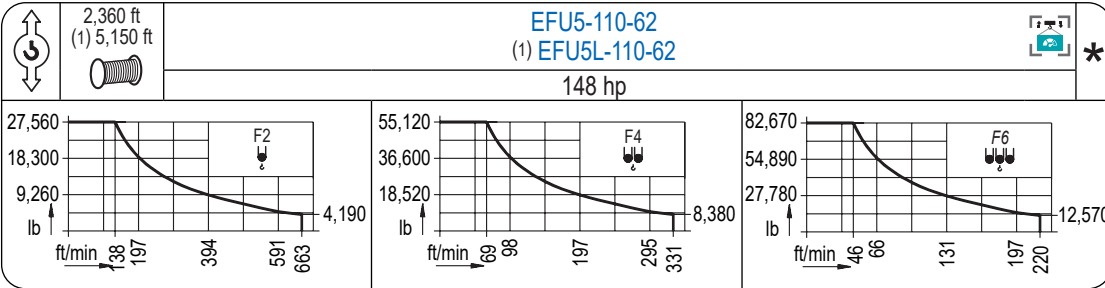
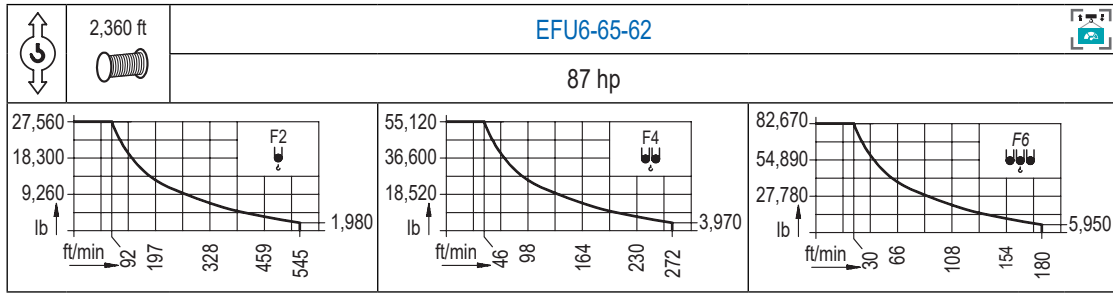
R	55,120 lb		F4										↔ (ft) ↕ (lb)				
	↕	↕	49.2	65.6	82.0	98.4	114.8	131.2	147.6	164.0	180.4	196.9		213.3	229.7	246.1	262.5
262.5	51.5	55,120	41,640	32,170	25,970	21,610	18,340	15,830	13,840	12,210	10,870	9,720	8,750	7,890	7,160		
	54.5	55,120	44,690	34,570	27,950	23,280	19,820	17,150	15,010	13,270	11,840	10,630	9,570	8,690	7,890		
246.1	55.8	55,120	45,660	35,340	28,590	23,830	20,300	17,570	15,390	13,620	12,150	10,910	9,850	8,930			
	59.4	55,120	49,180	38,140	30,910	25,820	22,020	19,090	16,750	14,860	13,270	11,950	10,820	9,830			
229.7	66.6	55,120	43,500	35,340	29,590	25,310	22,000	19,380	17,240	15,450	13,960	12,680					
	71.5	55,120	47,180	38,380	32,190	27,580	24,010	21,190	18,870	16,950	15,340	13,960					
213.3	75.5	55,120	50,090	40,790	34,240	29,370	25,600	22,600	20,150	18,120	16,420						
	81.4	55,120	54,500	44,440	37,350	32,080	28,000	24,760	22,110	19,930	18,080						
196.9	85.0	55,120	46,740	39,310	33,770	29,520	26,120	23,350	21,050								
	91.9	55,120	51,040	42,970	36,970	32,340	28,660	25,660	23,170								
180.4	89.9	55,120	49,850	41,950	36,090	31,570	27,950	25,020									
	97.4	55,120	54,540	45,940	39,570	34,660	30,730	27,540									
164.0	90.9	55,120	50,490	42,480	36,550	31,970	28,330										
	98.8	55,120	55,120	46,580	40,120	35,140	31,170										
147.6	91.2	55,120	50,620	42,610	36,680	32,080											
	99.1	55,120	55,120	46,780	40,300	35,300											
131.2	91.2	55,120	50,660	42,660	36,710												
	99.4	55,120	55,120	46,890	40,390												
98.4	90.9	55,120	50,380														
	98.4	55,120	55,120														



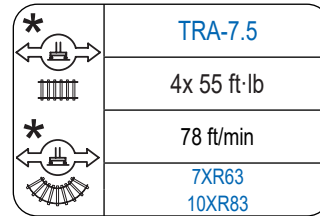
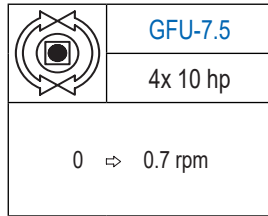
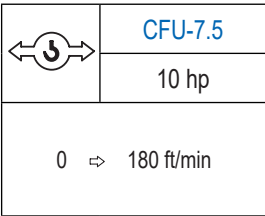
Datos válidos hasta 328 ft de ABG. Para alturas mayores consultar / Valid data up to 328 ft HUH. Additional heights on request / Données valables jusqu'à 328 ft HSC. Pour des autres hauteurs, merci de nous consulter / Gültige Daten bis zu 328 ft HH. Bei höheren Hakenhöhen nachfragen / Dati validi fino a 328 ft ASG. Per altezze superiori consultare Comansa / Допустимые данные до 328 фут ВПК. Для более высоких высот консультируйтесь

# MECANISMOS

Mechanisms / Mécanismes / Antriebe / Meccanismi / Механизмы



(1) Para mecanismos de alta capacidad de cable consultar cargas. / For mechanisms with high drum capacity, request loads. / Pour des mécanismes avec une grande capacité de câble il faut consulter le diagramme de charge. / Für Hubmechanismen mit hoher Kabelkapazität, Lastdiagramm anfragen. / Gru con tamburo ad alta capacità di avvolgimento fune, consultare il diagramma di carico. / Проконсультируйтесь о нагрузках при механизмах с большей вместимостью кабеля.



Elevación / Hoist / Levage / Hub / Sollevamento / Тип механизма (подъем)	Carro / Trolley / Chariot / Laufkatze / Carrelo / Грузовая тележка	Giro / Slewing / Rotation / Drehbewegung / Rotazione / Поворот	Traslación / Travel / Translation / Verfahrbewegung / Traslazione / Ход	Tensión de alimentación / Operating voltage / Tension de service / Betriebsspannung / Tensione di alimentazione / Напряжение источника питания	Potencia requerida / Required power / Puissance requise / Benötigte Leistung / Potenza richiesta / требуемая мощность
EFU6-65-62	CFU-7.5	(4x) GFU-7.5	(4x) TRA-7.5	480 V	95 kVA
EFU5-110-62				3 ph	140 kVA
EFU5L-110-62				60 Hz	140 kVA

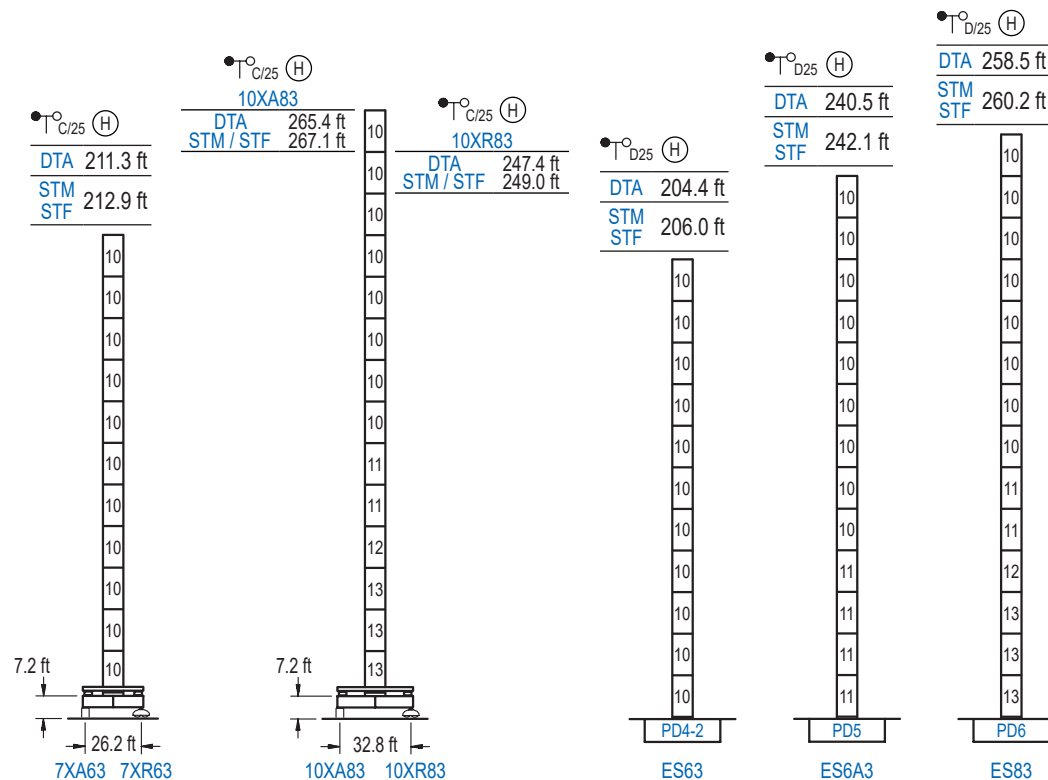
Opcional / Optional / En option / Kaufoption / Opzionale / Опционально

**\***

## ALTURAS BAJO GANCHO

Heights under hook / Hauteurs sous crochet / Hakenhöhen / Altezza sotto gancio / Высота под крюком

∅ 8.2 ft



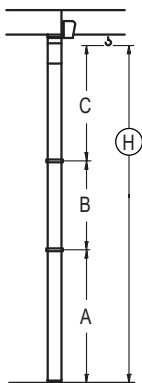
n°	Ref.	∅	h
10	D34	8.2	18.0
11	D35	8.2	18.0
12	TD36B	8.2	18.0
13	D36B	8.2	18.0

Otras zonas de viento o alturas superiores consultar / Other wind zones or additional hook heights on request / Autres zones de vent ou des hauteurs supplémentaires sur demande / Andere Windzonen oder weitere Hakenhöhen auf Anfrage / Per zone con velocità del vento particolari o altezze superiori consultare il fabbricante / При других ветренных зонах о при большой высоте проконсультируйтесь с нами

## GRÚA ARRIOSTRADA

Braced crane / Grue à entretoisement / Abgespannter Kran / Gru ancorata / Нарациваемый кран

Ø 8.2 ft



DTA (H) $\frac{\circ}{C/25}$	7XA63		10XA83	
A max	169.6		223.8	
A min	79.4		133.5	
B max	-	108.3	-	108.3
B min	-	54.1	-	54.1
C max	149.9	149.9	149.9	149.9
H max	319.6	427.8	373.7	482.0

DTA (H) $\frac{\circ}{C/25}$	ES63		ES6A3		ES83	
A max	162.7		198.8		216.9	
A min	72.5		90.6		126.6	
B max	-	108.3	-	108.3	-	108.3
B min	-	54.1	-	54.1	-	54.1
C max	149.9	149.9	149.9	149.9	149.9	149.9
H max	312.7	420.9	348.8	457.0	366.8	475.1

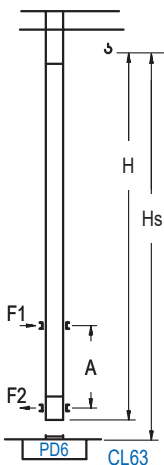
STM STF (H) $\frac{\circ}{C/25}$	7XA63		10XA83	
A max	169.6		223.8	
A min	79.4		133.5	
B max	-	108.3	-	108.3
B min	-	54.1	-	54.1
C max	151.6	151.6	151.6	151.6
H max	321.2	130.9	375.3	483.6

STM STF (H) $\frac{\circ}{C/25}$	ES63		ES6A3		ES83	
A max	162.7		198.8		216.9	
A min	72.5		90.6		126.6	
B max	-	108.3	-	108.3	-	108.3
B min	-	54.1	-	54.1	-	54.1
C max	151.6	151.6	151.6	151.6	151.6	151.6
H max	314.3	422.6	350.4	458.7	368.4	476.7

## GRÚA TREPADORA

Internal climbing crane / Grue avec cage de télescopage intérieure / Kran mit klettern im Gebäude / Gru in rampante in cavedio / Кран с самоподъемом

Ø 8.2 ft



DTA (H) $\frac{\circ}{C/25}$	Hs < 1,310 ft	
	A max (ft)	A min (ft)
198.5 ft 6x D34 + 4x D34A + CLD34A-24	71.9	32.8
180.4 ft 5x D34 + 4x D34A + CLD34A-24	62.7	29.5
162.4 ft 4x D34 + 4x D34A + CLD34A-24	53.8	26.2

STM STF (H) $\frac{\circ}{C/25}$	Hs < 1,310 ft	
	A max (ft)	A min (ft)
200.1 ft 6x D34 + 4x D34A + CLD34A-24	71.9	32.8
182.1 ft 5x D34 + 4x D34A + CLD34A-24	62.7	29.5
164.0 ft 4x D34 + 4x D34A + CLD34A-24	53.8	26.2

Ref.	Ø	h
D34	8.2	18.0
D34A	8.2	18.0
CLD34A-24	8.2	12.5

Otras zonas de viento, alturas superiores, arriostramientos o trepado interno consultar / Other wind zones, additional hook heights, tie frames or internal climbing on request / Autres zones de vent, des hauteurs supplémentaires, entretoisements ou grues avec cage de télescopage intérieure, sur demande / Andere Windzonen, weitere Hakenhöhen, Abspannungen zum Gebäude oder Klettern im Gebäude auf Anfrage / Per zone con velocità del vento particolari, altezze superiori, ancoraggi o rampante in cavedio, consultare il fabbricante / При других ветренных зонах, при большой высоте, привязках к зданию или наращивании крана внутри здания проконсультируйтесь с нами