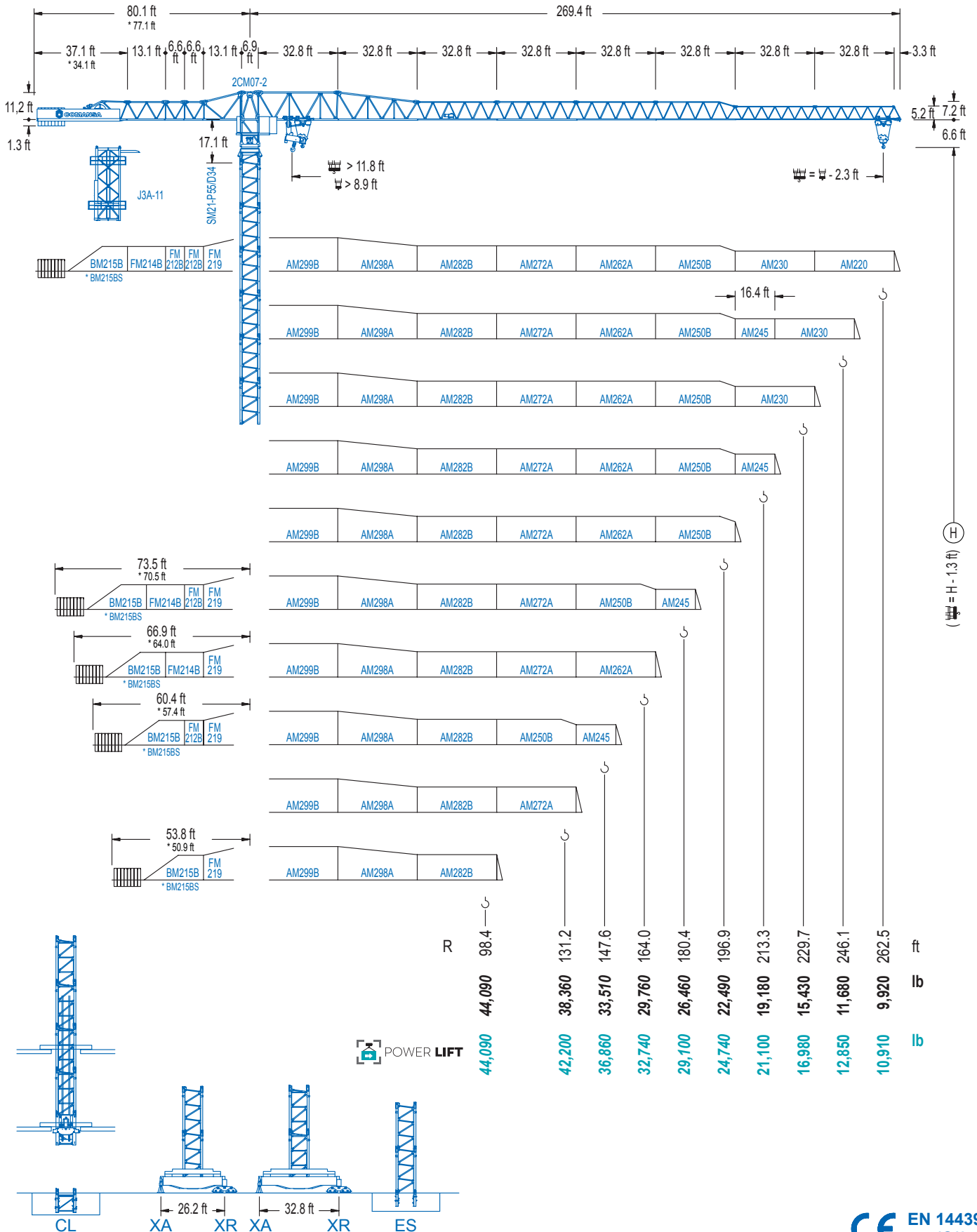


## 2100 Series

## 21 LC 650

## DT 44,090 lb

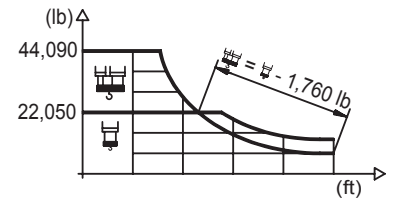


2100 Series

## DIAGRAMA DE CARGAS

Load chart / Diagramme de charges / Lastdiagramm / Diagramma di carico / Диаграмма распределения нагрузки

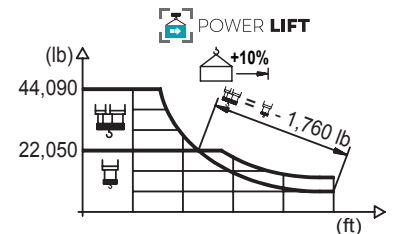
R (ft)	HSC						HSC									
262.5	65.0	75.5	82.0	91.9	98.4	119.1	128.0	147.6	164.0	180.4	196.9	213.3	229.7	246.1	262.5	ft
	44,090	37,280	33,910	29,810	27,540	22,050	22,050	18,850	16,800	15,120	13,730	12,540	11,550	10,670	9,920	lb
246.1		70.2	82.0	91.9	98.4	114.8	128.6	138.5	164.0	180.4	196.9	213.3	229.7	246.1	ft	
		44,090	36,950	32,500	30,050	25,180	22,050	22,050	18,320	16,490	14,990	13,710	12,630	11,680	lb	
229.7			83.3	91.9	98.4	114.8	131.2	153.5	165.7	180.4	196.9	213.3	229.7	ft		
			44,090	39,570	36,620	30,780	26,460	22,050	22,050	20,080	18,280	16,730	15,430	lb		
213.3				94.2	98.4	114.8	131.2	147.6	173.6	187.7	196.9	213.3	ft			
				44,090	41,910	35,300	30,380	26,590	22,050	22,050	20,920	19,180	lb			
196.9					107.0	114.8	131.2	147.6	164.0	180.4	194.6	ft				
					44,090	40,790	35,160	30,820	27,360	24,540	22,490	lb				
180.4						112.9	131.2	147.6	164.0	178.1	ft					
						44,090	37,320	32,720	29,080	26,460	lb					
164.0							113.8	131.2	147.6	161.7	ft					
							44,090	37,630	33,000	29,760	lb					
147.6								113.5	131.2	145.3	ft					
								44,090	37,590	33,510	lb					
131.2									113.8	128.9	ft					
									44,090	38,360	lb					
98.4											96.1	ft				
											44,090	lb				



## DIAGRAMA DE CARGAS POWERLIFT

Load chart PowerLift / Diagramme de charges PowerLift / Lastdiagramm PowerLift / Diagramma di carico PowerLift / Диаграмма распределения нагрузки PowerLift

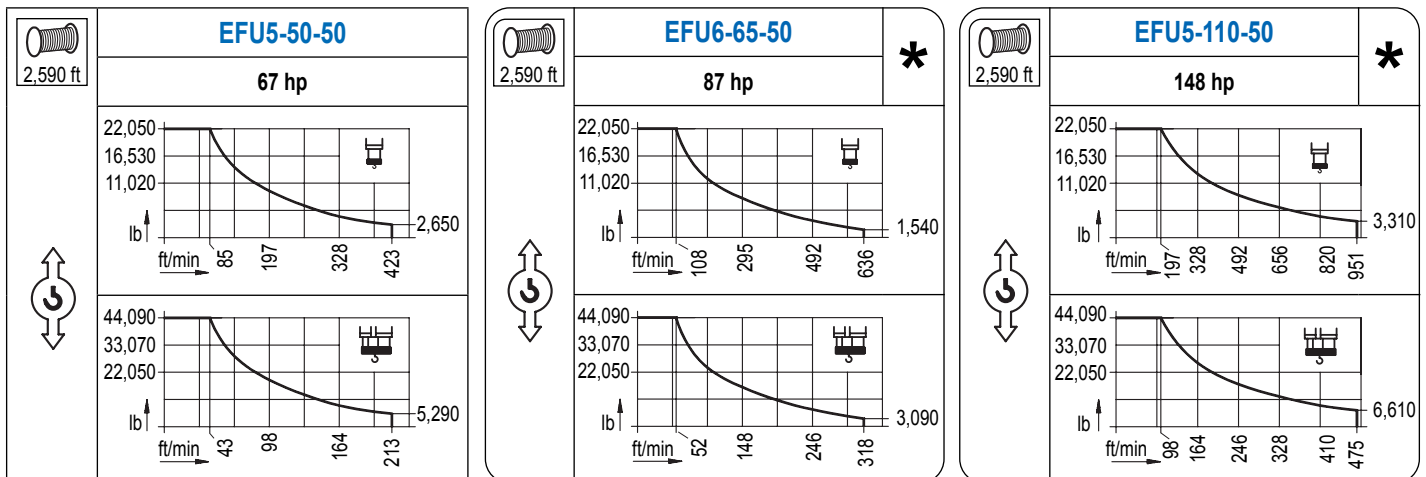
R (ft)	HSC						HSC									
262.5	70.5	75.5	82.0	91.9	98.4	114.8	129.3	139.1	164.0	180.4	196.9	213.3	229.7	246.1	262.5	ft
	44,090	40,810	37,150	32,670	30,200	25,310	22,050	22,050	18,390	16,580	15,060	13,780	12,680	11,730	10,910	lb
246.1		76.1	82.0	91.9	98.4	114.8	140.1	150.6	164.0	180.4	196.9	213.3	229.7	246.1	ft	
		44,090	40,520	35,670	33,000	27,690	22,050	22,050	20,080	18,100	16,450	15,060	13,890	12,850	lb	
229.7				90.9	98.4	114.8	131.2	147.6	167.3	180.4	196.9	213.3	229.7	ft		
				44,090	40,280	33,880	29,140	25,490	22,050	22,050	20,080	18,410	16,980	lb		
213.3					102.4	114.8	131.2	147.6	164.0	189.6	204.7	213.3	ft			
					44,090	38,870	33,490	29,340	26,040	22,050	22,050	21,100	lb			
196.9						116.1	131.2	147.6	164.0	180.4	194.6	ft				
						44,090	38,540	33,800	30,050	26,980	24,740	lb				
180.4							122.7	131.2	147.6	164.0	178.1	ft				
							44,090	40,940	35,930	31,970	29,100	lb				
164.0								123.7	131.2	147.6	161.7	ft				
								44,090	41,310	36,290	32,740	lb				
147.6									123.7	131.2	145.3	ft				
									44,090	41,310	36,860	lb				
131.2										124.0	128.9	ft				
										44,090	42,200	lb				
98.4												96.1	ft			
												44,090	lb			



Datos válidos hasta 328 ft de ABG. Para alturas mayores consultar / Valid data up to 328 ft HUH. Additional heights on request / Données valables jusqu'à 328 ft HSC. Pour des autres hauteurs, merci de nous consulter / Gültige Daten bis zu 328 ft HH. Bei höheren Hakenhöhen nachfragen / Dati validi fino a 328 ft ASG. Per altezze superiori consultare Comansa / Допустимые данные до 328 фут ВПК. Для более высоких высот консультируйтесь

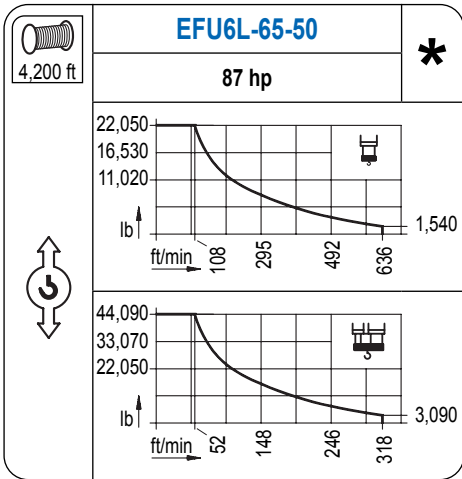
## MECANISMOS

Mechanisms / Mécanismes / Antriebe / Meccanismi / Механизмы

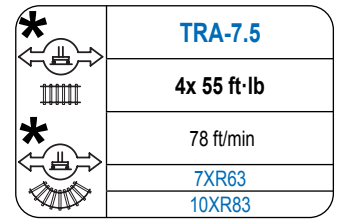
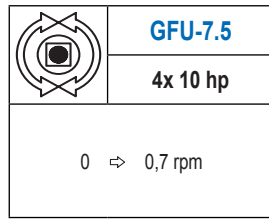
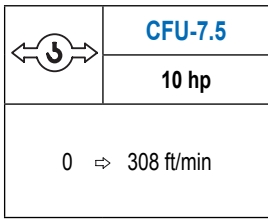
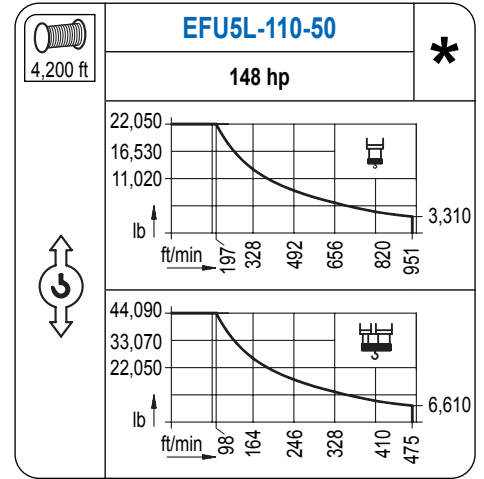


# MECANISMOS

Mechanisms / Mécanismes / Antriebe / Meccanismi / Механизмы



Para mecanismos de alta capacidad de cable consultar cargas. / For mechanisms with high drum capacity, request loads. / Pour des mécanismes avec une grande capacité de câble il faut consulter. / Für Hubmechanismen mit hoher Kabelkapazität, Lastdiagramm anfragen. / Gru con tamburo ad alta capacità di avvolgimento fune, consultare il diagramma di carico. / Проконсультируйтесь о нагрузках при механизмах с большей вместимостью кабеля.



Elevación / Hoist / Levage / Hub / Sollevamento / Тип механизма (подъем)	Carro / Trolley / Chariot / Laufkatze / Carrello / Грузовая тележка	Giro / Slewing / Rotation / Drehbewegung / Rotazione / Поворот	Traslación / Travel / Translation / Verfahrbewegung / Traslazione / Ход	Tensión de alimentación / Operating voltage / Tension de service / Betriebsspannung / Tensione di alimentazione / Напряжение источника питания	Potencia requerida / Required power / Puissance requise / Benötigte Leistung / Potenza richiesta / требуемая мощность
EFU5-50-50	CFU-7.5	(4x) GFU-7.5	(4x) TRA-7.5	480 V 3 ph 60 Hz	80 kVA
EFU6-65-50					95 kVA
EFU6L-65-50					95 kVA
EFU5-110-50					140 kVA
EFU5L-110-50					140 kVA

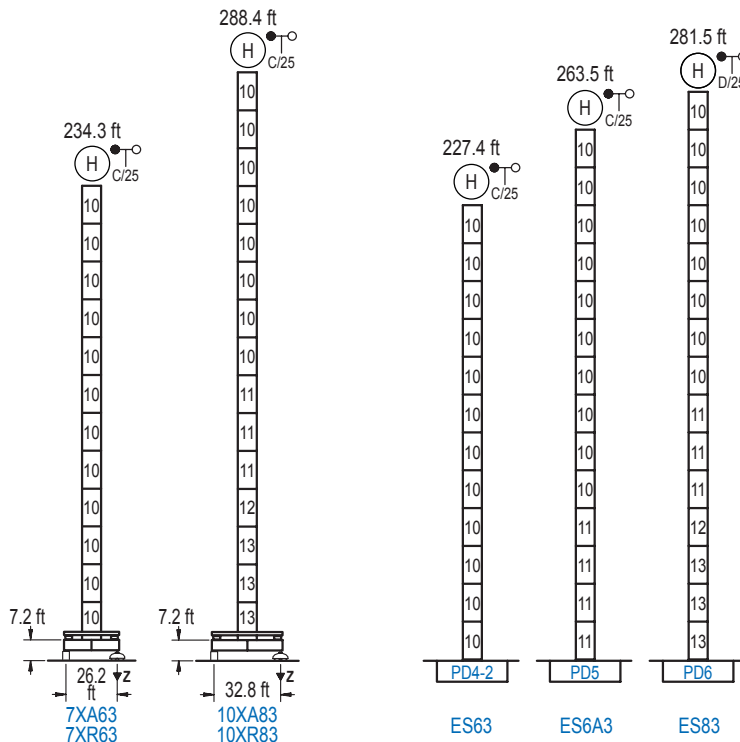
Optional / Optional / En option / Kaufoption / Opzionale / Опционально

**\***

## ALTURAS BAJO GANCHO

Heights under hook / Hauteurs sous crochet / Hakenhöhen / Altezza sotto gancio / Высота под крюком

∅ 8.2 ft



	n°	Ref.	∅	h
	10	D34	8.2	18.0
	11	D35	8.2	18.0
	12	TD36B	8.2	18.0
	13	D36B	8.2	18.0

Z máx.	En servicio / In operation / En service / In Betrieb / In servizio / При работе	7XR63... 309 kip 10XR83... 315 kip
	Fuera de servicio / Out of service / Hors service / Ausser Betrieb / Fuori servizio / При стационарном состоянии	7XR63... 304 kip 10XR83... 410 kip

Otras zonas de viento o alturas superiores consultar / Other wind zones or additional hook heights on request / Autres zones de vent ou des hauteurs supplémentaires sur demande / Andere Windzonen oder weitere Hakenhöhen auf Anfrage / Per zone con velocità del vento particolari o altezze superiori consultare il fabbricante / При других ветренных зонах о при большой высоте проконсультируйтесь с нами

