

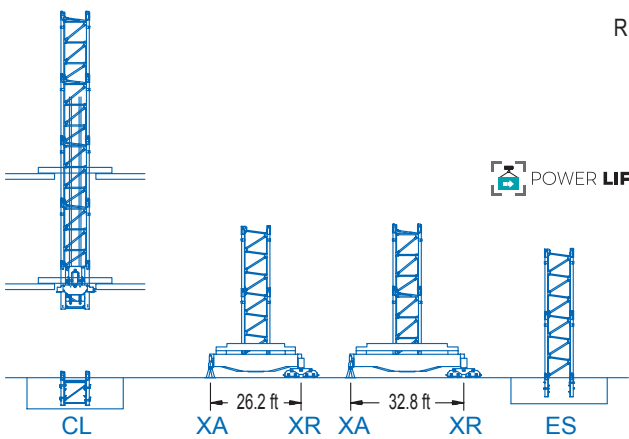
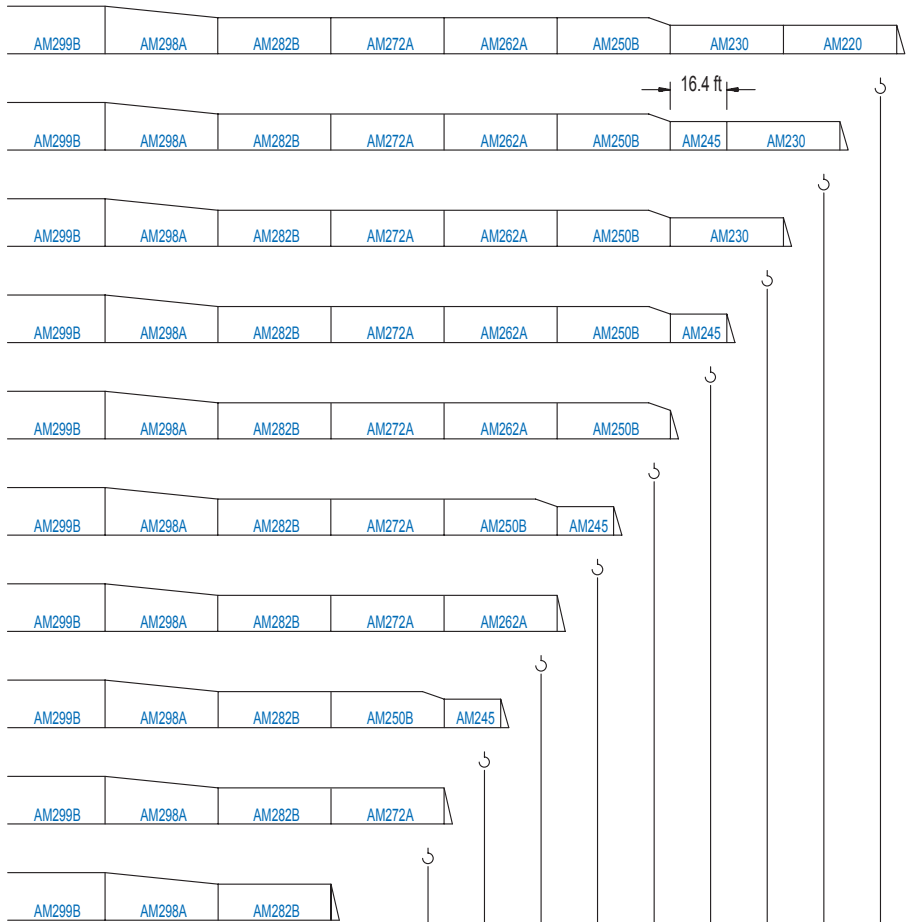
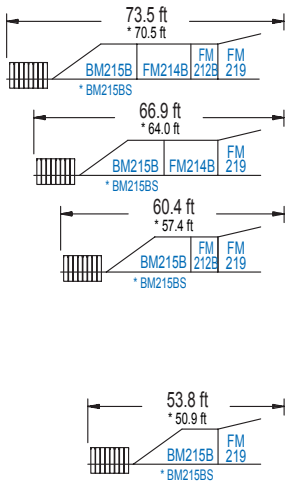
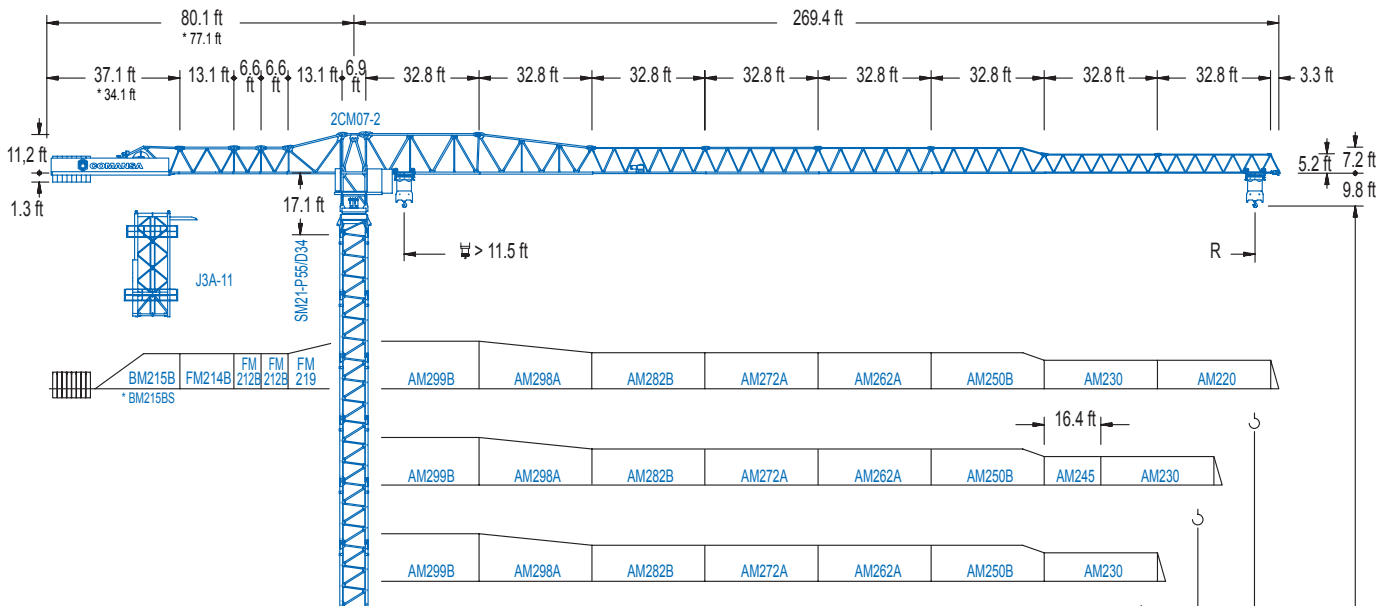


COMANSA

2100 Series

21 LC 650

ST 55,120 lb



POWER LIFT


Configuration	Height (ft)	Weight (lb)
R	98.4	50,930
CL	131.2	37,480
XA	147.6	32,630
XR	164.0	28,880
XA	180.4	25,570
XR	196.9	21,610
ES	213.3	16,980
	229.7	14,550
	246.1	10,430
	262.5	8,490

2100 Series

CE EN 14439 (C/25)

DIAGRAMA DE CARGAS

Load chart / Diagramme de charges / Lastdiagramm / Diagramma di carico / Диаграмма распределения нагрузки

R (ft)																		
262.5	51.8	59.1	65.6	75.5	82.0	91.9	98.4	114.8	131.2	147.6	164.0	180.4	196.9	213.3	229.7	246.1	262.5	ft
	55,120	47,640	42,260	36,050	32,780	28,770	26,570	22,180	18,920	16,400	14,400	12,760	11,420	10,270	9,300	8,470	7,720	lb
246.1		56.1	65.6	75.5	82.0	91.9	98.4	114.8	131.2	147.6	164.0	180.4	196.9	213.3	229.7	246.1	ft	
		55,120	46,270	39,510	35,930	31,590	29,190	24,430	20,880	18,120	15,960	14,180	12,700	11,460	10,410	9,480	lb	
229.7			67.3	75.5	82.0	91.9	98.4	114.8	131.2	147.6	164.0	180.4	196.9	213.3	229.7	ft		
			55,120	48,390	44,090	38,820	35,910	30,160	25,880	22,580	19,930	17,790	16,010	14,510	13,230	lb		
213.3				76.1	82.0	91.9	98.4	114.8	131.2	147.6	164.0	180.4	196.9	213.3	ft			
				55,120	50,660	44,670	41,360	34,790	29,920	26,150	23,150	20,720	18,700	16,980	lb			
196.9					85.6	91.9	98.4	114.8	131.2	147.6	164.0	180.4	196.9	ft				
					55,120	51,060	47,310	39,860	34,350	30,070	26,680	23,900	21,610	lb				
180.4						90.9	98.4	114.8	131.2	147.6	164.0	180.4	ft					
						55,120	50,420	42,530	36,660	32,120	28,510	25,570	lb					
164.0							91.9	98.4	114.8	131.2	147.6	164.0	ft					
							55,120	51,040	43,060	37,130	32,540	28,880	lb					
147.6								91.9	98.4	114.8	131.2	147.6	ft					
								55,120	51,190	43,190	37,240	32,630	lb					
131.2									92.5	98.4	114.8	131.2	ft					
									55,120	51,520	43,470	37,480	lb					
98.4										91.5	98.4	ft						
										55,120	50,930	lb						

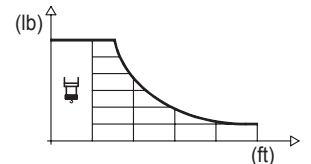

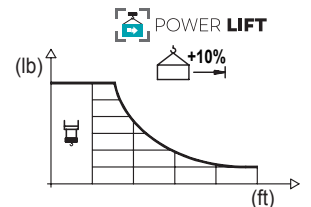


DIAGRAMA DE CARGAS POWERLIFT

Load chart PowerLift / Diagramme de charges PowerLift / Lastdiagramm PowerLift / Diagramma di carico PowerLift / Диаграмма распределения нагрузки PowerLift

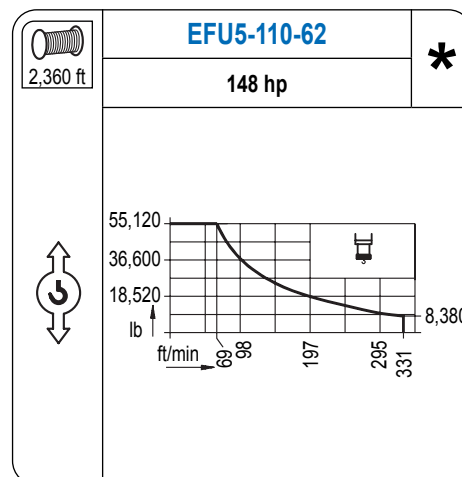
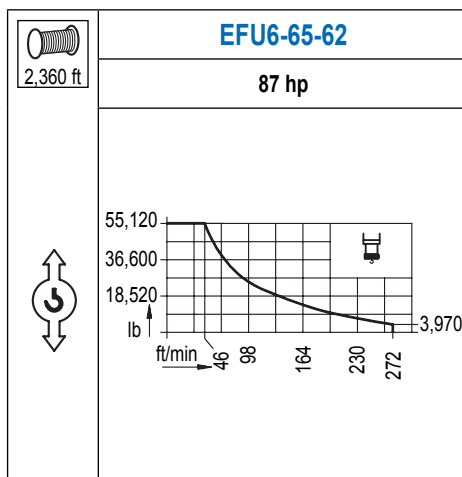
R (ft)																		
262.5	55.4	59.1	65.6	75.5	82.0	91.9	98.4	114.8	131.2	147.6	164.0	180.4	196.9	213.3	229.7	246.1	262.5	ft
	55,120	51,230	45,480	38,820	35,320	31,040	28,660	23,990	20,480	17,790	15,650	13,910	12,460	11,220	10,190	9,280	8,490	lb
246.1		60.0	65.6	75.5	82.0	91.9	98.4	114.8	131.2	147.6	164.0	180.4	196.9	213.3	229.7	246.1	ft	
		55,120	49,980	42,700	38,870	34,190	31,610	26,480	22,660	19,730	17,390	15,480	13,890	12,570	11,420	10,430	lb	
229.7			72.2	82.0	91.9	98.4	114.8	131.2	147.6	164.0	180.4	196.9	213.3	229.7	ft			
			55,120	47,880	42,200	39,070	32,850	28,220	24,650	21,800	19,490	17,570	15,940	14,550	lb			
213.3				82.0	91.9	98.4	114.8	131.2	147.6	164.0	180.4	196.9	213.3	ft				
				55,120	48,700	45,110	38,010	32,720	28,620	25,370	22,730	20,520	18,670	lb				
196.9					92.8	98.4	114.8	131.2	147.6	164.0	180.4	196.9	ft					
					55,120	51,700	43,630	37,610	32,960	29,280	26,260	23,770	lb					
180.4						98.4	114.8	131.2	147.6	164.0	180.4	ft						
						55,120	46,580	40,190	35,250	31,330	28,130	lb						
164.0							99.7	114.8	131.2	147.6	164.0	ft						
							55,120	47,220	40,740	35,740	31,770	lb						
147.6								100.1	114.8	131.2	147.6	ft						
								55,120	47,400	40,920	35,890	lb						
131.2									100.7	114.8	131.2	ft						
									55,120	47,770	41,230	lb						
98.4										98.4	ft							
										55,120	lb							



Datos válidos hasta 328 ft de ABG. Para alturas mayores consultar / Valid data up to 328 ft HUH. Additional heights on request / Données valables jusqu'à 328 ft HSC. Pour des autres hauteurs, merci de nous consulter / Gültige Daten bis zu 328 ft HH. Bei höheren Hakenhöhen nachfragen / Dati validi fino a 328 ft ASG. Per altezze superiori consultare Comansa / Допустимые данные до 328 фут ВПК. Для более высоких высот консультируйтесь

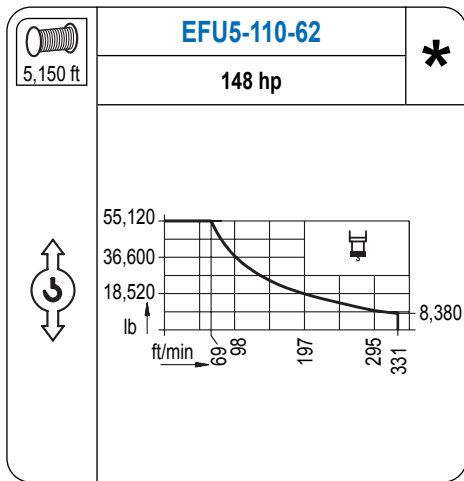
MECANISMOS

Mechanisms / Mécanismes / Antriebe / Meccanismi / Механизмы

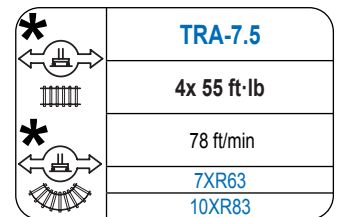
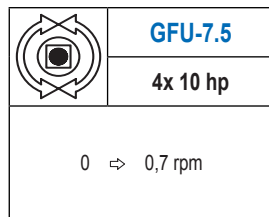
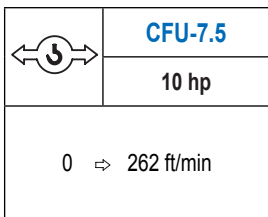


MECANISMOS

Mechanisms / Mécanismes / Antriebe / Meccanismi / Механизмы



Para mecanismos de alta capacidad de cable consultar cargas. / For mechanisms with high drum capacity, request loads. / Pour des mécanismes avec une grande capacité de câble il faut consulter. / Für Hubmechanismen mit hoher Kabelkapazität, Lastdiagramm anfragen. / Gru con tamburo ad alta capacità di avvolgimento fune, consultare il diagramma di carico. / Проконсультируйтесь с нагрузках при механизмах с большей вместимостью кабеля.



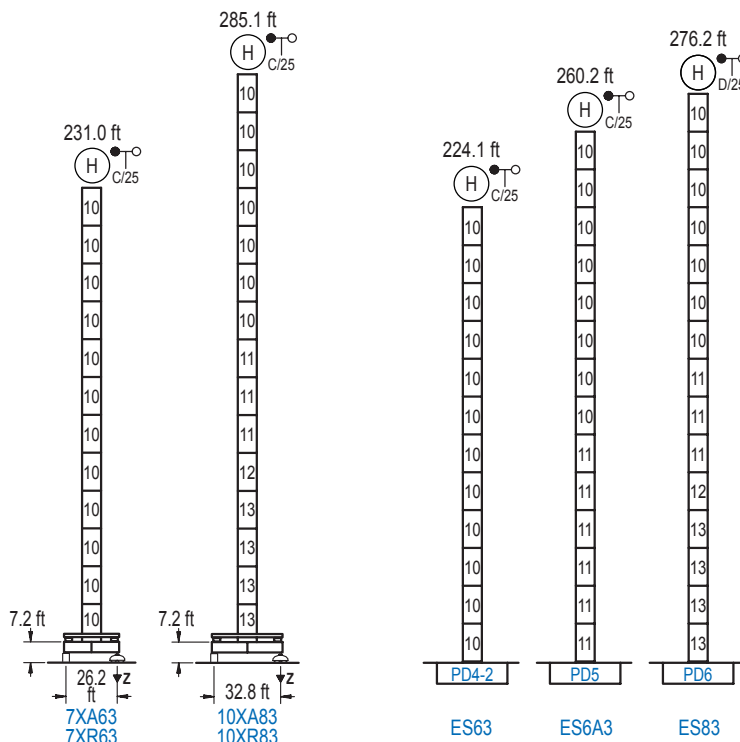
Elevación / Hoist / Levage / Hub / Sollevamento / Тип механизма (подъем)	Carro / Trolley / Chariot / Laufkatze / Carrello / Грузовая тележка	Giro / Slewing / Rotation / Drehbewegung / Rotazione / Поворот	Traslación / Travel / Translation / Verfahrbewegung / Traslazione / Ход	Tensión de alimentación / Operating voltage / Tension de service / Betriebsspannung / Tensione di alimentazione / Напряжение источника питания	Potencia requerida / Required power / Puissance requise / Benötigte Leistung / Potenza richiesta / требуемая мощность
EFU6-65-62	CFU-7.5	(4x) GFU-7.5	(4x) TRA-7.5	480 V	95 kVA
EFU5-110-62				3 ph	140 kVA
EFU5L-110-62				60 Hz	140 kVA

Optional / Optionale / Opzionale / Опционально	*
--	---

ALTURAS BAJO GANCHO

Heights under hook / Hauteurs sous crochet / Hakenhöhen / Altezza sotto gancio / Высота под крюком

∅ 2,5 m



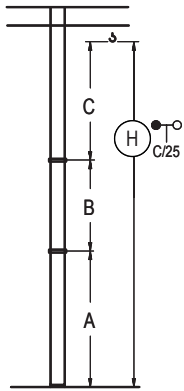
	n°	Ref.	∅	h
	10	D34	8.2	18.0
	11	D35	8.2	18.0
	12	TD36B	8.2	18.0
	13	D36B	8.2	18.0

Z máx.	En servicio / In operation / En service / In Betrieb / In servizio / При работе	7XR63... 311 kip 10XR83... 320 kip
	Fuera de servicio / Out of service / Hors service / Ausser Betrieb / Fuori servizio / В стационарном состоянии	7XR63... 304 kip 10XR83... 412 kip

Otras zonas de viento o alturas superiores consultar / Other wind zones or additional hook heights on request / Autres zones de vent ou des hauteurs supplémentaires sur demande / Andere Windzonen oder weitere Hakenhöhen auf Anfrage / Per zone con velocità del vento particolari o altezze superiori consultare il fabbricante / При других ветренных зонах о при большой высоте проконсультируйтесь с нами

GRÚA ARRIOSTRADA

Braced crane / Grue à entretoisement / Abgespannter Kran / Gru ancorata / Нарастиваемый кран

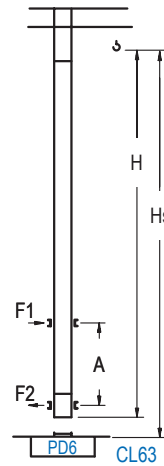



	7XA63	10XA83
A max	172.9	241.8
A min	97.4	169.6
B max	-	126.3
B min	-	72.2
C max	169.6	169.6
H max	357.3	483.6

	ES63	ES6A3	ES83
A max	180.8	216.9	234.9
A min	90.6	144.7	162.7
B max	-	126.3	-
B min	-	72.2	-
C max	169.6	169.6	169.6
H max	350.4	476.7	530.8

GRÚA TREPADORA

Internal climbing crane / Grue avec cage de télescopage intérieure / Kran mit klettern im Gebäude / Gru in rampante in cavedio / Кран с самоподъемом



	Hs < 1,310 ft	
	A max (ft)	A min (ft)
200.1 ft 6x D34 + 4x D34A + CLD34A-24	71.9	32.8
182.1 ft 5x D34 + 4x D34A + CLD34A-24	62.7	29.5
164.0 ft 4x D34 + 4x D34A + CLD34A-24	53.8	26.2

n°	Ref.	□	h
20	D34A	8.2	18.0
21	CLD34A-24	8.2	12.5

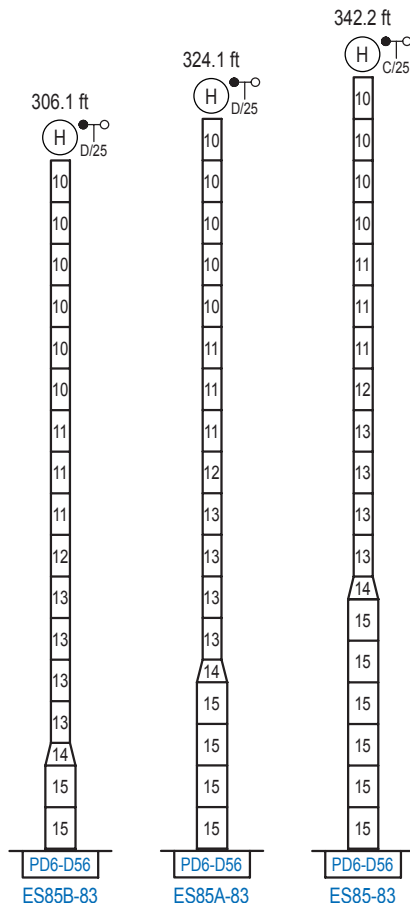
Otras zonas de viento, alturas superiores, arriostramientos o trepado interno consultar / Other wind zones, additional hook heights, tie frames or internal climbing on request / Autres zones de vent, des hauteurs supplémentaires, entretoisements ou grues avec cage de télescopage intérieure, sur demande / Andere Windzonen, weitere Hakenhöhen, Abspannungen zum Gebäude oder Klettern im Gebäude auf Anfrage / Per zone con velocità del vento particolari, altezze superiori, ancoraggi o rampante in cavedio, consultare il fabbricante / При других ветренных зонах, при большой высоте, привязках к зданию или наращивании крана внутри здания проконсультируйтесь с нами

ALTURAS ESPECIALES

Special heights / Spéciaux hauteurs / Extra Höhen / Conformazioni raccordate per altezze speciali / Для специальной высоты

□ 13.1 ft

2100 Series



n°	Ref.	□	h
10	D34	8.2	18.0
11	D35	8.2	18.0
12	TD36B	8.2	18.0
13	D36B	8.2	18.0
14	TD56D36	13.1	9.8
15	D56	13.1	18.0

Otras zonas de viento o alturas superiores consultar / Other wind zones or additional hook heights on request / Autres zones de vent ou des hauteurs supplémentaires sur demande / Andere Windzonen oder weitere Hakenhöhen auf Anfrage / Per zone con velocità del vento particolari o altezze superiori consultare il fabbricante / При других ветренных зонах о при большой высоте проконсультируйтесь с нами