

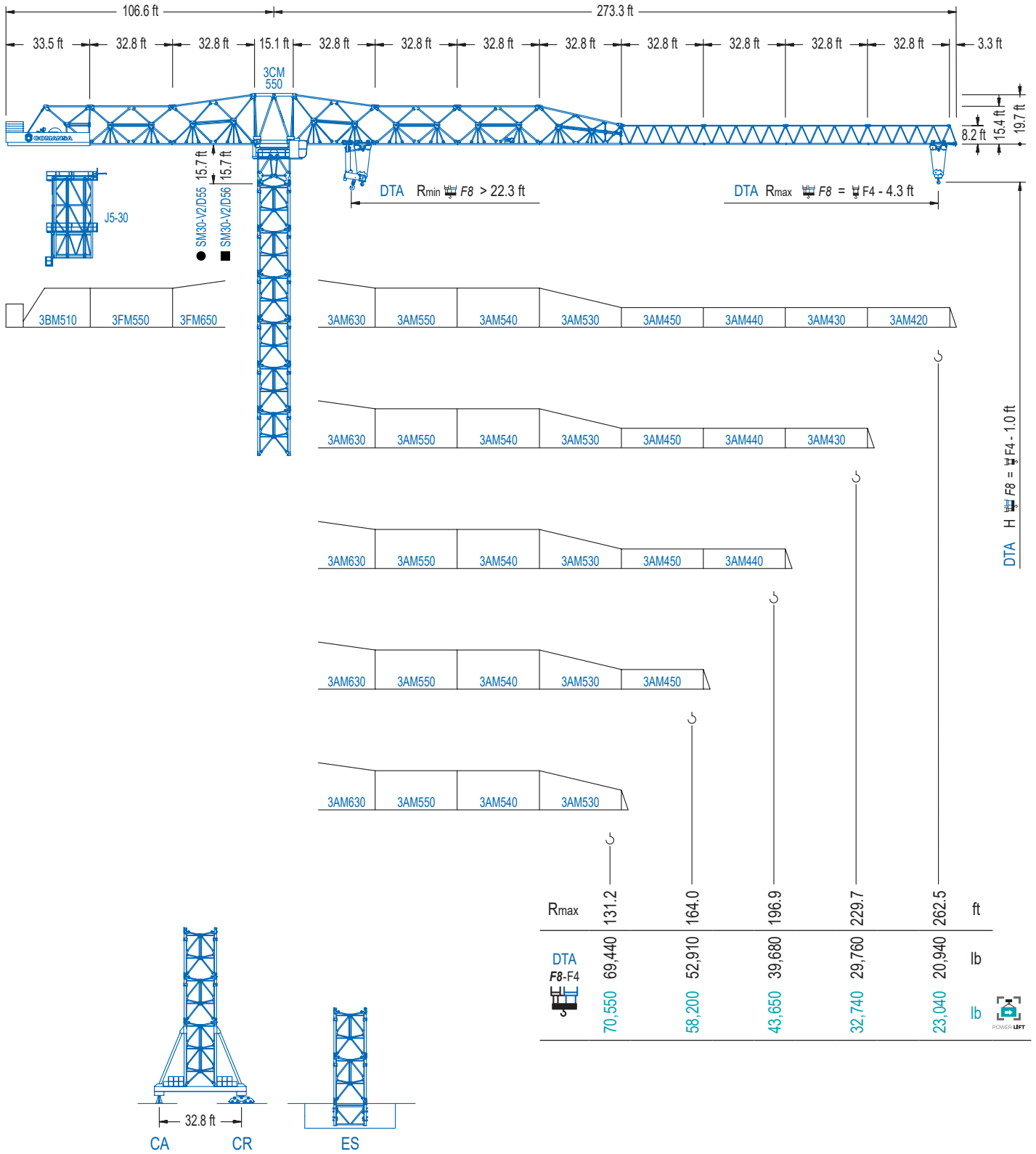


COMANSA

3000 Series

30LC1100

141,090 lb



3000 Series

DTA Doble Carro SR/DR Automático. / Double Trolley Automatic SR/DR. / Double Chariot SM/DM Automatique. / Doppel Katze mit automatischer Umscheerung. / Carrello doppio SR/DR automatico. / Автоматическое переключение на двоенную каретку.

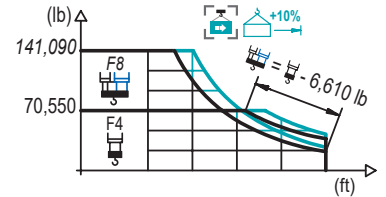
CE EN 14439

DIAGRAMA DE CARGAS

Load chart / Diagramme de charges / Lastdiagramm / Diagramma di carico / Диаграмма распределения нагрузки

DTA

| R | 141,090 lb | | 70,550 lb | | F8 | | | F4 | | | | | | | | | | ↔ (ft) ↓ (lb) | |
|-------|------------|-------|-----------|---------|---------|---------|--------|--------|--------|--------|--------|--------|--------|--------|--------|--------|--------|------------------|-------|
| | ↔ | ↔ | ↔ | ↔ | 49.2 | 65.6 | 82.0 | 98.4 | 114.8 | 131.2 | 147.6 | 164.0 | 180.4 | 196.9 | 213.3 | 229.7 | 246.1 | | 262.5 |
| 262.5 | 52.8 | 91.5 | 98.4 | 141,090 | 107,760 | 81,280 | 70,550 | 58,910 | 50,260 | 43,630 | 38,360 | 34,080 | 30,560 | 27,580 | 25,040 | 22,860 | 20,940 | | |
| | 55.1 | 95.8 | 105.6 | 141,090 | 113,850 | 86,050 | 70,550 | 63,870 | 54,560 | 47,420 | 41,760 | 37,170 | 33,380 | 30,180 | 27,450 | 25,090 | 23,040 | | |
| 229.7 | 59.4 | 103.3 | 112.2 | 141,090 | 124,430 | 94,330 | 74,960 | 68,630 | 58,710 | 51,080 | 45,040 | 40,150 | 36,090 | 32,670 | 29,760 | | | | |
| | 62.7 | 99.4 | 120.7 | 141,090 | 132,980 | 101,040 | 80,470 | 70,550 | 64,020 | 55,780 | 49,250 | 43,960 | 39,570 | 35,890 | 32,740 | | | | |
| 192.6 | 63.3 | 110.6 | 120.4 | 141,090 | 134,790 | 102,450 | 81,640 | 70,550 | 64,200 | 55,930 | 49,380 | 44,070 | 39,680 | | | | | | |
| | 67.3 | 117.8 | 130.9 | 141,090 | 110,580 | 88,320 | 72,800 | 70,240 | 61,290 | 54,190 | 48,410 | 43,650 | | | | | | | |
| 164.0 | 66.3 | 113.2 | 128.3 | 141,090 | 108,690 | 86,750 | 71,450 | 68,630 | 59,850 | 52,910 | | | | | | | | | |
| | 70.9 | 124.3 | 138.8 | 141,090 | 118,060 | 94,470 | 78,000 | 70,550 | 65,760 | 58,200 | | | | | | | | | |
| 131.2 | 66.3 | 116.1 | 129.6 | 141,090 | 108,710 | 86,770 | 71,470 | 69,440 | | | | | | | | | | | |
| | 71.2 | 124.7 | 131.2 | 141,090 | 118,720 | 95,020 | 78,460 | 70,550 | | | | | | | | | | | |

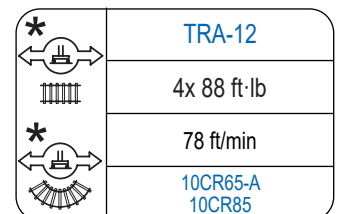
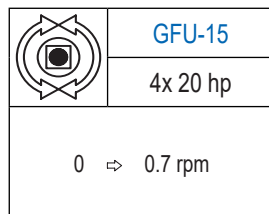
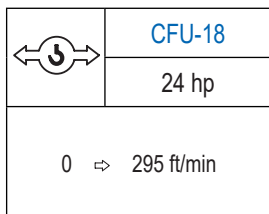
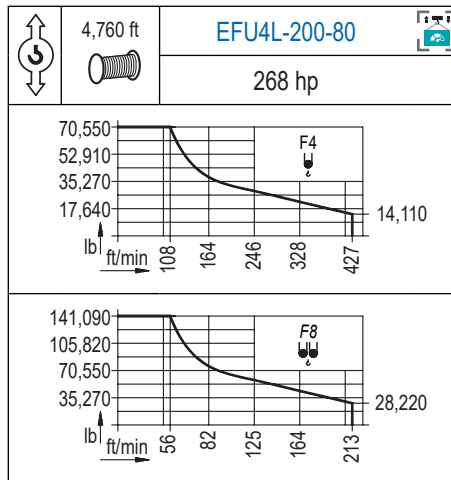


Datos válidos hasta 328 ft de ABG. Para alturas mayores consultar / Valid data up to 328 ft HUH. Additional heights on request / Données valables jusqu'à 328 ft HSC. Pour des autres hauteurs, merci de nous consulter / Gültige Daten bis zu 328 ft HH. Bei höheren Hakenhöhen nachfragen / Dati validi fino a 328 ft ASG. Per altezze superiori consultare Comansa / Допустимые данные до 328 фут ВПК. Для более высоких высот консультируйтесь

MECANISMOS

Mechanisms / Mécanismes / Antriebe / Meccanismi / Механизмы

3000 Series



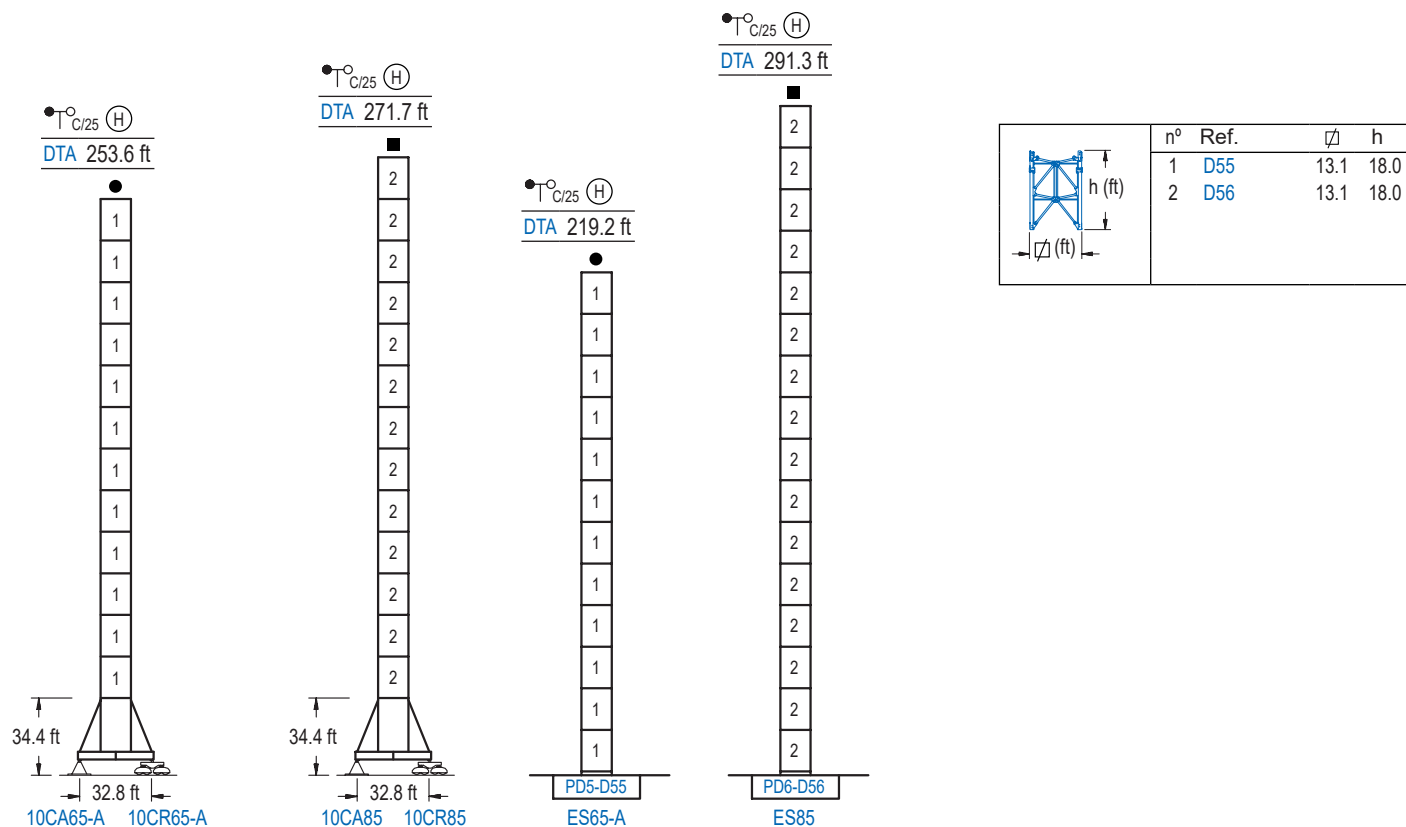
| Elevación / Hoist / Levage / Hub / Sollevamento / Тип механизма (подъем) | Carro / Trolley / Chariot / Laufkatze / Carrello / Грузовая тележка | Giro / Slewing / Rotation / Drehbewegung / Rotazione / Поворот | Traslación / Travel / Translation / Verfahrbewegung / Traslazione / Ход | Tensión de alimentación / Operating voltage / Tension de service / Betriebsspannung / Tensione di alimentazione / Напряжение источника питания | Potencia requerida / Required power / Puissance requise / Benötigte Leistung / Potenza richiesta / требуемая мощность |
|--|---|--|---|--|---|
| EFU4L-200-80 | CFU-18 | (4x) GFU-15 | (4x) TRA-12 | 480 V 3 ph 60 Hz | 262 kVA |

Opzionale / Optional / En option / Kaufoption / Opzionale / Опционально

ALTURAS BAJO GANCHO

Heights under hook / Hauteurs sous crochet / Hakenhöhen / Altezza sotto gancio / Высота под крюком

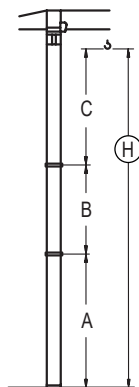
∅ 13.1 ft



GRÚA ARRIOSTRADA

Braced crane / Grue à entretoisement / Abgespannter Kran / Gru ancorata / Наращиваемый кран

∅ 13.1 ft



| DTA (H) $\frac{\circ}{C/25}$ | 10CA65-A | | 10CA85 | |
|------------------------------|----------|-------|--------|-------|
| A max | 196.9 | | 214.9 | |
| A min | 106.6 | | 124.7 | |
| B max | - | 108.3 | - | 162.4 |
| B min | - | 72.2 | - | 72.2 |
| C max | 165.0 | 165.0 | 219.2 | 219.2 |
| H max | 363.5 | 470.1 | 434.1 | 596.5 |

| DTA (H) $\frac{\circ}{C/25}$ | ES65-A | | ES85 | |
|------------------------------|--------|-------|-------|-------|
| A max | 162.4 | | 234.6 | |
| A min | 72.2 | | 108.3 | |
| B max | - | 108.3 | - | 162.4 |
| B min | - | 72.2 | - | 72.2 |
| C max | 165.0 | 165.0 | 219.2 | 219.2 |
| H max | 470.1 | 132.8 | 453.7 | 616.1 |

Otras zonas de viento o alturas superiores consultar / Other wind zones or additional hook heights on request / Autres zones de vent ou des hauteurs supplémentaires sur demande / Andere Windzonen oder weitere Hakenhöhen auf Anfrage / Per zone con velocità del vento particolari o altezze superiori consultare il fabbricante / При других ветренных зонах о большой высоте проконсультируйтесь с нами

3000 Series

