



3000 Series

DIAGRAMA DE CARGAS

Load chart / Diagramme de charges / Lastdiagramm / Diagramma di carico / Диаграмма распределения нагрузки

R (ft)																					
262.5	52.8	82.0	91.5	70,550	98.4	114.8	124.7	131.2	147.6	157.5	164.0	180.4	190.3	196.9	213.3	223.1	229.7	246.1	255.9	262.5	ft 141,090 81,280 70,550 70,550 58,910 53,440 50,260 43,630 40,320 38,360 34,080 31,900 30,560 27,580 26,010 25,040 22,860 21,670 20,940
229.7	59.4	82.0	91.9	70,550	103.3	112.2	124.7	131.2	147.6	157.5	164.0	180.4	190.3	196.9	213.3	223.1	229.7	ft 141,090 94,330 81,810 70,550 70,550 62,350 58,710 51,080 47,310 45,040 40,150 37,610 36,090 32,670 30,860 29,760			
196.9	63.3	82.0	91.9	70,550	98.4	110.6	120.4	131.2	147.6	157.5	164.0	180.4	190.3	196.9	ft 141,090 102,450 89,000 81,640 70,550 70,550 64,200 55,930 51,830 49,380 44,070 41,360 39,680						
164.0	66.3	82.0	91.9	70,550	98.4	114.8	116.1	128.3	147.6	157.5	164.0	ft 141,090 108,690 94,510 86,750 71,450 70,550 70,550 59,850 55,510 52,910									
131.2	66.3	82.0	91.9	70,550	98.4	116.1	129.6	131.2	ft 141,090 108,710 94,530 86,770 70,550 70,550 69,440												

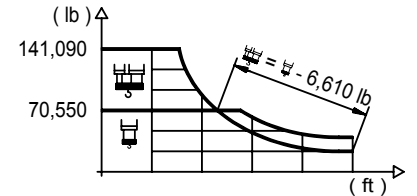


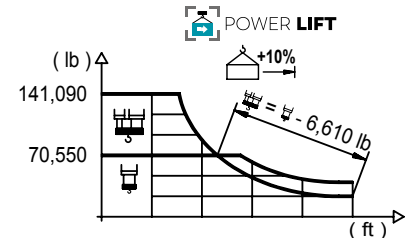


DIAGRAMA DE CARGAS POWERLIFT

Load chart PowerLift / Diagramme de charges PowerLift / Lastdiagramm PowerLift / Diagramma di carico PowerLift / Диаграмма распределения нагрузки PowerLift

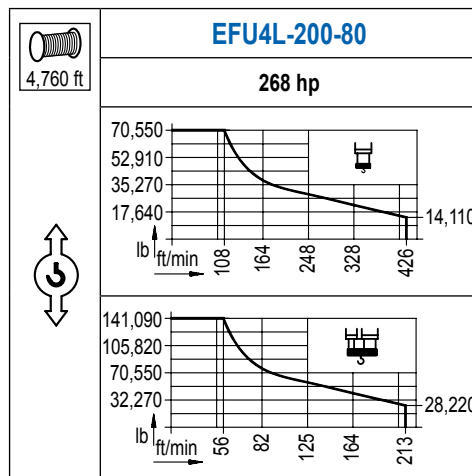
R (ft)																					
262.5	55.1	82.0	91.9	70,550	95.8	105.6	124.7	131.2	147.6	157.5	164.0	180.4	190.3	196.9	213.3	223.1	229.7	246.1	255.9	262.5	ft 141,090 86,050 74,490 70,550 70,550 57,980 54,560 47,420 43,870 41,760 37,170 34,810 33,380 30,180 28,480 27,450 25,090 23,830 23,040
229.7	62.7	82.0	91.9	70,550	99.4	120.7	124.7	131.2	147.6	157.5	164.0	180.4	190.3	196.9	213.3	223.1	229.7	ft 141,090 101,040 87,740 70,550 70,550 67,970 64,020 55,780 51,700 49,250 43,960 41,230 39,570 35,890 33,950 32,740			
196.9	67.3	82.0	91.9	70,550	98.4	114.8	117.8	130.9	147.6	157.5	164.0	180.4	190.3	196.9	ft 141,090 110,580 96,210 88,320 72,800 70,550 70,550 61,290 56,830 54,190 48,410 45,460 43,650						
164.0	70.9	82.0	91.9	70,550	98.4	114.8	124.3	138.8	147.6	157.5	164.0	ft 141,090 118,060 102,820 94,470 78,000 70,550 70,550 65,760 61,020 58,200									
131.2	71.2	82.0	91.9	70,550	98.4	114.8	124.7	131.2	ft 141,090 118,720 103,400 95,020 78,460 70,550 70,550												



3000 Series


MECANISMOS

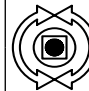
Mechanisms / Mécanismes / Antriebe / Meccanismi / Механизмы

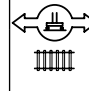


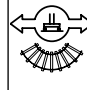
MECANISMOS

Mechanisms / Mécanismes / Antriebe / Meccanismi / Механизмы

	CFU-18
	24 hp
0 ⇔ 295 ft/min	

	GFU-15
	4x 20 hp
0 ⇔ 0,7 rpm	

	TRA-12
	4x 88 ft-lb
78 ft/min	
10XR65-A	10CR85

	TRA-12VC
	4x 88 ft-lb
78 ft/min	
10XR65-A	10CR85

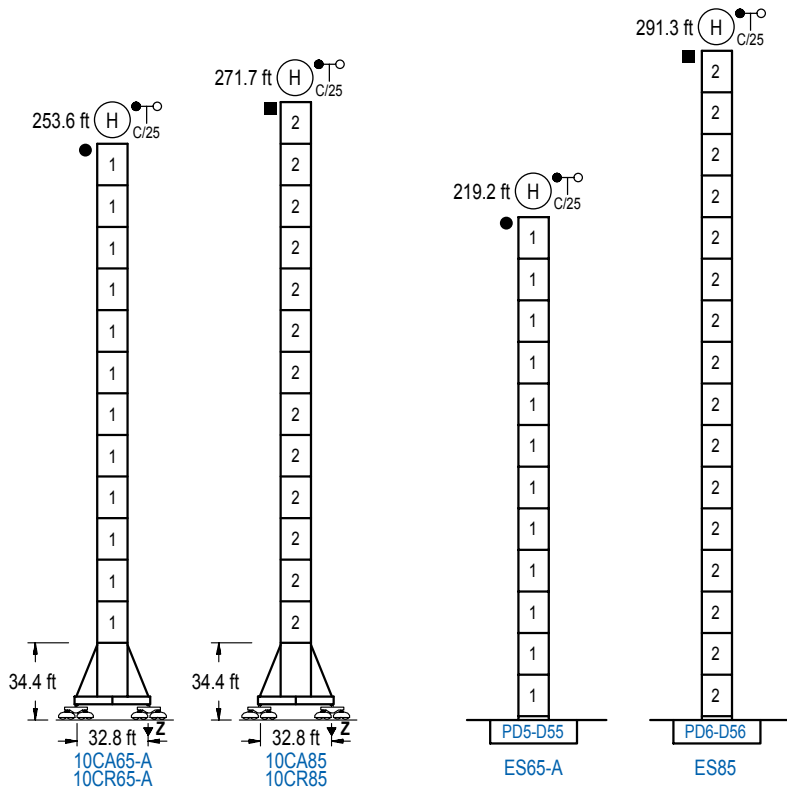
POTENCIA / POWER / PUISSANCE / LEISTUNG / POTENZA / МОЩНОСТЬ				Tensión de alimentación / Operating voltage / Tension de service / Betriebsspannung / Tensione di alimentazione / Напряжение источника питания	Generador / Generator / Générateur / Generator / Generatore / Генератор
Elevación / Hoist / Levage / Hub / Sollevamento / Тип механизма (подъем)	Carro / Trolley / Chariot / Laufkatze / Carrello / Грузовая тележка	Giro / Slewing / Rotation / Drehbewegung / Rotazione / Поворот	Traslación / Travel / Translation / Verfahrbewegung / Traslazione / Ход		
EFU4L-200-80	CFU-18	(4x) GFU-15	(4x) TRA-12	480 V 3ph 60 Hz	475 kVA

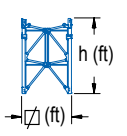
Opcional / Optional / En option / Kaufoption / Opzionale / Опционально
*

ALTURAS BAJO GANCHO

Heights under hook / Hauteurs sous crochet / Hakenhöhen / Altezza sotto gancio / Высота под крюком

∅ 13.1 ft

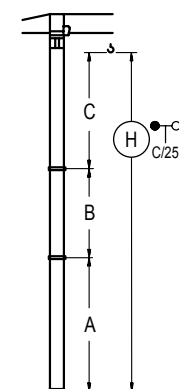


	n°	Ref.	∅	h
	1	D55	13.1	18.0
	2	D56	13.1	18.0

Z máx.	En servicio / In operation / En service / In Betrieb / In servizio / При работе	10CR65-A...500 kip 10CR85510 kip
	Fuera de servicio / Out of service / Hors service / Ausser Betrieb / Fuori servizio / В стационарном состоянии	10CR65-A...467 kip 10CR85683 kip

GRÚA ARRIOSTRADA

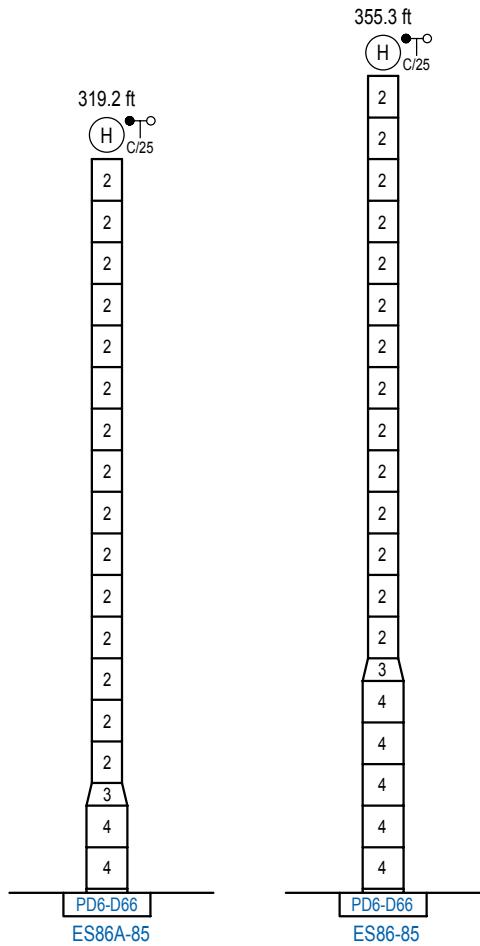
Braced crane / Grue à entretoisement / Abgespannter Kran / Gru ancorata / Нарастиваемый кран



	10CA65-A	10CA85
A max	196.9	214.9
A min	106.6	106.6
B max	108.3	162.4
B min	72.2	72.2
C max	165.0	219.2
H max	470.1	596.5

	ES65-A	ES85
A max	162.4	234.6
A min	72.2	108.3
B max	108.3	162.4
B min	72.2	72.2
C max	165.0	219.2
H max	435.7	616.1

Otras zonas de viento o alturas superiores consultar / Other wind zones or additional hook heights on request / Autres zones de vent ou des hauteurs supplémentaires sur demande / Andere Windzonen oder weitere Hakenhöhen auf Anfrage / Per zone con velocità del vento particolari o altezze superiori consultare il fabbricante / При других ветренных зонах о при большой высоте проконсультируйтесь с нами



	n°	Ref.	∅	h	n°	Ref.	∅	h
		2	D56	13.1	18.0	3	TD66D56	17.7
					4	D66	17.7	18.0

Otras zonas de viento o alturas superiores consultar / Other wind zones or additional hook heights on request / Autres zones de vent ou des hauteurs supplémentaires sur demande / Andere Windzonen oder weitere Hakenhöhen auf Anfrage / Per zone con velocità del vento particolari o altezze superiori consultare il fabbricante / При других ветренных зонах о при большой высоте проконсультируйтесь с нами

3000 Series