

3000 Series

DIAGRAMA DE CARGAS

Load chart / Diagramme de charges / Lastdiagramm / Diagramma di carico / Диаграмма распределения нагрузки

R (ft)																		
262.5	125.0 70,550	131.2 66,650	141.1 61,130	147.6 57,890	157.5 53,550	164.0 50,970	173.9 47,470	180.4 45,350	190.3 42,460	196.9 40,700	203.4 39,040	213.3 36,770	219.8 35,380	220.5 35,270	248.0 35,270	255.9 34,040	262.5 33,070	ft lb
229.7				146.3 70,550	157.5 64,620	164.0 61,570	173.9 57,450	180.4 54,940	190.3 51,540	196.9 49,470	203.4 47,530	213.3 44,860	223.1 42,420	225.4 41,890				ft lb
196.9						164.0 70,550	173.9 65,920	180.4 63,100	190.3 59,260	192.6 58,420								ft lb
164.0							159.8 70,550											ft lb
131.2		127.0 70,550																ft lb

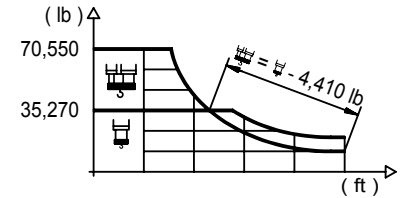
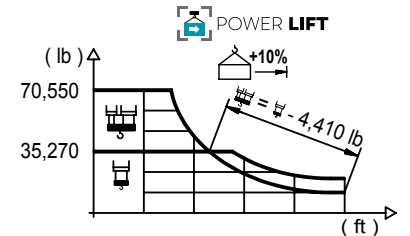


DIAGRAMA DE CARGAS POWERLIFT

Load chart PowerLift / Diagramme de charges PowerLift / Lastdiagramm PowerLift / Diagramma di carico PowerLift / Диаграмма распределения нагрузки PowerLift

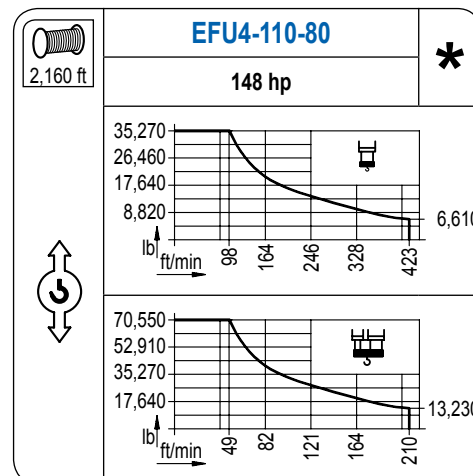
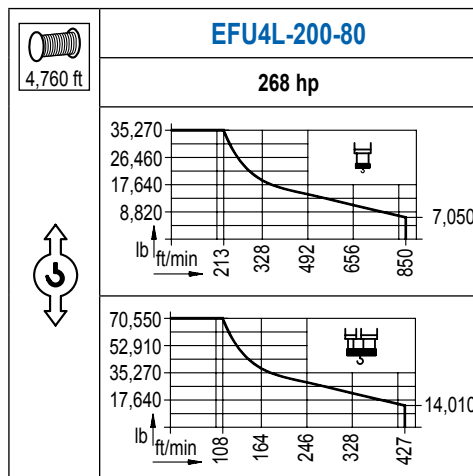
R (ft)																		
262.5	134.2 70,550	141.1 66,490	147.6 63,010	157.5 58,330	164.0 55,560	173.9 51,760	180.4 49,490	190.3 46,380	196.9 44,490	206.7 41,870	213.3 40,260	223.1 38,050	229.7 36,660	232.9 36,000	236.9 35,270	262.5 35,270	ft lb	
229.7				157.8 70,550	164.0 67,390	173.9 62,920	180.4 60,210	190.3 56,530	196.9 54,280	206.7 51,190	213.3 49,290	223.1 46,650	225.4 46,080					ft lb
196.9						177.8 70,550	180.4 69,360	190.3 65,170	192.6 64,260									ft lb
164.0							159.8 70,550											ft lb
131.2		127.0 70,550																ft lb



3000 Series


MECANISMOS

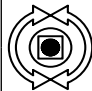
Mechanisms / Mécanismes / Antriebe / Meccanismi / Механизмы

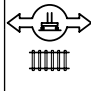


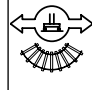
MECANISMOS

Mechanisms / Mécanismes / Antriebe / Meccanismi / Механизмы

	CFU-18
	24 hp
0 ⇔ 295 ft/min	

	GFU-15
	4x 20 hp
0 ⇔ 0,7 rpm	

	TRA-12
	4x 88 ft-lb
	78 ft/min
	10CR85

	TRA-12VC
	4x 88 ft-lb
	78 ft/min
	10CR85

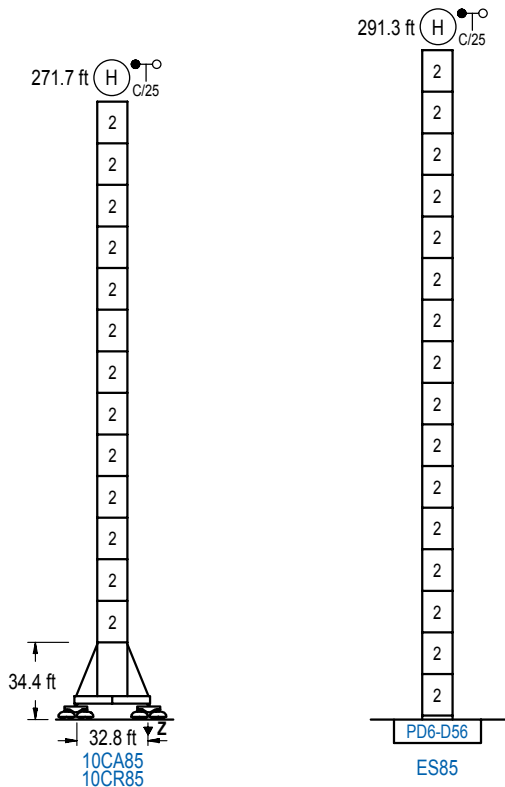
POTENCIA / POWER / PUISSANCE / LEISTUNG / POTENZA / МОЩНОСТЬ				Tensión de alimentación / Operating voltage / Tension de service / Betriebsspannung / Tensione di alimentazione / Напряжение источника питания	Generator / Generator / Générateur / Generator / Generatore / Генератор
Elevación / Hoist / Levage / Hub / Sollevamento / Тип механизма (подъем)	Carro / Trolley / Chariot / Laufkatze / Carrolo / Грузовая тележка	Giro / Slewing / Rotation / Drehbewegung / Rotazione / Поворот	Traslación / Travel / Translation / Verfahrbewegung / Traslazione / Ход		
EFU4L-200-80	CFU-18	(4x) GFU-15	(4x) TRA-12	480 V 3ph 60 Hz	475 kVA

Opcional / Optional / En option / Kaufoption / Opzionale / Опционально
*

ALTURAS BAJO GANCHO

Heights under hook / Hauteurs sous crochet / Hakenhöhen / Altezza sotto gancio / Высота под крюком

∅ 13.1 ft

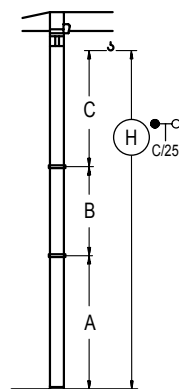


n°	Ref.	∅	h
2	D56	13.1	18.0

Z máx.	En servicio / In operation / En service / In Betrieb / In servizio / При работе	10CR85 ...595 kip
	Fuera de servicio / Out of service / Hors service / Ausser Betrieb / Fuori servizio / В стационарном состоянии	10CR85 ...710 kip

GRÚA ARRIOSTRADA

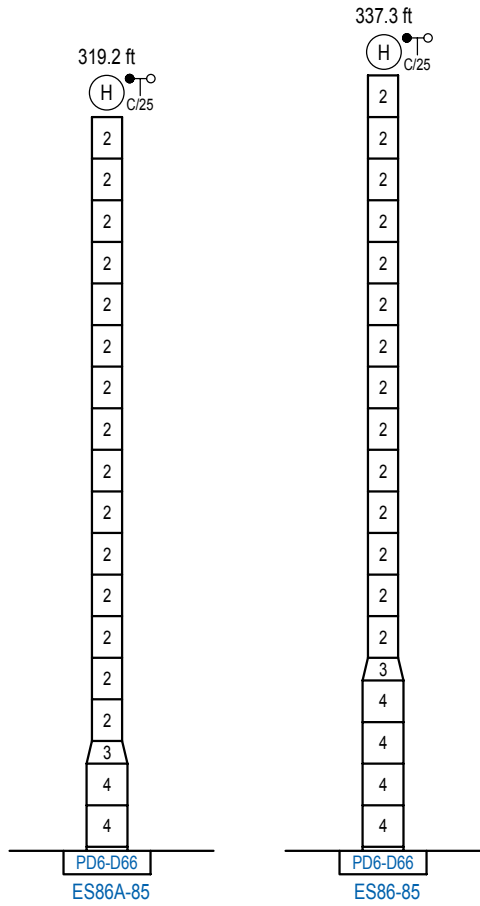
Braced crane / Grue à entretoisement / Abgespannter Kran / Gru ancorata / Нарастиваемый кран

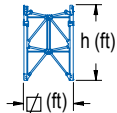


10CA85	
A max	214.9 124.7
B max	- 162.4 90.2
C max	219.2 219.2
H max	434.1 596.5

ES85	
A max	234.6 126.3
B max	- 162.4 90.2
C max	219.2 219.2
H max	453.7 616.1

Otras zonas de viento o alturas superiores consultar / Other wind zones or additional hook heights on request / Autres zones de vent ou des hauteurs supplémentaires sur demande / Andere Windzonen oder weitere Hakenhöhen auf Anfrage / Per zone con velocità del vento particolari o altezze superiori consultare il fabbricante / При других ветренных зонах о при большой высоте проконсультируйтесь с нами



	n°	Ref.	∅	h	n°	Ref.	∅	h
		2	D56	13.1	18.0	3	TD66D56	17.7
					4	D66	17.7	18.0

Otras zonas de viento o alturas superiores consultar / Other wind zones or additional hook heights on request / Autres zones de vent ou des hauteurs supplémentaires sur demande / Andere Windzonen oder weitere Hakenhöhen auf Anfrage / Per zone con velocità del vento particolari o altezze superiori consultare il fabbricante / При других ветренных зонах о при большой высоте проконсультируйтесь с нами

3000 Series