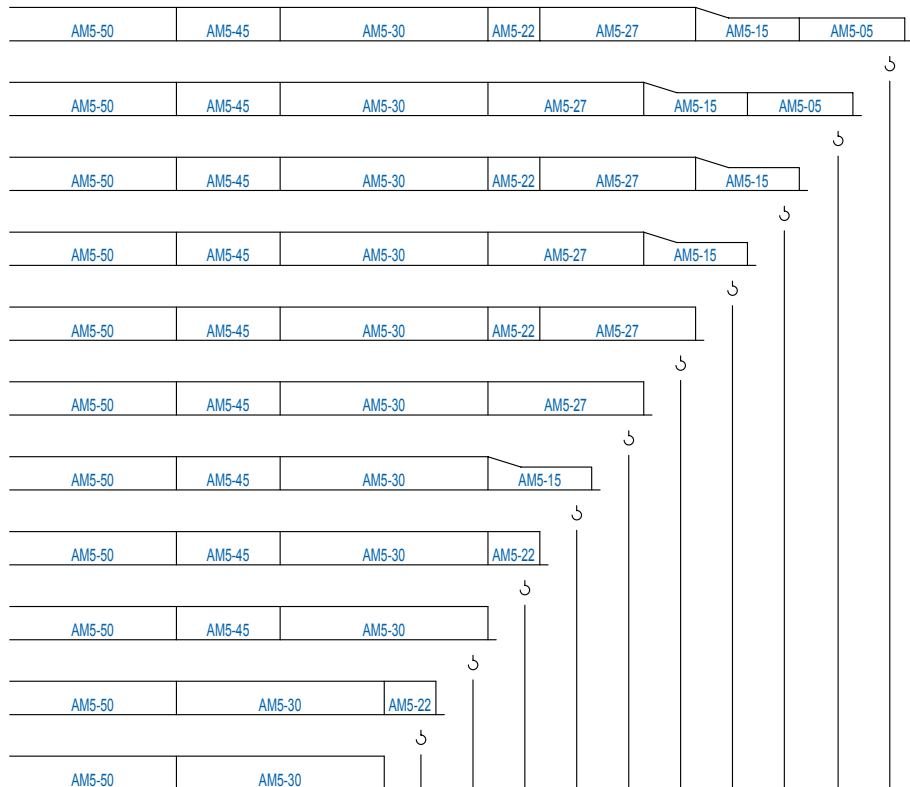
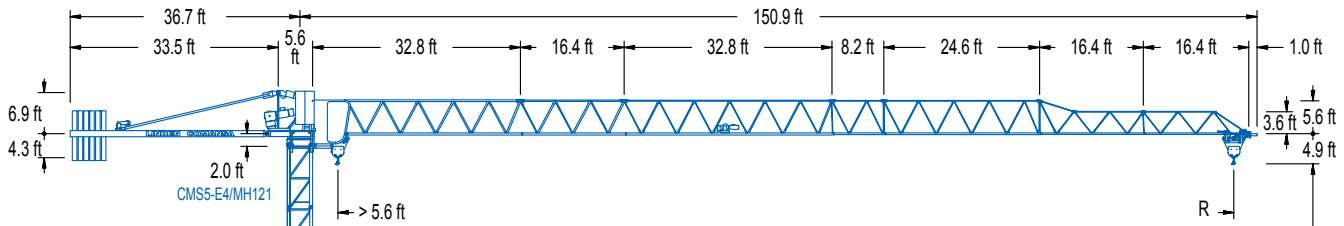
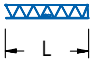


500 Series

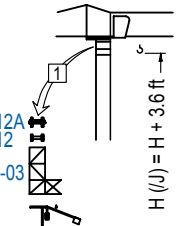
5 LC 4510

11,020 lb



*  L

AM5-50 = AM5-55T + AM5-55D
 AM5-30 = AM5-35T + AM5-35D

*  H (U) = H + 3.6 ft

1 Montaje inicial / Initial erection
 Montage initial / Erstmontage
 Montaggio iniziale
 Первоначальный монтаж

(U) = H - 1.6 ft

R	65.6	73.8	82.0	90.2	98.4	106.6	114.8	123.0	131.2	139.4	147.6	ft
POWER LIFT	5,510	5,510	5,510	5,510	4,850	4,370	3,880	3,640	3,020	2,670	2,430	lb
POWER LIFT	7,280	6,370	5,820	5,200	4,610	4,120	3,640	3,400	2,760	2,430	2,180	lb
	6,610	5,730	5,290	4,740	4,190	3,750	3,310	3,090	2,540	2,200	1,980	lb

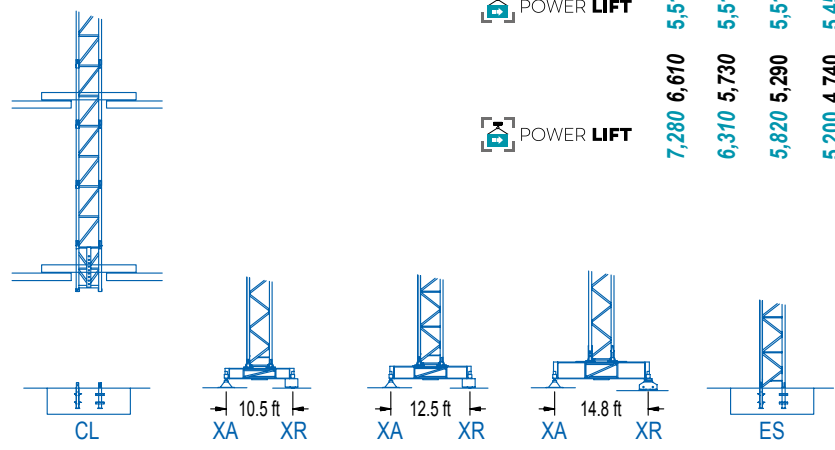
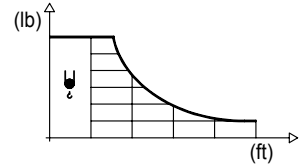


DIAGRAMA DE CARGAS

Load chart / Diagramme de charges / Lastdiagramm / Diagramma di carico / Диаграмма распределения нагрузки

R (ft)	ψ	RC _{max} (ft)	32.8	41.0	49.2	57.4	65.6	73.8	82.0	90.2	98.4	106.6	114.8	123.0	131.2	139.4	147.6	↔ (ft) ↓ (lb)
147.6		67.6					5,510	4,980	4,410	3,970	3,570	3,260	3,000	2,760	2,540	2,360	2,200	
139.4		68.9					5,510	5,090	4,520	4,060	3,660	3,350	3,060	2,820	2,600	2,430		
131.2		71.9					5,510	5,360	4,760	4,280	3,860	3,530	3,220	2,980	2,760			
123.0		78.7						5,510	5,250	4,720	4,280	3,900	3,660	3,310				
114.8		77.8						5,510	5,180	4,650	4,210	3,840	3,530					
106.6		79.7						5,510	5,340	4,810	4,340	3,970						
98.4		80.7						5,510	5,420	4,870	4,410							
90.2		82.0							5,510	4,960								
82.0		82.0							5,510									
73.8		73.8						5,510										
65.6		65.6					5,510											



R (ft)	ψ/ψ _ψ	RC _{max} (ft)	32.8	41.0	49.2	57.4	65.6	73.8	82.0	90.2	98.4	106.6	114.8	123.0	131.2	139.4	147.6	↔ (ft) ↓ (lb)
147.6		36.4	11,020	9,610	7,780	6,500	5,580	4,850	4,250	3,790	3,400	3,060	2,800	2,560	2,340	2,160	1,980	
139.4		37.1	11,020	9,790	7,960	6,660	5,690	4,940	4,370	3,880	3,480	3,150	2,870	2,600	2,400	2,200		
131.2		38.4	11,020	10,270	8,330	6,990	5,970	5,200	4,590	4,080	3,660	3,310	3,020	2,760	2,540			
123.0		42.0	11,020	9,170	7,690	6,590	5,750	5,070	4,520	4,080	3,700	3,370	3,090					
114.8		41.3	11,020	9,020	7,560	6,480	5,640	4,980	4,450	4,010	3,640	3,310						
106.6		42.3	11,020	9,280	7,780	6,680	5,820	5,140	4,590	4,140	3,750							
98.4		42.7	11,020	9,410	7,890	6,770	5,910	5,200	4,650	4,190								
90.2		43.3	11,020	9,570	8,020	6,880	6,000	5,310	4,740									
82.0		43.3	11,020	9,550	8,000	6,860	6,000	5,290										
73.8		41.7	11,020	9,150	7,670	6,570	5,730											
65.6		42.0	11,020	9,190	7,720	6,610												

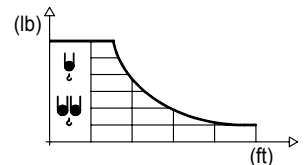
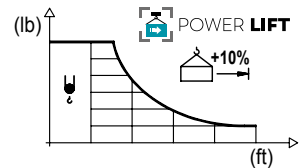


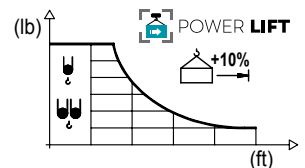
DIAGRAMA DE CARGAS POWERLIFT

Load chart PowerLift / Diagramme de charges PowerLift / Lastdiagramm PowerLift / Diagramma di carico PowerLift / Диаграмма распределения нагрузки PowerLift

R (ft)	ψ	RC _{max} (ft)	32.8	41.0	49.2	57.4	65.6	73.8	82.0	90.2	98.4	106.6	114.8	123.0	131.2	139.4	147.6	↔ (ft) ↓ (lb)
147.6		72.8					5,510	5,420	4,830	4,320	3,920	3,570	3,260	3,020	2,800	2,600	2,430	
139.4		74.4						5,510	4,940	4,430	4,010	3,660	3,350	3,090	2,870	2,670		
131.2		77.7						5,510	5,180	4,650	4,210	3,840	3,530	3,260	3,020			
123.0		85.3							5,510	5,180	4,700	4,280	3,950	3,640				
114.8		84.2							5,510	5,090	4,630	4,230	3,880					
106.6		86.7							5,510	5,270	4,780	4,370						
98.4		87.8							5,510	5,360	4,850							
90.2		89.2							5,510	5,450								
82.0		82.0							5,510									
73.8		73.8						5,510										
65.6		65.6					5,510											



R (ft)	ψ/ψ _ψ	RC _{max} (ft)	32.8	41.0	49.2	57.4	65.6	73.8	82.0	90.2	98.4	106.6	114.8	123.0	131.2	139.4	147.6	↔ (ft) ↓ (lb)
147.6		38.8	11,020	10,340	8,400	7,030	6,020	5,250	4,630	4,120	3,700	3,350	3,040	2,780	2,560	2,360	2,180	
139.4		39.6	11,020	10,580	8,600	7,190	6,170	5,380	4,740	4,210	3,790	3,440	3,130	2,870	2,620	2,430		
131.2		41.2	11,020	8,990	7,540	6,460	5,640	4,980	4,430	3,990	3,620	3,310	3,020	2,780				
123.0		45.0	11,020	9,960	8,380	7,190	6,260	5,560	4,960	4,450	4,060	3,700	3,400					
114.8		44.4	11,020	9,810	8,250	7,080	6,170	5,470	4,870	4,390	3,990	3,640						
106.6		45.6	11,020	10,120	8,510	7,300	6,370	5,640	5,030	4,540	4,120							
98.4		46.2	11,020	10,270	8,620	7,410	6,460	5,710	5,110	4,610								
90.2		46.9	11,020	10,430	8,770	7,540	6,570	5,820	5,200									
82.0		46.9	11,020	10,430	8,800	7,540	6,570	5,820										
73.8		45.2	11,020	10,030	8,420	7,230	6,310											
65.6		45.5	11,020	10,100	8,470	7,280												



MECANISMOS

Mechanisms / Mécanismes / Antriebe / Meccanismi / Механизмы

ES3-18-12
820 ft
29 hp

	I	II	III
ft/min	32	126	252
lb	5,510	5,510	2,870

	I	II	III
ft/min	16	63	126
lb	11,020	11,020	5,730

ES3-13-12
740 ft
21 hp

	I	II	III
ft/min	24	94	189
lb	5,510	2,500	2,870

	I	II	III
ft/min	12	47	94
lb	11,020	11,020	5,730

EFU2-18-12
820 ft
24 hp

ft/min	lb
138	5,510
164	4,410
197	3,310
243	2,200

ft/min	lb
88	11,020
82	8,820
88	6,610
121	4,410

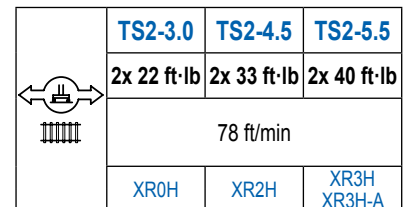
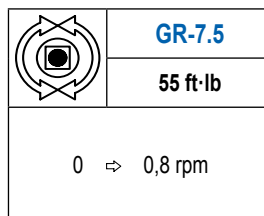
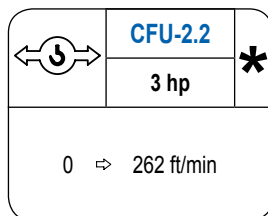
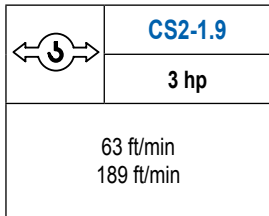
EFU2-11-12
740 ft
15 hp

ft/min	lb
79	5,510
88	4,410
131	3,310
164	2,200
190	2,200

ft/min	lb
88	11,020
49	8,820
86	6,610
82	4,410
85	4,410

MECANISMOS

Mechanisms / Mécanismes / Antriebe / Meccanismi / Механизмы



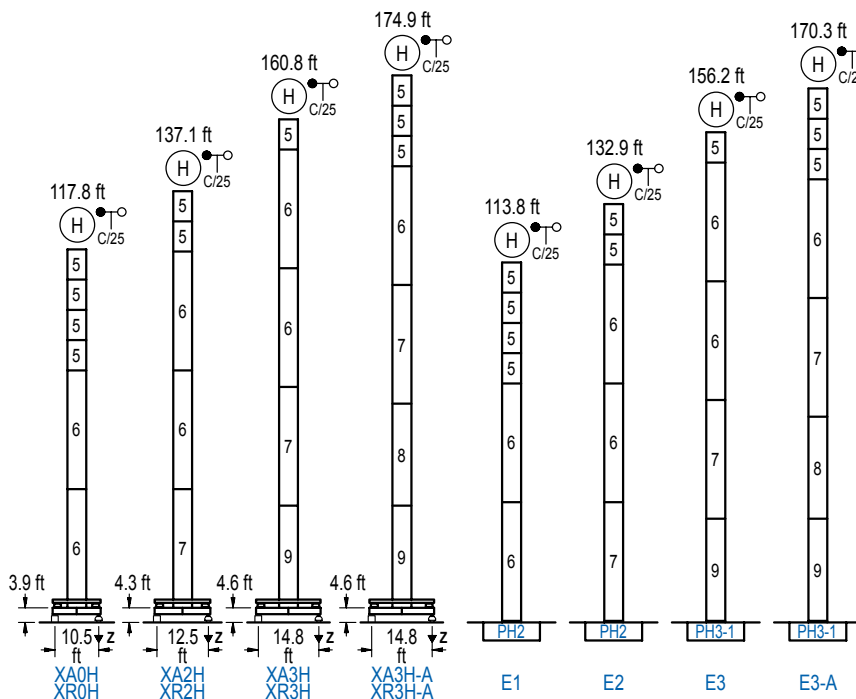
POTENCIA / POWER / PUISSANCE / LEISTUNG / POTENZA / МОЩНОСТЬ				Tensión de alimentación / Operating voltage / Tension de service / Betriebsspannung / Tensione di alimentazione / Напряжение источника питания	Generador / Generator / Générateur / Generator / Generatore / Генератор
Elevación / Hoist / Levage / Hub / Sollevamento / Тип механизма (подъем)	Carro / Trolley / Chariot / Laufkatze / Carrello / Грузовая тележка	Giro / Slewing / Rotation / Drehbewegung / Rotazione / Поворот	Traslación / Travel / Translation / Verfahrbewegung / Traslazione / Ход	480 V 3ph 60 Hz	107 kVA 90 kVA 60 kVA 48 kVA
ES3-18-12	CS2-1.9	GR-7.5	(2x) TS2-3.0		
ES3-13-12			(2x) TS2-4.5		
EFU2-18-12	CFU-2.2	GR-7.5	(2x) TS2-5.5		
EFU2-11-12					

Opcional / Optional / En option / Kaufoption / Opzionale / Опционально

ALTURAS BAJO GANCHO

Heights under hook / Hauteurs sous crochet / Hakenhöhen / Altezza sotto gancio / Высота под крюком

∅ 39 ft



n°	Ref.	∅	h
5	MH121	3.9	9.8
6	MH124-1	3.9	38.7
7	MH124A	3.9	38.7
8	MT123A	3.9	33.1
9	MT123	3.9	33.1

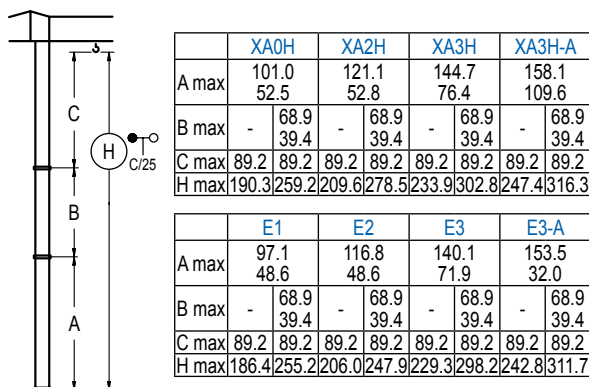
MH124-1 = 4x MH121 - 0.7 ft

H = H + 0.7 ft
 H = H
 H = H - 0.7 ft

Z máx.	En servicio / In operation / En service / In Betrieb / In servizio / При работе	XR0H..... 95 kip XR2H..... 93 kip XR3H..... 101 kip XR3H-A.. 112 kip
	Fuera de servicio / Out of service / Hors service / Ausser Betrieb / Fuori servizio / В стационарном состоянии	XR0H..... 110 kip XR2H..... 137 kip XR3H..... 159 kip XR3H-A.. 187 kip

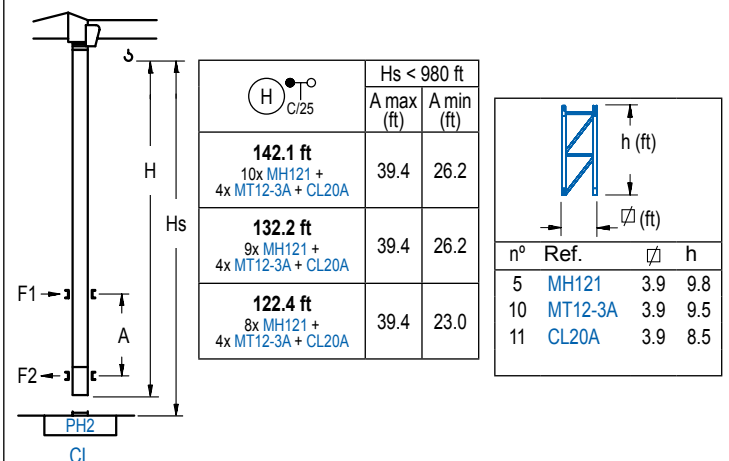
GRÚA ARRIOSTRADA

Braced crane / Grue à entretoisement / Abgespannter Kran / Gru ancorata / Нарастиваемый кран

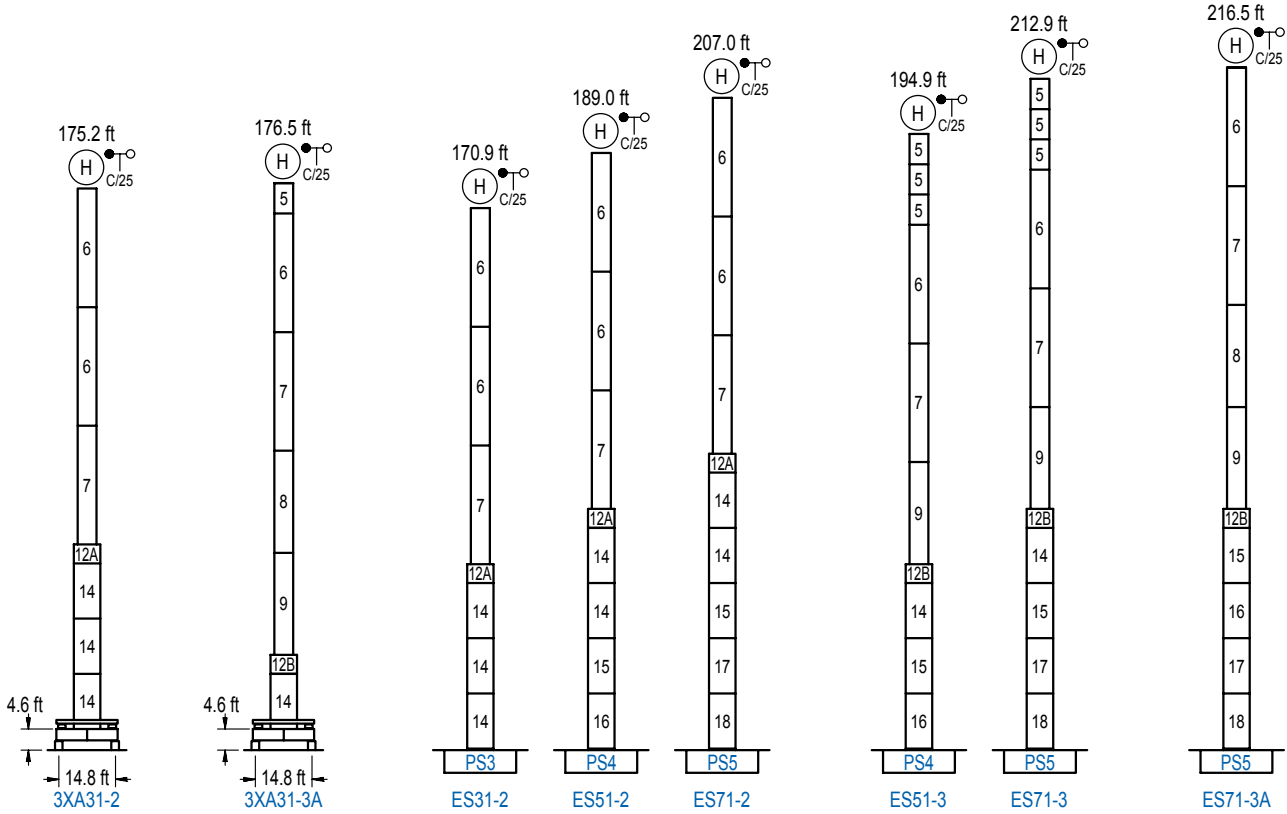


GRÚA TREPADORA

Internal climbing crane / Grue avec cage de télescopage intérieure / Kran mit klettern im Gebäude / Gru in rampante in cavedio / Кран с самоподъемом



Otras zonas de viento, alturas superiores, arriostramientos o trepado interno consultar / Other wind zones, additional hook heights, tie frames or internal climbing on request / Autres zones de vent, des hauteurs supplémentaires, entretoisements ou grues avec cage de télescopage intérieure, sur demande / Andere Windzonen, weitere Hakenhöhen, Abspannungen zum Gebäude oder Klettern im Gebäude auf Anfrage / Per zone con velocità del vento particolari, altezze superiori, ancoraggi o rampante in cavedio, consultare il fabbricante / При других ветренных зонах, при большой высоте, привязках к зданию или наращивании крана внутри здания проконсультируйтесь с нами



n°	Ref.	∅	h	n°	Ref.	∅	h	n°	Ref.	∅	h
1	MH111	3.9	9.8	12A	TMS13/PMH12	5.2	3.3	16	S14	5.2	18.0
2	MH114	3.9	38.7	12B	TMS13/PMH13	5.2	3.3	17	TS15	5.2	18.0
3	MH114A	3.9	38.7	14	S13	5.2	18.0	18	S15	5.2	18.0
7	MH124A	3.9	38.7	15	TS14	5.2	18.0				
9	MT123	3.9	33.1								
MH114 = 4x MH111 - 0.7 ft				1x S13 = 1x S13M				1x S15 = 1x S15M			

Otras zonas de viento o alturas superiores consultar / Other wind zones or additional hook heights on request / Autres zones de vent ou des hauteurs supplémentaires sur demande / Andere Windzonen oder weitere Hakenhöhen auf Anfrage / Per zone con velocità del vento particolari o altezze superiori consultare il fabbricante / При других ветренных зонах о при большой высоте проконсультируйтесь с нами