

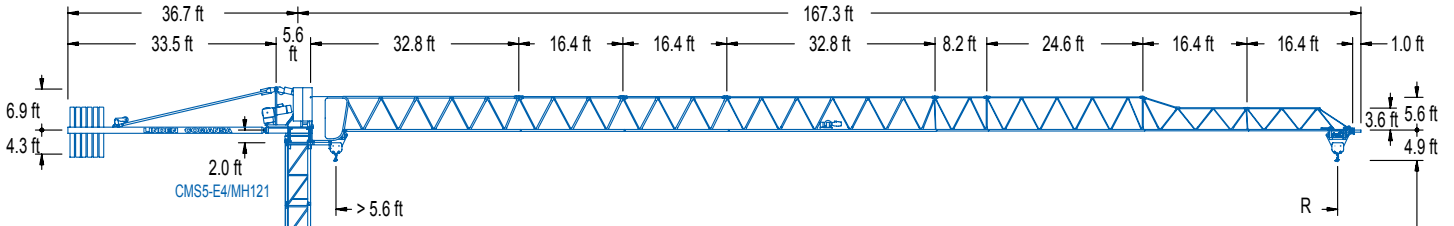


COMANSA

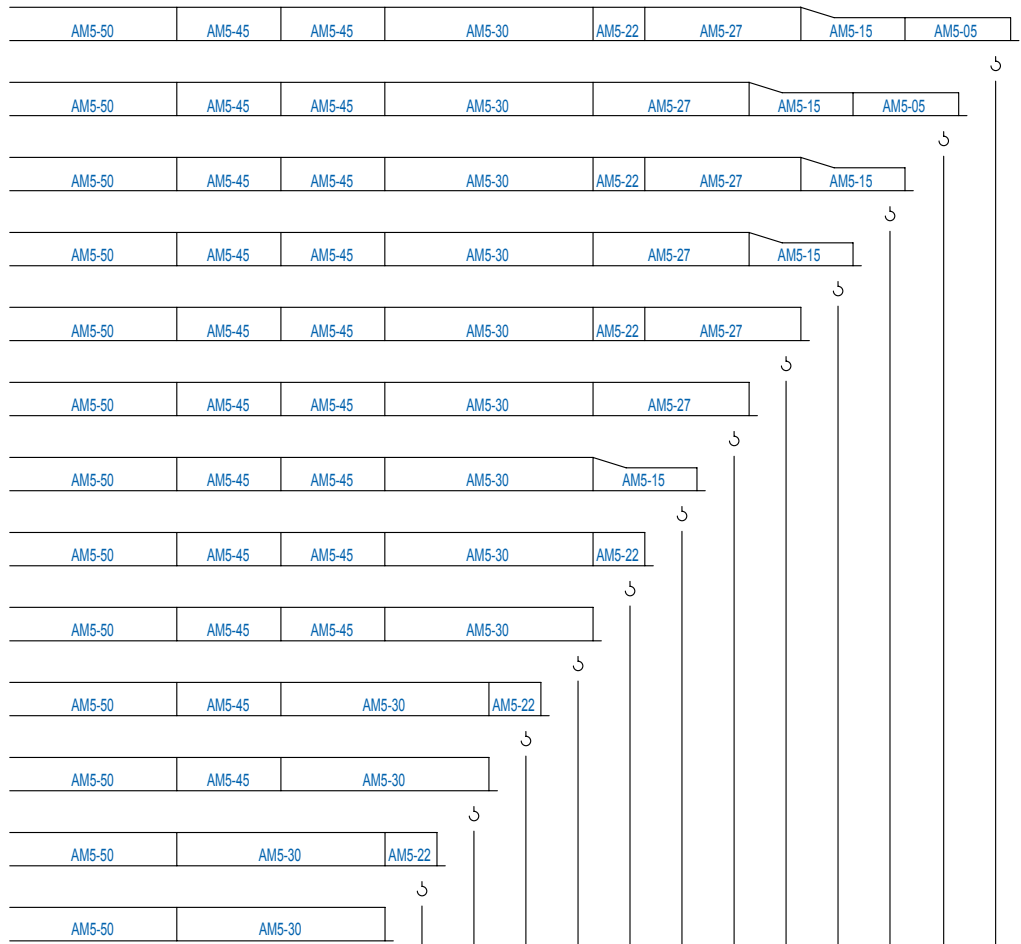
500 Series

5 LC 5010

8,820 lb



500 Series



* L

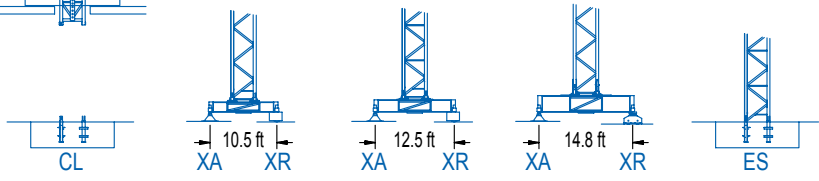
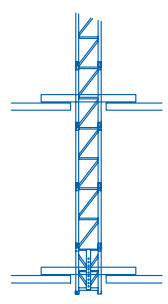
AM5-50 = AM5-55T + AM5-55D
 AM5-30 = AM5-35T + AM5-35D

* H (U) = H + 3.6 ft

1 Montaje inicial / Initial erection
 Montage initial / Erstmontage
 Montaggio iniziale
 Первоначальный монтаж

(H) (U) = H + 1.6 ft

R	65.6	73.8	82.0	90.2	98.4	106.6	114.8	123.0	131.2	139.4	147.6	155.8	164.0	ft
POWER LIFT	4,410	4,410	4,410	4,410	4,410	4,410	4,410	4,230	3,880	3,640	2,910	2,670	2,430	lb
POWER LIFT	8,820	8,270	7,030	6,310	5,690	5,090	4,610	3,990	3,640	3,400	2,670	2,430	2,180	lb



CE EN 14439 (C/25)

DIAGRAMA DE CARGAS

Load chart / Diagramme de charges / Lastdiagramm / Diagramma di carico / Диаграмма распределения нагрузки

R (ft) ↓ / ψ	RCmax (ft)	41.0	49.2	57.4	65.6	73.8	82.0	90.2	98.4	106.6	114.8	123.0	131.2	139.4	147.6	155.8	164.0	⇄ (ft) ↓ (lb)
164.0	91.2							4,410	4,030	3,680	3,370	3,110	2,890	2,690	2,510	2,340	2,200	
155.8	93.5							4,410	4,170	3,790	3,480	3,220	2,980	2,780	2,580	2,430		
147.6	95.1							4,410	4,250	3,880	3,550	3,280	3,040	2,820	2,650			
139.4	108.6									4,410	4,140	3,810	3,550	3,310				
131.2	107.9									4,410	4,100	3,790	3,530					
123.0	109.6									4,410	4,170	3,860						
114.8	114.8										4,410							
106.6	106.6											4,410						
98.4	98.4												4,410					
90.2	90.2													4,410				
82.0	82.0						4,410											
73.8	73.8				4,410													
65.6	65.6			4,410														

R (ft) ↓ / ψ / ψ	RCmax (ft)	41.0	49.2	57.4	65.6	73.8	82.0	90.2	98.4	106.6	114.8	123.0	131.2	139.4	147.6	155.8	164.0	⇄ (ft) ↓ (lb)
164.0	48.9	8,820	8,750	7,340	6,280	5,470	4,830	4,300	3,880	3,510	3,200	2,930	2,690	2,470	2,290	2,140	1,980	
155.8	50.2	8,820	7,540	6,460	5,620	4,980	4,430	3,990	3,620	3,280	3,020	2,780	2,560	2,380	2,200			
147.6	50.9	8,820	7,670	6,570	5,730	5,070	4,520	4,060	3,680	3,350	3,090	2,820	2,620	2,430				
139.4	57.4		8,820	7,610	6,640	5,860	5,250	4,740	4,300	3,920	3,620	3,330	3,090					
131.2	57.1	8,820	8,770	7,540	6,590	5,820	5,200	4,700	4,280	3,900	3,590	3,310						
123.0	57.7		8,820	7,650	6,680	5,910	5,290	4,760	4,320	3,970	3,640							
114.8	60.7		8,820	8,050	7,030	6,240	5,580	5,030	4,590	4,190								
106.6	61.0		8,820	8,130	7,120	6,310	5,640	5,090	4,630									
98.4	62.0		8,820	8,270	7,230	6,420	5,730	5,180										
90.2	62.0		8,820	8,270	7,230	6,390	5,730											
82.0	62.0		8,820	8,250	7,210	6,390												
73.8	62.3		8,820	8,310	7,280													
65.6	62.0		8,820	8,270														

DIAGRAMA DE CARGAS POWERLIFT

Load chart PowerLift / Diagramme de charges PowerLift / Lastdiagramm PowerLift / Diagramma di carico PowerLift / Диаграмма распределения нагрузки PowerLift

R (ft) ↓ / ψ	RCmax (ft)	41.0	49.2	57.4	65.6	73.8	82.0	90.2	98.4	106.6	114.8	123.0	131.2	139.4	147.6	155.8	164.0	⇄ (ft) ↓ (lb)
164.0	98.4								4,410	4,030	3,700	3,420	3,170	2,950	2,760	2,580	2,430	
155.8	101.4								4,410	4,140	3,810	3,530	3,260	3,040	2,840	2,670		
147.6	103.0								4,410	4,230	3,900	3,590	3,350	3,110	2,910			
139.4	117.8										4,410	4,190	3,900	3,640				
131.2	117.5										4,410	4,190	3,880					
123.0	118.8										4,410	4,230						
114.8	114.8											4,410						
106.6	106.6												4,410					
98.4	98.4													4,410				
90.2	90.2														4,410			
82.0	82.0						4,410											
73.8	73.8				4,410													
65.6	65.6			4,410														

R (ft) ↓ / ψ / ψ	RCmax (ft)	41.0	49.2	57.4	65.6	73.8	82.0	90.2	98.4	106.6	114.8	123.0	131.2	139.4	147.6	155.8	164.0	⇄ (ft) ↓ (lb)
164.0	52.2	8,820	7,910	6,790	5,930	5,220	4,670	4,210	3,810	3,480	3,200	2,930	2,710	2,510	2,340	2,180		
155.8	53.5	8,820	8,160	6,990	6,110	5,400	4,830	4,340	3,950	3,590	3,310	3,040	2,800	2,600	2,430			
147.6	54.5	8,820	8,310	7,140	6,220	5,510	4,920	4,430	4,010	3,680	3,370	3,110	2,870	2,670				
139.4	62.0		8,820	8,270	7,230	6,390	5,730	5,180	4,720	4,300	3,970	3,660	3,400					
131.2	61.7		8,820	8,220	7,190	6,370	5,690	5,140	4,670	4,280	3,950	3,640						
123.0	62.3		8,820	8,310	7,280	6,440	5,780	5,200	4,740	4,340	3,990							
114.8	65.6		8,820	8,800	7,690	6,830	6,110	5,530	5,030	4,610								
106.6	66.3		8,820	8,820	7,780	6,900	6,190	5,600	5,090									
98.4	67.3		8,820	8,820	7,910	7,010	6,280	5,690										
90.2	67.3		8,820	8,820	7,940	7,030	6,310											
82.0	67.3		8,820	8,820	7,940	7,030												
73.8	67.9		8,820	8,820	8,000													
65.6	65.6		8,820	8,820														

MECANISMOS

Mechanisms / Mécanismes / Antriebe / Meccanismi / Механизмы

ES3-13-10
740 ft | 21 hp

		I	II	III
ft/min		30	118	236
	lb	4,410	4,410	2,425

		I	II	III
ft/min		15	59	118
	lb	8,820	8,820	4,850

ES3-18-10 *

820 ft | 29 hp

		I	II	III
ft/min		39	150	299
	lb	4,410	4,410	2,425

		I	II	III
ft/min		20	75	150
	lb	8,820	8,820	4,850

EFU2-11-10 *

740 ft | 15 hp

		I	II	III
ft/min		98	131	197
	lb	4,410	3,310	2,200

		I	II	III
ft/min		49	66	99
	lb	8,820	6,610	4,410

EFU2-18-10 *

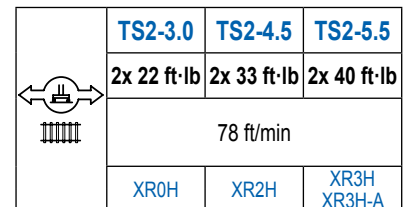
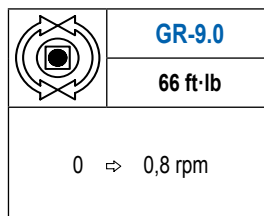
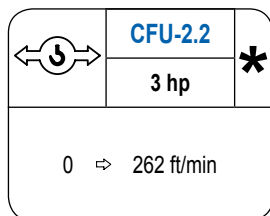
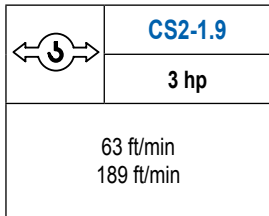
820 ft | 24 hp

		I	II	III
ft/min		177	197	230
	lb	4,410	3,310	2,200

		I	II	III
ft/min		89	115	131
	lb	8,820	6,610	4,410

MECANISMOS

Mechanisms / Mécanismes / Antriebe / Meccanismi / Механизмы



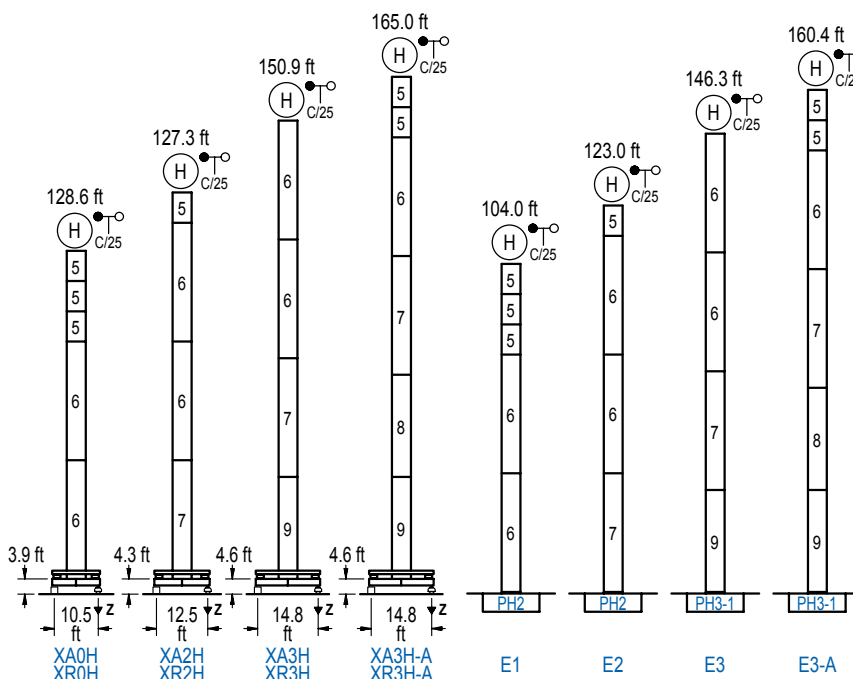
POTENCIA / POWER / PUISSANCE / LEISTUNG / POTENZA / МОЩНОСТЬ				Tensión de alimentación / Operating voltage / Tension de service / Betriebsspannung / Tensione di alimentazione / Напряжение источника питания	Generador / Generator / Générateur / Generator / Generatore / Генератор
Elevación / Hoist / Levage / Hub / Sollevamento / Тип механизма (подъем)	Carro / Trolley / Chariot / Laufkatze / Carrello / Грузовая тележка	Giro / Slewing / Rotation / Drehbewegung / Rotazione / Поворот	Traslación / Travel / Translation / Verfahrbewegung / Traslazione / Ход	480 V 3ph 60 Hz	90 kVA 107 kVA 48 kVA 60 kVA
ES3-13-10	CS2-1.9	GR-9.0	(2x) TS2-3.0		
ES3-18-10			(2x) TS2-4.5		
EFU2-11-10	CFU-2.2		(2x) TS2-5.5		
EFU2-18-10					

Opcional / Optional / En option / Kaufoption / Opzionale / Опционально

ALTURAS BAJO GANCHO

Heights under hook / Hauteurs sous crochet / Hakenhöhen / Altezza sotto gancio / Высота под крюком

∅ 3.9 ft



n°	Ref.	∅	h
5	MH121	3.9	9.8
6	MH124-1	3.9	38.7
7	MH124A	3.9	38.7
8	MT123A	3.9	33.1
9	MT123	3.9	33.1

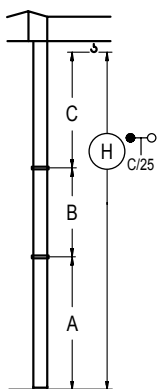
MH124-1 = 4x MH121 - 0.7 ft

H = H + 0.7 ft
 H = H
 H = H
 H = H - 0.7 ft

Z máx.	En servicio / In operation / En service / In Betrieb / In servizio / При работе	XR0H..... 95 kip XR2H..... 93 kip XR3H..... 95 kip XR3H-A... 106 kip
	Fuera de servicio / Out of service / Hors service / Ausser Betrieb / Fuori servizio / В стационарном состоянии	XR0H..... 93 kip XR2H..... 108 kip XR3H..... 141 kip XR3H-A... 168 kip

GRÚA ARRIOSTRADA

Braced crane / Grue à entretoisement / Abgespannter Kran / Gru ancorata / Нарастиваемый кран

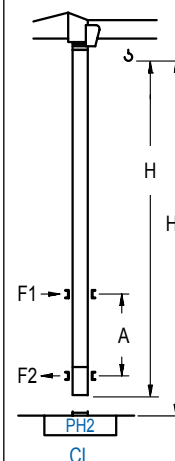


	XA0H	XA2H	XA3H	XA3H-A
A max	91.2 52.5	111.2 52.8	134.8 76.4	148.3 109.6
B max	- 68.9 39.4	- 68.9 39.4	- 68.9 39.4	- 68.9 39.4
C max	89.2	89.2	89.2	89.2
H max	180.4	249.3	200.5	269.4
	224.1	293.0	237.5	306.4

	E1	E2	E3	E3-A
A max	87.3 48.6	107.0 48.6	130.2 71.9	143.7 105.0
B max	- 68.9 39.4	- 68.9 39.4	- 68.9 39.4	- 68.9 39.4
C max	89.2	89.2	89.2	89.2
H max	176.5	245.4	196.2	265.1
	219.5	288.4	232.9	301.8

GRÚA TREPADORA

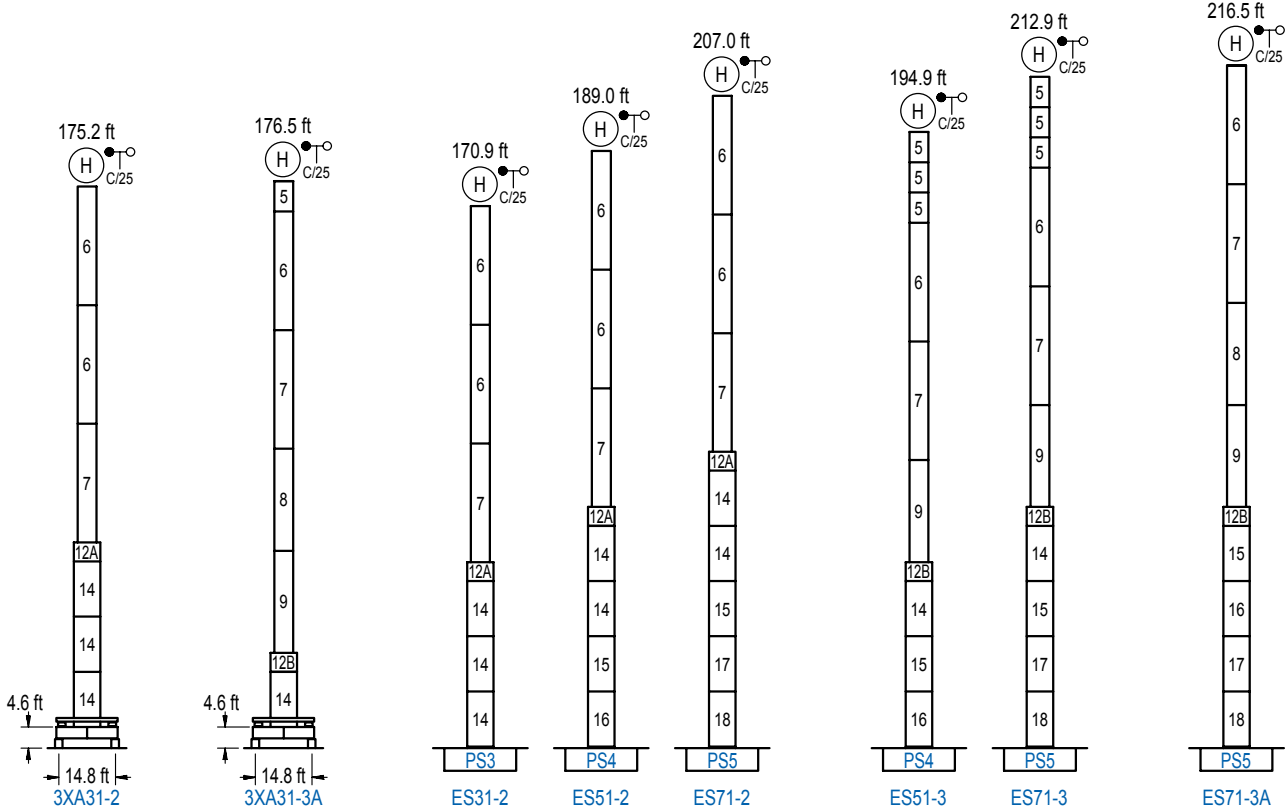
Internal climbing crane / Grue avec cage de télescopage intérieure / Kran mit klettern im Gebäude / Gru in rampante in cavedio / Кран с самоподъемом



	Hs < 980 ft	A max (ft)	A min (ft)
142.1 ft 10x MH121 + 4x MT12-3A + CL20A	39.4	26.2	
132.2 ft 9x MH121 + 4x MT12-3A + CL20A	39.4	26.2	
122.4 ft 8x MH121 + 4x MT12-3A + CL20A	39.4	23.0	

n°	Ref.	∅	h
5	MH121	3.9	9.8
10	MT12-3A	3.9	9.5
11	CL20A	3.9	8.5

Otras zonas de viento, alturas superiores, arriostramientos o trepado interno consultar / Other wind zones, additional hook heights, tie frames or internal climbing on request / Autres zones de vent, des hauteurs supplémentaires, entretoisements ou grues avec cage de télescopage intérieure, sur demande / Andere Windzonen, weitere Hakenhöhen, Abspannungen zum Gebäude oder Klettern im Gebäude auf Anfrage / Per zone con velocità del vento particolari, altezze superiori, ancoraggi o rampante in cavedio, consultare il fabbricante / При других ветренных зонах, при большой высоте, привязках к зданию или наращивании крана внутри здания проконсультируйтесь с нами



n°	Ref.	∅	h	n°	Ref.	∅	h	n°	Ref.	∅	h
1	MH111	3.9	9.8	12A	TMS13/PMH12	5.2	3.3	16	S14	5.2	18.0
2	MH114	3.9	38.7	12B	TMS13/PMH13	5.2	3.3	17	TS15	5.2	18.0
3	MH114A	3.9	38.7	14	S13	5.2	18.0	18	S15	5.2	18.0
7	MH124A	3.9	38.7	15	TS14	5.2	18.0				
9	MT123	3.9	33.1								
MH114 = 4x MH111 - 0.7 ft				1x S13 = 1x S13M				1x S15 = 1x S15M			

Otras zonas de viento o alturas superiores consultar / Other wind zones or additional hook heights on request / Autres zones de vent ou des hauteurs supplémentaires sur demande / Andere Windzonen oder weitere Hakenhöhen auf Anfrage / Per zone con velocità del vento particolari o altezze superiori consultare il fabbricante / При других ветренных зонах о при большой высоте проконсультируйтесь с нами