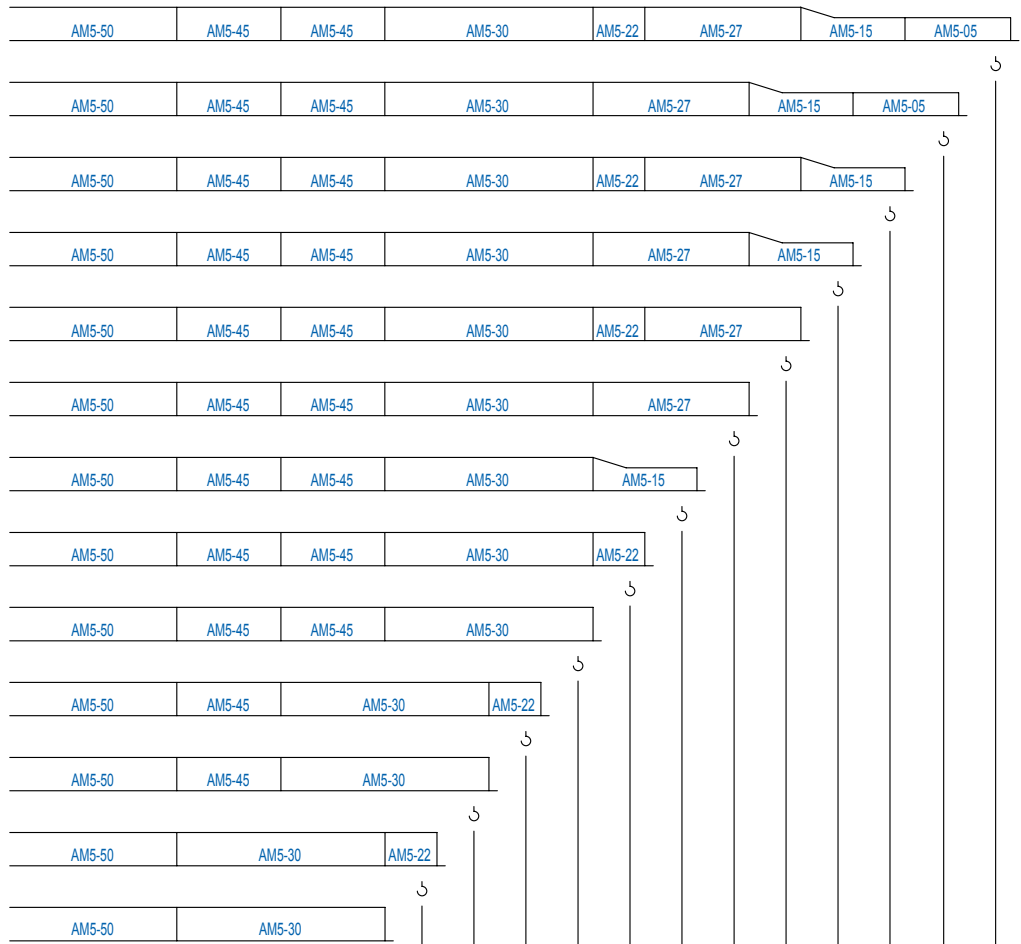
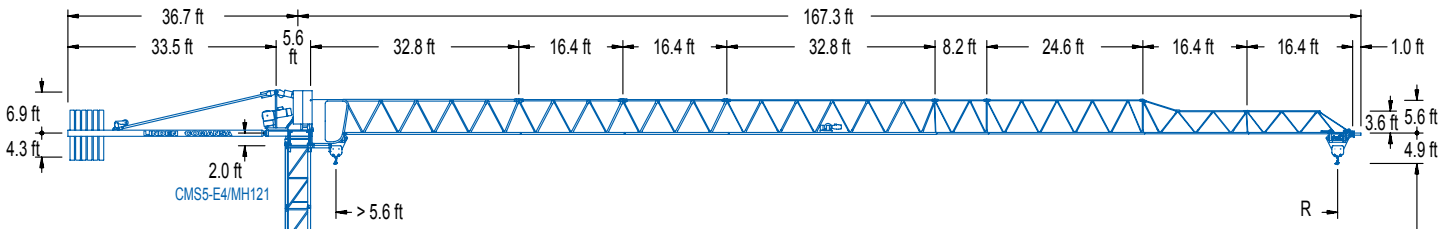



500 Series

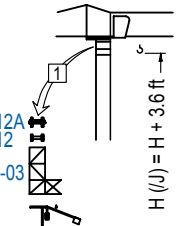
5 LC 5010

11,020 lb



*  L

AM5-50 = AM5-55T + AM5-55D
 AM5-30 = AM5-35T + AM5-35D

*  H (J) = H + 3.6 ft

1 Montaje inicial / Initial erection
 Montage initial / Erstmontage
 Montaggio iniziale
 Первоначальный монтаж

(H) H (J) = H + 1.6 ft

R	65.6	73.8	82.0	90.2	98.4	106.6	114.8	123.0	131.2	139.4	147.6	155.8	164.0	ft
POWER LIFT	5,510	5,510	5,510	5,510	5,510	5,340	4,850	4,230	3,880	3,640	2,910	2,670	2,430	lb
POWER LIFT	9,080	7,280	6,390	5,730	5,180	4,630	4,190	3,990	3,640	3,400	2,670	2,430	2,180	lb

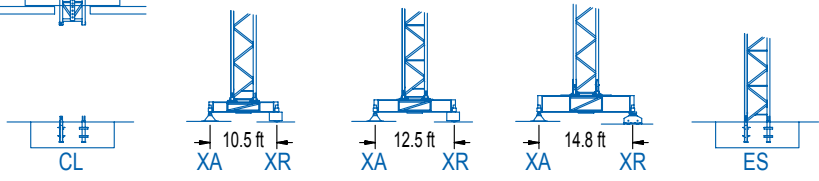
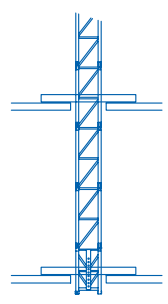
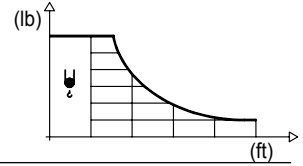


DIAGRAMA DE CARGAS

Load chart / Diagramme de charges / Lastdiagramm / Diagramma di carico / Диаграмма распределения нагрузки

R (ft)	ψ	RCmax (ft)	32.8	41.0	49.2	57.4	65.6	73.8	82.0	90.2	98.4	106.6	114.8	123.0	131.2	139.4	147.6	155.8	164.0	↔ (ft) ↓ (lb)	
164.0	74.8							5,510	4,980	4,450	4,030	3,680	3,370	3,110	2,890	2,690	2,510	2,360	2,200		
155.8	76.8							5,510	5,110	4,610	4,170	3,790	3,480	3,220	2,980	2,780	2,580	2,420			
147.6	78.1							5,510	5,220	4,690	4,250	3,880	3,550	3,280	3,040	2,820	2,640				
139.4	88.9								5,510	5,420	4,910	4,500	4,140	3,810	3,550	3,310					
131.2	88.6								5,510	5,400	480	4,470	4,120	3,790	3,530						
123.0	89.9								5,510	5,490	4,960	4,540	4,170	3,860							
114.8	94.2									5,510	5,250	4,780	4,410								
106.6	95.1									5,510	5,310	4,850									
98.4	96.8									5,510	5,400										
90.2	90.2									5,510											
82.0	82.0								5,510												
73.8	73.8						5,510														
65.6	65.6					5,510															



R (ft)	ψ	RCmax (ft)	32.8	41.0	49.2	57.4	65.6	73.8	82.0	90.2	98.4	106.6	114.8	123.0	131.2	139.4	147.6	155.8	164.0	↔ (ft) ↓ (lb)	
164.0	48.9	11,020	10,780	8,750	7,340	6,280	5,470	4,830	4,300	3,880	3,500	3,200	2,930	2,690	2,490	2,290	2,140	1,980			
155.8	50.2		11,020	8,990	7,540	6,460	5,620	4,960	4,430	3,990	3,610	3,280	3,020	2,780	2,560	2,380	2,200				
147.6	50.9		11,020	9,150	7,670	6,570	5,730	5,070	4,520	4,060	3,680	3,350	3,090	2,840	2,620	2,420					
139.4	57.4		11,020	10,540	8,840	7,600	6,630	5,860	5,250	4,740	4,300	3,920	3,610	3,330	3,090						
131.2	57.1		11,020	10,540	8,770	7,540	6,590	5,840	5,220	4,690	4,280	3,900	3,590	3,310							
123.0	57.7		11,020	10,580	8,900	7,650	6,680	5,910	5,290	4,760	4,340	3,970	3,640								
114.8	60.7			11,020	9,370	8,040	7,030	6,240	5,580	5,030	4,580	4,190									
106.6	61.0			11,020	9,460	8,130	7,120	6,300	5,640	5,090	4,630										
98.4	62.0			11,020	9,610	8,270	7,230	6,410	5,730	5,180											
90.2	62.0			11,020	9,610	8,270	7,230	6,390	5,730												
82.0	62.0			11,020	9,590	8,240	7,210	6,390													
73.8	62.3			11,020	9,680	8,310	7,270														
65.6	62.0			11,020	9,610	8,270															

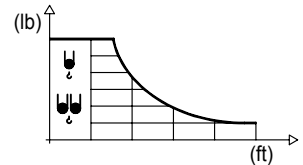
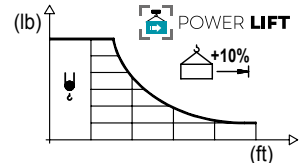


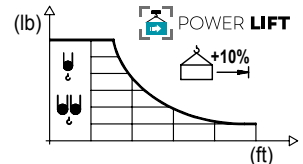
DIAGRAMA DE CARGAS POWERLIFT

Load chart PowerLift / Diagramme de charges PowerLift / Lastdiagramm PowerLift / Diagramma di carico PowerLift / Диаграмма распределения нагрузки PowerLift

R (ft)	ψ	RCmax (ft)	32.8	41.0	49.2	57.4	65.6	73.8	82.0	90.2	98.4	106.6	114.8	123.0	131.2	139.4	147.6	155.8	164.0	↔ (ft) ↓ (lb)	
164.0	54.3							5,510	5,420	4,870	4,410	4,030	3,700	3,420	3,170	2,950	2,760	2,580	2,430		
155.8	55.8								5,510	5,030	4,540	4,140	3,810	3,530	3,260	3,040	2,840	2,670			
147.6	56.8								5,510	5,140	4,650	4,230	3,900	3,590	3,350	3,110	2,910				
139.4	64.9									5,510	5,400	4,940	4,540	4,190	3,900	3,640					
131.2	64.6									5,510	5,380	4,920	4,520	4,190	3,880						
123.0	65.4									5,510	5,450	4,980	4,590	4,230							
114.8	68.8										5,510	5,270	4,850								
106.6	69.6										5,510	5,340									
98.4	66.1										5,510										
90.2	60.6								5,510												
82.0	55.1							5,510													
73.8	49.6						5,510														
65.6	44.1					5,510															



R (ft)	ψ	RCmax (ft)	32.8	41.0	49.2	57.4	65.6	73.8	82.0	90.2	98.4	106.6	114.8	123.0	131.2	139.4	147.6	155.8	164.0	↔ (ft) ↓ (lb)	
164.0	28.8		11,020	9,440	7,910	6,790	5,930	5,220	4,670	4,210	3,810	3,480	3,200	2,930	2,710	2,510	2,340	2,180			
155.8	29.6		11,020	9,720	8,160	6,990	6,110	5,400	4,830	4,340	3,950	3,590	3,310	3,040	2,800	2,600	2,430				
147.6	30.1		11,020	9,900	8,310	7,140	6,220	5,510	4,920	4,430	4,010	3,680	3,370	3,110	2,870	2,670					
139.4	34.1		11,020	9,610	8,270	7,230	6,390	5,730	5,180	4,720	4,300	3,970	3,660	3,400							
131.2	34.0		11,020	9,570	8,220	7,190	6,370	5,690	5,140	4,670	4,280	3,950	3,640								
123.0	34.3		11,020	9,680	8,310	7,280	6,440	5,780	5,200	4,740	4,340	3,990									
114.8	36.1		11,020	10,230	8,800	7,690	6,830	6,110	5,530	5,030	4,610										
106.6	36.4		11,020	10,340	8,910	7,780	6,900	6,190	5,600	5,090											
98.4	36.9		11,020	10,490	9,040	7,910	7,010	6,280	5,690												
90.2	37.0		11,020	10,520	9,060	7,940	7,030	6,310													
82.0	37.0		11,020	10,520	9,060	7,940	7,030														
73.8	37.3		11,020	10,630	9,150	8,000															
65.6	37.1			11,020	9,080																



MECANISMOS

Mechanisms / Mécanismes / Antriebe / Meccanismi / Механизмы

ES3-18-12
820 ft
29 hp

	I	II	III
ft/min	32	126	252
lb	5,510	5,510	2,870

	I	II	III
ft/min	16	63	126
lb	11,020	11,020	5,730

ES3-13-12
740 ft
21 hp

	I	II	III
ft/min	24	94	189
lb	5,510	2,500	2,870

	I	II	III
ft/min	12	47	94
lb	11,020	11,020	5,730

EFU2-18-12
820 ft
24 hp

ft/min	lb
5,510	2,200
4,410	
3,310	
2,200	
138	243

ft/min	lb
11,020	4,410
8,820	
6,610	
4,410	
88	121

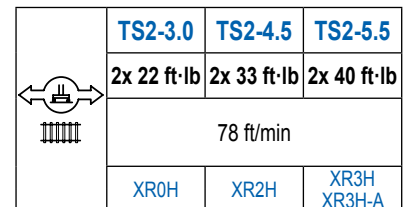
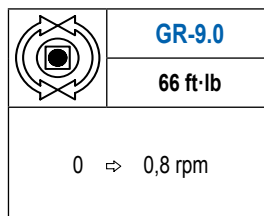
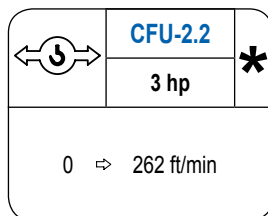
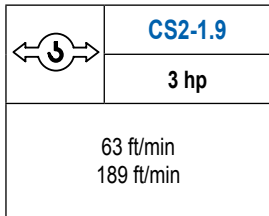
EFU2-11-12
740 ft
15 hp

ft/min	lb
5,510	2,200
4,410	
3,310	
2,200	
79	164

ft/min	lb
11,020	4,410
8,820	
6,610	
4,410	
88	121

MECANISMOS

Mechanisms / Mécanismes / Antriebe / Meccanismi / Механизмы



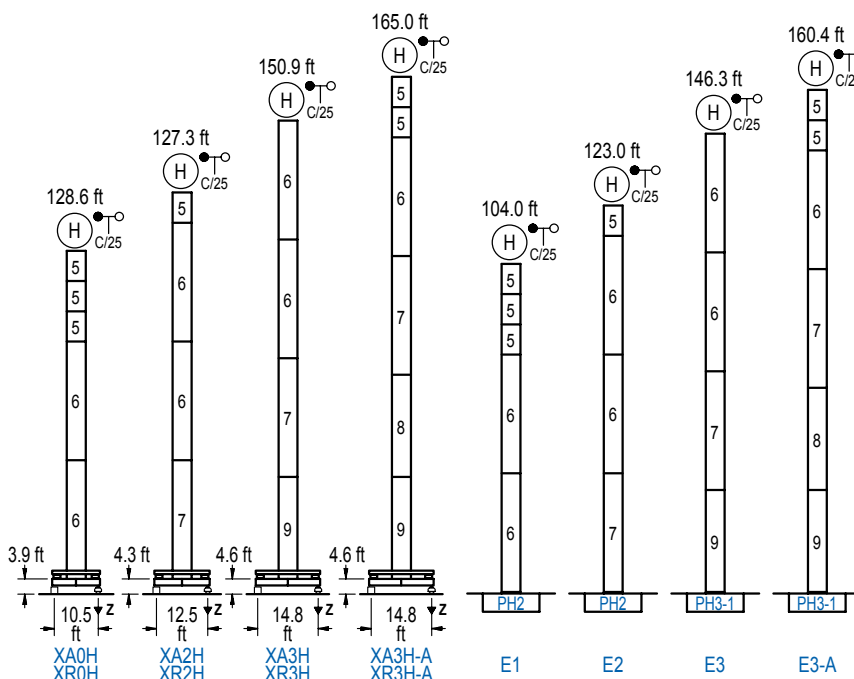
POTENCIA / POWER / PUISSANCE / LEISTUNG / POTENZA / МОЩНОСТЬ				Tensión de alimentación / Operating voltage / Tension de service / Betriebsspannung / Tensione di alimentazione / Напряжение источника питания	Generador / Generator / Générateur / Generator / Generatore / Генератор
Elevación / Hoist / Levage / Hub / Sollevamento / Тип механизма (подъем)	Carro / Trolley / Chariot / Laufkatze / Carrello / Грузовая тележка	Giro / Slewing / Rotation / Drehbewegung / Rotazione / Поворот	Traslación / Travel / Translation / Verfahrbewegung / Traslazione / Ход	480 V 3ph 60 Hz	107 kVA 90 kVA 60 kVA 48 kVA
ES3-18-12	CS2-1.9	GR-9.0	(2x) TS2-3.0		
ES3-13-12			(2x) TS2-4.5		
EFU2-18-12	CFU-2.2		(2x) TS2-5.5		
EFU2-11-12					

Opcional / Optional / En option / Kaufoption / Opzionale / Опционально

ALTURAS BAJO GANCHO

Heights under hook / Hauteurs sous crochet / Hakenhöhen / Altezza sotto gancio / Высота под крюком

∅ 3.9 ft



n°	Ref.	∅	h
5	MH121	3.9	9.8
6	MH124-1	3.9	38.7
7	MH124A	3.9	38.7
8	MT123A	3.9	33.1
9	MT123	3.9	33.1

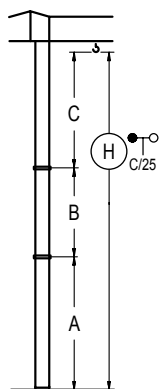
MH124-1 = 4x MH121 - 0.7 ft

H = H + 0.7 ft
 H = H
 H = H
 H = H - 0.7 ft

Z máx.	En servicio / In operation / En service / In Betrieb / In servizio / При работе	XR0H..... 95 kip XR2H..... 93 kip XR3H..... 95 kip XR3H-A... 106 kip
	Fuera de servicio / Out of service / Hors service / Ausser Betrieb / Fuori servizio / В стационарном состоянии	XR0H..... 93 kip XR2H..... 108 kip XR3H..... 141 kip XR3H-A... 168 kip

GRÚA ARRIOSTRADA

Braced crane / Grue à entretoisement / Abgespannter Kran / Gru ancorata / Нарастиваемый кран

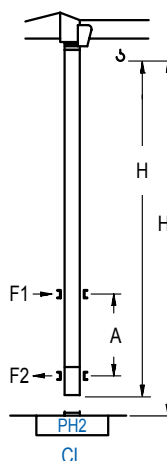


	XA0H	XA2H	XA3H	XA3H-A
A max	91.2 52.5	111.2 52.8	134.8 76.4	148.3 109.6
B max	- 68.9 39.4	- 68.9 39.4	- 68.9 39.4	- 68.9 39.4
C max	89.2	89.2	89.2	89.2
H max	180.4	249.3	200.5	269.4
	224.1	293.0	237.5	306.4

	E1	E2	E3	E3-A
A max	87.3 48.6	107.0 48.6	130.2 71.9	143.7 105.0
B max	- 68.9 39.4	- 68.9 39.4	- 68.9 39.4	- 68.9 39.4
C max	89.2	89.2	89.2	89.2
H max	176.5	245.4	196.2	265.1
	219.5	288.4	232.9	301.8

GRÚA TREPADORA

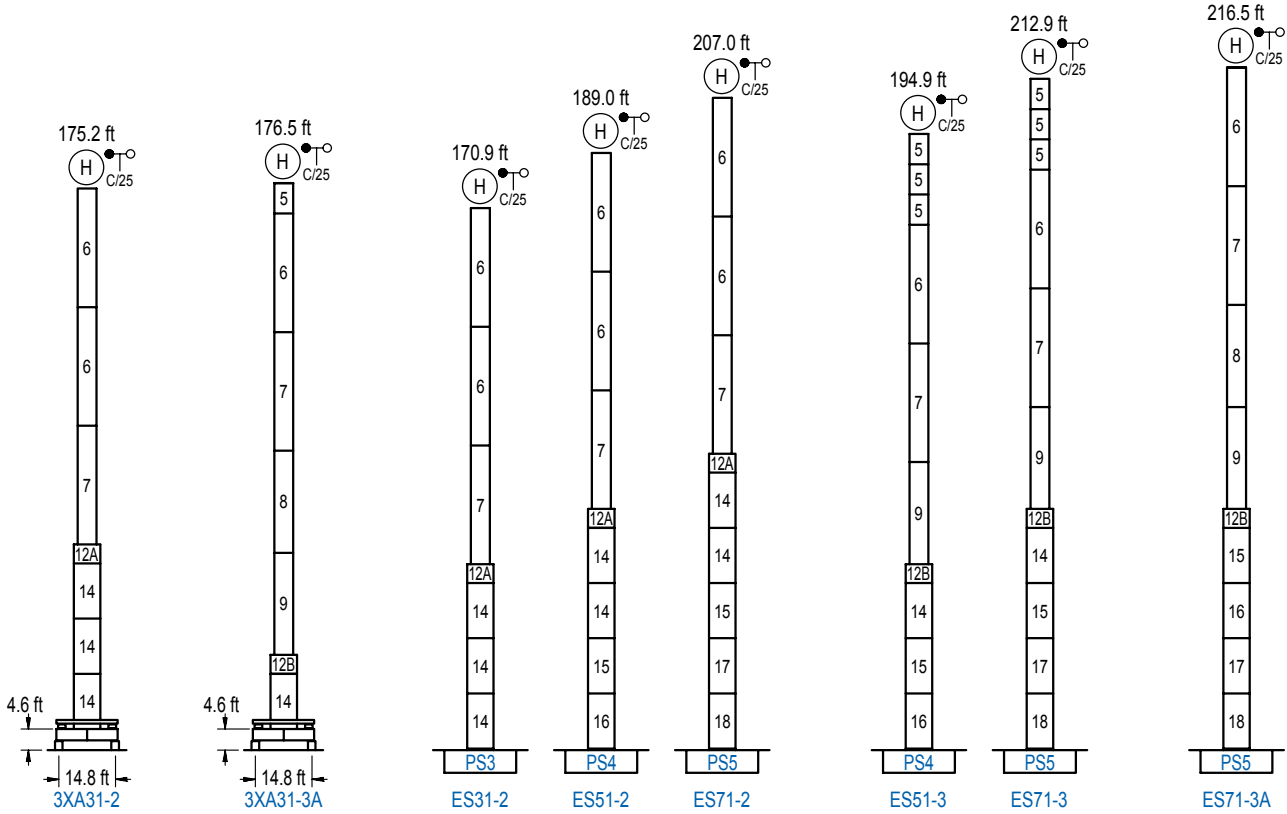
Internal climbing crane / Grue avec cage de télescopage intérieure / Kran mit klettern im Gebäude / Gru in rampante in cavedio / Кран с самоподъемом



	Hs < 980 ft	A max (ft)	A min (ft)
142.1 ft 10x MH121 + 4x MT12-3A + CL20A	39.4	26.2	
132.2 ft 9x MH121 + 4x MT12-3A + CL20A	39.4	26.2	
122.4 ft 8x MH121 + 4x MT12-3A + CL20A	39.4	23.0	

n°	Ref.	∅	h
5	MH121	3.9	9.8
10	MT12-3A	3.9	9.5
11	CL20A	3.9	8.5

Otras zonas de viento, alturas superiores, arriostramientos o trepado interno consultar / Other wind zones, additional hook heights, tie frames or internal climbing on request / Autres zones de vent, des hauteurs supplémentaires, entretoisements ou grues avec cage de télescopage intérieure, sur demande / Andere Windzonen, weitere Hakenhöhen, Abspannungen zum Gebäude oder Klettern im Gebäude auf Anfrage / Per zone con velocità del vento particolari, altezze superiori, ancoraggi o rampante in cavedio, consultare il fabbricante / При других ветренных зонах, при большой высоте, привязках к зданию или наращивании крана внутри здания проконсультируйтесь с нами



n°	Ref.	∅	h	n°	Ref.	∅	h	n°	Ref.	∅	h
1	MH111	3.9	9.8	12A	TMS13/PMH12	5.2	3.3	16	S14	5.2	18.0
2	MH114	3.9	38.7	12B	TMS13/PMH13	5.2	3.3	17	TS15	5.2	18.0
3	MH114A	3.9	38.7	14	S13	5.2	18.0	18	S15	5.2	18.0
7	MH124A	3.9	38.7	15	TS14	5.2	18.0				
9	MT123	3.9	33.1								
MH114 = 4x MH111 - 0.7 ft				1x S13 = 1x S13M				1x S15 = 1x S15M			