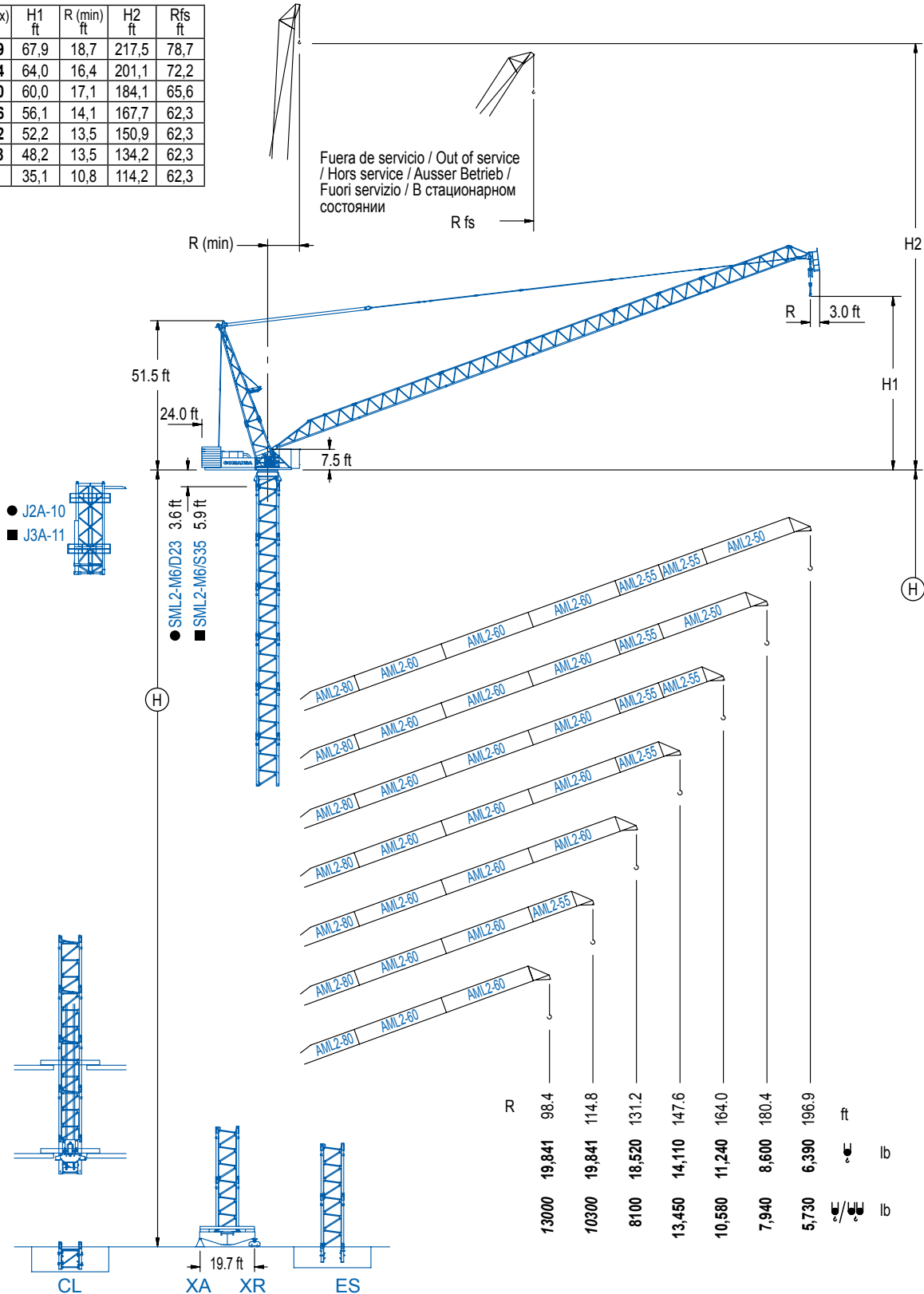


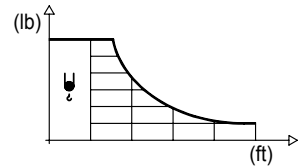
| R (max)<br>ft | H1<br>ft | R (min)<br>ft | H2<br>ft | Rfs<br>ft |
|---------------|----------|---------------|----------|-----------|
| 196,9         | 67,9     | 18,7          | 217,5    | 78,7      |
| 180,4         | 64,0     | 16,4          | 201,1    | 72,2      |
| 164,0         | 60,0     | 17,1          | 184,1    | 65,6      |
| 147,6         | 56,1     | 14,1          | 167,7    | 62,3      |
| 131,2         | 52,2     | 13,5          | 150,9    | 62,3      |
| 114,8         | 48,2     | 13,5          | 134,2    | 62,3      |
| 98,4          | 35,1     | 10,8          | 114,2    | 62,3      |



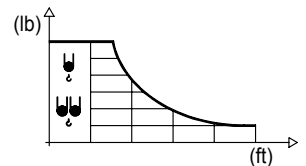
## DIAGRAMA DE CARGAS

Load chart / Diagramme de charges / Lastdiagramm / Diagramma di carico / Диаграмма распределения нагрузки

| R<br>(ft) | ↕ | RCmax<br>(ft) | 49.2 | 65.6 | 82.0 | 98.4   | 114.8  | 131.2  | 147.6  | 164.0  | 180.4 | 196.9 | ↔(ft)<br>↕(lb) |
|-----------|---|---------------|------|------|------|--------|--------|--------|--------|--------|-------|-------|----------------|
| 196.9     |   | 107.9         |      |      |      | 19,840 | 17,590 | 13,690 | 11,050 | 9,130  | 7,630 | 6,390 |                |
| 180.4     |   | 111.9         |      |      |      | 19,840 | 18,960 | 15,060 | 12,320 | 10,270 | 8,600 |       |                |
| 164.0     |   | 115.8         |      |      |      |        | 19,840 | 16,270 | 13,450 | 11,240 |       |       |                |
| 147.6     |   | 120.1         |      |      |      |        | 19,840 | 17,200 | 14,110 |        |       |       |                |
| 131.2     |   | 124.3         |      |      |      |        | 19,840 | 18,520 |        |        |       |       |                |
| 114.8     |   | 114.8         |      |      |      |        | 19,840 |        |        |        |       |       |                |
| 98.4      |   | 98.4          |      |      |      | 19,840 |        |        |        |        |       |       |                |

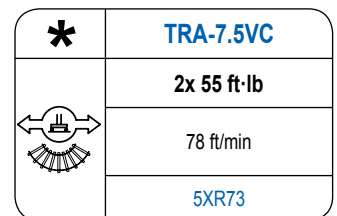
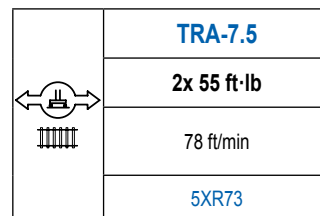
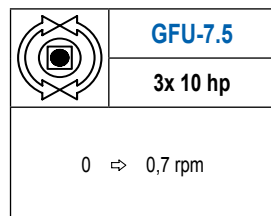
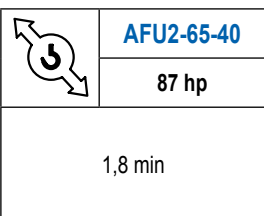
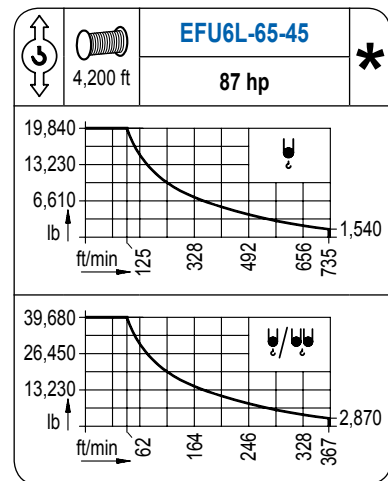
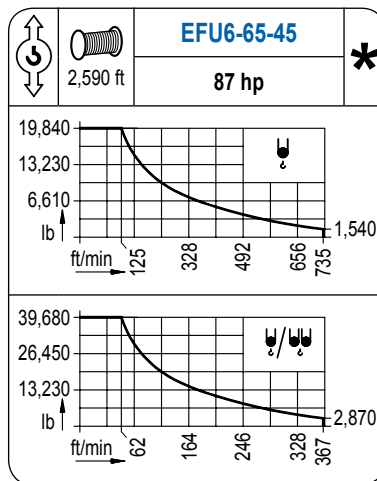
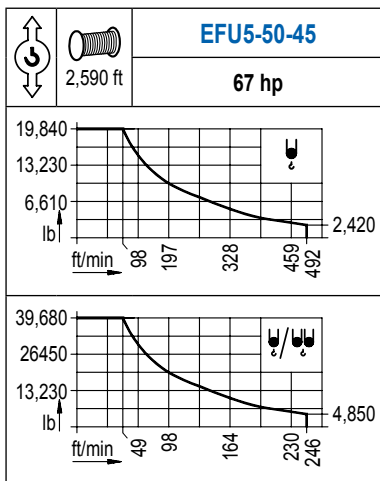


| R<br>(ft) | ↕/↕ | RCmax<br>(ft) | 49.2   | 65.6   | 82.0   | 98.4   | 114.8  | 131.2  | 147.6  | 164.0  | 180.4 | 196.9 | ↔(ft)<br>↕(lb) |
|-----------|-----|---------------|--------|--------|--------|--------|--------|--------|--------|--------|-------|-------|----------------|
| 196.9     |     | 59.1          | 39,680 | 32,610 | 22,310 | 16,730 | 13,230 | 10,820 | 9,060  | 7,720  | 6,640 | 5,730 |                |
| 180.4     |     | 60.7          | 39,680 | 34,960 | 24,820 | 19,030 | 15,300 | 12,680 | 10,710 | 9,190  | 7,940 |       |                |
| 164.0     |     | 62.7          | 39,680 | 37,130 | 27,140 | 21,190 | 17,240 | 14,420 | 12,300 | 10,580 |       |       |                |
| 147.6     |     | 65.6          |        | 39,680 | 29,320 | 23,060 | 18,850 | 15,810 | 13,450 |        |       |       |                |
| 131.2     |     | 69.2          |        | 39,680 | 32,100 | 25,620 | 21,160 | 17,860 |        |        |       |       |                |
| 114.8     |     | 69.9          |        | 39,680 | 33,220 | 27,050 | 22,710 |        |        |        |       |       |                |
| 98.4      |     | 72.2          |        | 39,680 | 34,700 | 28,660 |        |        |        |        |       |       |                |



## MECANISMOS

Mechanisms / Mécanismes / Antriebe / Meccanismi / Механизмы

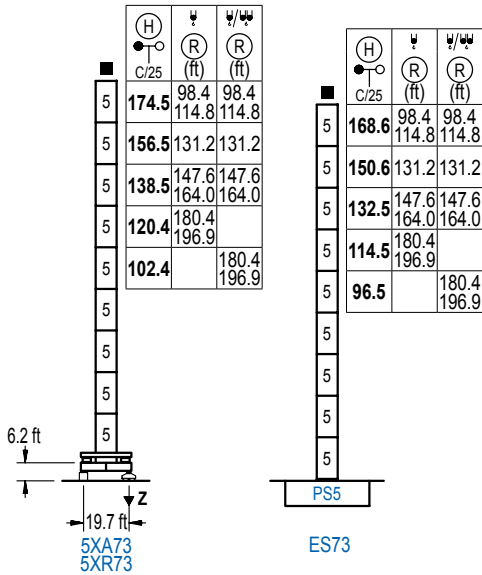


| POTENCIA / POWER / PUISSANCE / LEISTUNG / POTENZA / МОЩНОСТЬ             |  |  |   | Tensión de alimentación / Operating voltage / Tension de service / Betriebsspannung / Tensione di alimentazione / Напряжение источника питания |         | Generador / Generator / Générateur / Generator / Generatore / Генератор         |  |
|--|--|--|---|--|---------|---|--|
| Elevación / Hoist / Levage / Hub / Sollevamento / Тип механизма (подъем) | Abatimiento / Luffing / Releage / Einziehen / Brandeggio / Складывание | Giro / Slewing / Rotation / Drehbewegung / Rotazione / Поворот | Traslación / Travel / Translation / Verfahrbewegung / Traslazione / Ход | 480 V  | 260 kVA | Opcional / Optional / En option / Kaufoption / Opzionale / Опционально<br><br>* |  |
| EFU5-50-45   | AFU2-65-40   | (3x) GFU-7.5   | (2x) TRA-7.5  | 3ph  | 280 kVA |   |  |
| EFU6-65-45   |  |  |   | 60 Hz  | 280 kVA |   |  |
| EFU6L-65-45  |  |  |   |  |         |   |  |

## ALTURAS DE TORRE

Tower height / Hauteurs de tour / Turmhöhen / Altezza della torre / Высота башни

∅ 8.2 ft



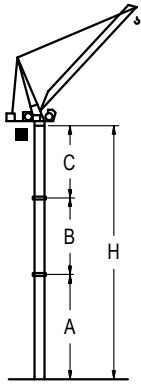
| n°               | Ref. | ∅   | h    |
|------------------|------|-----|------|
| 5                | S35  | 8.2 | 18.0 |
| 1x S35 = 1x S35M |      |     |      |

| Z máx. | En servicio / In operation / En service / In Betrieb / In servizio / При работе                                | 5XR73.. 293 kip |
|--------|--|-----------------|
|        | Fuera de servicio / Out of service / Hors service / Ausser Betrieb / Fuori servizio / В стационарном состоянии | 5XR73.. 366 kip |

## GRÚA ARRIOSTRADA

Braced crane / Grue à entretoisement / Abgespannter Kran / Gru ancorata / Нарцываемый кран

∅ 8.2 ft



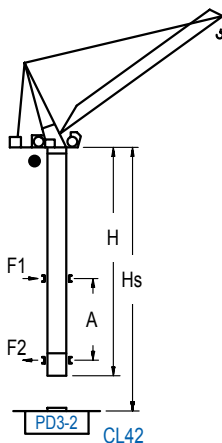
|       |     | 5XA73         |               |               |       |              |  |
|-------|-----|---------------|---------------|---------------|-------|--------------|--|
| R     | W   | -             | 196.9 / 180.4 | 164.0 / 147.6 | 131.2 | 114.8 / 98.4 |  |
| (ft)  | W/W | 196.9 / 180.4 | -             | 164.0 / 147.6 | 131.2 | 114.8 / 98.4 |  |
| A max |     |               | 78.4          | 96.5          | 114.5 | 132.5        |  |
| A min |     |               | 78.4          | 78.4          | 78.4  | 78.4         |  |
| B max |     |               | 54.1          | 54.1          | 72.2  | 72.2         |  |
| B min |     |               | 54.1          | 54.1          | 54.1  | 54.1         |  |
| C max |     |               | 96.1          | 96.1          | 114.2 | 114.2        |  |
| H max |     |               | 174.5         | 228.7         | 192.6 | 246.7        |  |

|       |     | ES73          |               |               |       |              |  |
|-------|-----|---------------|---------------|---------------|-------|--------------|--|
| R     | W   | -             | 196.9 / 180.4 | 164.0 / 147.6 | 131.2 | 114.8 / 98.4 |  |
| (ft)  | W/W | 196.9 / 180.4 | -             | 164.0 / 147.6 | 131.2 | 114.8 / 98.4 |  |
| A max |     |               | 72.5          | 90.6          | 108.6 | 126.6        |  |
| A min |     |               | 72.5          | 72.5          | 72.5  | 72.5         |  |
| B max |     |               | 54.1          | 54.1          | 72.2  | 72.2         |  |
| B min |     |               | 54.1          | 54.1          | 54.1  | 54.1         |  |
| C max |     |               | 96.1          | 96.1          | 114.2 | 114.2        |  |
| H max |     |               | 168.6         | 222.8         | 186.7 | 240.8        |  |

## GRÚA TREPADORA

Internal climbing crane / Grue avec cage de télescope intérieure / Kran mit klettern im Gebäude / Gru in rampante in cavedio / Кран с самоподъемом

∅ 6.6 ft



| H  | W             | W/W           | Hs < 985 ft |            |
|--|---------------|---------------|-------------|------------|
| C/25                                       | (ft)          | (ft)          | A max (ft)  | A min (ft) |
| 159.1 ft<br>(4x D23 + 4x D23A + CLD23A-12) | 98.4 / 114.8  | 98.4 / 114.8  | 64.3        | 29.5       |
| 141.1 ft<br>(3x D23 + 4x D23A + CLD23A-12) | 131.2         | 131.2         | 55.1        | 29.5       |
| 123.0 ft<br>(2x D23 + 4x D23A + CLD23A-12) | 147.6 / 164.0 | 147.6 / 164.0 | 46.3        | 29.5       |
| 105.0 ft<br>(D23 + 4x D23A + CLD23A-12)    | 180.4 / 196.9 | -             | 37.4        | 32.8       |
| 86.9 ft<br>(4x D23A + CLD23A-12)           | -             | 180.4 / 196.9 | 29.5        | 29.5       |

| n° | Ref.      | ∅   | h    |
|----|-----------|-----|------|
| 3  | D23       | 6.6 | 18.0 |
| 4  | D23A      | 6.6 | 18.0 |
| 14 | CLD23A-12 | 6.6 | 11.2 |

Otras zonas de viento, alturas superiores, arriostramientos o trepado interno consultar / Other wind zones, additional hook heights, tie frames or internal climbing on request / Autres zones de vent, des hauteurs supplémentaires, entretoisements ou grues avec cage de télescope intérieure, sur demande / Andere Windzonen, weitere Hakenhöhen, Abspannungen zum Gebäude oder Klettern im Gebäude auf Anfrage / Per zone con velocità del vento particolari, altezze superiori, ancoraggi o rampante in cavedio, consultare il fabbricante / При других ветренных зонах, при большой высоте, привязках к зданию или наращивании крана внутри здания проконсультируйтесь с нами



**COMANSA**

---