

R (max) ft	H1 ft	R (min) ft	H2 ft	Rfs ft
196,9	67,9	18,7	217,5	78,7
180,4	64,0	16,4	201,1	72,2
164,0	60,0	17,1	184,1	65,6
147,6	56,1	14,1	167,7	62,3
131,2	52,2	13,5	150,9	62,3
114,8	48,2	13,5	134,2	62,3
98,4	35,1	10,8	114,2	62,3

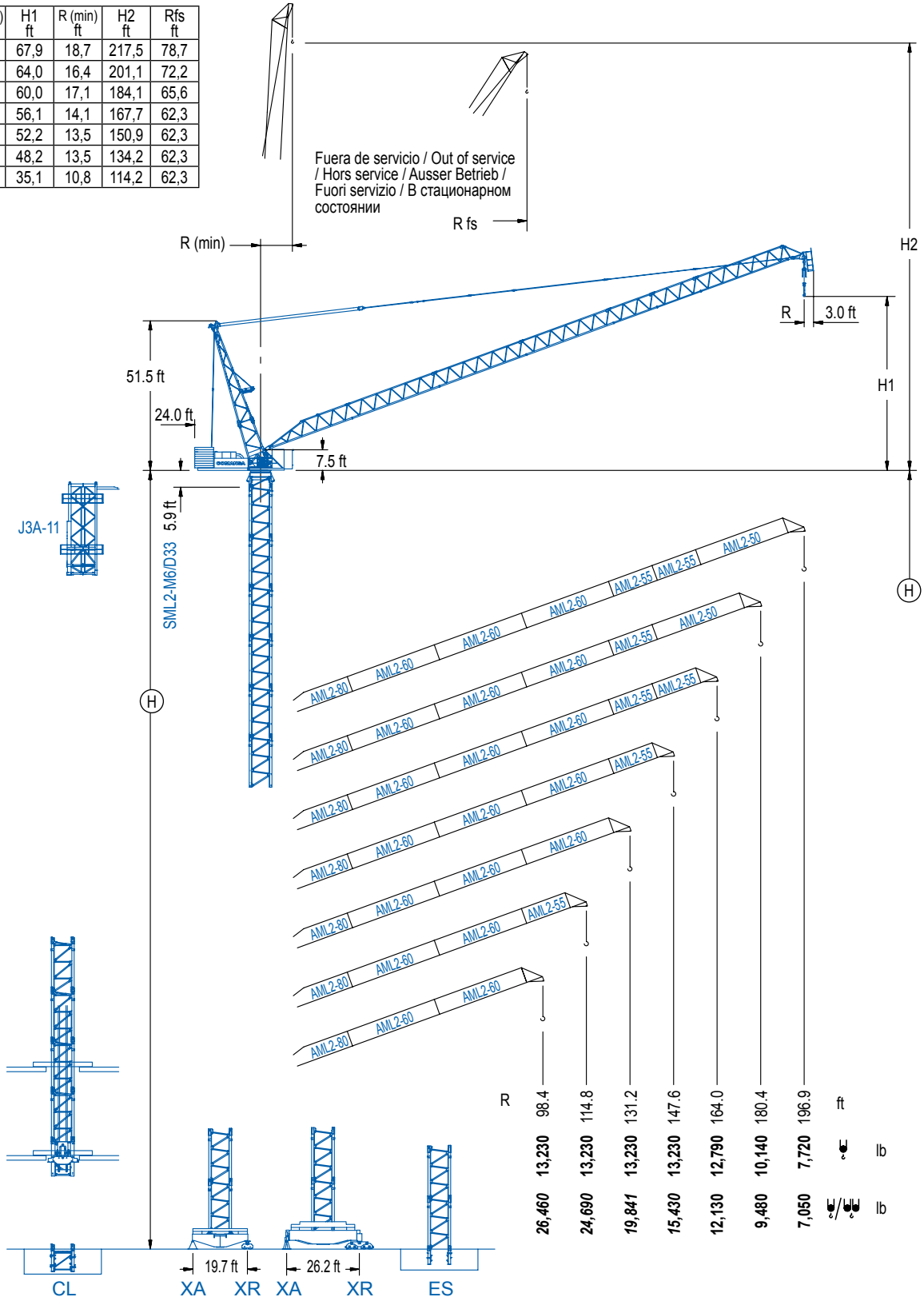
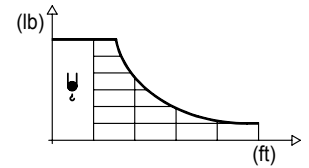


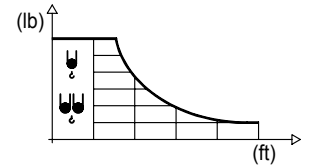
DIAGRAMA DE CARGAS

Load chart / Diagramme de charges / Lastdiagramm / Diagramma di carico / Диаграмма распределения нагрузки

R (ft)	RCmax (ft)	49.2	65.6	82.0	98.4	114.8	131.2	147.6	164.0	180.4	196.9	↔(ft) ↓(lb)
196.9	147.6							13,230	10,930	9,170	7,720	
180.4	152.6							13,230	11,840	10,140		
164.0	159.1							13,230	12,790			
147.6	147.6							13,230				
131.2	131.2						13,230					
114.8	114.8				13,230							
98.4	98.4			13,230								

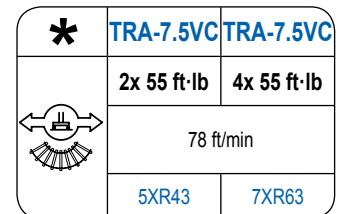
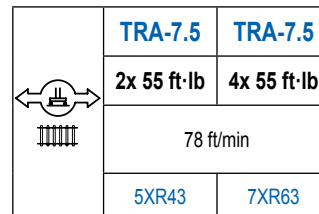
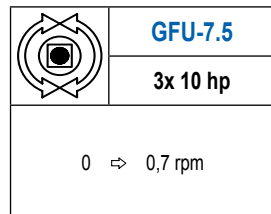
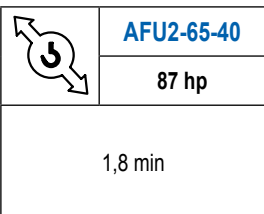
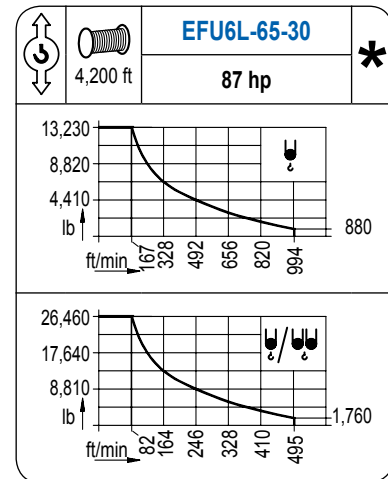
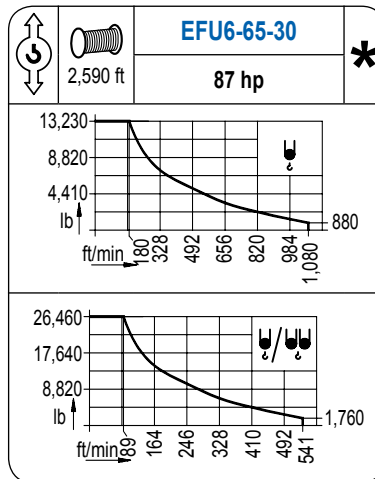
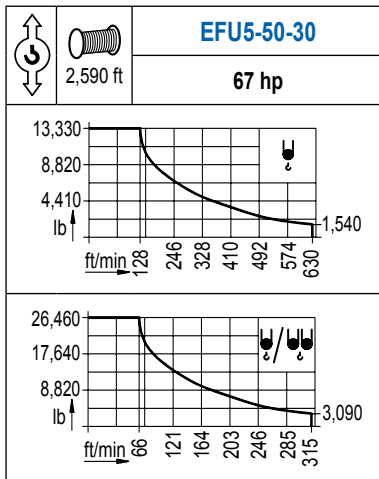


R (ft)	RCmax (ft)	49.2	65.6	82.0	98.4	114.8	131.2	147.6	164.0	180.4	196.9	↔(ft) ↓(lb)
196.9	91.9			26,460	23,280	17,720	14,150	11,640	9,770	8,290	7,050	
180.4	95.1			26,460	25,020	19,510	15,830	13,180	11,130	9,480		
164.0	98.4			26,460	20,940	17,150	14,350	12,130				
147.6	101.7			26,460	22,270	18,410	15,430					
131.2	105.0			26,460	23,610	19,840						
114.8	108.3			26,460	24,690							
98.4	98.4			26,460								



MECANISMOS

Mechanisms / Mécanismes / Antriebe / Meccanismi / Механизмы

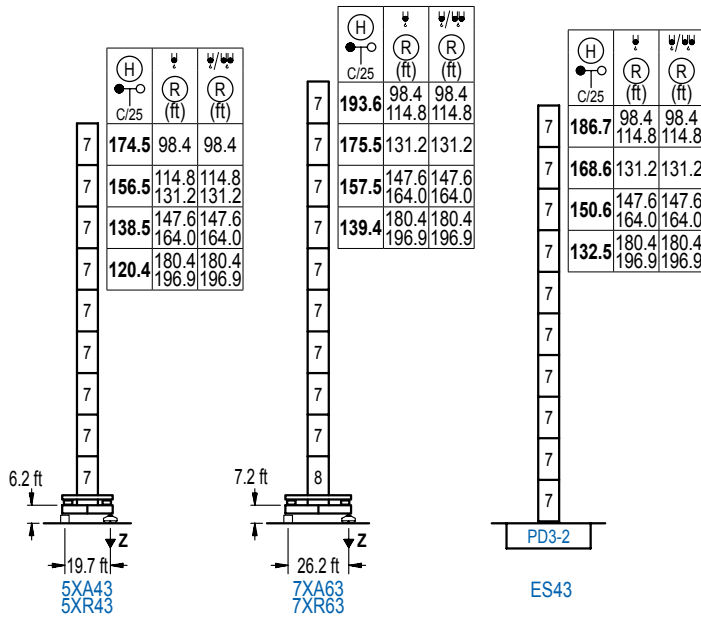


POTENCIA / POWER / PUISSANCE / LEISTUNG / POTENZA / МОЩНОСТЬ				Tensión de alimentación / Operating voltage / Tension de service / Betriebsspannung / Tensione di alimentazione / Напряжение источника питания	
Elevación / Hoist / Levage / Hub / Sollevamento / Тип механизма (подъем)	Abatimiento / Luffing / Releage / Einziehen / Brandeggio / Складывание	Giro / Slewing / Rotation / Drehbewegung / Rotazione / Поворот	Traslación / Travel / Translation / Verfahrbewegung / Traslazione / Ход	480 V	Generador / Generator / Générateur / Generator / Generatore / Генератор
EFU5-50-30	AFU2-65-40	(3x) GFU-7.5	(2x) TRA-7.5	260 kVA	Opcional / Optional / En option / Kaufoption / Opzionale / Опционально *
EFU6-65-30			(4x) TRA-7.5	280 kVA	
EFU6L-65-30				280 kVA	

ALTURAS DE TORRE

Tower height / Hauteurs de tour / Turmhöhen / Altezza della torre / Высота башни

∅8.2 ft



n°	Ref.	∅	h
7	D33	8.2	18.0
8	TD34	8.2	18.0

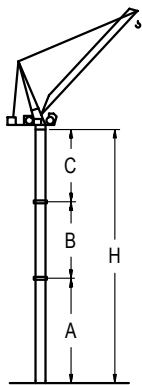
1x D33 = 1x D33M

Z máx.	En servicio / In operation / En service / In Betrieb / In servizio / При работе	5XR43.. 300 kip 7XR63.. 262 kip
	Fuera de servicio / Out of service / Hors service / Ausser Betrieb / Fuori servizio / В стационарном состоянии	5XR43.. 370 kip 7XR63.. 337 kip

GRÚA ARRIOSTRADA

Braced crane / Grue à entretoisement / Abgespannter Kran / Gru ancorata / Наращиваемый кран

∅8.2 ft



5XA43				
R	W	W/W	W/W	W/W
(ft)	(ft)	(ft)	(ft)	(ft)
196.9 / 180.4	164.0 / 147.6	131.2 / 114.8	98.4	
196.9 / 180.4	164.0 / 147.6	131.2 / 114.8	98.4	
A max	78.4	96.5	114.5	132.5
A min	78.4	78.4	78.4	78.4
B max	-	54.1	-	108.3
B min	-	54.1	-	54.1
C max	96.1	96.1	114.2	132.2
C min	174.5	228.7	210.6	282.8

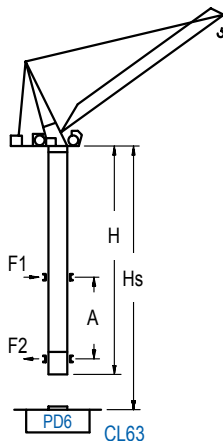
7XA63				
R	W	W/W	W/W	W/W
(ft)	(ft)	(ft)	(ft)	(ft)
196.9 / 180.4	164.0 / 147.6	131.2	114.8 / 98.4	
196.9 / 180.4	164.0 / 147.6	131.2	114.8 / 98.4	
A max	97.4	115.5	133.5	151.6
A min	79.4	79.4	79.4	79.4
B max	-	54.1	-	108.3
B min	-	54.1	-	54.1
C max	96.1	96.1	114.2	132.2
C min	193.6	247.7	229.7	301.8

ES43				
R	W	W/W	W/W	W/W
(ft)	(ft)	(ft)	(ft)	(ft)
196.9 / 180.4	164.0 / 147.6	131.2	114.8 / 98.4	
196.9 / 180.4	164.0 / 147.6	131.2	114.8 / 98.4	
A max	90.6	108.6	126.6	144.7
A min	72.5	72.5	72.5	72.5
B max	-	54.1	-	108.3
B min	-	54.1	-	54.1
C max	96.1	96.1	114.2	132.2
C min	186.7	240.8	222.8	294.9

GRÚA TREPADORA

Internal climbing crane / Grue avec cage de télescopage intérieure / Kran mit klettern im Gebäude / Gru in rampante in cavedio / Кран с самоподъемом

∅8.2 ft

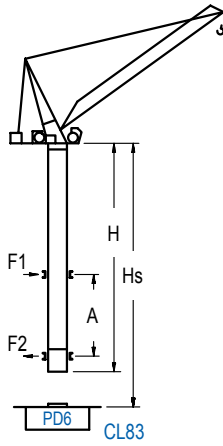


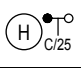
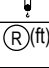
H	W/W		Hs < 1,310 ft	
	(ft)	(ft)	A max	A min
(ft)	(ft)	(ft)	(ft)	(ft)
216.9 ft (6x D33 + TD34 + 4x D34A + CLD34A-24)	98.4 114.8	98.4 114.8	80.7	49.2
198.8 ft (5x D33 + TD34 + 4x D34A + CLD34A-24)	131.2	131.2	80.7	45.9
180.8 ft (4x D33 + TD34 + 4x D34A + CLD34A-24)	147.6 164.0	147.6 164.0	71.9	45.9
162.7 ft (3x D33 + TD34 + 4x D34A + CLD34A-24)	180.4 196.9	180.4	62.7	49.2
144.7 ft (2x D33 + TD34 + 4x D34A + CLD34A-24)		196.9	53.8	42.7

n°	Ref.	∅	h
7	D33	8.2	18.0
8	TD34	8.2	18.0
20	D34A	8.2	18.0
21	CLD34A-24	8.2	12.5

1x D33 = 1x D33M

Otras zonas de viento, alturas superiores, arriostramientos o trepado interno consultar / Other wind zones, additional hook heights, tie frames or internal climbing on request / Autres zones de vent, des hauteurs supplémentaires, entretoisements ou grues avec cage de télescopage intérieure, sur demande / Andere Windzonen, weitere Hakenhöhen, Abspannungen zum Gebäude oder Klettern im Gebäude auf Anfrage / Per zone con velocità del vento particolari, altezze superiori, ancoraggi o rampante in cavedio, consultare il fabbricante / При других ветренных зонах, при большой высоте, привязках к зданию или наращивании крана внутри здания проконсультируйтесь с нами



			Hs < 1,310 ft	
	(R)(ft)	(R)(ft)	A max (ft)	A min (ft)
216.9 ft (5x D33 + TD34 + TD36B + 4x D36A + CLD36A-28)	98.4 114.8	98.4 114.8	80.7	32.8
198.8 ft (4x D33 + TD34 + TD36B + 4x D36A + CLD36A-28)	131.2	131.2	71.9	32.8
180.8 ft (3x D33 + TD34 + TD36B + 4x D36A + CLD36A-28)	147.6 164.0	147.6 164.0	62.7	32.8
162.7 ft (2x D33 + TD34 + TD36B + 4x D36A + CLD36A-28)	180.4 196.9	180.4 196.9	53.8	32.8

nº	Ref.	∅ (ft)	h
7	D33	8.2	18.0
8	TD34	8.2	18.0
10	TD36B	8.2	18.0
12	D36A	8.2	18.0
13	CLD36A-28	8.2	12.5

1x D33 = 1x D33M

Otras zonas de viento, alturas superiores, arriostamientos o trepado interno consultar / Other wind zones, additional hook heights, tie frames or internal climbing on request / Autres zones de vent, des hauteurs supplémentaires, entretoisements ou grues avec cage de télescopage intérieure, sur demande / Andere Windzonen, weitere Hakenhöhen, Abspannungen zum Gebäude oder Klettern im Gebäude auf Anfrage / Per zone con velocità del vento particolari, altezze superiori, ancoraggi o rampante in cavedio, consultare il fabbricante / При других ветренных зонах, при большой высоте, привязках к зданию или наращивании крана внутри здания проконсультируйтесь с нами