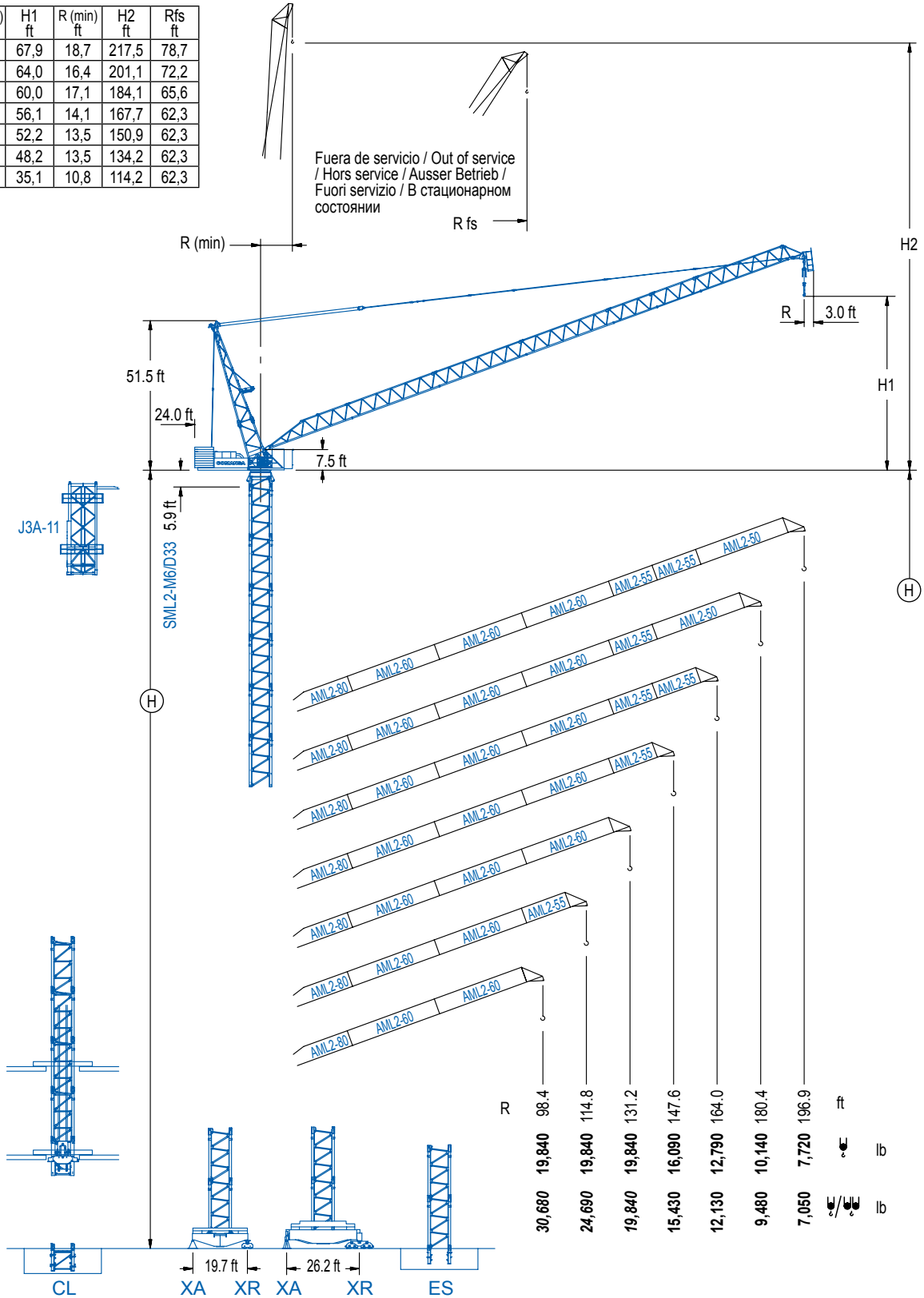


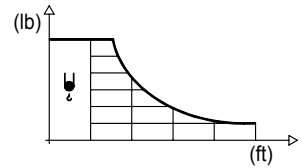
R (max) ft	H1 ft	R (min) ft	H2 ft	Rfs ft
<b>196,9</b>	67,9	18,7	217,5	78,7
<b>180,4</b>	64,0	16,4	201,1	72,2
<b>164,0</b>	60,0	17,1	184,1	65,6
<b>147,6</b>	56,1	14,1	167,7	62,3
<b>131,2</b>	52,2	13,5	150,9	62,3
<b>114,8</b>	48,2	13,5	134,2	62,3
<b>98,4</b>	35,1	10,8	114,2	62,3



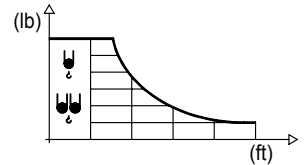
## DIAGRAMA DE CARGAS

Load chart / Diagramme de charges / Lastdiagramm / Diagramma di carico / Диаграмма распределения нагрузки

R (ft)	↕	RCmax (ft)	49.2	65.6	82.0	98.4	114.8	131.2	147.6	164.0	180.4	196.9	↔(ft) ↕(lb)
196.9		118.1					19,840	16,310	13,210	10,930	9,170	7,720	
180.4		121.4					19,840	17,440	14,350	12,040	10,140		
164.0		124.7					19,840	18,320	15,230	12,790			
147.6		129.6					19,840	19,470	16,090				
131.2		131.2						19,840					
114.8		114.8					19,840						
98.4		98.4				19,840							

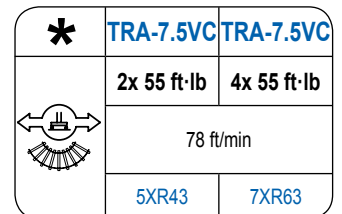
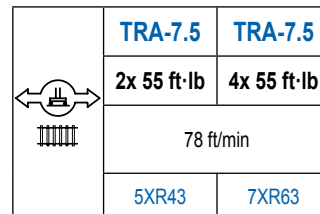
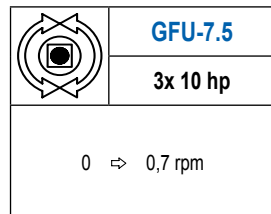
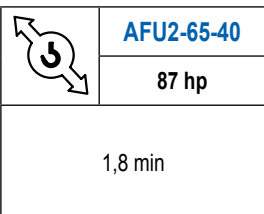
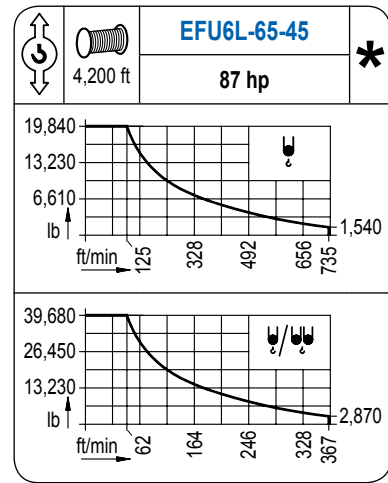
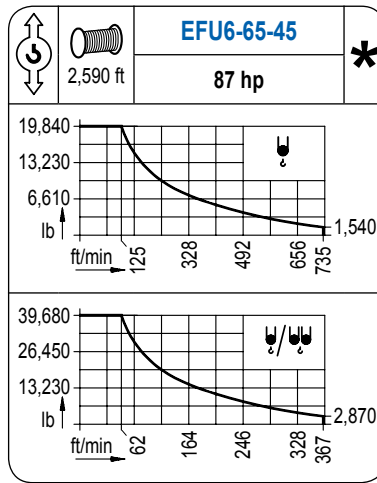
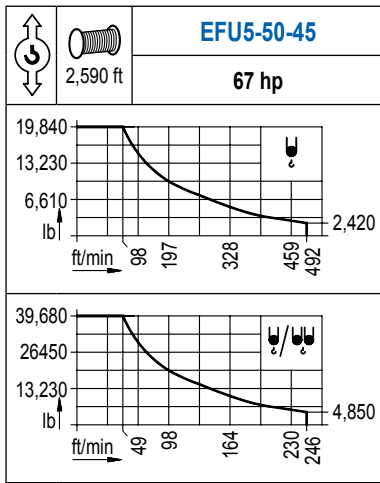


R (ft)	↕/↕	RCmax (ft)	49.2	65.6	82.0	98.4	114.8	131.2	147.6	164.0	180.4	196.9	↔(ft) ↕(lb)
196.9		59.1	39,680	33,640	24,180	18,700	15,100	12,570	10,690	9,240	8,050	7,050	
180.4		60.7	39,680	35,650	26,480	20,920	17,150	14,460	12,410	10,800	9,480		
164.0		62.7	39,680	37,460	28,440	22,770	18,870	16,050	13,870	12,130			
147.6		65.6	39,680	39,680	30,620	24,800	20,750	17,750	15,430				
131.2		69.2	39,680	39,680	33,070	27,140	22,970	19,840					
114.8		73.5	39,680	39,680	35,320	29,100	24,690						
98.4		78.7	39,680	39,680	37,920	30,860							



## MECANISMOS

Mechanisms / Mécanismes / Antriebe / Meccanismi / Механизмы



POTENCIA / POWER / PUISSANCE / LEISTUNG / POTENZA / МОЩНОСТЬ				Tensión de alimentación / Operating voltage / Tension de service / Betriebsspannung / Tensione di alimentazione / Напряжение источника питания	
Elevación / Hoist / Levage / Hub / Sollevamento / Тип механизма (подъем)	Abatimiento / Luffing / Releage / Einziehen / Brandeggio / Складывание	Giro / Slewing / Rotation / Drehbewegung / Rotazione / Поворот	Traslación / Travel / Translation / Verfahrbewegung / Traslazione / Ход	480 V	Generador / Generator / Générateur / Generator / Generatore / Генератор
EFU5-50-45	AFU2-65-40	(3x) GFU-7.5	(2x) TRA-7.5	3ph	260 kVA
EFU6-65-45			(4x) TRA-7.5	280 kVA	
EFU6L-65-45			280 kVA		

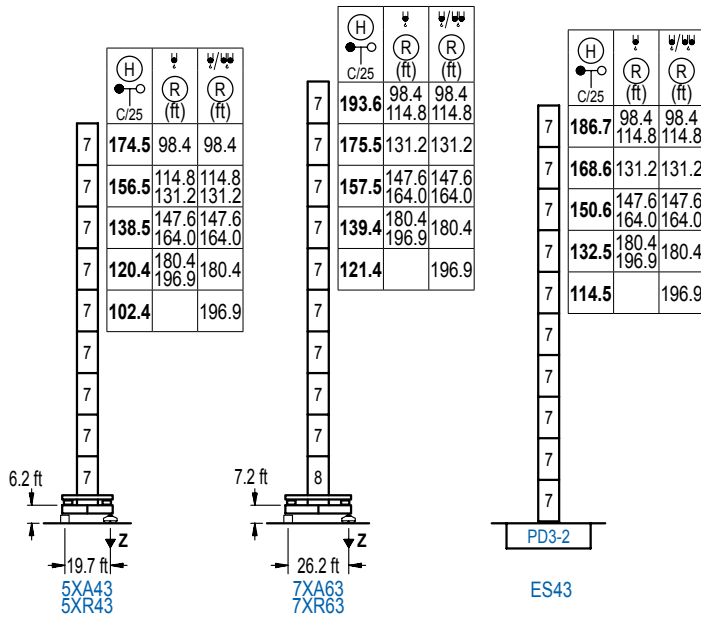
Opcional / Optional / En option / Kaufoption / Opzionale / Опционально

\*

## ALTURAS DE TORRE

Tower height / Hauteurs de tour / Turmhöhen / Altezza della torre / Высота башни

∅ 8.2 ft



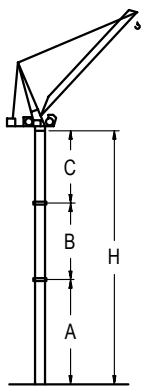
n°	Ref.	∅	h
7	D33	8.2	18.0
8	TD34	8.2	18.0
1x D33 = 1x D33M			

Z máx.	En servicio / In operation / En service / In Betrieb / In servizio / При работе	5XR43.. 300 kip 7XR63.. 262 kip
	Fuera de servicio / Out of service / Hors service / Ausser Betrieb / Fuori servizio / В стационарном состоянии	5XR43.. 370 kip 7XR63.. 337 kip

## GRÚA ARRIOSTRADA

Braced crane / Grue à entretoisement / Abgespannter Kran / Gru ancorata / Нарастиваемый кран

∅ 8.2 ft



5XA43						
R (ft)	W/W (ft)	-	196.9 / 180.4	164.0 / 147.6	131.2 / 114.8	98.4
A max	A min	-	78.4	96.5	114.5	132.5
B max	B min	-	54.1	72.2	90.2	108.3
C max	C min	-	96.1	114.2	132.2	150.3
H max	H min	-	174.5	228.7	210.6	282.8

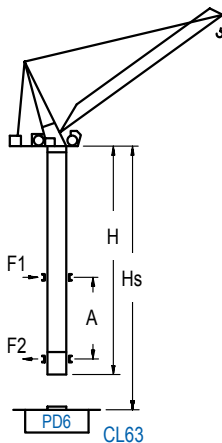
7XA63						
R (ft)	W/W (ft)	-	196.9 / 180.4	164.0 / 147.6	131.2	114.8 / 98.4
A max	A min	79.4	97.4	115.5	133.5	151.6
B max	B min	54.1	54.1	72.2	90.2	108.3
C max	C min	96.1	96.1	114.2	132.2	150.3
H max	H min	175.5	229.7	193.6	247.7	301.8

ES43						
R (ft)	W/W (ft)	-	196.9 / 180.4	164.0 / 147.6	131.2	114.8 / 98.4
A max	A min	72.5	90.6	108.6	126.6	144.7
B max	B min	54.1	54.1	72.2	90.2	108.3
C max	C min	96.1	96.1	114.2	132.2	150.3
H max	H min	168.6	222.8	186.7	240.8	282.8

## GRÚA TREPADORA

Internal climbing crane / Grue avec cage de télescopage intérieure / Kran mit klettern im Gebäude / Gru in rampante in cavedio / Кран с самоподъемом

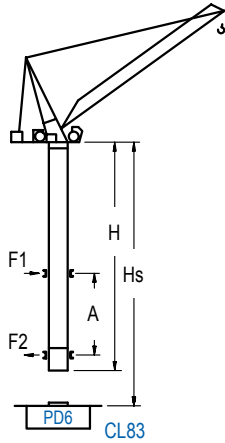
∅ 8.2 ft

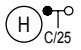


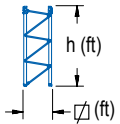
H (ft)	W/W (ft)		Hs < 1,310 ft	
	(R)	(R)	A max (ft)	A min (ft)
216.9 ft (6x D33 + TD34 + 4x D34A + CLD34A-24)	98.4	98.4	80.7	49.2
198.8 ft (5x D33 + TD34 + 4x D34A + CLD34A-24)	131.2	131.2	80.7	45.9
180.8 ft (4x D33 + TD34 + 4x D34A + CLD34A-24)	147.6	147.6	71.9	45.9
162.7 ft (3x D33 + TD34 + 4x D34A + CLD34A-24)	180.4	196.9	62.7	49.2
144.7 ft (2x D33 + TD34 + 4x D34A + CLD34A-24)	180.4	180.4	53.8	39.4
126.6 ft (D33 + TD34 + 4x D34A + CLD34A-24)	196.9	196.9	44.6	39.4

n°	Ref.	∅	h
7	D33	8.2	18.0
8	TD34	8.2	18.0
20	D34A	8.2	18.0
21	CLD34A-24	8.2	12.5
1x D33 = 1x D33M			

Otras zonas de viento, alturas superiores, arriostramientos o trepado interno consultar / Other wind zones, additional hook heights, tie frames or internal climbing on request / Autres zones de vent, des hauteurs supplémentaires, entretoisements ou grues avec cage de télescopage intérieure, sur demande / Andere Windzonen, weitere Hakenhöhen, Abspannungen zum Gebäude oder Klettern im Gebäude auf Anfrage / Per zone con velocità del vento particolari, altezze superiori, ancoraggi o rampante in cavedio, consultare il fabbricante / При других ветренных зонах, при большой высоте, привязках к зданию или наращивании крана внутри здания проконсультируйтесь с нами



 C/25	Hs < 1,310 ft			
	Ⓜ (ft)	Ⓜ (ft)	A max (ft)	A min (ft)
<b>216.9 ft</b> (5x D33 + TD34 + TD36B + 4x D36A + CLD36A-28)	98.4 114.8	98.4 114.8	80.7	32.8
<b>198.8 ft</b> (4x D33 + TD34 + TD36B + 4x D36A + CLD36A-28)	131.2	131.2	71.9	32.8
<b>180.8 ft</b> (3x D33 + TD34 + TD36B + 4x D36A + CLD36A-28)	147.6 164.0	147.6 164.0	62.7	32.8
<b>162.7 ft</b> (2x D33 + TD34 + TD36B + 4x D36A + CLD36A-28)	180.4 196.9	180.4	53.8	32.8
<b>144.7 ft</b> (D33 + TD34 + TD36B + 4x D36A + CLD36A-28)		196.9	44.6	32.8



n°	Ref.	Ø	h
7	D33	8.2	18.0
8	TD34	8.2	18.0
10	TD36B	8.2	18.0
12	D36A	8.2	18.0
13	CLD36A-28	8.2	12.5
1x D33 = 1x D33M			

Otras zonas de viento, alturas superiores, arriostramientos o trepado interno consultar / Other wind zones, additional hook heights, tie frames or internal climbing on request / Autres zones de vent, des hauteurs supplémentaires, entretoisements ou grues avec cage de télescopage intérieure, sur demande / Andere Windzonen, weitere Hakenhöhen, Abspannungen zum Gebäude oder Klettern im Gebäude auf Anfrage / Per zone con velocità del vento particolari, altezze superiori, ancoraggi o rampante in cavedio, consultare il fabbricante / При других ветренных зонах, при большой высоте, привязках к зданию или наращивании крана внутри здания проконсультируйтесь с нами