



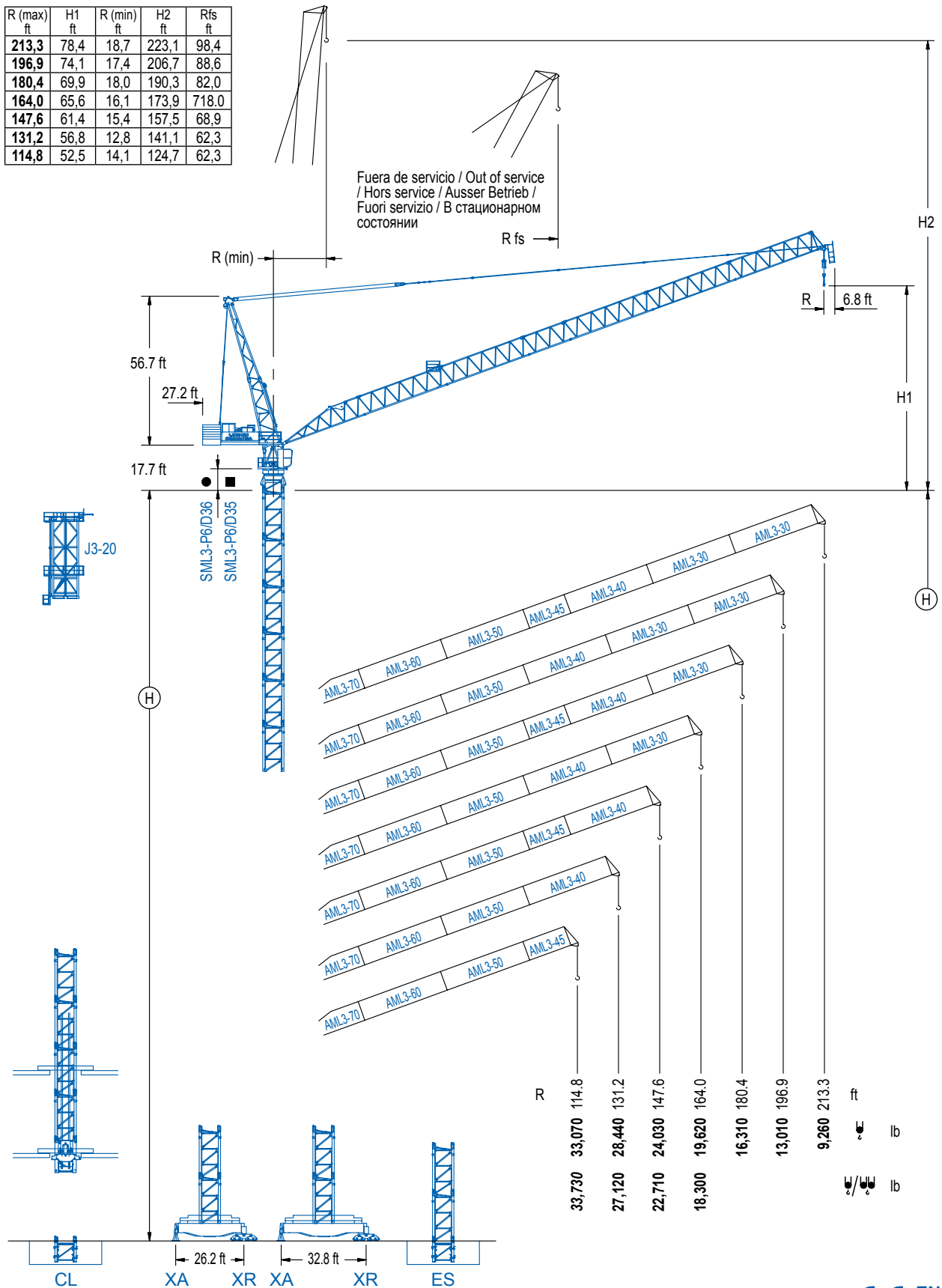
**COMANSA**

**LCL Series**

**LCL 500**

**66,140 lb**

R (max) ft	H1 ft	R (min) ft	H2 ft	Rfs ft
213,3	78,4	18,7	223,1	98,4
196,9	74,1	17,4	206,7	88,6
180,4	69,9	18,0	190,3	82,0
164,0	65,6	16,1	173,9	718,0
147,6	61,4	15,4	157,5	68,9
131,2	56,8	12,8	141,1	62,3
114,8	52,5	14,1	124,7	62,3



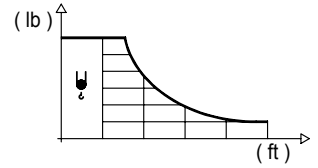
**LCL Series**

**CE** EN 14439  
(C/25)

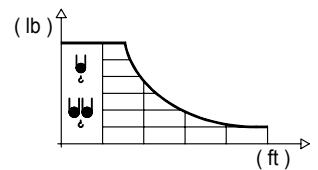
## DIAGRAMA DE CARGAS

Load chart / Diagramme de charges / Lastdiagramm / Diagramma di carico / Диаграмма распределения нагрузки

R (ft)	ψ	RCmax (ft)	49.2	65.6	82.0	98.4	114.8	131.2	147.6	164.0	180.4	196.9	213.3	↔ (ft) ↓ (lb)
213.3		72.2		33,070	28,620	23,260	19,470	16,670	14,530	12,810	11,400	10,250	9,260	
196.9		83.7		33,070	27,840	23,590	20,410	17,950	15,960	14,350	13,010			
180.4		96.8		33,070	32,450	27,310	23,500	20,570	18,230	16,310				
164.0		106.6			33,070	30,270	25,790	22,350	19,620					
147.6		111.5			33,070	31,920	27,470	24,030						
131.2		114.8				33,070	28,440							
114.8		114.8					33,070							

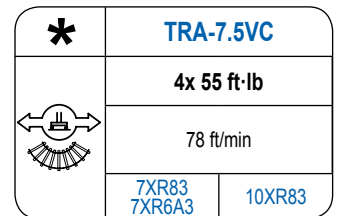
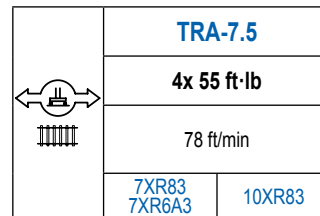
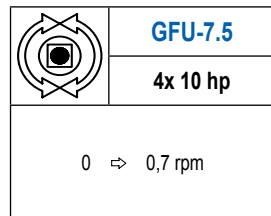
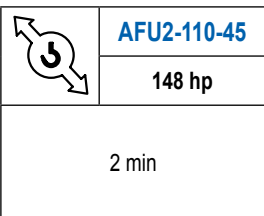
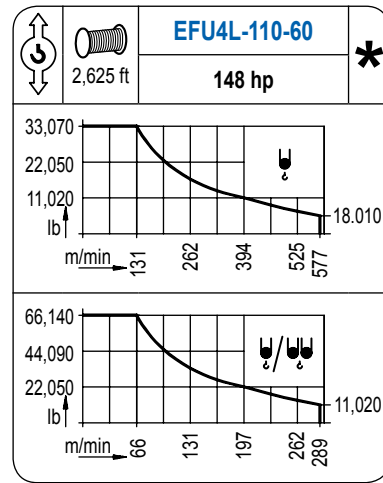
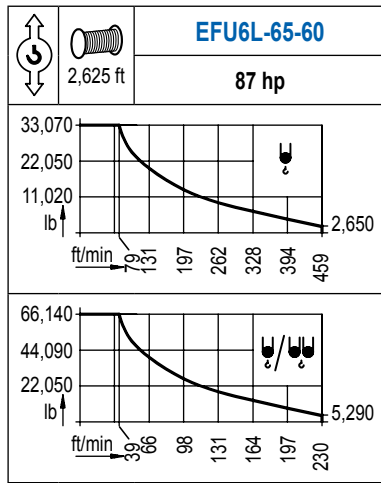


R (ft)	ψ/ψψ	RCmax (ft)	49.2	65.6	82.0	98.4	114.8	131.2	147.6	164.0	180.4	196.9	213.3	↔ (ft) ↓ (lb)
164.0		59.1	66,140	57,760	43,610	34,770	28,750	24,340	20,990	18,300				
147.6		55.8	66,140	55,450	43,470	35,630	30,050	25,900	22,710					
131.2		59.1	66,140	58,820	45,920	37,480	31,530	27,120						
114.8		62.3	66,140	62,500	48,920	40,010	33,730							



## MECANISMOS

Mechanisms / Mécanismes / Antriebe / Meccanismi / Механизмы



POTENCIA / POWER / PUISSANCE / LEISTUNG / POTENZA / МОЩНОСТЬ				Tensión de alimentación / Operating voltage / Tension de service / Betriebsspannung / Tensione di alimentazione / Напряжение источника питания	Generador / Generator / Générateur / Generator / Generatore / Генератор
Elevación / Hoist / Levage / Hub / Sollevamento / Тип механизма (подъем)	Abatimiento / Luffing / Releage / Einziehen / Brandeggio / Складывание	Giro / Slewing / Rotation / Drehbewegung / Rotazione / Поворот	Traslación / Travel / Translation / Verfahrbewegung / Traslazione / Ход	480 V 3ph 60 Hz	365 kVA 430 kVA
EFU6L-65-75	AFU2-110-45	(4x) GFU-7.5	(4x) TRA-7.5		
EFU4L-110-75					

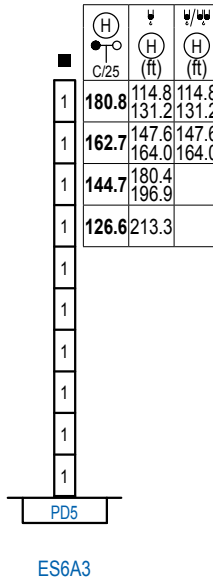
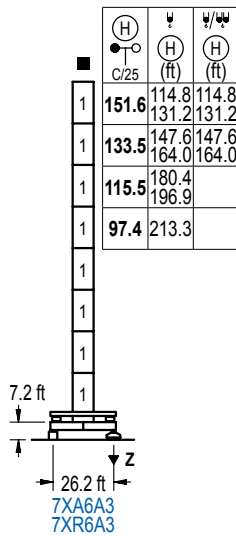
Opcional / Optional / En option / Kaufoption / Opzionale / Опционально

\*

## ALTURAS DE TORRE

Tower height / Hauteurs de tour / Turmhöhen / Altezza della torre / Высота башни

∅ 8.2 ft



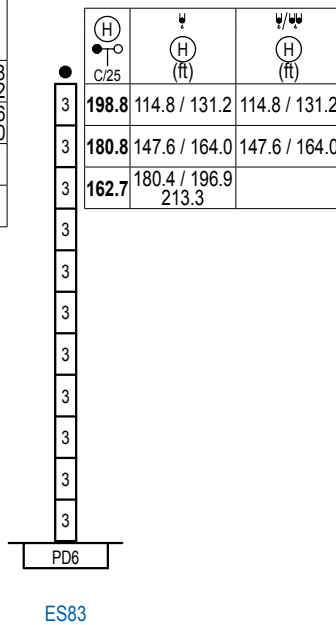
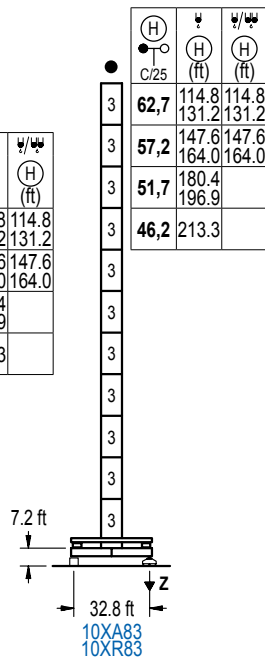
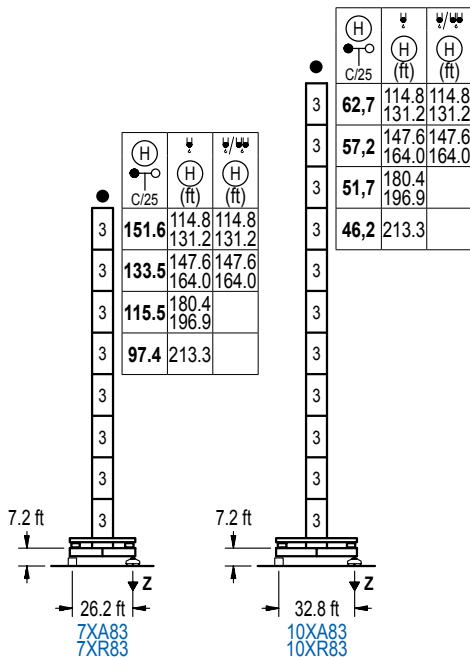
	n°	Ref.	∅	h
	1	D35	8.2	18.0

Z máx.	En servicio / In operation / En service / In Betrieb / In servizio / При работе	7XR6A3 ...351 kip
	Fuera de servicio / Out of service / Hors service / Ausser Betrieb / Fuori servizio / В стационарном состоянии	7XR6A3 ...410 kip

## ALTURAS DE TORRE

Tower height / Hauteurs de tour / Turmhöhen / Altezza della torre / Высота башни

∅ 8.2 ft



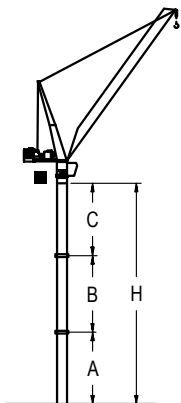
	n°	Ref.	∅	h
	3	D36B	8.2	18.0

Z máx.	En servicio / In operation / En service / In Betrieb / In servizio / При работе	7XR83.... 340 kip 10XR83... 377 kip
	Fuera de servicio / Out of service / Hors service / Ausser Betrieb / Fuori servizio / В стационарном состоянии	7XR83.....414 kip 10XR83.....549 kip

## GRÚA ARRIOSTRADA

Braced crane / Grue à entretoisement / Abgespannter Kran / Gru ancorata / Нарастиваемый кран

∅ 8.2 ft



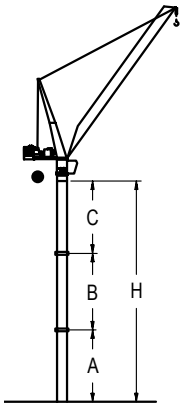
		7XA6A3					
R (ft)	(ft) W/W	213.3	196.9 / 180.4	164.0 / 147.6	131.2 / 114.8	131.2 / 114.8	
A max		-	49.4	97.4	115.5		
A min		-	49.4	49.4	97.4		
B max		-	-	72.2	72.2	90.2	
B min		-	-	54.1	54.1	72.2	
C max		-	-	108.3	90.2	108.3	
H max		-	-	187.7	241.8	205.7	

		ES6A3					
R (ft)	(ft) W/W	213.3	196.9 / 180.4	164.0 / 147.6	131.2 / 114.8	131.2 / 114.8	
A max		90.6	108.6	126.6	144.7		
A min		72.5	72.5	72.5	90.6		
B max		-	54.1	72.2	72.2	90.2	
B min		-	54.1	54.1	54.1	72.2	
C max		90.2	90.2	108.3	90.2	108.3	
H max		180.8	234.9	216.9	271.0	234.9	

## GRÚA ARRIOSTRADA

Braced crane / Grue à entretoisement / Abgespannter Kran / Gru ancorata / Нарациваемый кран

∅ 8.2 ft



		7XA83							
R	ψ	213.3	196.9 / 180.4	164.0 / 147.6	131.2 / 114.8				
(ft)	ψ/ψ	-	-	164.0 / 147.6	131.2 / 114.8				
A max		61.4	49.4	97.4	115.5				
A min		61.4	61.4	49.4	97.4				
B max		54.1	72.2	90.2	108.3				
B min		54.1	54.1	72.2	72.2				
C max		90.2	108.3	126.3	144.4				
H max		151.6	205.7	259.8	314.0	259.8	368.1		

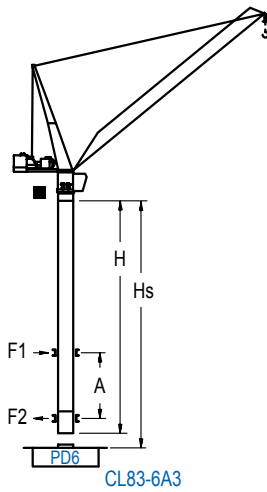
		10XA83							
R	ψ	213.3	196.9 / 180.4	164.0 / 147.6	131.2 / 114.8				
(ft)	ψ/ψ	-	-	164.0 / 147.6	131.2 / 114.8				
A max		115.5	133.5	151.6	169.6				
A min		97.4	97.4	49.4	97.4				
B max		72.2	72.2	90.2	108.3				
B min		72.2	72.2	72.2	72.2				
C max		108.3	108.3	126.3	144.4				
H max		223.8	296.0	368.1	422.2	277.9	368.1	314.0	422.2

		ES83							
R	ψ	213.3 / 196.9 / 180.4	164.0 / 147.6	131.2 / 114.8					
(ft)	ψ/ψ	-	164.0 / 147.6	131.2 / 114.8					
A max		126.6	144.7	162.7					
A min		90.6	72.5	90.6					
B max		72.2	90.2	108.3					
B min		72.2	72.2	72.2					
C max		108.3	126.3	144.4					
H max		234.9	307.1	361.2	307.1	415.4			

## GRÚA TREPADORA

Internal climbing crane / Grue avec cage de télescopage intérieure / Kran mit klettern im Gebäude / Gru in rampante in cavedio / Кран с самоподъемом

∅ 8.2 ft



CL83-6A3

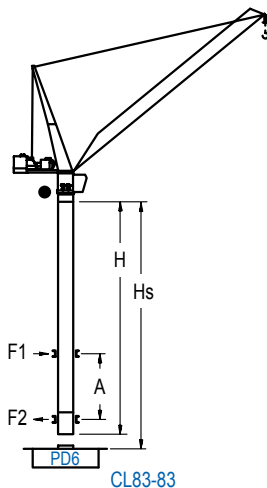
H C/25	ψ (ft)	ψ/ψ (ft)	Hs < 985 ft	
			A max (ft)	A min (ft)
<b>211.0 ft</b> (6x D35 + TD36B + 4x D36A + CLD36A-28)	114.8 131.2	114.8 131.2	80.7	45.9
<b>192.9 ft</b> (5x D35 + TD36B + 4x D36A + CLD36A-28)	147.6 164.0	147.6 164.0	71.9	45.9
<b>174.9 ft</b> (4x D35 + TD36B + 4x D36A + CLD36A-28)	180.4 196.9		62.7	45.9
<b>156.8 ft</b> (3x D35 + TD36B + 4x D36A + CLD36A-28)	213.3		53.8	49.2

n°	Ref.	∅	h
1	D35	8.2	18.0
2	TD36B	8.2	18.0
4	D36A	8.2	18.0
5	CLD36A-28	8.2	12.5

## GRÚA TREPADORA

Internal climbing crane / Grue avec cage de télescopage intérieure / Kran mit klettern im Gebäude / Gru in rampante in cavedio / Кран с самоподъемом

∅ 8.2 ft



CL83-83

H C/25	ψ (ft)	ψ/ψ (ft)	Hs < 985 ft	
			A max (ft)	A min (ft)
<b>211.0 ft</b> (7x D36 + 4x D36A + CLD36A-28)	114.8 131.2	114.8 131.2	80.7	45.9
<b>192.9 ft</b> (6x D36 + 4x D36A + CLD36A-28)	147.6 164.0	147.6 164.0	71.9	45.9
<b>174.9 ft</b> (5x D36 + 4x D36A + CLD36A-28)	180.4 196.9 213.3		62.7	49.2

n°	Ref.	∅	h
3	D36	8.2	18.0
4	D36A	8.2	18.0
5	CLD36A-28	8.2	12.5

Otras zonas de viento, alturas superiores, arriostamientos o trepado interno consultar / Other wind zones, additional hook heights, tie frames or internal climbing on request / Autres zones de vent, des hauteurs supplémentaires, entretoisements ou grues avec cage de télescopage intérieure, sur demande / Andere Windzonen, weitere Hakenhöhen, Abspannungen zum Gebäude oder Klettern im Gebäude auf Anfrage / Per zone con velocità del vento particolari, altezze superiori, ancoraggi o rampante in cavedio, consultare il fabbricante / При других ветренных зонах, при большой высоте, привязках к зданию или наращивании крана внутри здания проконсультируйтесь с нами